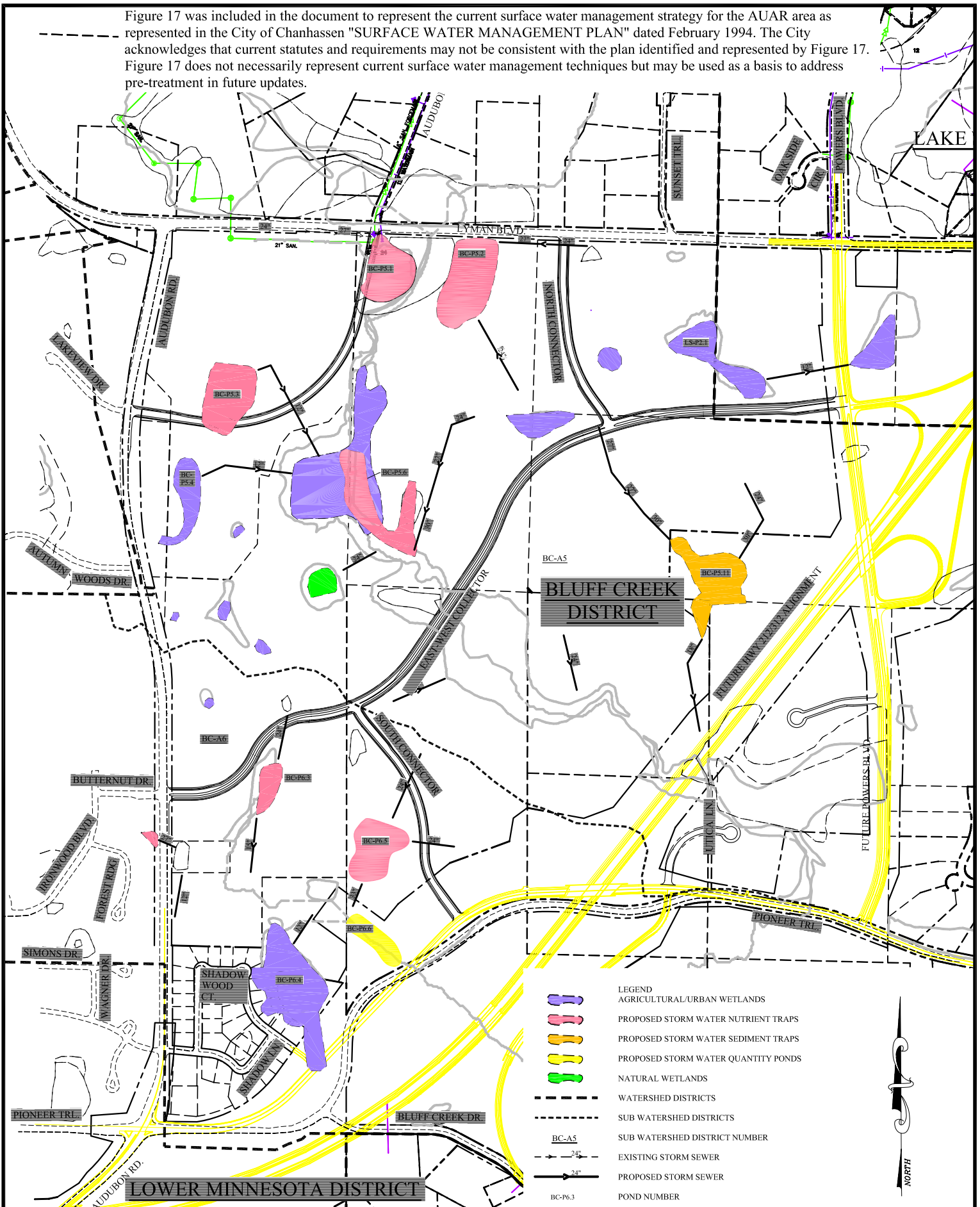


Figure 17 was included in the document to represent the current surface water management strategy for the AUAR area as represented in the City of Chanhassen "SURFACE WATER MANAGEMENT PLAN" dated February 1994. The City acknowledges that current statutes and requirements may not be consistent with the plan identified and represented by Figure 17. Figure 17 does not necessarily represent current surface water management techniques but may be used as a basis to address pre-treatment in future updates.



- LEGEND**
- AGRICULTURAL/URBAN WETLANDS
  - PROPOSED STORM WATER NUTRIENT TRAPS
  - PROPOSED STORM WATER SEDIMENT TRAPS
  - PROPOSED STORM WATER QUANTITY PONDS
  - NATURAL WETLANDS
  - WATERSHED DISTRICTS
  - SUB WATERSHED DISTRICTS
  - SUB WATERSHED DISTRICT NUMBER
  - EXISTING STORM SEWER
  - PROPOSED STORM SEWER
  - POND NUMBER

**CHANHASSEN AUAR  
2010 - BUILD HWY 212/312  
FIGURE 17 - CONCEPTUAL SURFACE WATER MANAGEMENT PLAN**