

OVERVIEW

PROJECT INTENT

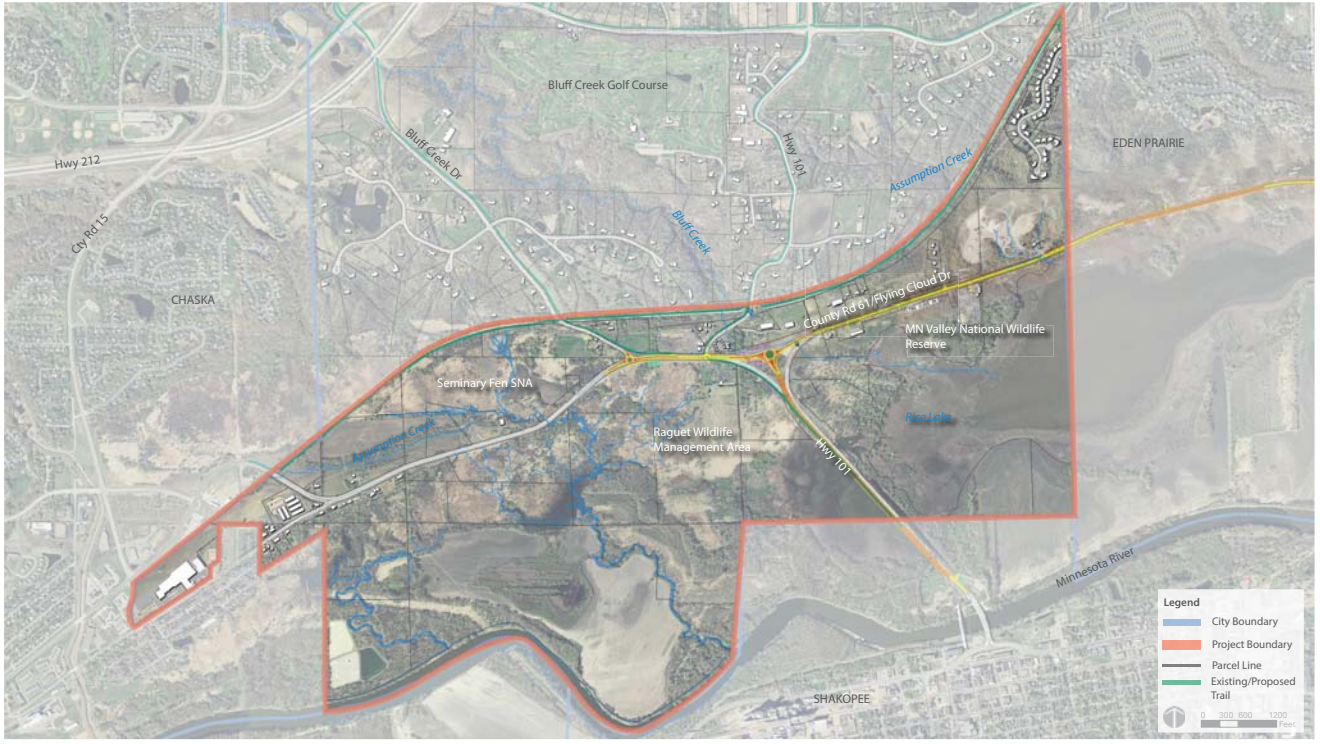
The County Road (CR) 61 corridor is a key future gateway to the City of Chanhassen. Impending transportation and infrastructure changes may increase the development potential of parcels within the study area. The City desires to complete a framework plan that will guide future public and private sector decision-making, shaping this important gateway to the city.

PROJECT SCHEDULE

	Feb	Mar	Apr	May	Jun	Jul	Aug	Sep
1 Kickoff/Data Gathering	■							
2 Field Trip		●						
3 Corridor Analysis		■	■	■				
4 Open House I				✳				
5 Development Options					■			
6 Open House II						✳		
7 Joint Council/Planning Commission Work Session							●	
8 Summary Document							DRAFT	FINAL
9 City Council and/or Planning Commission Action								●



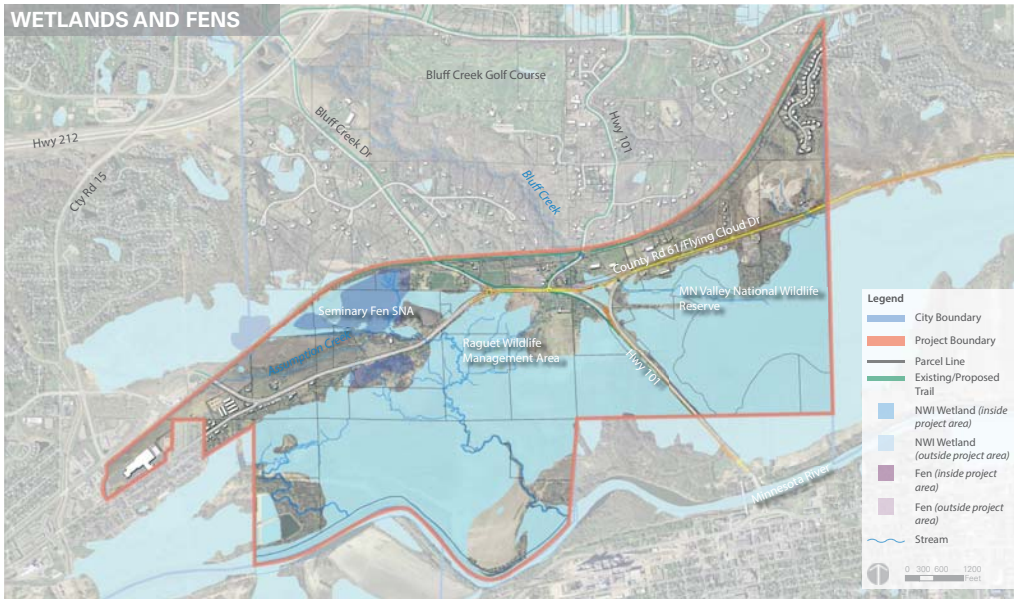
STUDY AREA



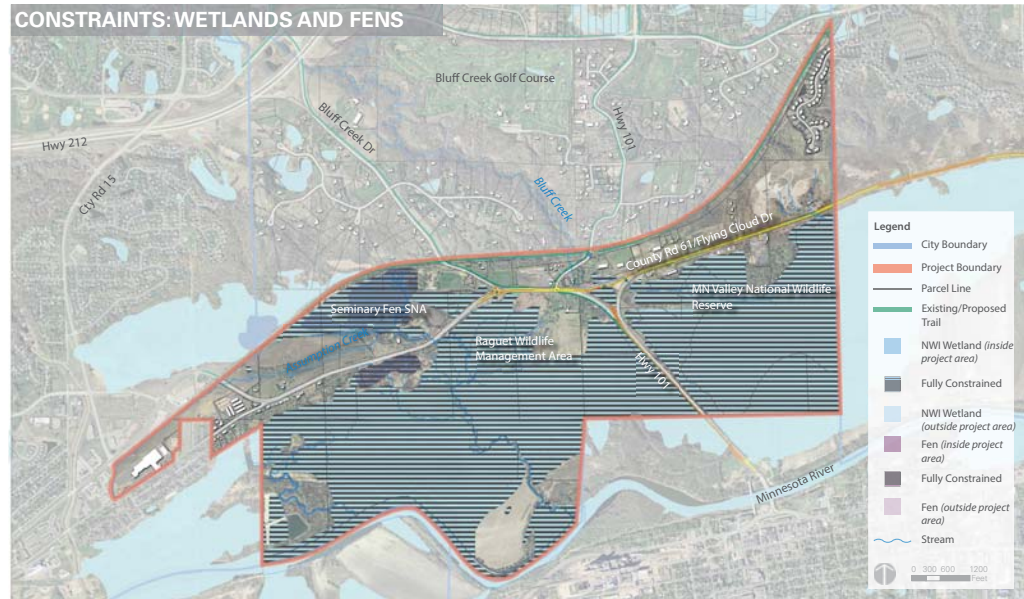
CONTEXT

NATURAL RESOURCES + CONSTRAINTS

WETLANDS AND FENS



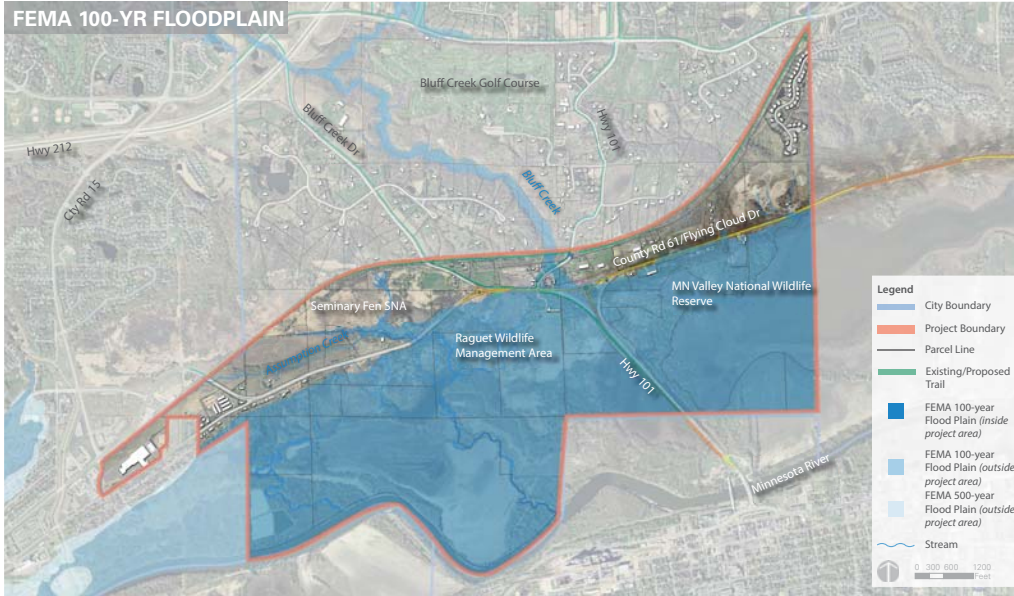
CONSTRAINTS: WETLANDS AND FENS



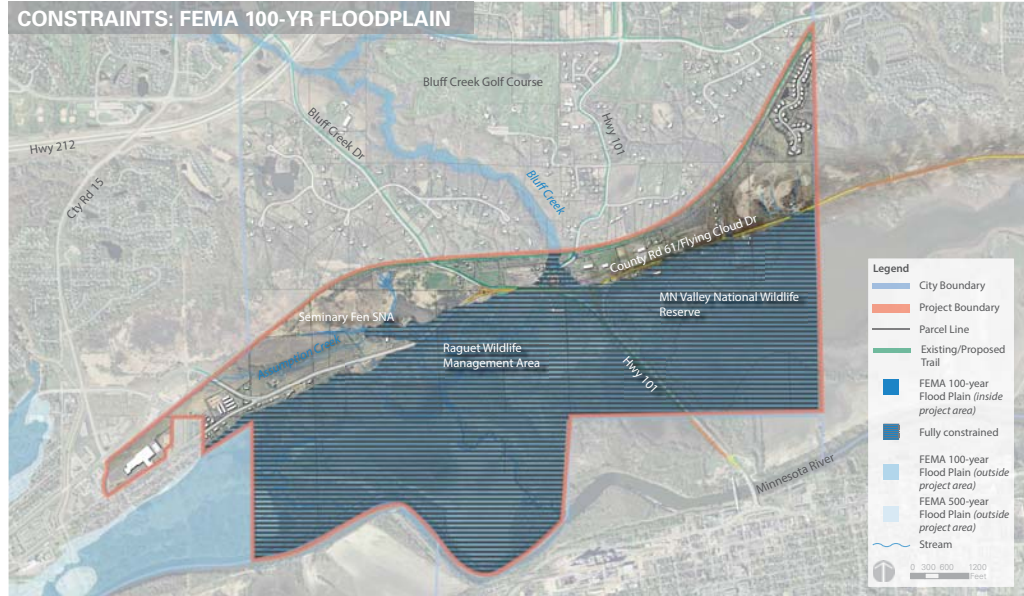
RESOURCES

HOW RESOURCES CONSTRAIN PARCEL DEVELOPMENT

FEMA 100-YR FLOODPLAIN



CONSTRAINTS: FEMA 100-YR FLOODPLAIN



RESOURCES

HOW RESOURCES CONSTRAIN PARCEL DEVELOPMENT

CONTEXT

NATURAL RESOURCES + CONSTRAINTS

TREE COVER, OPEN SPACE AND SURFACE WATER



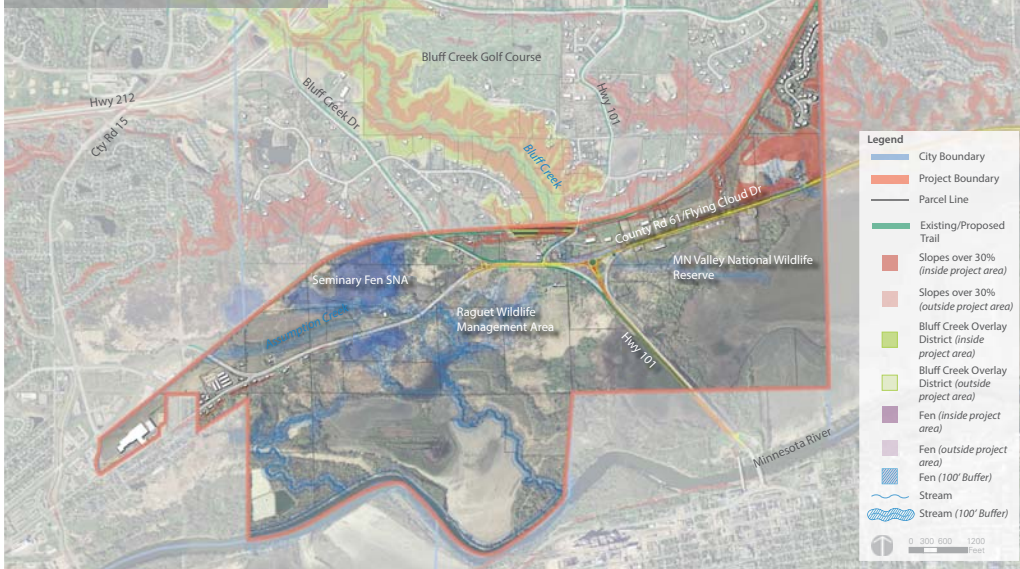
CONSTRAINTS: TREE COVER, OPEN SPACE AND SURFACE WATER



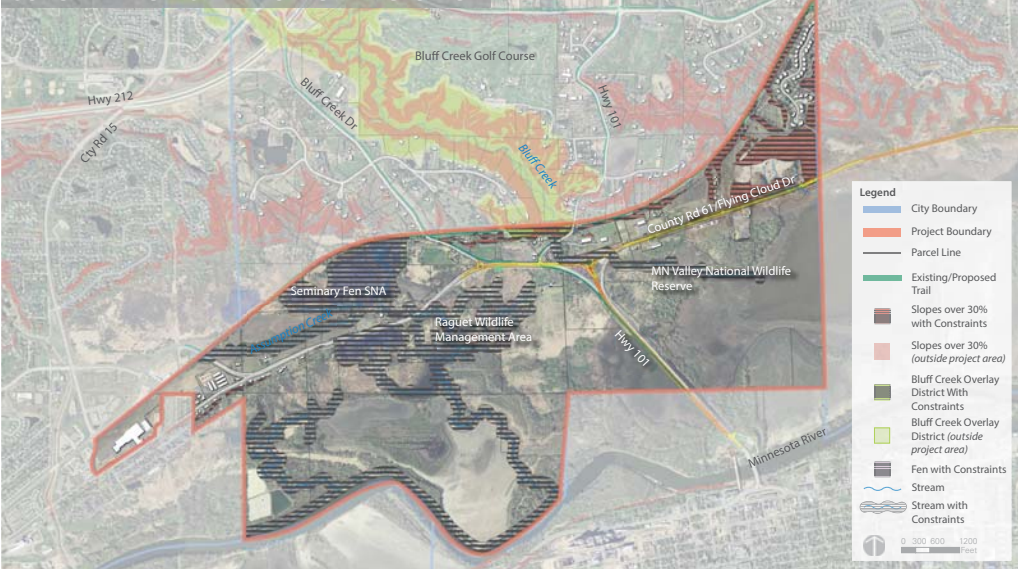
RESOURCES

HOW RESOURCES CONSTRAIN PARCEL DEVELOPMENT

BUFFER ZONES AND SLOPES



CONSTRAINTS: BUFFER ZONES AND SLOPES

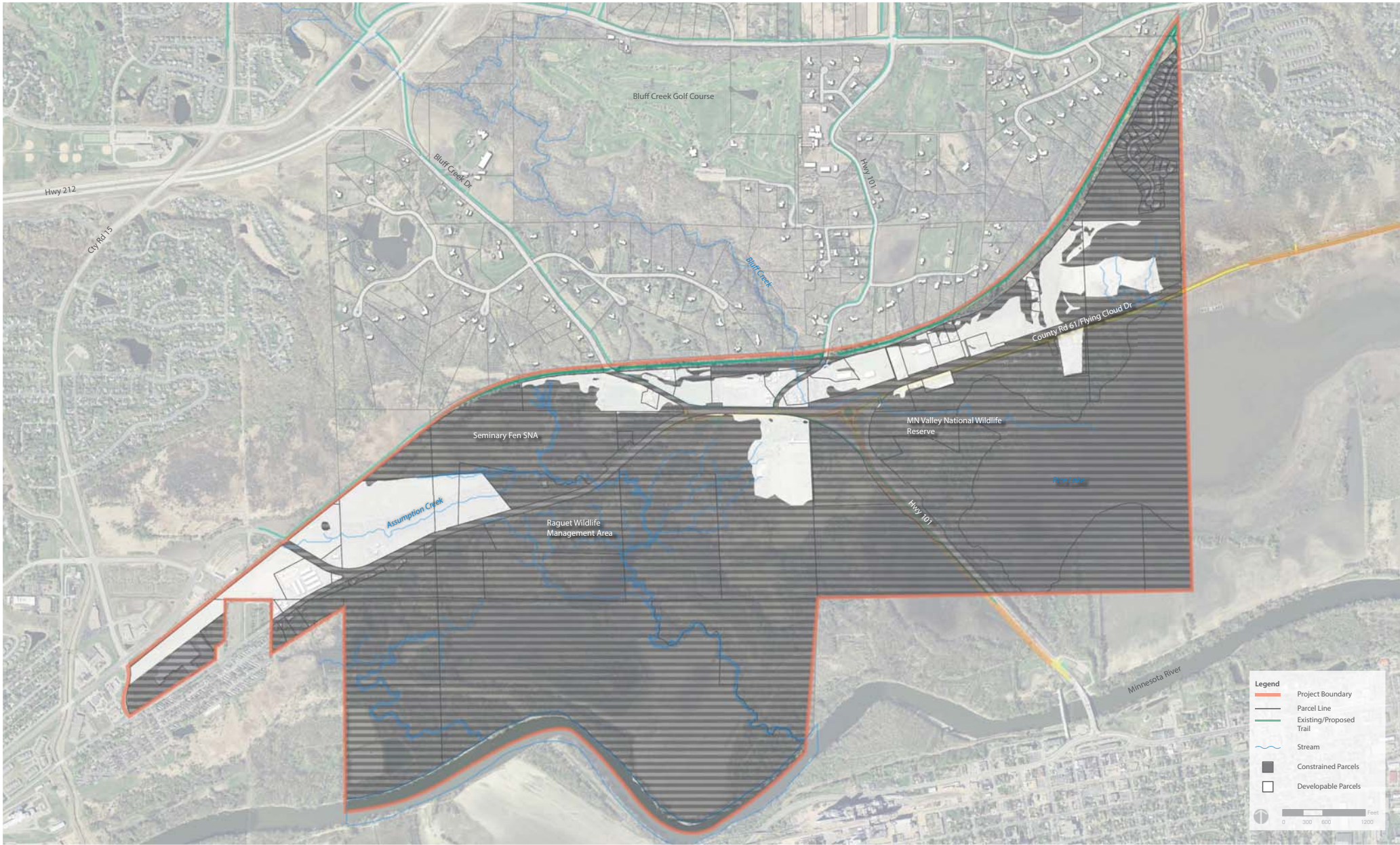


RESOURCES

HOW RESOURCES CONSTRAIN PARCEL DEVELOPMENT

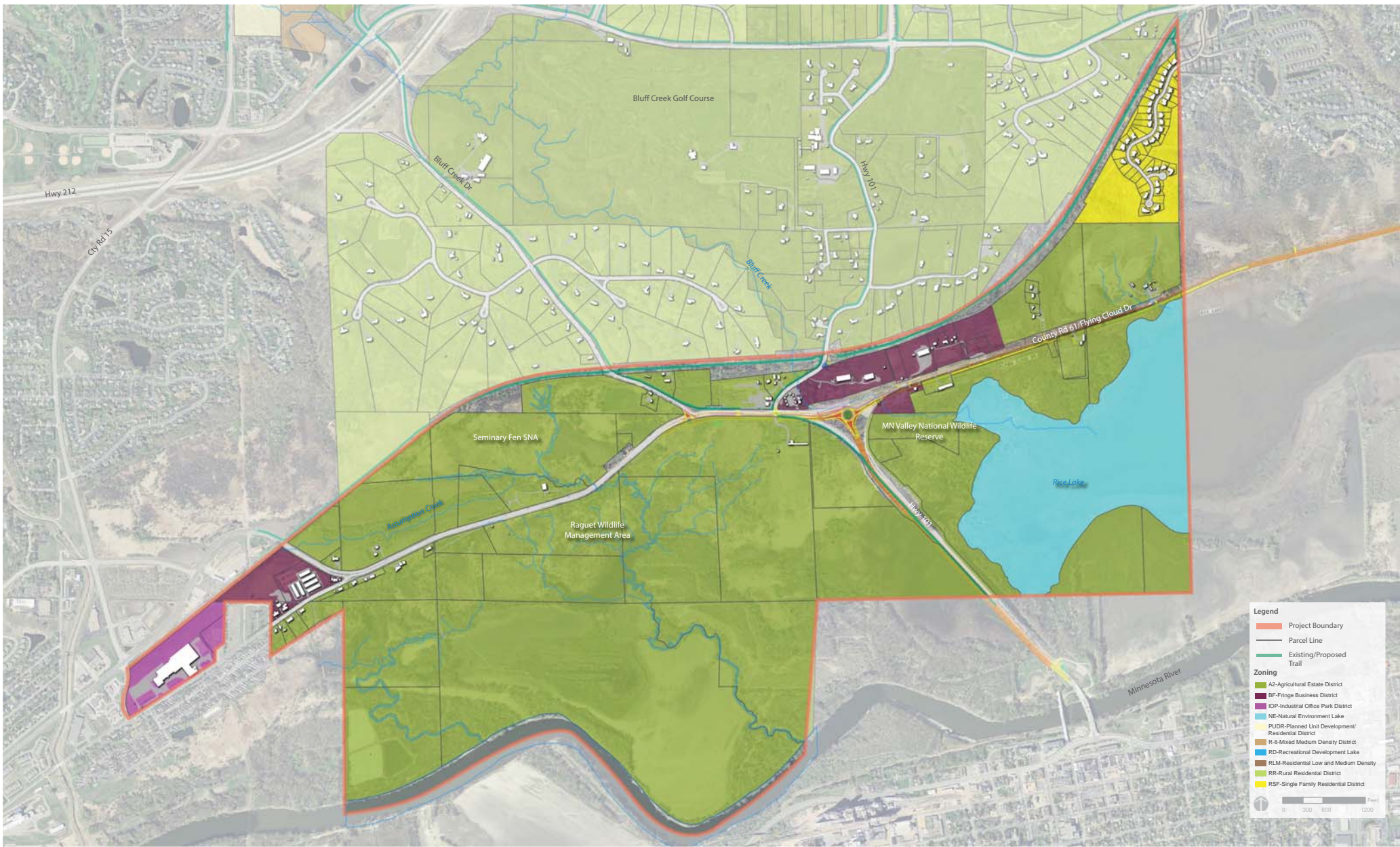
OPPORTUNITIES AND CONSTRAINTS

DEVELOPABLE PARCELS



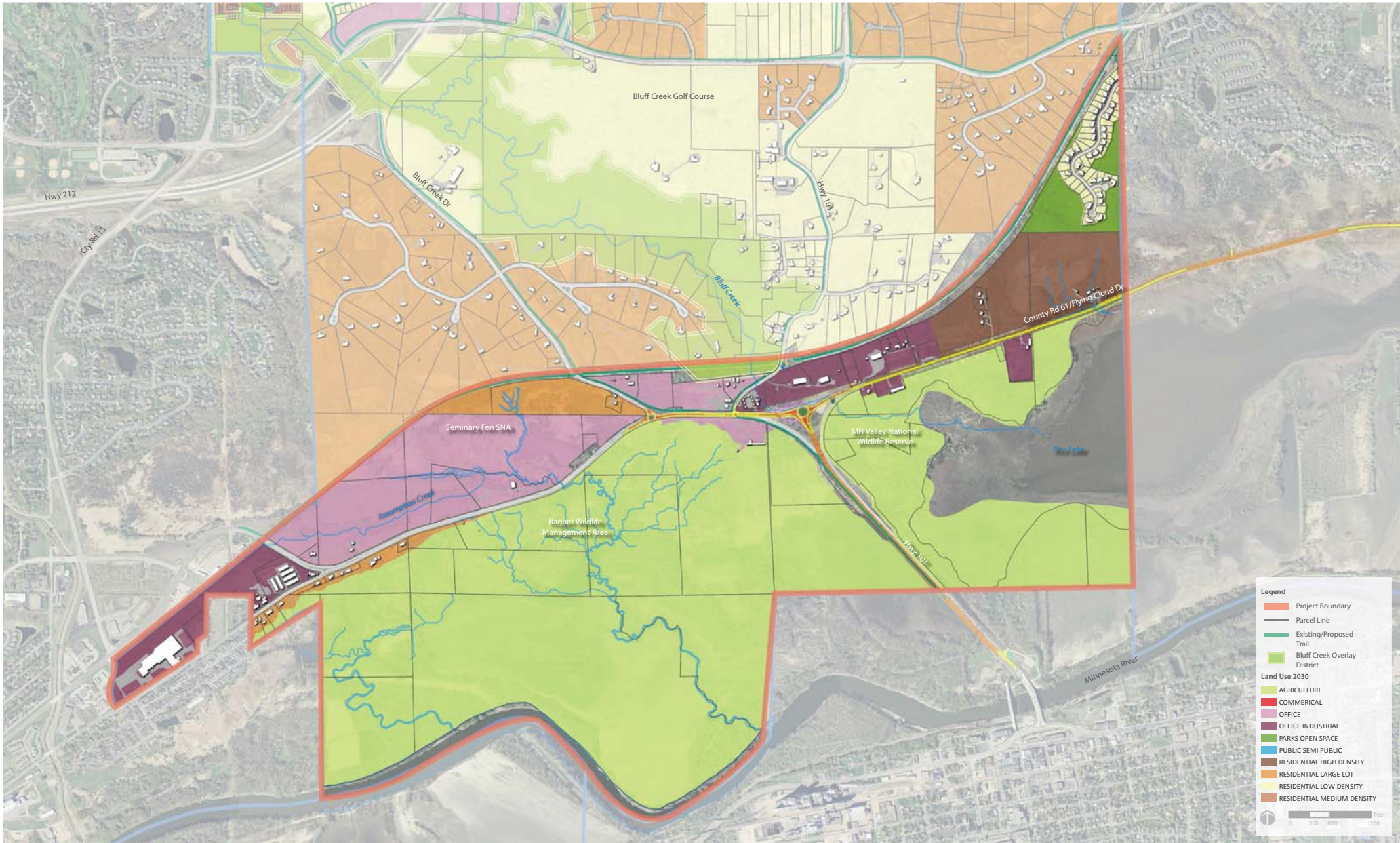
PROJECT CONTEXT

ZONING



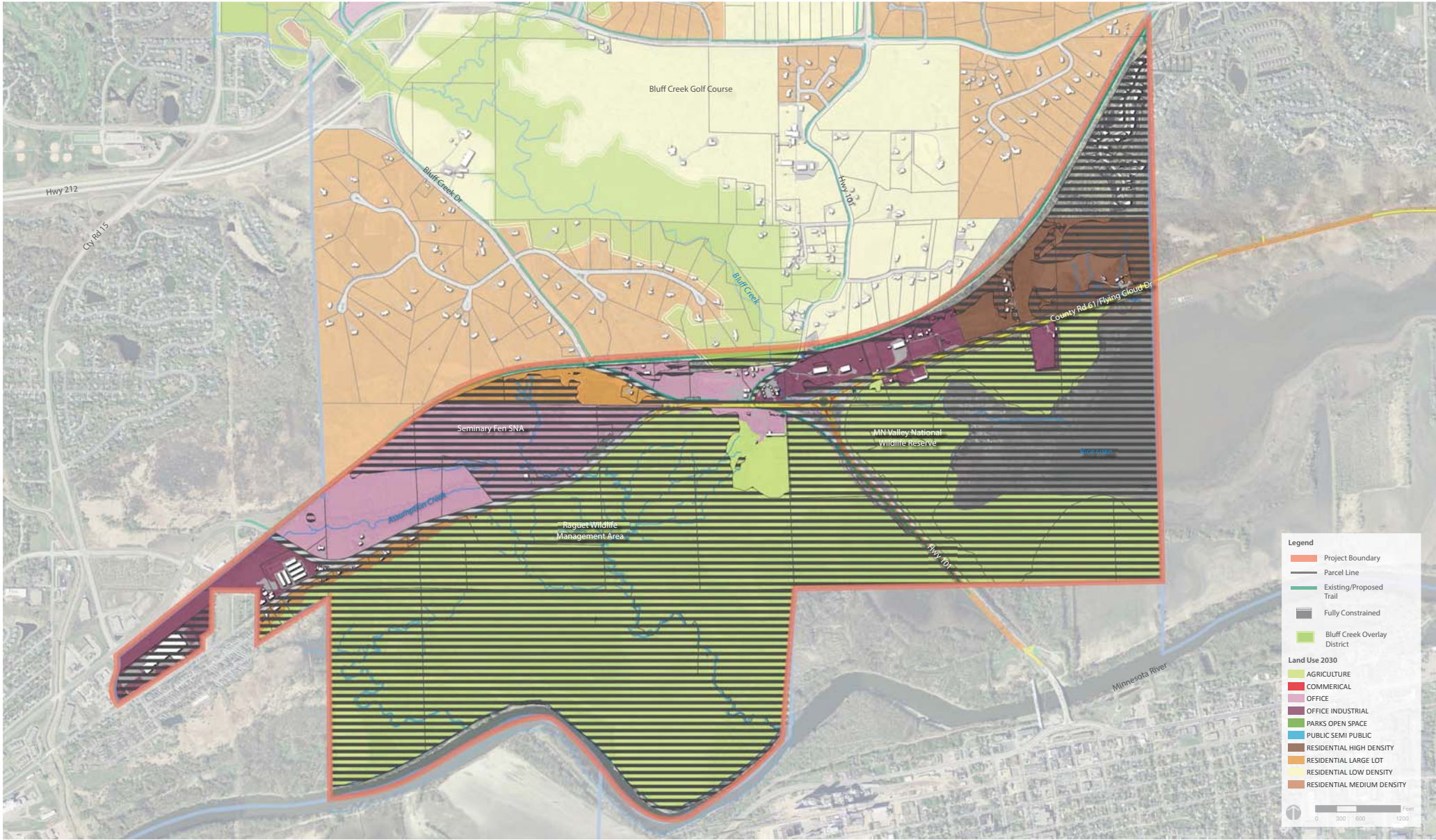
PROJECT CONTEXT

LAND USE 2030



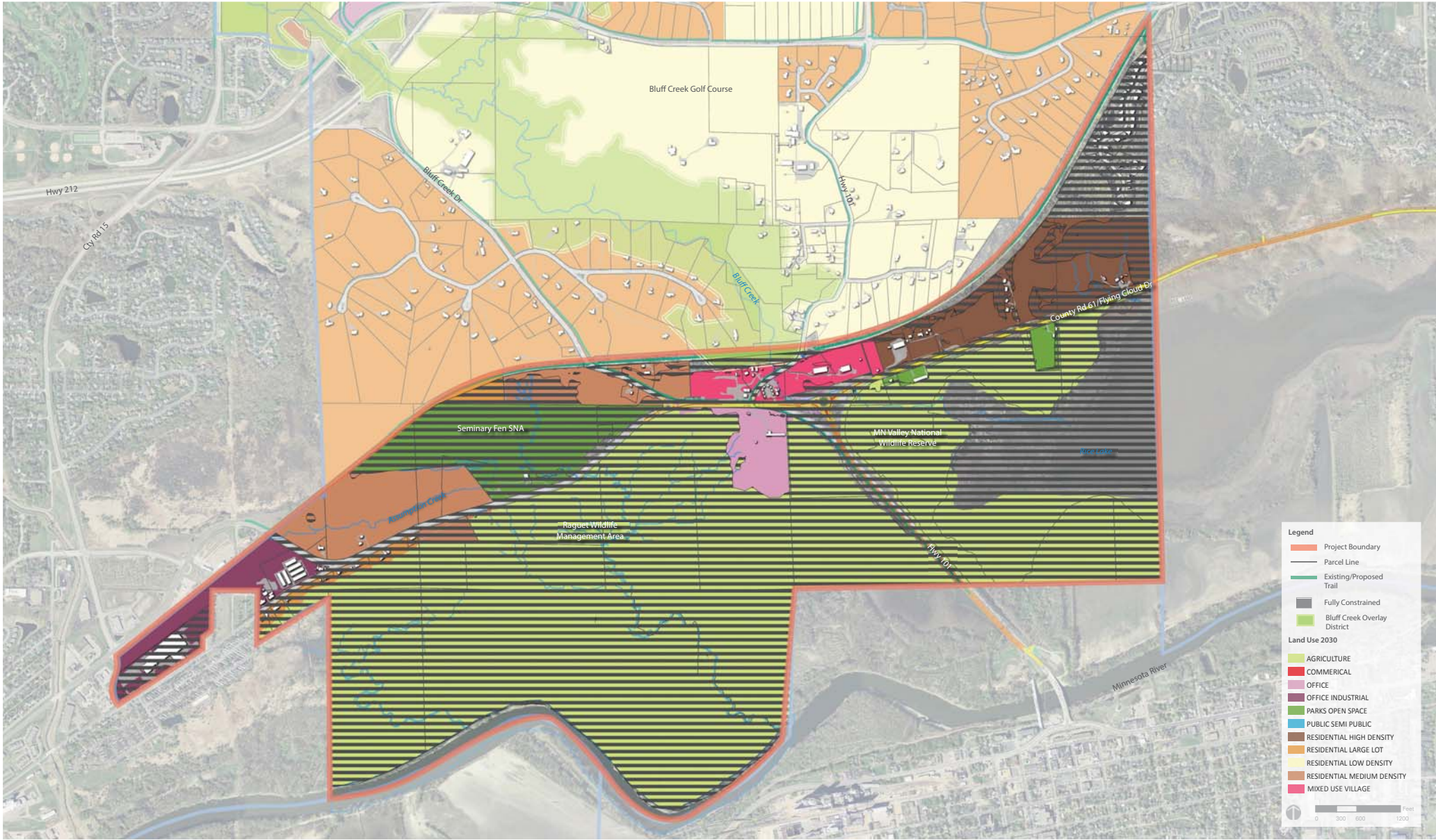
OPPORTUNITIES AND CONSTRAINTS

COMPREHENSIVE PLAN 2030



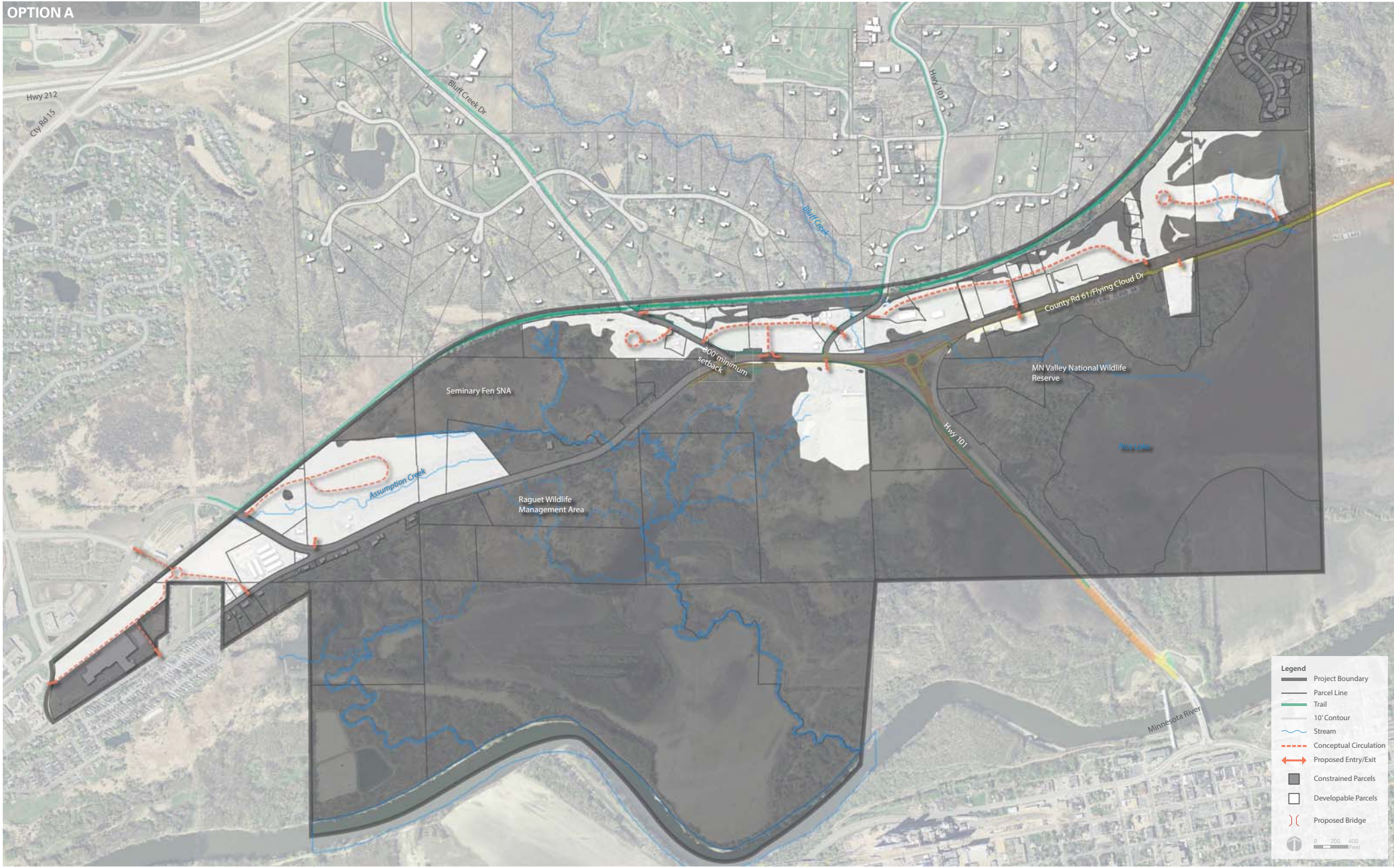
OPPORTUNITIES AND CONSTRAINTS

ALTERNATIVE SCENARIO



PARCEL DEVELOPMENT ACCESS

OPTION A



PARCEL DEVELOPMENT ACCESS

OPTION B

