



Park & Recreation Commission

CHANHASSEN

**Parks & Recreation
System Plan**

March 28, 2017

TOPICS

- 1. Recap of Guiding Principles**
- 2. System Plan Recommendations -
Goals, Policies, & Initiatives**
- 3. Community Engagement**

RECAP OF GUIDING PRINCIPLES



Connectivity

Connectedness will be at the heart of Chanhassen's Parks and Recreation System. The system itself will be connected; its parks, preserves, and trails knitted together to create a network of recreation and open spaces that reaches to every corner of the community. This network will connect residents, neighborhoods, and destinations to one another, strengthening the community and enabling all to enjoy safe, easy, and convenient travel throughout the community and to neighboring cities. Likewise, the system's facilities and programs will not only connect residents to one another, but they also will connect residents to the outdoors and to Chanhassen's wealth of natural resources.

RECAP OF GUIDING PRINCIPLES



Engagement

Chanhassen's Parks and Recreation system will welcome residents of all ages and all abilities, enabling them to lead active, healthy lives in which they explore the outdoors, experience art and culture, and engage with one another.

Partnerships with private entities, neighborhood and community organizations, athletic associations, user groups, businesses, and schools will create a sense of shared ownership and pride across all segments of the community, leading to active participation in system planning, operation, and maintenance. The system's high quality facilities and programs will be a source of community pride that inspires life-long discovery, learning, and socializing.

RECAP OF GUIDING PRINCIPLES



Adaptable

As Chanhassen evolves, becoming a larger, more economically and culturally diverse community, its Parks and Recreation System will remain adaptable in the way it responds to new needs and challenges, and dynamic in its ability to deliver high-quality programs, facilities, and services. Increased partnerships with groups, organizations, and businesses representing all segments of the community will result in new and diverse sources of funding and an infusion of new ideas, energy and enthusiasm. These partnerships will increase the system's versatility, enabling staff and volunteers to adjust to lifestyle changes, respond to new trends, and enhance the system's quality and efficiency.

RECAP OF GUIDING PRINCIPLES



Stewardship

Stewardship will continue to be one of the hallmarks of Chanhassen's Parks and Recreation System. An extensive network of preserves gives residents the opportunity to explore and learn about Chanhassen's rich web of natural resources. Greater awareness of Chanhassen's prairies, wetlands, lakes, rivers, forests, and wildlife will lead to a greater understanding of the role those resources play in making the community a great place. Chanhassen's citizens embrace their role as stewards of their city's natural resources. They understand the need to conserve Chanhassen's natural resources so they will continue to enrich future generations, and they advocate continuing to incorporate sustainability practices such as sustainable design, native plant diversity, and ecological maintenance into the system's planning and daily operations.

WHAT ARE THE RECOMMENDATIONS?

» **Drafted based on:**

- Needs assessment
- Peer community & national standards analysis
- Community input
- Review of previous comprehensive plan
- Advisory Committee discussions
- Meetings with City Staff

WHAT ARE THE RECOMMENDATIONS?

- » **Goals** are broad statements that describe desired long-term outcomes needed to achieve guiding principles
- » **Policies** are statements that will guide City decision-making to achieve the goals
- » **Initiatives** describe specific actions or steps

Input needed:

- » What is missing?
- » Where do you have concerns?
- » What additional information or images would be helpful to explain or illustrate recommendation?
- » What about measurability?

GOALS

1. Provide a comprehensive system of park, recreation, and open space facilities to serve active and passive needs.
2. Maintain a comprehensive and easily navigable trail and sidewalk system that connects neighborhoods to park and recreation facilities, schools, community destinations, and other communities.
3. Ensure all residents have the opportunity to participate in recreation, education, cultural, and arts activities.
4. Be a leader in environmental sustainability.
5. Proactively plan for a high quality, efficient parks and recreation system that meets community needs.
6. Implement strategies to supplement the City's capacity to maintain and expand the parks and recreation system.

INITIATIVES

1. Parks

1.1. Maintain Lake Ann as the premier community park.

1.1.1. Develop a master plan that defines the extent of park expansion to the west and north to preserve natural areas, extend the trail around the lake, and provide for additional recreational amenities like an amphitheater. The master plan should also explore additional facilities appropriate for a community park with significant natural amenities, parking expansion, circulation needs, and expanded natural surface and paved trails. The master plan should seek to influence adjacent neighborhood design to promote the extension of park and open space fingers into the adjacent development areas. The master plan should also include a natural resources section to guide the stewardship of the park's natural resources.

1.1.2. Add user amenities in a phased manner, including permanent restrooms near the pavilions and athletic facilities, benches, and electronic scoreboards.



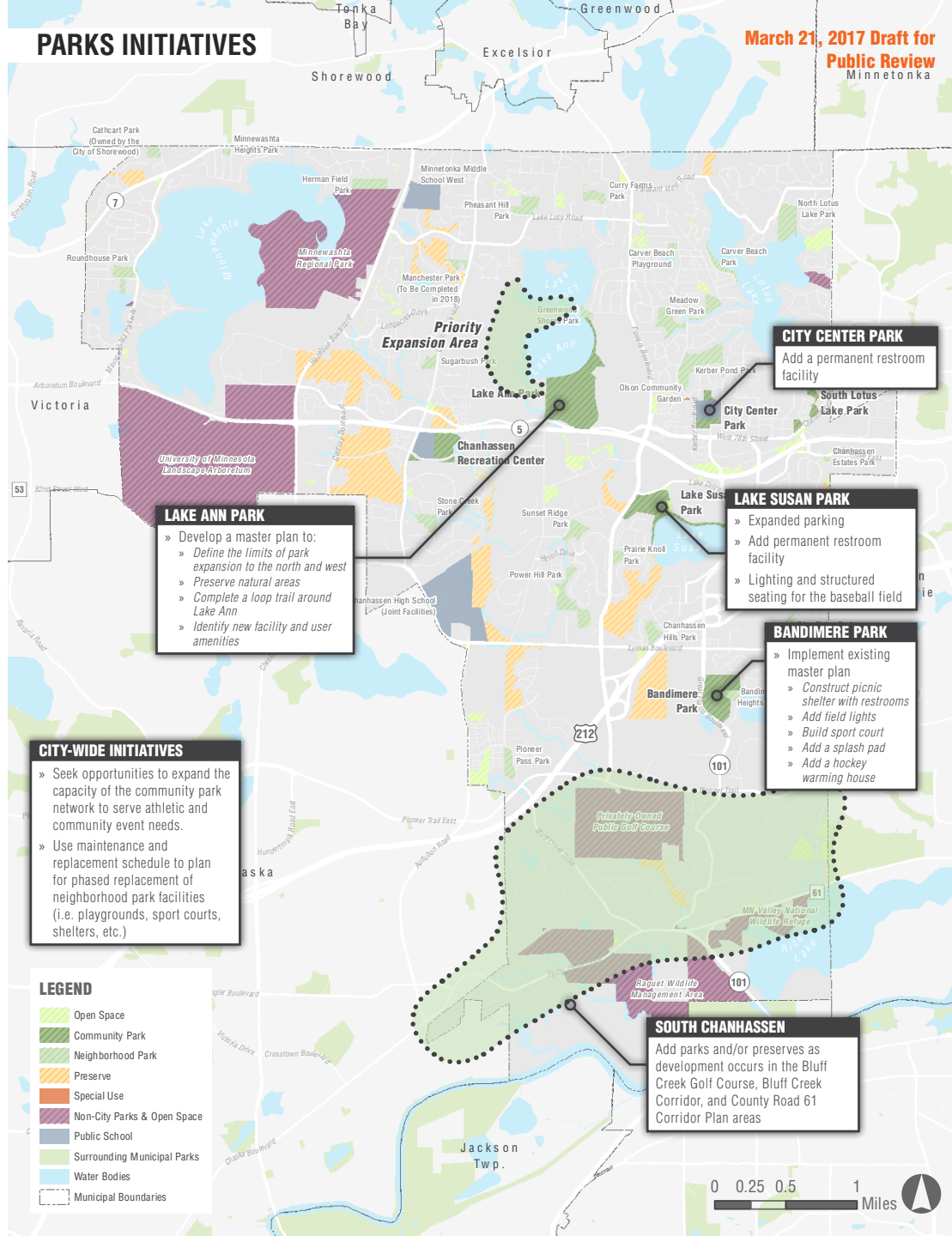
INITIATIVES

1. Parks

- 1.2. Implement the recommendations of the Bandimere Park Master Plan, which includes a picnic shelter with restrooms, splash pad, field lights, sport court, and hockey warming house.
- 1.3. At Lake Susan Park renovate the existing picnic shelter to include permanent restrooms, expand parking and add lighting and structured seating for the baseball field.
- 1.4. Add permanent restrooms to City Center Park.
- 1.5. Seek opportunities to expand the capacity of the community park network to serve athletic and community event needs.
- 1.6. Use maintenance and replacement schedule to plan for phased replacement of neighborhood park facilities (i.e. playgrounds, sport courts, shelters, etc.).
- 1.7. Add parks and/or preserves as development occurs in the Bluff Creek Golf Course, Bluff Creek Corridor, and County Road 61 Corridor Plan areas.

PARKS INITIATIVES

March 21, 2017 Draft for
Public Review
Minnetonka



CITY-WIDE INITIATIVES

- » Seek opportunities to expand the capacity of the community park network to serve athletic and community event needs.
- » Use maintenance and replacement schedule to plan for phased replacement of neighborhood park facilities (i.e. playgrounds, sport courts, shelters, etc.)

LEGEND

	Open Space
	Community Park
	Neighborhood Park
	Preserve
	Special Use
	Non-City Parks & Open Space
	Public School
	Surrounding Municipal Parks
	Water Bodies
	Municipal Boundaries

LAKE ANN PARK

- » Develop a master plan to:
 - » Define the limits of park expansion to the north and west
 - » Preserve natural areas
 - » Complete a loop trail around Lake Ann
 - » Identify new facility and user amenities

CITY CENTER PARK

- » Add a permanent restroom facility

LAKE SUSAN PARK

- » Expanded parking
- » Add permanent restroom facility
- » Lighting and structured seating for the baseball field

BANDIMERE PARK

- » Implement existing master plan
 - » Construct picnic shelter with restrooms
 - » Add field lights
 - » Build sport court
 - » Add a splash pad
 - » Add a hockey warming house

SOUTH CHANHASSEN

Add parks and/or preserves as development occurs in the Bluff Creek Golf Course, Bluff Creek Corridor, and County Road 61 Corridor Plan areas



INITIATIVES

2. Facilities

- 2.1. Identify and construct a year-round signature recreation facility in the community that includes indoor, outdoor, and passive spaces.
 - 2.1.1. Complete an aquatic facilities need study.
 - 2.1.2. Complete a facilities study for the Recreation Center to plan for the renovation and expansion of facilities and services.
 - 2.1.3. Complete a facilities study for the Senior Center to plan for the renovation and expansion of facilities and services.
- 2.2. Add a destination splash pad at a community park. Ensure expansion includes additional parking if needed and user amenities like benches, restrooms, and changing facilities.



INITIATIVES

2. Facilities

- 2.3. Develop and implement a phased improvement plan for improvements to the skate park.
- 2.4. Support pickleball by adding user amenities like seating, wind screens, and sun canopies.
- 2.5. Add permanent concrete tee boxes and improved site amenities to support users at the Bandimere disc golf course.
- 2.6. Improve existing volleyball facilities within community parks through improved seating, nets, and shelters.
- 2.7. Add nature based play at neighborhood parks at regular intervals throughout the community.



INITIATIVES

2. Facilities

- 2.8. Establish an interpretative center with an outdoor lab space and a destination nature based play area to support natural resources outreach and education.
- 2.9. Explore opportunities for a second community garden.
- 2.10. Study a public boat access for Lake Lucy.
- 2.11. Improve accessibility at both the Recreation Center and Senior Center through a reexamination of handicapped parking, trip hazards, and door accesses.



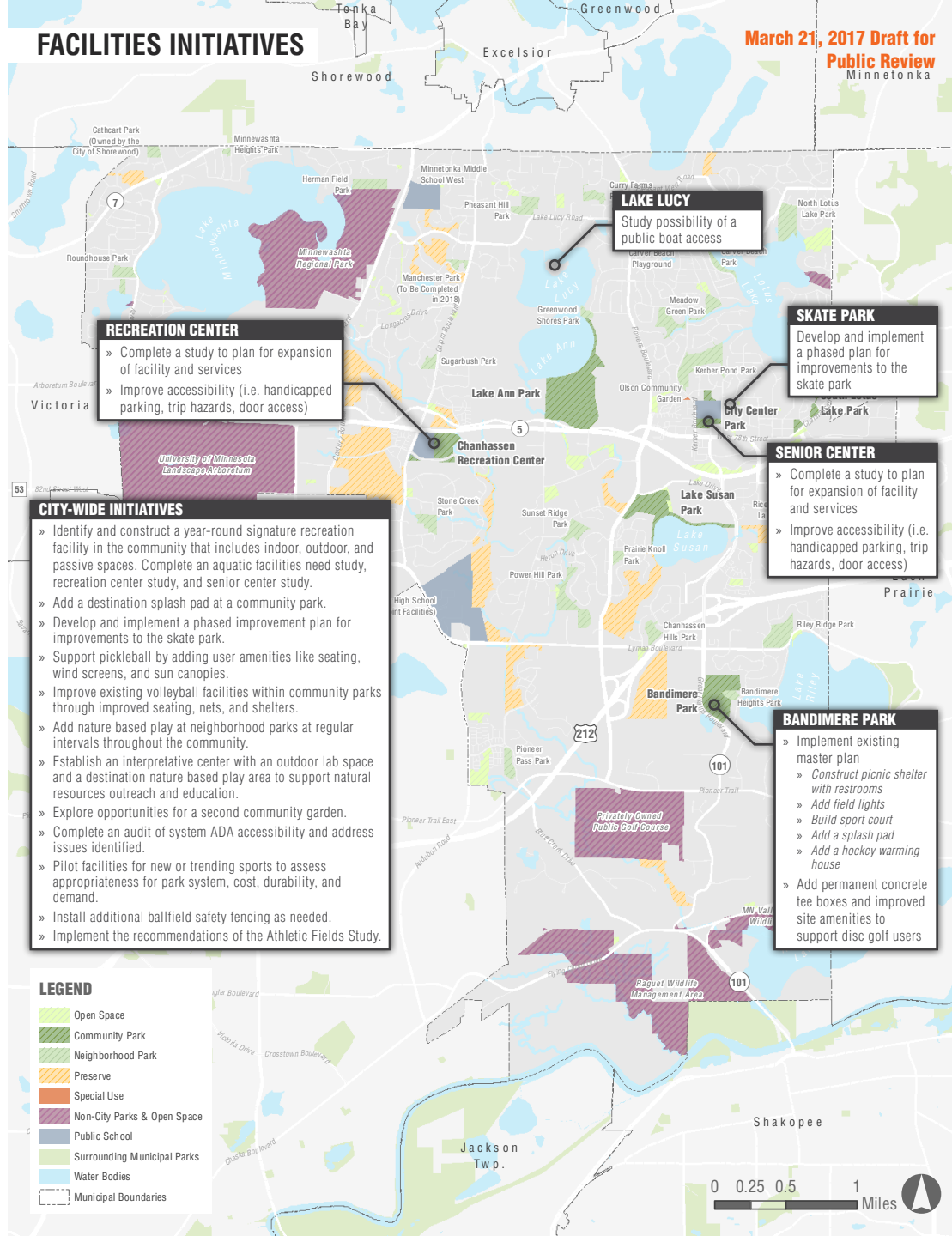
INITIATIVES

2. Facilities

- 2.12. Complete an audit of system ADA accessibility and address issues identified.
- 2.13. Pilot facilities for new or trending sports to assess appropriateness for park system, cost, durability, and demand.
- 2.14. Install additional ballfield safety fencing as needed.
- 2.15. Implement the recommendations of the Athletic Fields Study.

FACILITIES INITIATIVES

March 21, 2017 Draft for
Public Review
Minnetonka



RECREATION CENTER

- » Complete a study to plan for expansion of facility and services
- » Improve accessibility (i.e. handicapped parking, trip hazards, door access)

LAKE LUCY

Study possibility of a public boat access

SKATE PARK

Develop and implement a phased plan for improvements to the skate park

SENIOR CENTER

- » Complete a study to plan for expansion of facility and services
- » Improve accessibility (i.e. handicapped parking, trip hazards, door access)

CITY-WIDE INITIATIVES

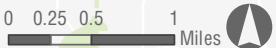
- » Identify and construct a year-round signature recreation facility in the community that includes indoor, outdoor, and passive spaces. Complete an aquatic facilities need study, recreation center study, and senior center study.
- » Add a destination splash pad at a community park.
- » Develop and implement a phased improvement plan for improvements to the skate park.
- » Support pickleball by adding user amenities like seating, wind screens, and sun canopies.
- » Improve existing volleyball facilities within community parks through improved seating, nets, and shelters.
- » Add nature based play at neighborhood parks at regular intervals throughout the community.
- » Establish an interpretative center with an outdoor lab space and a destination nature based play area to support natural resources outreach and education.
- » Explore opportunities for a second community garden.
- » Complete an audit of system ADA accessibility and address issues identified.
- » Pilot facilities for new or trending sports to assess appropriateness for park system, cost, durability, and demand.
- » Install additional ballfield safety fencing as needed.
- » Implement the recommendations of the Athletic Fields Study.

BANDIMERE PARK

- » Implement existing master plan
 - » Construct picnic shelter with restrooms
 - » Add field lights
 - » Build sport court
 - » Add a splash pad
 - » Add a hockey warming house
- » Add permanent concrete tee boxes and improved site amenities to support disc golf users

LEGEND

- Open Space
- Community Park
- Neighborhood Park
- Preserve
- Special Use
- Non-City Parks & Open Space
- Public School
- Surrounding Municipal Parks
- Water Bodies
- Municipal Boundaries



INITIATIVES

3. Trails

- 3.1. Address trail gaps identified on included map (prioritization will come later).
- 3.2. Address trail crossing safety issues identified on included map (prioritization will come later).
- 3.3. Increase awareness and expanded trail use through maps and trail wayfinding to help identify loops, distances, and destinations.
- 3.4. Support trail accessibility through the identification of easily accessible routes that do not have steep slopes, gaps, or challenging transitions.
- 3.5. Enhance user experiences through kiosks/signage at existing trailheads, benches, lighting, garbage cans, etc.

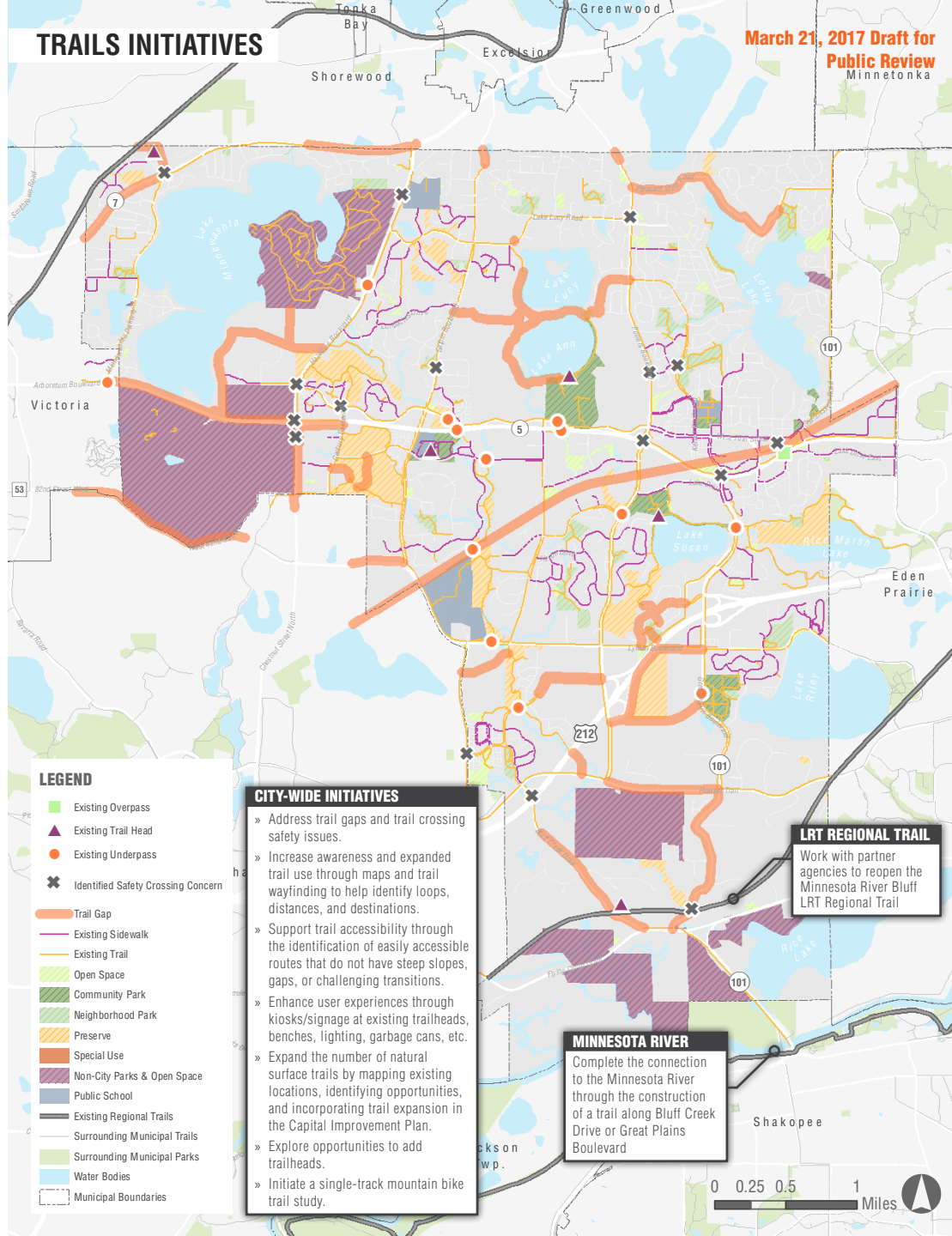
INITIATIVES

3. Trails

- 3.6. Complete the connection to the Minnesota River through the construction of a trail along Bluff Creek Drive or Great Plains Boulevard.
- 3.7. Expand the number of natural surface trails by mapping existing locations, identifying opportunities, and incorporating trail expansion in the Capital Improvement Plan.
- 3.8. Explore opportunities to add trailheads.
- 3.9. Work with partner agencies to reopen the Minnesota River Bluff LRT Regional Trail.
- 3.10. Initiate a single-track mountain bike trail study.

TRAILS INITIATIVES

March 21, 2017 Draft for
Public Review
Minnetonka



LEGEND

- Existing Overpass
- Existing Trail Head
- Existing Underpass
- Identified Safety Crossing Concern
- Trail Gap
- Existing Sidewalk
- Existing Trail
- Open Space
- Community Park
- Neighborhood Park
- Preserve
- Special Use
- Non-City Parks & Open Space
- Public School
- Existing Regional Trails
- Surrounding Municipal Trails
- Surrounding Municipal Parks
- Water Bodies
- Municipal Boundaries

CITY-WIDE INITIATIVES

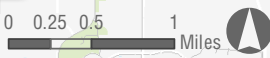
- » Address trail gaps and trail crossing safety issues.
- » Increase awareness and expanded trail use through maps and trail wayfinding to help identify loops, distances, and destinations.
- » Support trail accessibility through the identification of easily accessible routes that do not have steep slopes, gaps, or challenging transitions.
- » Enhance user experiences through kiosks/signage at existing trailheads, benches, lighting, garbage cans, etc.
- » Expand the number of natural surface trails by mapping existing locations, identifying opportunities, and incorporating trail expansion in the Capital Improvement Plan.
- » Explore opportunities to add trailheads.
- » Initiate a single-track mountain bike trail study.

LRT REGIONAL TRAIL

Work with partner agencies to reopen the Minnesota River Bluff LRT Regional Trail

MINNESOTA RIVER

Complete the connection to the Minnesota River through the construction of a trail along Bluff Creek Drive or Great Plains Boulevard



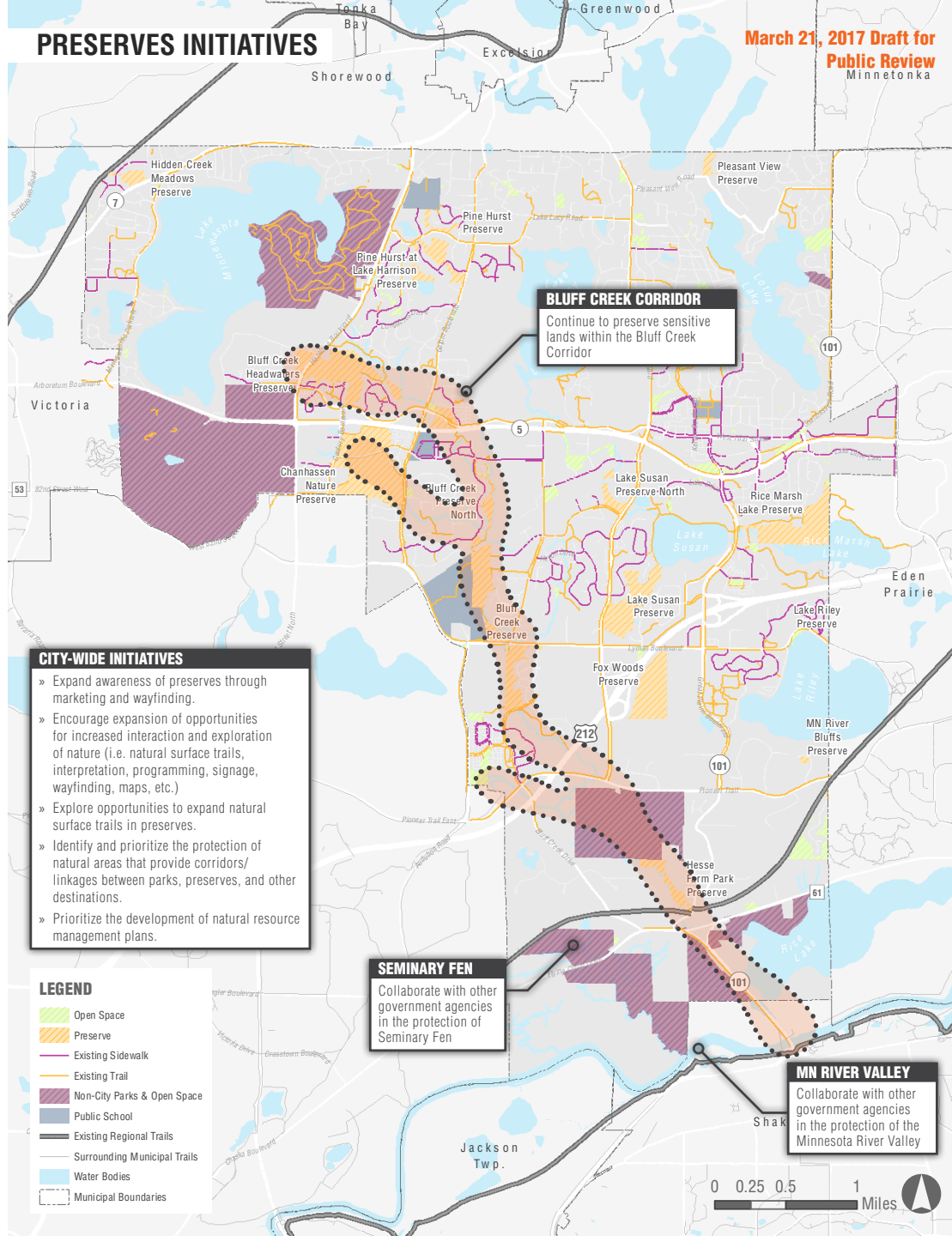
INITIATIVES

4. Preserves

- 4.1. Expand awareness of preserves through marketing and wayfinding.
- 4.2. Encourage expansion of opportunities for increased interaction and exploration of nature (i.e. natural surface trails, interpretation, programming, signage, wayfinding, maps, etc.)
- 4.3. Explore opportunities to expand natural surface trails in preserves.
- 4.4. Identify and prioritize the protection of natural areas that provide corridors/linkages between parks, preserves, and other destinations.
- 4.5. Prioritize the development of natural resource management plans.
- 4.6. Collaborate with other government agencies in the protection of the Seminary Fen and the Minnesota River Valley.
- 4.7. Continue to preserve sensitive lands within the Bluff Creek Corridor.

PRESERVES INITIATIVES

March 21, 2017 Draft for
Public Review
Minnetonka



BLUFF CREEK CORRIDOR

Continue to preserve sensitive lands within the Bluff Creek Corridor

CITY-WIDE INITIATIVES

- » Expand awareness of preserves through marketing and wayfinding.
- » Encourage expansion of opportunities for increased interaction and exploration of nature (i.e. natural surface trails, interpretation, programming, signage, wayfinding, maps, etc.)
- » Explore opportunities to expand natural surface trails in preserves.
- » Identify and prioritize the protection of natural areas that provide corridors/linkages between parks, preserves, and other destinations.
- » Prioritize the development of natural resource management plans.

LEGEND

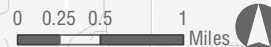
- Open Space
- Preserve
- Existing Sidewalk
- Existing Trail
- Non-City Parks & Open Space
- Public School
- Existing Regional Trails
- Surrounding Municipal Trails
- Water Bodies
- Municipal Boundaries

SEMINARY FEN

Collaborate with other government agencies in the protection of Seminary Fen

MN RIVER VALLEY

Collaborate with other government agencies in the protection of the Minnesota River Valley



INITIATIVES

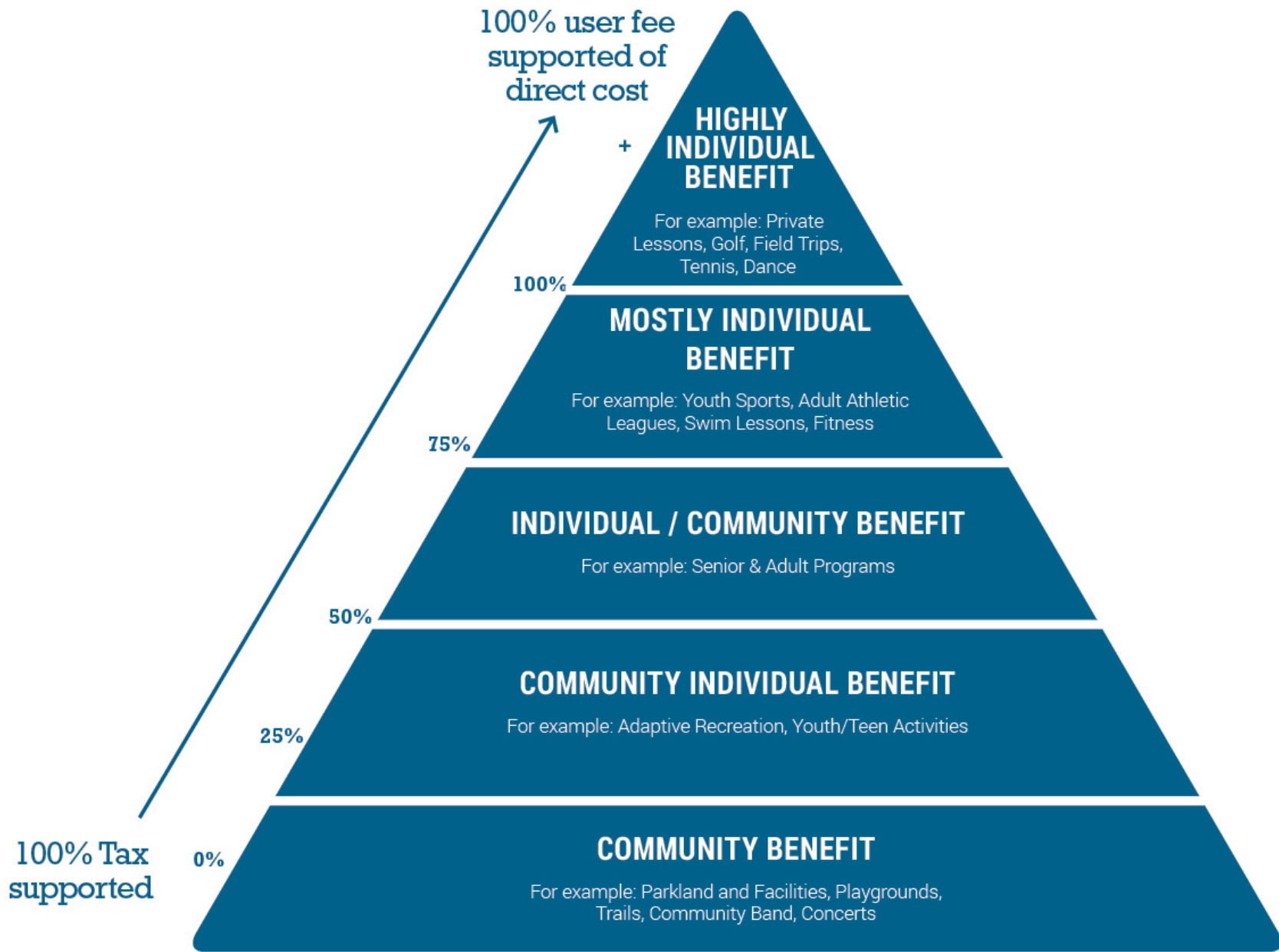
5. Programming

- 5.1. Continue to host at least five major community events in the city (currently there is Feb Fest, Easter Egg Hunt, 4th of July, Halloween, Tree Lighting).
- 5.2. Continue to partner with area business and organizations to provide summer concert series.
- 5.3. Continue to collaborate with schools and other organizations to provide public recreation activities in the parks.
- 5.4. Expand the number of informal, indoor and outdoor, seasonal recreation events.
- 5.5. Expand nature based events and programs.

INITIATIVES

5. Programming

- 5.6. Expand Senior Center awareness through rebranding and a marketing campaign.
- 5.7. Collaborate with high school youth leaders to organize quarterly teen activities (fun runs, music, arts) and pilot programs.
- 5.8. Collaborate with the Arts Consortium of Carver County to support the expansion of arts related programming in the City.
- 5.9. Establish an Event Management Plan to address the registration and notification process; cost recovery; and strategies to minimize general park user impacts associated with non-City sponsored events seeking to utilize Chanhassen's parks or trails.
- 5.10. Annually evaluate that the City's pricing structure reflects the benefits of the program or event to the community versus the individual.



INITIATIVES

6. Operations

- 6.1. Ensure the System Plan is used as a basis for the annual budgeting and capital improvement planning process to evaluate and address the parks and recreation system needs, including staffing, program/event expansion, facility expansion, maintenance, and replacement.
- 6.2. Communicate benefits of parks and recreation system, including the impact of the preserves and races/tournaments on the business community.
- 6.3. Incorporate stormwater best practices, such as rain gardens, bio-swales, and permeable pavers, in park and facility design.
- 6.4. Reduce impervious surfaces and explore turf conversion to native plantings in the design of parks and facilities.



INITIATIVES

6. Operations

- 6.5. Preserve natural buffers and setbacks around wetlands, rivers, ponds, reservoirs, and lakes on appropriate public lands and parks.
- 6.6. Improve water conservation and energy efficiency of facilities when renovating or constructing new.
- 6.7. Annually assess trail maintenance policies for debris removal and winter plowing. Reevaluate and amend winter plowing plans based on factors like historical maintenance, commuting routes, safe routes to school, and resident requests.
- 6.8. Establish a formal process for program and event development and evaluation and trend analysis.
- 6.9. Consider the creation of a tobacco use policy for the parks and recreation system.
- 6.10. Incorporate innovative sustainable design and maintenance practices to make Chanhassen a model to residents and surrounding communities.

SUGGESTED OUTREACH

- » **Open House**

Thursday, April 6th - 5:30 to 7:30 p.m. - Recreation Center

- » **Social Pinpoint**

<https://hkgi.mysocialpinpoint.com/chanparks#/>

- » **Pop-Ups**

- » **Other outreach needed?**

POLICIES

- 1. Provide a comprehensive system of park, recreation, and open space facilities to serve active and passive needs.**
 - 1.1. Provide a system that includes neighborhood parks, community parks, preserves, and special use parks based on the standards outlined in Table X-X.
 - 1.2. Ensure residents have convenient access to park and recreation facilities at the neighborhood and community park level by ensuring all residents are within a ½ mile of a neighborhood park and 2 miles of a community park.
 - 1.3. Provide a mix of athletic complexes with user amenities to meet the needs of recreational, league, and tournament play.

POLICIES

- 1. Provide a comprehensive system of park, recreation, and open space facilities to serve active and passive needs.**
 - 1.4. Provide user amenities as appropriate for the type of park
 - 1.4.1. To serve local users walking or biking to their neighborhood park, provide user amenities like benches, bike racks, shade trees, trash and recycling receptacles, and seasonal restrooms.
 - 1.4.2. To serve community and regional users, provide at community parks amenities like benches, picnic tables, bike racks, information kiosks, shelters, permanent restrooms, trash and recycling receptacles, and access to technology.
 - 1.5. Balance the use of park and recreational facilities for local needs with events, tournaments, gatherings, and programming.
 - 1.6. Support year-round recreation through a mixture of indoor and outdoor facilities.

POLICIES

- 1. Provide a comprehensive system of park, recreation, and open space facilities to serve active and passive needs.**
 - 1.7. Explore opportunities to expand the number and quality of the community's preserves to protect natural areas that are ecologically sensitive or representative of the City's natural heritage.
 - 1.8. Provide areas for small and large group community gathering through the distribution of shelters in neighborhood and community parks.
 - 1.9. Seek opportunities to distribute separated, 2 to 5 year old playgrounds throughout the community.

POLICIES

2. Maintain a comprehensive and easily navigable trail and sidewalk system that connects neighborhoods to park and recreation facilities, schools, community destinations, and other communities.

- 2.1. Prioritize the elimination of trail gaps based on safety, connectivity, and cost.
- 2.2. Improve access to and awareness of trails within preserves.
- 2.3. Improve the trail user experience through improved maintenance, wayfinding, and amenities (i.e. benches, trash cans, etc.).
- 2.4. Establish trails and sidewalks as a key transportation network in new development.
- 2.5. Explore opportunities to expand the trail and sidewalk system through neighborhoods to enhance connections to surrounding amenities.

POLICIES

- 2. Maintain a comprehensive and easily navigable trail and sidewalk system that connects neighborhoods to park and recreation facilities, schools, community destinations, and other communities.**
 - 2.6. Prioritize the construction of grade-separated crossings of roads for trails based on safety, demand, and need warrants.
 - 2.7. Preserve vacated or abandoned right-of-way for trail purposes.
 - 2.8. Collaborate with local and regional agencies on the establishment of regional trails.
 - 2.9. Partner with surrounding communities to create inter-community trail connections that enables users to travel to surrounding communities and regional trails without having to ‘jump’ between different trails and sidewalks.

POLICIES

3. Ensure all residents have the opportunity to participate in recreation, education, cultural, and arts activities.

- 3.1. Strive to offer a diversity of programs at a variety of times to serve all age groups.
- 3.2. Explore art, culture and nature based programming and partnerships to serve non-athletic community needs.
- 3.3. Program and support partners' events to draw residents to park and recreation facilities.
- 3.4. Encourage, partner with, and support existing associations, clubs, and groups to fill programming gaps that the City cannot fill.
- 3.5. Expand partnerships with local schools to serve community needs.

POLICIES

4. Be a leader in environmental sustainability.

- 4.1. Preserve remaining natural areas as opportunities arise.
- 4.2. Support park users' efforts by offering recycling and/or composting.
- 4.3. Manage the use of pesticides within parks.
- 4.4. Explore opportunities to convert existing turf areas to native plantings.
- 4.5. Reduce impacts on lakes, waterways, and groundwater by incorporating stormwater best practices in park and facility design.
- 4.6. Use sustainable building practices when developing, expanding or renovating facilities.
- 4.7. Improve energy efficiency when renovating or constructing new facilities.
- 4.8. Use native trees/shrubs planted in appropriate locations to conserve energy.
- 4.9. Raise public awareness of the importance of sustainability and the City's efforts through social media, interpretation, and educational programming.

POLICIES

5. Proactively plan for a high quality, efficient parks and recreation system that meets community needs.

- 5.1. Encourage parks to be defining features of neighborhoods through the placement of parks in a visible location and the establishment of connecting trails and sidewalks.
- 5.2. Encourage participation by neighborhoods, community groups, and local artists in the planning for and development of park and recreation facilities. Identify locations for unique features or improvements to avoid a system of “cookie cutter” parks.

POLICIES

5. Proactively plan for a high quality, efficient parks and recreation system that meets community needs.

5.3. Enhance users' experiences through well-designed exterior environments/places that give consideration to how all members of the public can engage in these spaces in different ways (educational, cultural, performance, artistic, etc.), how places can be interconnected throughout the community, and how lighting contributes to inviting spaces. As part of design process, seek opportunities to use artist-created park features rather than standard catalog pieces.



POLICIES

- 5. Proactively plan for a high quality, efficient parks and recreation system that meets community needs.**
 - 5.4. Encourage the use of the park system for performance art, temporary art installations, and public art.
 - 5.5. Explore opportunities to reconfigure or improve efficiencies within existing parks to serve identified community needs.
 - 5.6. Maintain and routinely review field management plan to ensure high quality fields through rotational resting of fields based on a schedule/level of use and postponement of use during and after significant rain events.
 - 5.7. Continue strong partnership and communication with local associations, clubs, and other organizations to ensure facilities are meeting their needs.
 - 5.8. Integrate trails into the planning and design process for public improvements and land development.

POLICIES

5. Proactively plan for a high quality, efficient parks and recreation system that meets community needs.

- 5.9. Design parks and facilities to address active and passive needs while giving consideration to the environmental context, surrounding land uses, and future maintenance and operational needs.
- 5.10. Establish and routinely update a sustainable operations, maintenance and replacement schedule for all parks and facilities with particular attention on playgrounds, basketball courts, tennis courts, pickleball courts, shelters, etc.
- 5.11. Collaborate with Engineering Department on trail pavement management program.

POLICIES

- 6. Implement strategies to increase the City's capacity to maintain and expand the parks and recreation system.**
 - 6.1. Identify and expand partnerships with area recreation associations, clubs and groups; local businesses; private organizations; neighborhood groups; and other public agencies.
 - 6.2. Utilize our facilities to capitalize on opportunities to generate revenue.
 - 6.3. Evaluate options to expand the use of volunteers to support park operations and programming.
 - 6.4. Explore seeking voter approval to issue bonds or levy a tax to expand or support the needs of the park and recreation facilities and system.
 - 6.5. Encourage property owners interested in donating or granting conservation easements on their land.
 - 6.6. Support the creation of a non-profit parks and recreation foundation.