



Parks and Recreation Commission

CHANHASSEN

Parks & Recreation System Plan

December 13, 2016

PRESENTATION OVERVIEW

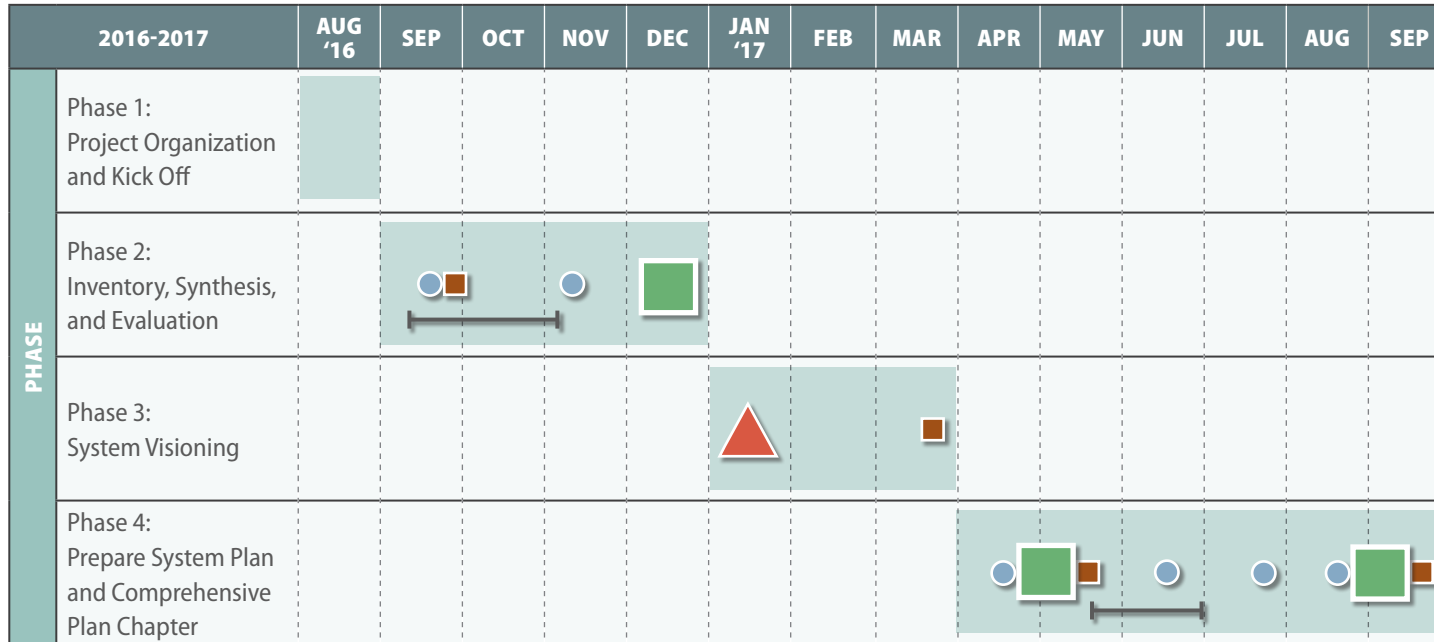
- 1. Project Process**
- 2. Community Engagement Recap**
- 3. Recreation Trends**
- 4. System Evaluation and Needs Assessment Findings**
- 5. Peer Community Comparisons & National Standards**
- 6. Key Findings**
- 7. Next Steps**

WHAT IS A PARK SYSTEM PLAN?





- » A document that serves as a comprehensive guide to City staff and City decision makers
- » A long-range (10-25 years) vision and guide for parks, recreation, natural areas, and trails
- » Provides guidance on planning for maintenance and equipment replacement

SYSTEM PLAN PROCESS & SCHEDULE

PROJECT SCHEDULE



MEETING + INPUT SUMMARY:

-  Advisory Committee Meetings
-  Community Engagement Activities
-  Vision Workshop (Advisory Committee and **Park and Recreation Commission**)
-  City Council Meetings

 **PARK AND RECREATION COMMISSION MEETINGS**



COMMUNITY ENGAGEMENT RECAP

COMMUNITY ENGAGEMENT RECAP

» Pop-Up Meetings

- 8 pop-ups

» 2 Stakeholder Meetings

- Senior Commission
- Athletic Associations

» 4 Online Engagement Efforts

- General Community Survey (935 respondents)
- Recreation Center Survey (322 respondents)
- Senior Center Survey (120 respondents)
- Social Pin Point (170 respondents)



GENERAL COMMUNITY QUESTIONNAIRE

- Over **80%** of respondents use Chanhassen parks and recreation at least **once a week**
- 895 respondents reported that they use parks and recreation facilities in other communities: **Eden Prairie, Chaska, Excelsior, Victoria**, and more
- Most used facilities: **trails**, neighborhood parks, community parks, beaches, recreation center, preserves
- Most popular programs: **community events**, youth activities
- When asked how well the system is meeting the needs of residents, people responded favorably. The top **unmet needs** are: **Rec Center**, adult sports and classes
- **Most desired** facilities: **natural play areas, indoor pool, outdoor pool**

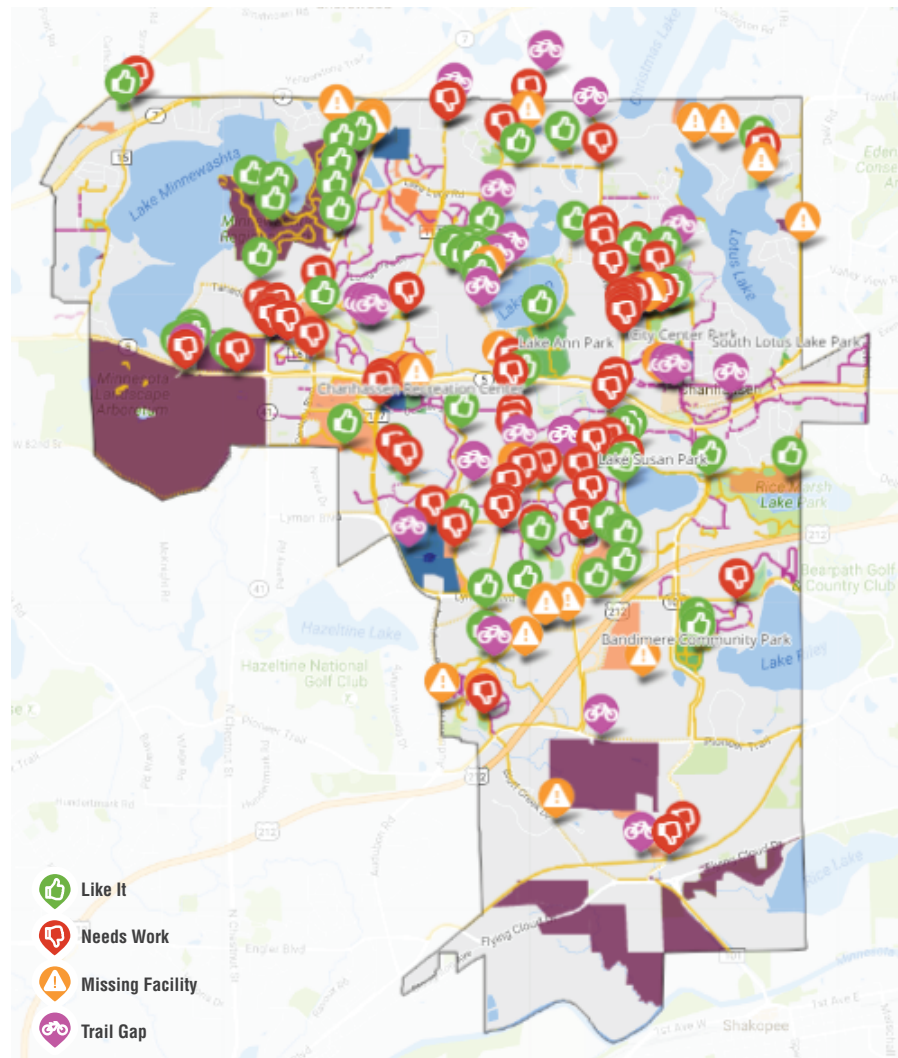
REC CENTER QUESTIONNAIRE

- **42%** of respondents **use the Rec Center a few times a year**; 20% of respondents never use the Rec Center
- Of the 20% that never use it, **35%** are **not interested** in what it offers, **18%** use a rec center in **another community**, 18% use private rec facilities, and 13% are unaware of it
- **Most popular** facility usage among respondents: **attending an event** (39%), participating in a class (35%), and using the fitness center (27%)
- When asked how important additional facilities and programs are, respondents wanted: **running/walking track, indoor pool**, larger fitness center, and more exercise classes / studios

SENIOR CENTER QUESTIONNAIRE

- **33%** of respondents use the Senior Center **once a week**; 24% use it a few times per year
- Most popular programs: **field trips** (51%), art/education class (42%)
- 31% of respondents said they never use the Senior Center because they: are **unaware of it**, are not interested in what it offers, or use a senior center in another community
- Most important additional facilities/programs: **more programming, fitness class space**, large meeting/event room
- **Similar amount of support** for maintaining Senior Center as is, replacing with new isolated facility, and replacing with facility adjacent to Rec Center

SOCIAL PINPOINT

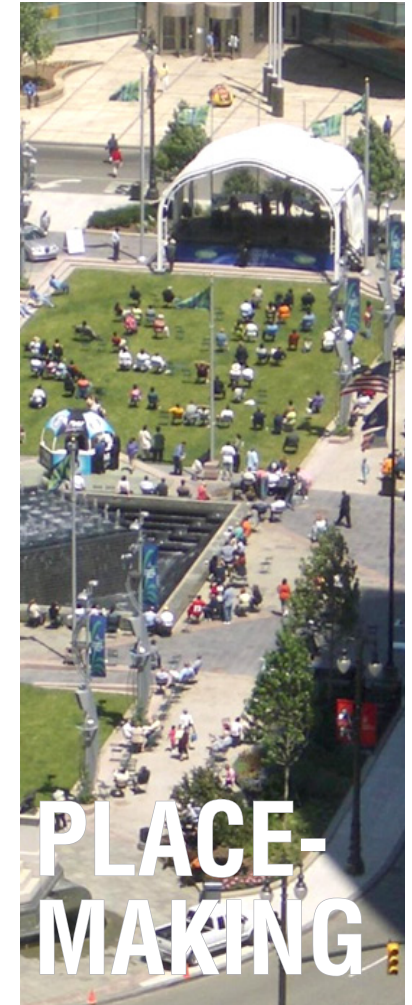


- Majority of comments were about the **trail system**: repair trails, close a trail gap, build a tunnel or safe crossing
- Many comments related to **acquisition of additional open space around Lake Ann**
- High desire for **more natural and open space** throughout the city
- More **safe crossings** of Hwy 5 desired as well as trail connection to Arboretum

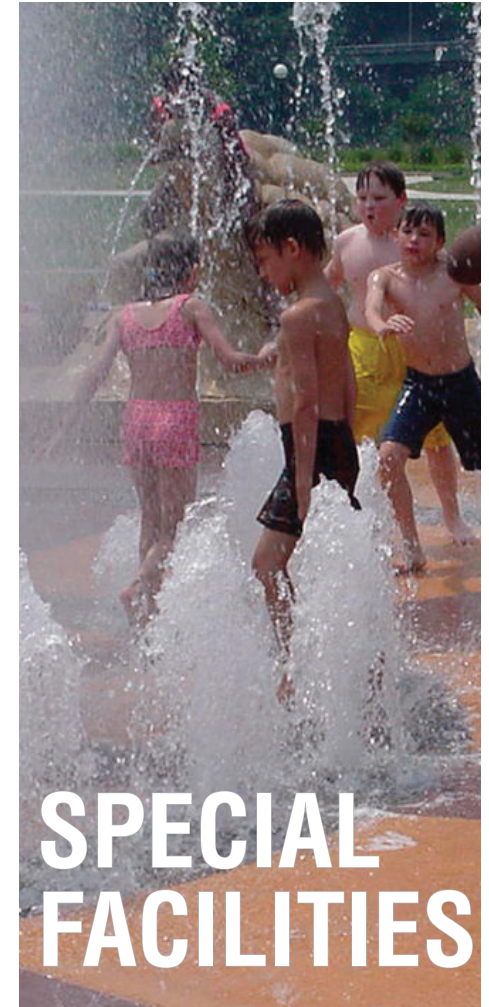


PARKS & RECREATION TRENDS

PARKS & RECREATION TRENDS



PARKS & RECREATION TRENDS





SYSTEM EVALUATION & NEEDS ASSESSMENT FINDINGS

SYSTEM EVALUATION

- » Gap and Distribution Analysis
 - GIS mapping process
 - Gap Analysis looks at residential areas within 1/4 mile to 1/2 mile of parks
 - Distribution Analysis looks at where certain facilities are located throughout the City



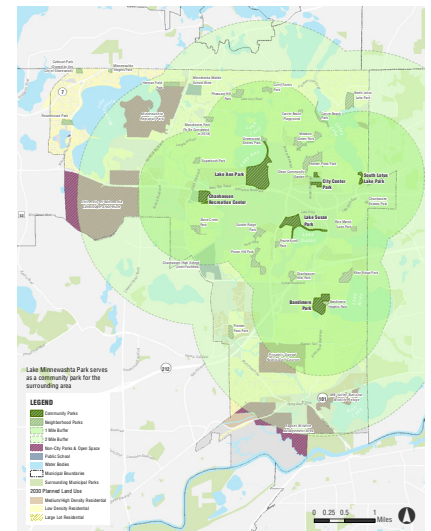
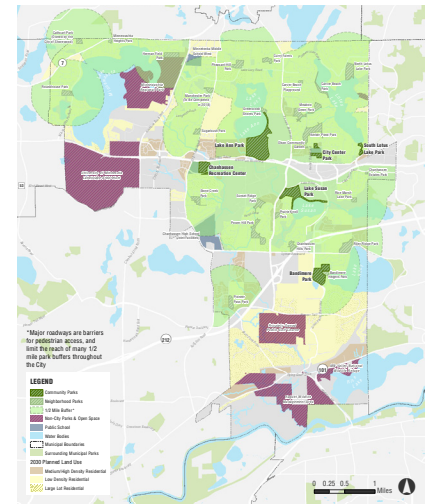
GAP ANALYSIS

» Neighborhood Parks

- Most residential neighborhoods served by a neighborhood park
- Largest gap exists south of 212
- Future concern: planned medium and high density residential areas

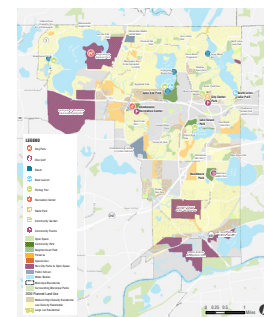
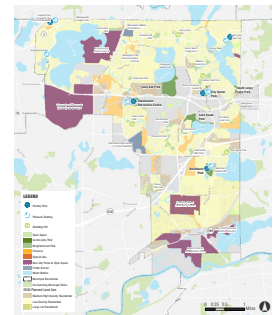
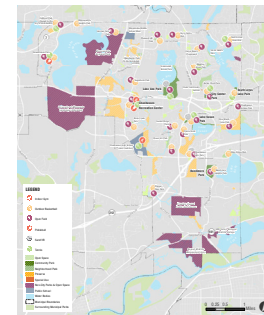
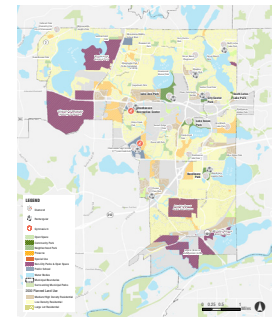
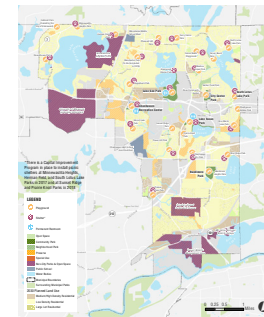
» Community Parks

- Distributed to serve the core of the city
- Minnewashta Regional Park serves the northwest area
- Gap south of Hwy 212



DISTRIBUTION ANALYSIS

- » Playgrounds & Shelters
 - Good access, except in south
- » Athletic Fields
 - Primarily in the core of the city
- » Informal Summer Recreation
 - Tennis and sand volleyball more centrally located
- » Informal Winter Recreation
- » Specialty Recreation
 - At lakes and community parks



A background image showing a group of students in a classroom. Some students in the foreground are raising their hands, while others are visible in the background. The image is semi-transparent and serves as a backdrop for the text.

PEER COMMUNITY COMPARISON & NATIONAL STANDARDS

PEER COMMUNITY COMPARISON

» **Compared to:** Chaska, Cottage Grove, Elk River, Inver Grove Heights, Lino Lakes, Prior Lake, Rosemount, Savage, Shakopee, Stillwater

» Chanhassen is similar to or higher than average in most categories

» Chanhassen has fewer parks and number of parks per 10,000 people than average

» Chanhassen has more overall park acreage than other communities

	<i>Chanhassen</i>	<i>Range</i>	<i>Average</i>
<i>City area in square miles</i>	22.9	7.98 - 43.82	26.4
<i>Total City population</i>	24,432	18,674 - 39,677	27,362
<i>Population per square mile</i>	1,068	535.08 - 2,339.81	1,240
<i>Number of Parks</i>	30	18 - 55	33
<i>Number of Parks per 10,000 people</i>	12.3	7.7 - 22.5	12.7
<i>Number of community parks</i>	6	0 - 13	5
<i>Number of community playfield parks (sports complexes)</i>	*Some community parks have playfield components	0 - 5	2
<i>Number of neighborhood parks (include pocket parks)</i>	24	15 - 50	22
<i>Number of dog parks</i>	1	0 - 2	0.6
<i>Total Parks/Parkland Acreage</i>	888	141 - 1,676	712
<i>Acreage of Parks per 1,000 Population</i>	36	6.7 - 47.3	22

PEER COMMUNITY COMPARISON

- » Tennis, basketball, and playgrounds are higher than average - are these a priority such that they should be developed and replaced at same rate?
- » No indoor ice rink in Chanhassen -- other cities typically have at least one

	<i>Chanhassen</i>	<i>Range</i>	<i>Average</i>
<i>Total Trail Miles</i>	76	15 - 113.8	42.5
<i>Miles of cross country ski trails</i>	-	0 - 9.0	2.4
<i>Number of playgrounds</i>	24	14 - 36	22.6
<i>Number of playgrounds per 10,000 residents</i>	9.8	4.1 - 14.7	6.7
<i>Number of tennis courts</i>	15	1 - 17	7.5
<i>Number of tennis courts per 10,000 residents</i>	6.1	0.4 - 5.4	2.6
<i>Number of pickleball (dedicated, shared)</i>	10	0 - 10	3.9
<i>Number of outdoor basketball courts</i>	19	5 - 22	11.1
<i>Number of outdoor basketball courts per 10,000 residents</i>	7.8	2.1 - 9.0	4.1
<i>Number of outdoor ice rinks (hockey/pleasure)</i>	5	4 - 13	7.7
<i>Number of outdoor ice rinks per 10,000 residents</i>	2	1.5 - 5.3	2.9
<i>Number of indoor ice rinks</i>		0 - 7	2.0
<i>Number of sledding hills</i>	5	0 - 2	0.7

PEER COMMUNITY COMPARISON

- » Ballfields and rectangular, multi-use fields are high in Chanhassen, but most are small fields
- » Outdoor aquatic facilities is high -- all beaches in Chanhassen
- » Lacking permanent restrooms

	<i>Chanhassen</i>	<i>Range</i>	<i>Average</i>
<i>Number of Ballfields</i>	28	13 - 46	23.9
<i>Number of Ballfields per 10,000 residents</i>	11.5	5.6	8.8
<i>Number of soccer/lacrosse/football fields</i>	22	4 - 72	16.1
<i>Number of soccer/lacrosse/football fields per 10,000 residents</i>	9	1.6 - 18.1	5.1
<i>Number of volleyball courts</i>	4	0 - 6	4
<i>Number and type of outdoor aquatic facilities (pools, water parks, splash pads, beaches)</i>	5 (1 main/guarded & 4 small/unguarded)	0 - 2	0.7
<i>Number of golf courses</i>	2.0	0 - 2	0.9
<i>Other recreation facilities (disc golf, community gardens, archery ranges, etc.)</i>	1 disc golf, 1 community garden, 1 dog park in partnership with Carver County	other cities: archery, mountain bike course, bmx course, skate park, community gardens, horseshoes, fishing piers, frolf	
<i>Number of recreation centers</i>	1	0 - 9	1.8
<i>Number of shelters</i>	17	5 - 35	13.9
<i>Number of permanent bathroom facilities</i>	3	0 - 11	5.3

NATIONAL STANDARDS

Facility	Service Area	Min Number per Population	Number of Existing Facilities in Chanhasseen	Current Facilities Minimum Standard (pop. 24,432)	2040 Facilities Minimum Standard (pop. 37,100)	2040 Deficit
Playgrounds	Half-mile	1 per 1,000-2,000	24	12-24	19-37	+5 to -13
Diamond Fields	"Adult: 10-15 minute travel time Youth: 1-2 miles"	1 per 3,000	28	8	12	+16
Rectangular Fields	1-2 miles	1 per 4,000	22	6	9	+13
Tennis	1 mile	1 per 2,500-4,500	15	5-10	8-15	+11 to +4
Outdoor Basketball	1/2-1 mile	1 per 5,000 - 7,500	19	3-5	5-7	+23 to +21
Swimming Pools / Aquatics	15-30 minute travel time	"1 per 20,000-40,000 (pools should accommodate 3-5% of total population at a time)"	5	1	1	+4
Ice Hockey	10-15 minute travel time	"Outdoor: 1 per 5,000-10,000 (indoor rinks influence demand for outdoor rinks)"	5	2-5	4-7	+2 to -1
"Indoor Gyms (Full Size)"	10-15 minute travel time	1 gym per 25,000	2	1	1	+1
Outdoor Volleyball	2 miles	1 per 7,500-15,000	4	1-3	2-5	+4 to -1
Golf Courses	Entire City	9 holes per 25,000	2	1	1	+1
Off-Leash Dog Exercise Areas	10-15 minute travel time	1 per 50,000	1	1	1	0
Community Gardens	1 per 25,000 residents	N/A	1	1	1	0

mostly small fields

beaches, no pool

PRORAGIS (NRPA)

- » National Recreation and Parks Association's benchmarking tool
- » Based on what agencies enter into system-- not "apples to apples comparison"
- » In comparison, Chanhassen looks good

Comparison Figure	Based on	Median	Chanhassen
Residents per Park	Population (20K-50K)	1,894	814
Residents per Park	Number of FTEs (10-24)	2,239	814
Acres of Park Land per 1,000 Residents	Population (20K-50K)	9.67	36
Acres of Park Land per 1,000 Residents	Number of FTEs (10-24)	8.16	36

The background of the slide is a collage of three images. The top-left image shows a group of people in a meeting, with some individuals pointing at a screen. The top-right image shows a group of ballerinas in white tutus performing on a stage. The bottom image shows a group of people in a meeting, with some individuals pointing at a screen.

KEY FINDINGS

KEY FINDINGS: PARKS

1. Chanhassen has a **large number of park acres** compared to other cities of similar population. The City is still active in developing new parks, which should serve its **growing population** well into the future. Future park development should be strategic to address new development and currently underserved areas.
2. Accessibility to a park (neighborhood, regional, community, etc) is good. There are **pockets of low accessibility** in the south part of the city due to fewer parks there, and a few areas in the northwest part of the city due to **barriers to access** (Lake Minnewashta, major roads). More tunnels under busy roads would help increase park access.
3. **Partnerships** with school district have contributed positively to availability of facilities and efficiency of operations.
4. Interest in **park amenities** like permanent restrooms, shade, lighting, grills, wifi, etc.
5. **Picnic shelters** are in high demand and rent out quickly.

KEY FINDINGS: FACILITIES (PG 1)

1. There is interest from residents in improving small neighborhood parks with **updated facilities** (basketball courts, playgrounds) that are falling apart or old.
2. Community parks are generally well used and well liked. Some residents feel that **athletic facilities could be enhanced** and **permanent restrooms** should be added.
3. There is a desire for an improved, **state of the art Recreation Center** with indoor facilities like a running/walking track, larger fitness center, indoor/outdoor pool, meeting spaces, family activities, and additional fitness classes. Many residents say they use Recreation Centers in Eden Prairie, Chaska, and Victoria because the Chanhassen Rec Center is not up to par with their needs. **Rec Center and Senior Center should be co-located** to improve overall usage and facility offerings.
4. Seniors appreciate the existing **Senior Center** offerings, but there is a desire for **more active programming**, fitness facilities, and meeting space. Increased awareness of Senior Center continues to be needed.

KEY FINDINGS: FACILITIES (PG 2)

5. In comparison to other cities, Chanhassen meets or exceeds the amount of outdoor facilities and fields. **Athletic fields should be evaluated by field size** and need for each size in order to properly allocate fields at various parks. While in good shape, there are improvements needed to better serve athletics, such as lighting, restrooms, etc..
6. While an **indoor skating/hockey rink is not provided in Chanhassen**, there are rinks available in Chaska (2), Victoria (2), Shakopee (1), Eden Prairie (3), and Minnetonka (4).
7. Chanhassen needs to continue to evaluate and **respond to changing recreation trends**. For example, while the City has responded well to pickleball, it has not addressed disc golf needs for experienced players as well.

KEY FINDINGS: OPEN SPACES

1. Most residents are very **happy with the amount of perceived natural open space** throughout the city.
2. There is an opportunity to **improve connections** to the City's park preserves to address interest in **more natural play areas**. While valued for their visual appeal, park preserves are currently not widely used.
3. Residents want the city to **acquire more natural open space (particularly around Lake Ann)** in order to preserve land, prevent future development within the City, and to provide **more natural trail corridors**.

KEY FINDINGS: PROGRAMMING

1. The city has good working relationships with **recreation groups and associations**, who do a good job of providing a variety of programs.
2. The City provides **introductory level athletic programming** for very young children (under 6) and **team, league athletics (softball) for adults**. There is a desire from some residents that the young athletic programming be improved in terms of structure and coaching.
3. Interest in **more teen, adult, and senior programming** in arts, fitness, and outdoor education.
4. The City provides several holiday, themed, and summer concert **events, which are well attended** by residents. There is **interest in additional events** in the parks, possibly associated with “places” defined for those events.
5. **Better facilities are desired for events**, such as a kitchen.
6. There is a desire from many residents for **the City to provide more programming, such as aquatics**, to meet the needs of those who can't afford private facilities.

KEY FINDINGS: TRAILS

1. Most popular facility provided in community. Community's **76 miles of trails is notable** in comparison to peer communities.
2. There is a strong desire to **complete trail gaps**, continue to expand the system, and to **improve crossings of busy, high traffic roads**. High priority areas include the crossing of Highway 5 and the completion of a trail around Lake Ann and Lake Lucy.
3. **Safety issues** need to be addressed on the trail system.
4. Interest in **natural surface trails**.
5. **Ongoing maintenance**, lighting to expand nighttime use, and winter access important.

KEY FINDINGS: MANAGEMENT/OPERATIONS

1. There are concerns about **deferred maintenance issues**, especially on trails and in **small neighborhood parks** (playgrounds, basketball courts, hockey rinks).
2. Concerns about maintaining natural resources and **lake water quality**.
3. Recognition needed that **ongoing investments** will be needed to **maintain the quality system developed**.

NEXT STEPS

- » **Attend January 12th Vision Workshop**
 - **Jointly held with System Plan Advisory Committee**
- » **Late Winter/Early Spring - development of system recommendations**