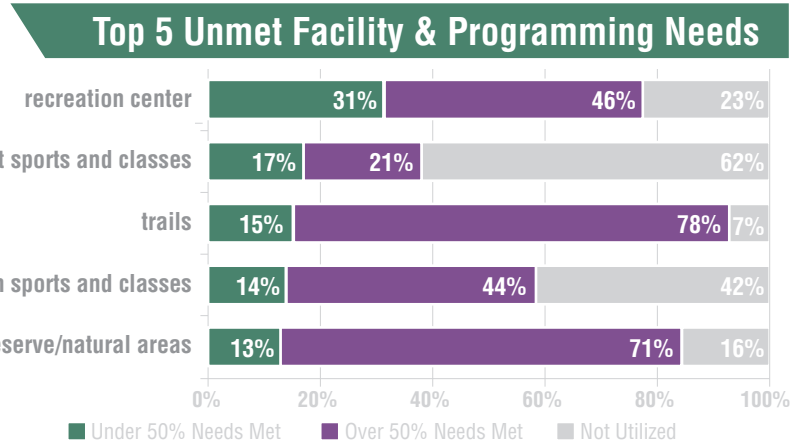
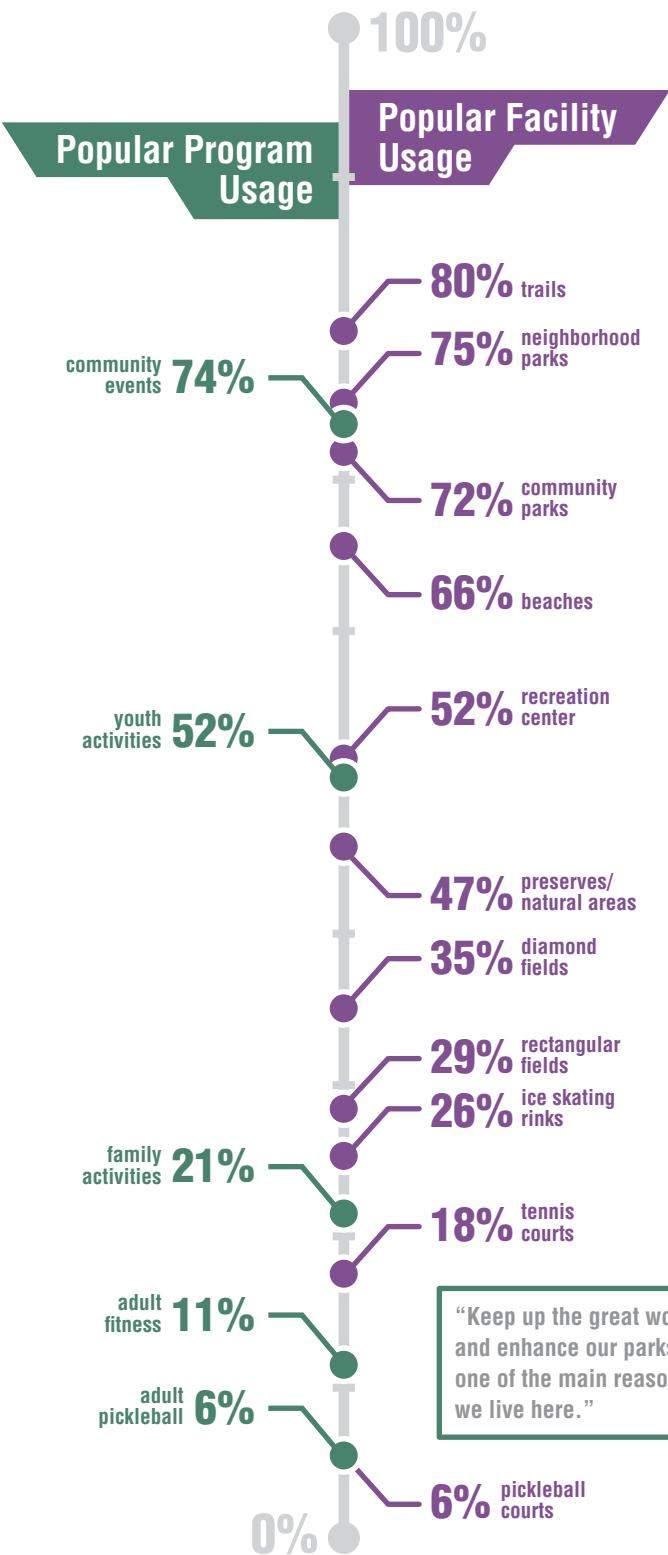
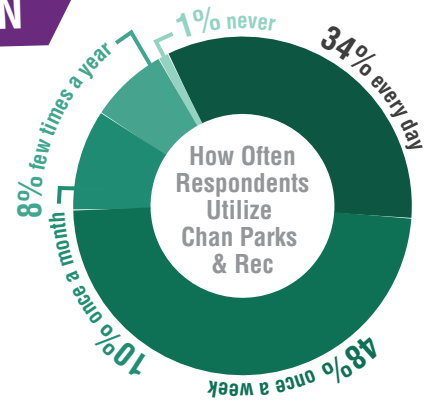




# CHANHASSEN PARKS & RECREATION SYSTEM PLAN

## Online Community Engagement Summary

Four different online engagement strategies were implemented in order to reach as many demographics as possible. Three online questionnaires captured public comments regarding the senior center, the recreation center, and the parks and recreation system in general. The fourth online strategy involved an interactive mapping software intended to collect geographic-based comments. This summary includes a synopsis of some of the significant findings from all four engagement techniques.



### Select General Comments

"We are lacking in facilities to support our population here. A larger sports complex is needed."

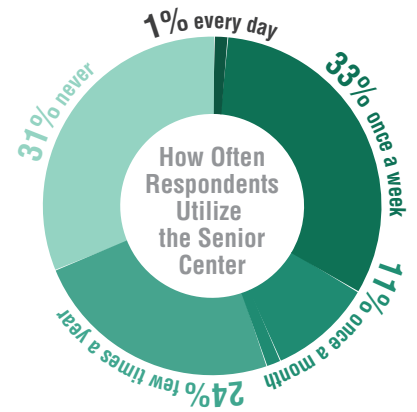
"Keep up the great work and enhance our parks; one of the main reasons we live here."

"Improving our existing rec center would add value and encourage pride in our community. It should be a top priority."

"While private rec facilities should fill the gaps in programming, something like an outdoor swimming pool should be seriously considered as a city run facility. Lifetime is the only option in the city and is not affordable for all."

# SENIOR CENTER

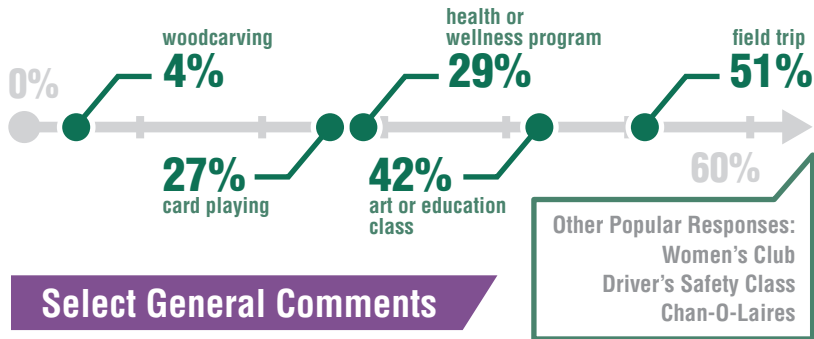
While all responses to the Senior Center survey were evaluated, only those from respondents over the age of 60 were considered for the charts included in this infographic. However, the comments included below are representative of all participating age groups.



**Of Respondents That Never Use the Senior Center:**



## Existing Facility & Programming Usage



## Select General Comments

"I am proud of what the existing Senior Center offers in relation to programming but we will be out growing the facility with the shift in retirees. And we do have a dynamic and hard-working director in Sue!!"

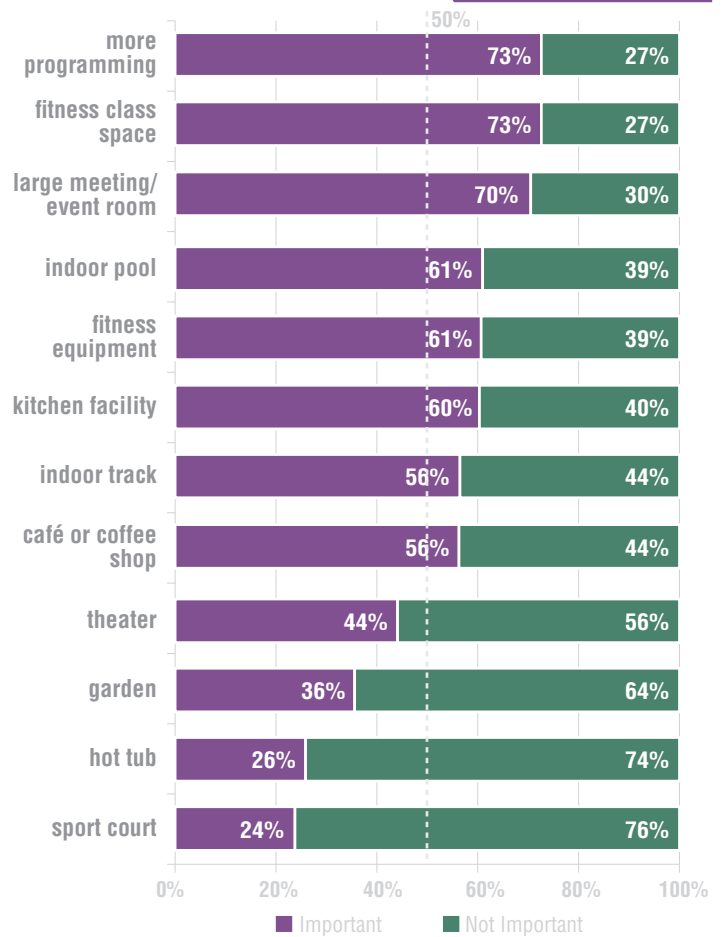
"From what I've seen, there isn't much offered for Senior Citizens that still work full-time. I would like to see some programs offered evenings or weekends."

"The location of the Chanhassen Sr. Center appears to be superb! It is easy to locate, access for pleasure and emergencies if needed. If you are considering a new community center please include the senior's space: Chaska's community center where all ages and all activities can participate is the ultimate (even church studies, meetings, etc.)"

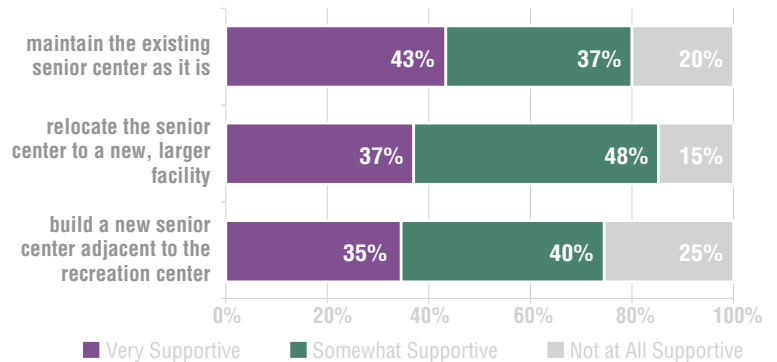
"As the population ages Chanhassen needs a viable senior center. The one we have is very small and does not have enough programs. A theater and art space are very important to me."

"Please keep the bus trips so we can get to places we can't drive to and that have limited parking."

## Importance of Additional Facilities & Programming

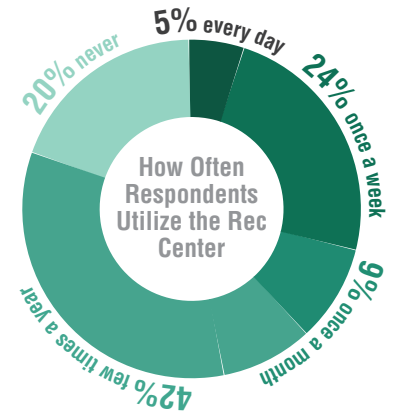


## Support For Senior Center Alternatives



# RECREATION CENTER

This survey was geared toward people who utilize the Recreation Center's facilities and programming, regardless of whether or not they are a resident of Chanhasseen. All of the questions specifically pertain to the Recreation Center rather than the park system as a whole.



## Of Respondents That Never Use the Recreation Center:

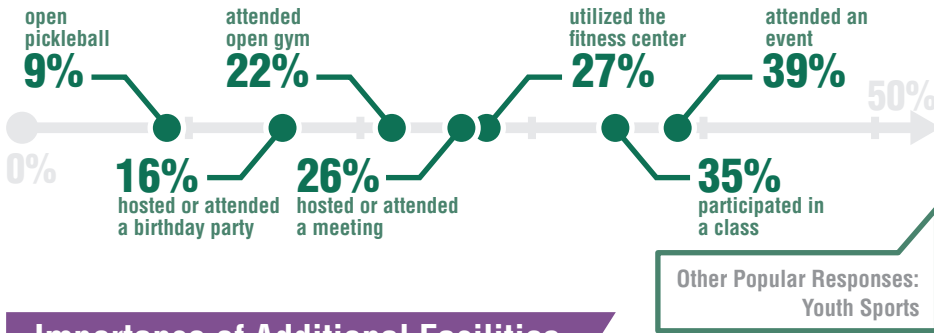
**35%** are not interested in what it has to offer

**18%** use a recreation center in another community

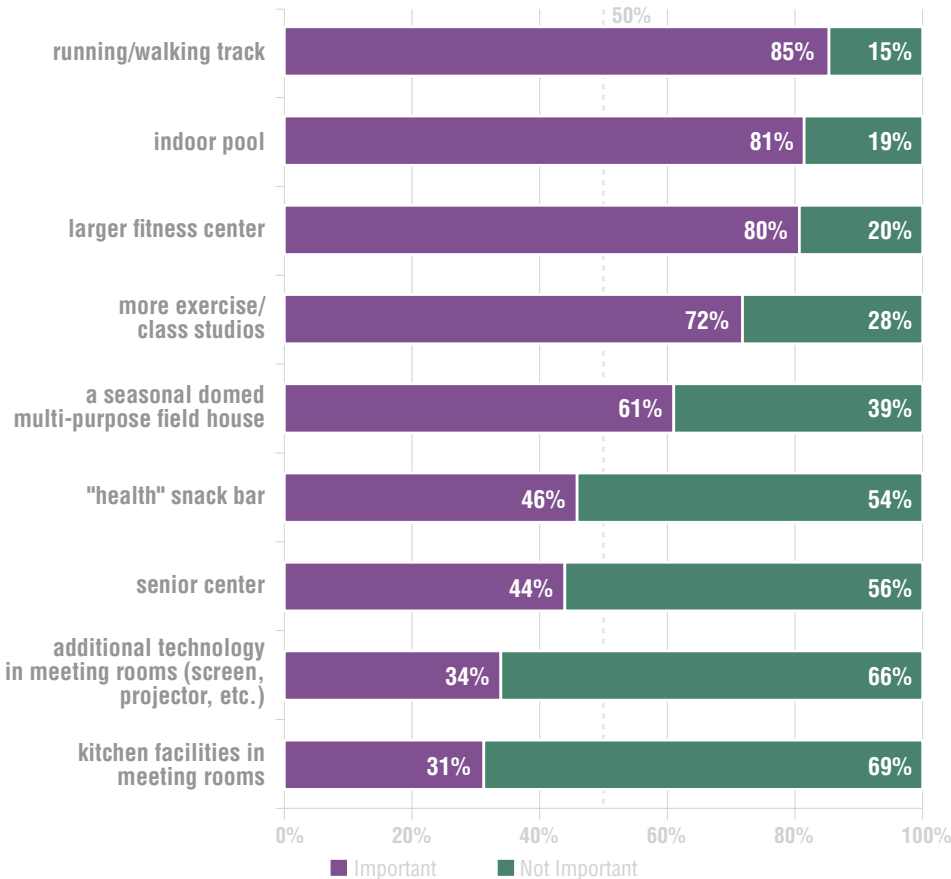
**18%** use private recreation facilities

**13%** are unaware of it

## Existing Facility & Programming Usage



## Importance of Additional Facilities & Programming



## Select General Comments

"I hope it can expand, perhaps by moving to a new building and leaving the full building for an expansion of Bluff Creek."

"We need an economical alternative to the expensive and overly busy Lifetime Fitness. Doesn't need to be fancy but something more like a YMCA or the Chaska Community Center."

"More pickleball courts. As this sport grows, so should the number of courts."

"It is a very nice facility. I exercise there 3 days a week. The staff is friendly and helpful."

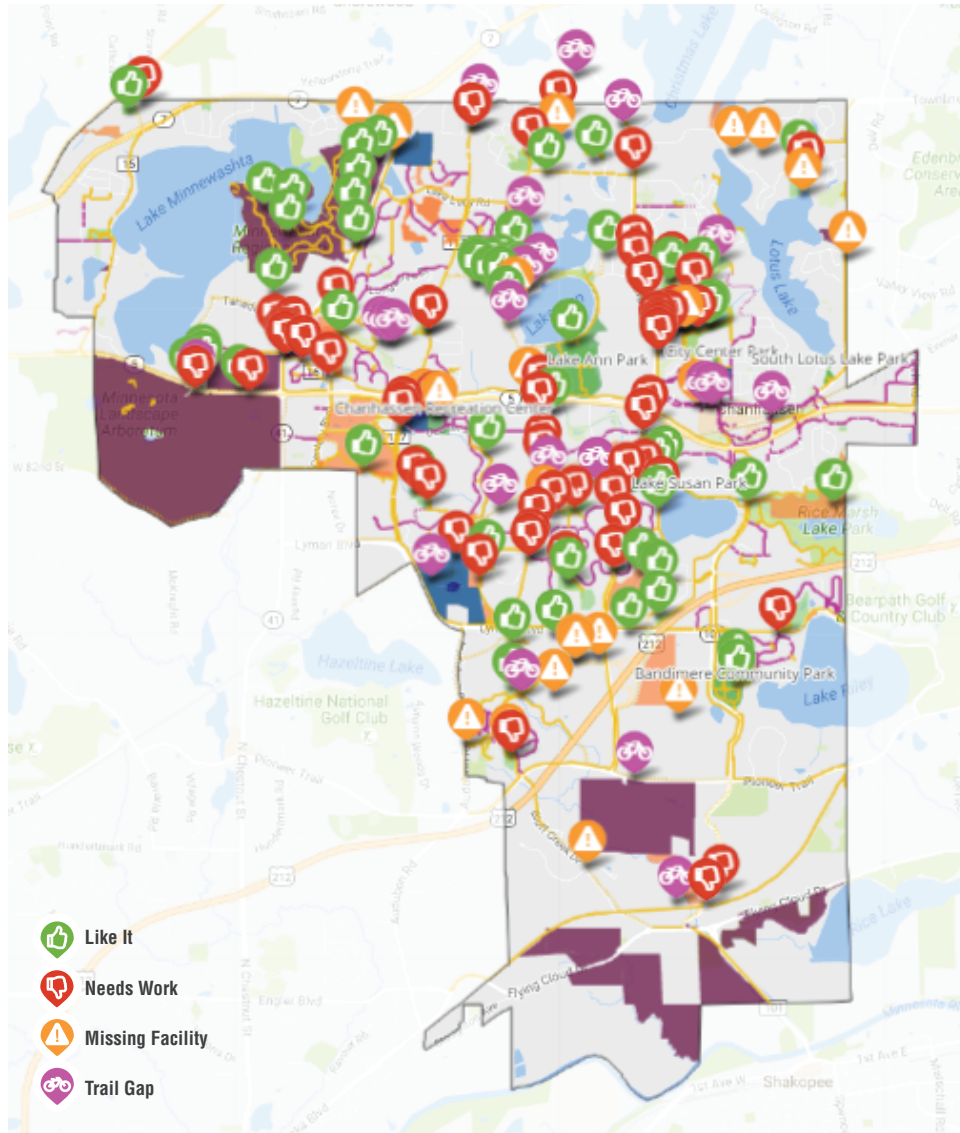
"The rec center needs to fill the needs of all community members. Currently, I feel the programming has a focus on children and families..."

"We would LOVE to go if you had swimming lessons in an indoor pool, and much more creative classes to choose from (art, clay, music, theater...)"

"An indoor public pool and walking track like Chaska Comm. Center....the private clubs are so costly!"

# SOCIAL PINPOINT

Social Pinpoint is an online platform that helps users place geographically-referenced comments in the following categories: “Like it,” “Needs Work,” “Missing Facility,” and “Trail Gap.” This method of engagement received almost 170 responses distributed throughout the City, which can be seen on the map below. A selection of the most popular comments are displayed at the right by category.



**63** identified areas that need work

“The trails around Lake Susan need improvement. Very cracked, pitted, bumpy and uneven. Have seen people trip and fall.”

“The Chanhassen Rec Center is sub-standard compared to other adjacent towns. We could definitely improve it. Aim high, add an indoor skating rink and a pool.”

“Need a safe way to cross Highway 5 at Powers. Underground tunnel?”

**57**

identified areas they like

“I love [the] walking path behind the High School and how we are maintaining the natural area here.”

“We love the proposed trails near Lake Lucy and Lake Ann but do not want any of Prince's land to be developed! Keep land as a preserve!”

“The tunnel under 41 is a great way to get to the Minnewashta trails.”

**23** identified missing facilities

“[Southeast of Bluff Creek Preserve] is another wooded area that would be nice to preserve in its natural state and have public access allowed.”

“More painted/signed crosswalks would be nice on Audubon as there is lots of fast moving traffic.”

“Consider adding a fishing dock accessible from North Lotus Park.”

**22**

identified trail gaps

“The city already has a future trail connection planned from Lake Lucy to Lake Ann Park. Make it happen!”

“Bringing a full loop path around Lake Ann would be a huge advancement in running options for the city.”

“Can Chanhassen and other cities work to get a path all the way from 5 to downtown Excelsior?”

## Key Findings

- 1 The majority of comments across all categories were in reference to the trail system
- 2 While “Like it” contained a high number of responses, many were constructive as well as positive, pointing out missing facilities, trail gaps, and potential opportunities
- 3 Many comments urged the City to maintain Prince’s land as natural, open space, and suggested the only development be hiking or skiing trails
- 4 Tunnels were highlighted as an important amenity for respondents, and many expressed desire for more along Highway 5, especially in closer proximity to the Minnesota Landscape Arboretum