



Appendix B

COMMUNITY ENGAGEMENT

Serving the needs of the community involves engaging citizens and reaching out the community to gain feedback on what's working well and what needs improvement. Two phases of community engagement were performed over this year-long process, both of which involved in person and online forms of obtaining input. The City sought community input by: marketing on Facebook, the City newsletter, and the City's website; press releases to local news outlets; sending direct emails to parks and recreation contacts and local organizations; placing posters in parks and along trails; holding pop up meetings at community events; and word of mouth.

CONTENTS

PHASE 1 COMMUNITY ENGAGEMENT - FALL 2016

Pop Up Meeting Summaries

Stakeholder Meeting Summaries

Online Questionnaire Summaries (full online questionnaire responses are at the end of this document)

Social Pinpoint Summary

PHASE 2 COMMUNITY ENGAGEMENT - SPRING 2017

Open House Summary

Social PinPoint Summary

PHASE 1 ONLINE QUESTIONNAIRES -- ALL RESPONSES

PHASE 1 COMMUNITY ENGAGEMENT - FALL 2016

DATE	TYPE OF ENGAGEMENT	MEETING/ EVENT	LOCATION	WHO FACILITATED	NOTES
9/15/2016	Pop Up Meeting	Men's Softball	Lake Ann Park	Todd Hoffman	
9/21/2016	Pop Up Meeting	Off-leash Dog Area	Lake Minnewashta Park	Jerry Ruegemer; Susan Bill	
9/20/2016	Pop Up Meeting	Lobby	Chanhassen Rec Center	Jerry Ruegemer; Katie Favro	
9/23/2016	Pop Up Meeting	Barnyard Boogie	Chanhassen Rec Center	Rick Echternacht	
9/2/2016-10/15/2016	Display Boards		Chanhassen Rec Center	n/a	
9/28/2016	Pop Up Meeting	Lobby	Chanhassen Library	Adam Beers, Jodi Sarles	
10/1/2016	Pop Up Meeting	CAA Fall Soccer	Chanhassen Rec Center	Jennifer Hougham	
9/3/2016	Pop Up Meeting	Farmers Market	City Center Park	Steve Scharfenberg; Cheryl Ayotte	Most people who attended the farmers market were not from Chan; positive feedback overall
10/10/2016	Stakeholder Group Meeting	Athletic Associations	Chanhassen Senior Center	Jerry Ruegemer; Gabrielle Grinde	
September-October	Marketing	75 posters in parks	Chanhassen parks and trails	Todd Hoffman	
September-October	Marketing	Emails		Todd Hoffman	Sent emails to groups: Minnetonka Skippers Booster Club; Chanhassen High School Storm Chasers Booster Club; Southwest Metro Chamber of Commerce; Buy Chanhassen Rotary Club of Chanhassen; Evening Rotary Club of Chanhassen; Chanhassen Lions Club
10/14/2016	Pop Up Meeting	Football game	Chanhassen High School	Todd Neils	
10/4/2016	Pop Up Meeting	Planning Commission	Chanhassen City Hall	Kate Aanenson	
10/21/2016	Stakeholder Group Meeting	Senior Commission	Chanhassen Senior Center	Jess Vetrano	
September-October	Online	General Chanhassen Questionnaire	Survey Monkey	HKGi	
September-October	Online	Rec Center Questionnaire	Survey Monkey	HKGi	
September-October	Online	Senior Center Questionnaire	Survey Monkey	HKGi	
September-October	Online	Social Pinpoint Map	Social Pinpoint	HKGi	

Pop Up Meeting Summaries

CHANHASSEN PARKS & RECREATION SYSTEM PLAN

Community Input Opportunity



WHAT IS A PARK SYSTEM PLAN?

- » A long-range (10-25 years) vision and guide for parks, recreation, natural areas, and trails
- » Guides City leaders in future decisions about park and recreation investments
- » Includes actions to ensure system meets community needs now and in the future

WHAT DOES THE CHANHASSEN PARKS & RECREATION DEPARTMENT DO?

- » Recommends funding direction and facility development to the Parks Commission, who makes the ultimate decisions
- » 11 full time employees and several seasonal and part-time employees work to provide facilities, maintain parks and trails, and run recreation programs and community-wide events
- » Operates the Chanhassen Recreation Center
- » Builds new parks and trails
- » Maintains natural open space in the community



PROJECT SCHEDULE

This year-long process includes two sessions of community engagement; one in Fall of 2016 and one in Spring of 2017



WE WANT TO HEAR FROM YOU!

- » What do you value about Chanhassen parks, trails, and recreation?

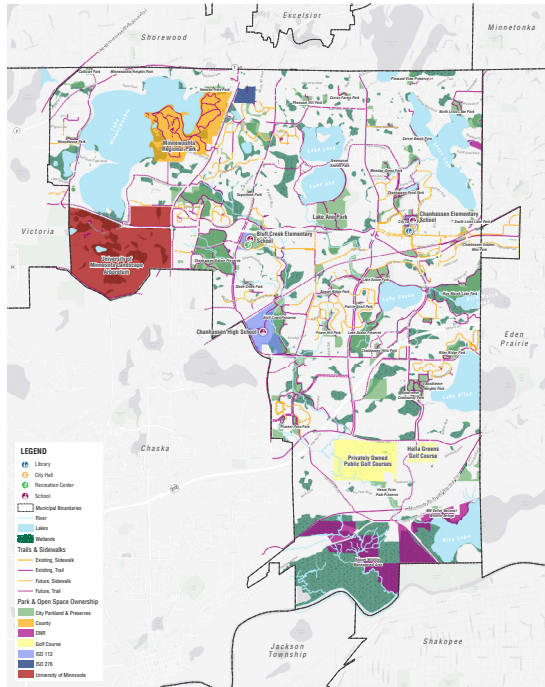
- » What are new recreation trends that the City should focus on for new facilities and programs?

- » What do you think is the top priority for Chanhassen parks and recreation?



EXISTING PARK SYSTEM

Feel free to mark up the map to identify any issues or opportunities you would like addressed in the park system



EVENT	DATE	VOLUNTEER NAME(S)	LOCATION	ESTIMATED # OF PARTICIPANTS

Pop Up Meetings

- » Farmers Market, Sept. 3, 2016
- » Chanhassen Rec Center – Pickleball Courts, Sept. 12, 2016
- » Chanhassen Rec Center Lobby, Sept. 20, 2016
- » Lake Minnewashta Dog Park, Sept. 21, 2016
- » Chanhassen Library, Sept. 28, 2016
- » Chanhassen Rec Center – Barnyard Boogie, Sept. 23, 2016
- » Chanhassen Rec Center – Lobby, Sept.-Oct., 2016
- » Planning Commission Meeting – October 4, 2016

What do you value about Chanhassen parks, trails, and recreation?

- » Nice parks and trails
- » Pickleball courts are great
- » Community events
- » Music in the park
- » Dog park is a good value and well maintained
- » Ped bridge over Hwy 7
- » Proximity to homes

What are new recreation trends that the city should focus on for new facilities and programs?

- » More pickleball courts, and indoor pickleball courts
- » Trail connections – regional trails
- » Outdoor pool
- » Splash pad
- » Ice arena
- » New community center
- » Tai Chi
- » Healthy options in vending machines
- » Senior activities/recreation – group fitness classes
- » Therapy pools
- » track
- » Natural surface trails
- » Community kitchens for cooking classes
- » Public/private partnerships
- » Destinations – restaurants/cafes/beer gardens
- » Amphitheater
- » Conservation areas and interpretation

What do you think is the top priority for Chanhassen parks and recreation?

- » Pool/splash pad
- » Indoor walking track
- » Expand the Recreation Center; Nice community center (like Eden Prairie)
- » Indoor hockey rink
- » Restrooms at Lake Ann Park
- » Weed control in lakes
- » Athletic field lighting
- » Pickleball courts
- » Meeting needs of seniors
- » Keep up with trends
- » Buy Prince's land for park
- » Natural space preservation
- » Connectivity
- » Wifi in parks
- » Art center
- » Dog park priorities – fix drainage issues, add waste bins

What is the #1 public recreation amenity you think is missing from Chanhassen?

- » Splashpad/Pool
- » Platform tennis
- » More gym space
- » Pickleball court improvements – indoor courts, wind screens on outdoor courts
- » Better community center with more gyms and pool (partner with YMCA)
- » Indoor/outdoor pool
- » Indoor park
- » Indoor hockey rink
- » Improved play equipment
- » More evening activities
- » Amphitheater / Bandshell
- » Restaurant / beer garden destination
- » Trail support amenities are needed – trailhead, trail connections, interpretive information
- » Protection of high value areas – natural areas, views, etc.

Stakeholder Meeting Summaries

Athletic Associations Meeting

October 10, 2016

- » General appreciation for City of Chanhassen high level of maintenance of fields
- » Improvements needed at Lake Ann Park for tournaments
 - » Permanent restrooms
 - » More parking
- » Interest in following through on the recommendations listed in the Athletic Facilities Study
 - » o More soccer fields
 - » o Lights at Bandimere Park
- » Participation in soccer is growing, baseball/softball participation is growing at the age 5-8 level

Senior Commission Meeting

October 21, 2016

- » Appreciation for trails and trail plowing in winter
- » High interest in trails and trail maintenance
 - » Fix tripping hazards and downed trees
 - » More grade separated crossings are desired (i.e. tunnel close to arboretum entrance)
 - » More benches along trails
 - » Wayfinding signage-distances, destinations, loops, slopes, city contact info.
 - » Trail gap between Bluff Creek Drive and Flying Cloud
 - » Provide online maps
 - » Hwy 5 is a major barrier
- » Desire for indoor fitness facilities
 - » Walking track
- » Desire for better/safer ADA accessible parking and building connections at Senior Center and Rec Center
- » Maintain and expand bird habitat
- » Concerns about water quality issues stemming from turf lawn pesticides and herbicides
- » Appreciation for current Senior Center programming and location – few improvements needed at existing location

Online Questionnaire Summaries

General Parks and Recreation System Questionnaire*

Recreation Center Questionnaire*

Senior Center Questionnaire*

Social Pinpoint

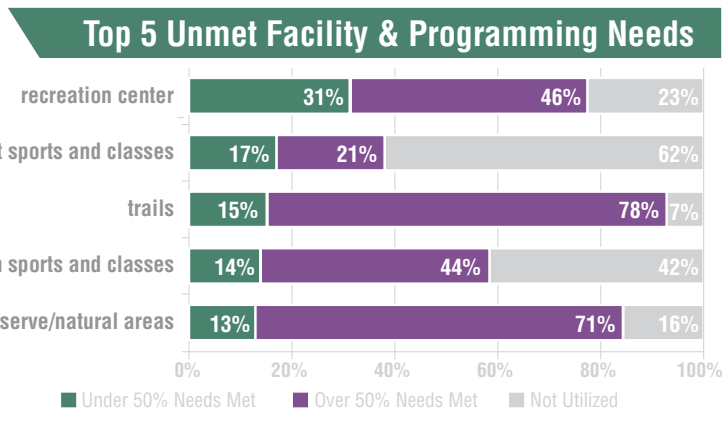
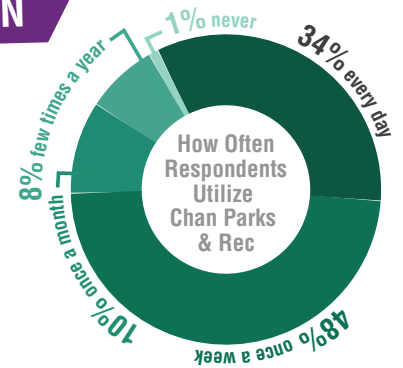
The list of all responses to the online questionnaires are at the end of this document.



CHANHASSEN PARKS & RECREATION SYSTEM PLAN

Online Community Engagement Summary

Four different online engagement strategies were implemented in order to reach as many demographics as possible. Three online questionnaires captured public comments regarding the senior center, the recreation center, and the parks and recreation system in general. The fourth online strategy involved an interactive mapping software intended to collect geographic-based comments. This summary includes a synopsis of some of the significant findings from all four engagement techniques.



Select General Comments

"We are lacking in facilities to support our population here. A larger sports complex is needed."

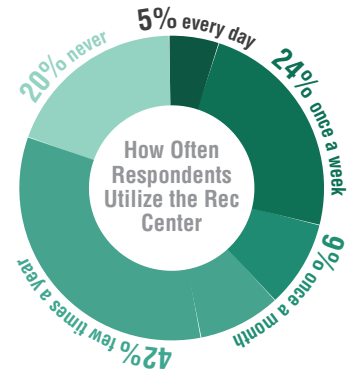
"Keep up the great work and enhance our parks; one of the main reasons we live here."

"Improving our existing rec center would add value and encourage pride in our community. It should be a top priority."

"While private rec facilities should fill the gaps in programming, something like an outdoor swimming pool should be seriously considered as a city run facility. Lifetime is the only option in the city and is not affordable for all."

RECREATION CENTER

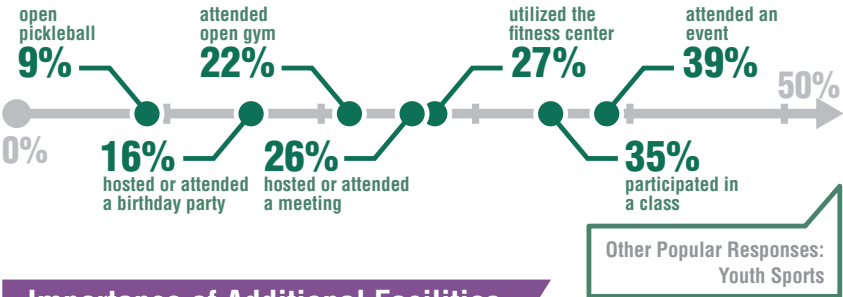
This survey was geared toward people who utilize the Recreation Center's facilities and programming, regardless of whether or not they are a resident of Chanhassen. All of the questions specifically pertain to the Recreation Center rather than the park system as a whole.



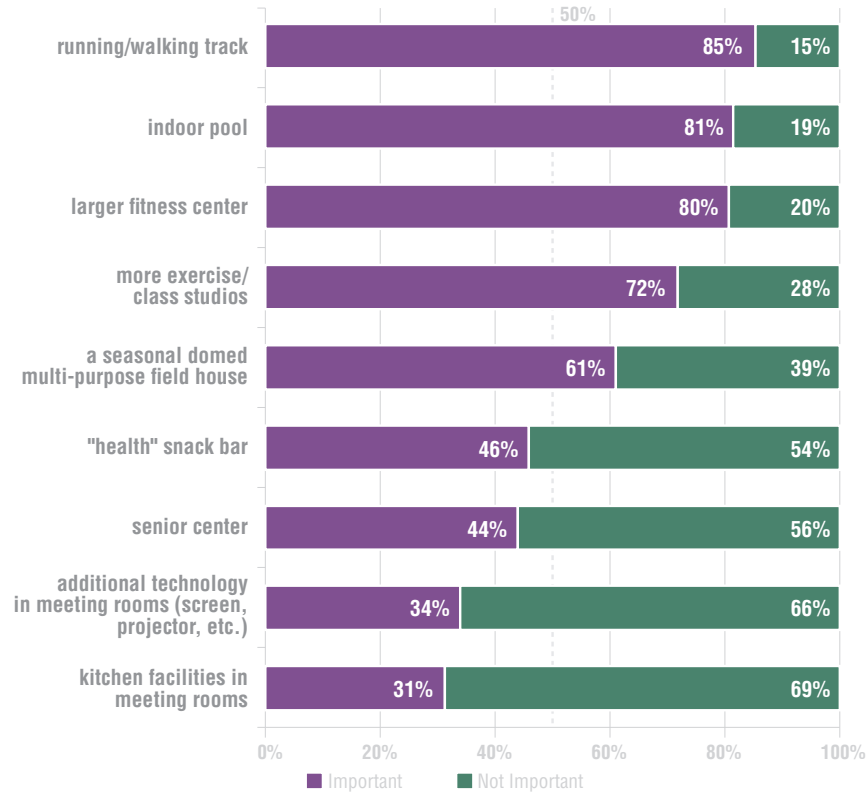
Of Respondents That Never Use the Recreation Center:



Existing Facility & Programming Usage



Importance of Additional Facilities & Programming

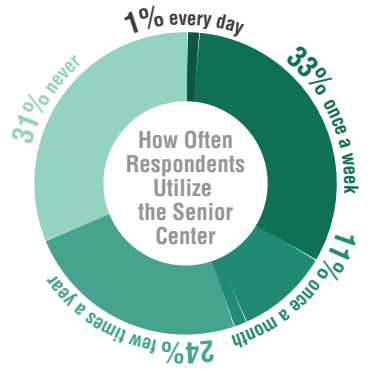


Select General Comments

- "I hope it can expand, perhaps by moving to a new building and leaving the full building for an expansion of Bluff Creek."
- "We need an economical alternative to the expensive and overly busy Lifetime Fitness. Doesn't need to be fancy but something more like a YMCA or the Chaska Community Center."
- "More pickleball courts. As this sport grows, so should the number of courts."
- "It is a very nice facility. I exercise there 3 days a week. The staff is friendly and helpful."
- "The rec center needs to fill the needs of all community members. Currently, I feel the programming has a focus on children and families..."
- "We would LOVE to go if you had swimming lessons in an indoor pool, and much more creative classes to choose from (art, clay, music, theater...)"
- "An indoor public pool and walking track like Chaska Comm. Center...the private clubs are so costly!"

SENIOR CENTER

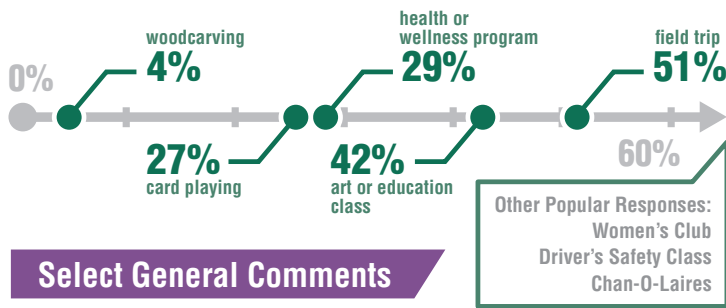
While all responses to the Senior Center survey were evaluated, only those from respondents over the age of 60 were considered for the charts included in this infographic. However, the comments included below are representative of all participating age groups.



Of Respondents That Never Use the Senior Center:



Existing Facility & Programming Usage



Select General Comments

"I am proud of what the existing Senior Center offers in relation to programming but we will be out growing the facility with the shift in retirees. And we do have a dynamic and hard-working director in Sue!!"

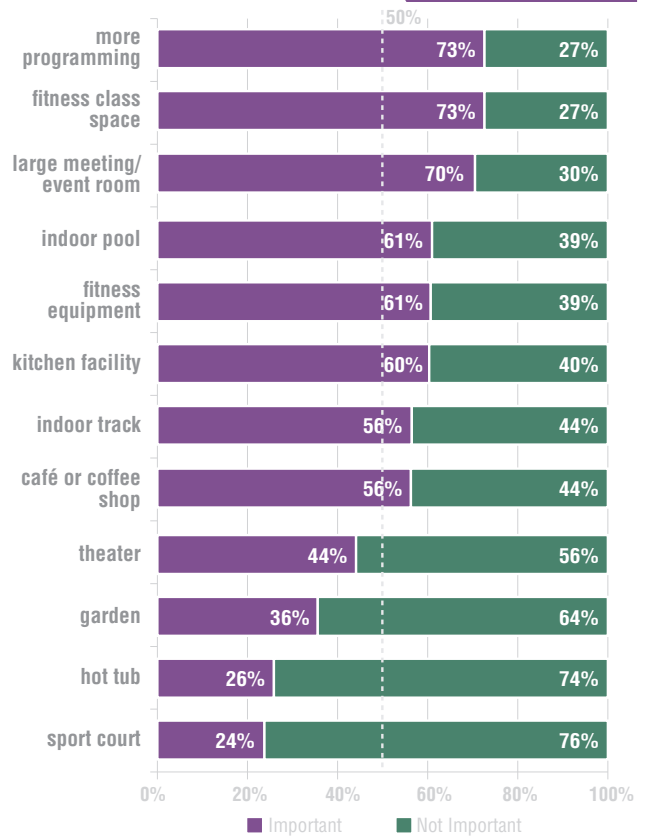
"From what I've seen, there isn't much offered for Senior Citizens that still work full-time. I would like to see some programs offered evenings or weekends."

"The location of the Chanhassen Sr. Center appears to be superb! It is easy to locate, access for pleasure and emergencies if needed. If you are considering a new community center please include the senior's space: Chaska's community center where all ages and all activities can participate is the ultimate (even church studies, meetings, etc.)"

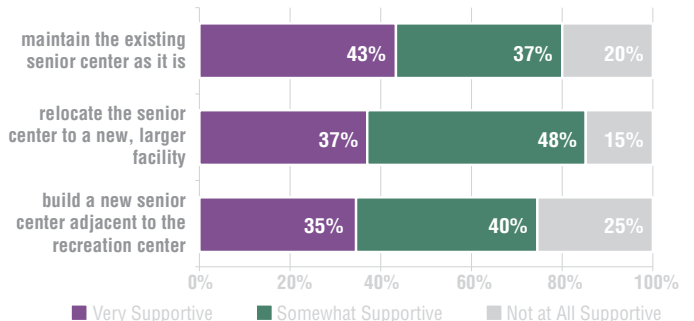
"As the population ages Chanhassen needs a viable senior center. The one we have is very small and does not have enough programs. A theater and art space are very important to me."

"Please keep the bus trips so we can get to places we can't drive to and that have limited parking."

Importance of Additional Facilities & Programming

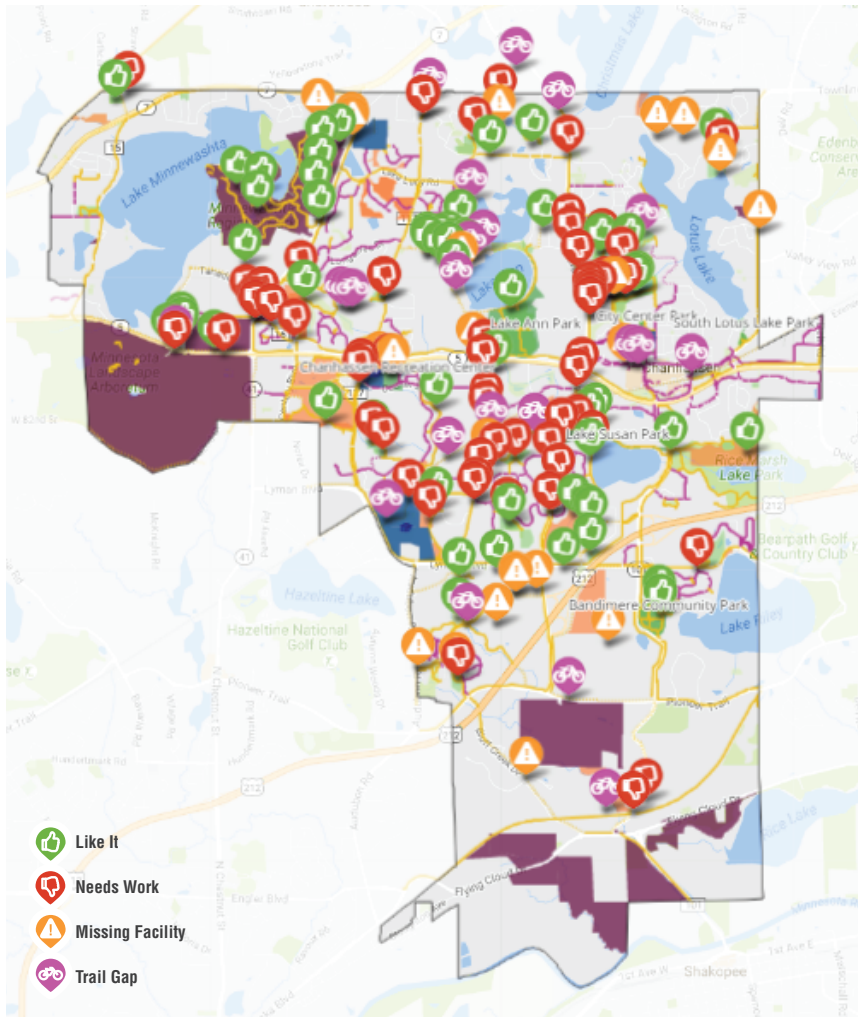


Support For Senior Center Alternatives



SOCIAL PINPOINT

Social Pinpoint is an online platform that helps users place geographically-referenced comments in the following categories: “Like it,” “Needs Work,” “Missing Facility,” and “Trail Gap.” This method of engagement received almost 170 responses distributed throughout the City, which can be seen on the map below. A selection of the most popular comments are displayed at the right by category.



Key Findings

- 1 The majority of comments across all categories were in reference to the trail system
- 2 While “Like it” contained a high number of responses, many were constructive as well as positive, pointing out missing facilities, trail gaps, and potential opportunities
- 3 Many comments urged the City to maintain land around Lake Ann as natural, open space, and suggested the only development be hiking or skiing trails
- 4 Tunnels were highlighted as an important amenity for respondents, and many expressed desire for more along Highway 5, especially in closer proximity to the Minnesota Landscape Arboretum

63 identified areas that need work

“The trails around Lake Susan need improvement. Very cracked, pitted, bumpy and uneven. Have seen people trip and fall.”

“The Chanhassen Rec Center is sub-standard compared to other adjacent towns. We could definitely improve it. Aim high, add an indoor skating rink and a pool.”

“Need a safe way to cross Highway 5 at Powers. Underground tunnel?”

57

identified areas they like

“I love [the] walking path behind the High School and how we are maintaining the natural area here.”

“We love the proposed trails near Lake Lucy and Lake Ann but do not want any of Prince’s land to be developed! Keep land as a preserve!”

“The tunnel under 41 is a great way to get to the Minnewashta trails.”

23 identified missing facilities

“[Southeast of Bluff Creek Preserve] is another wooded area that would be nice to preserve in its natural state and have public access allowed.”

“More painted/signed crosswalks would be nice on Audubon as there is lots of fast moving traffic.”

“Consider adding a fishing dock accessible from North Lotus Park.”

22

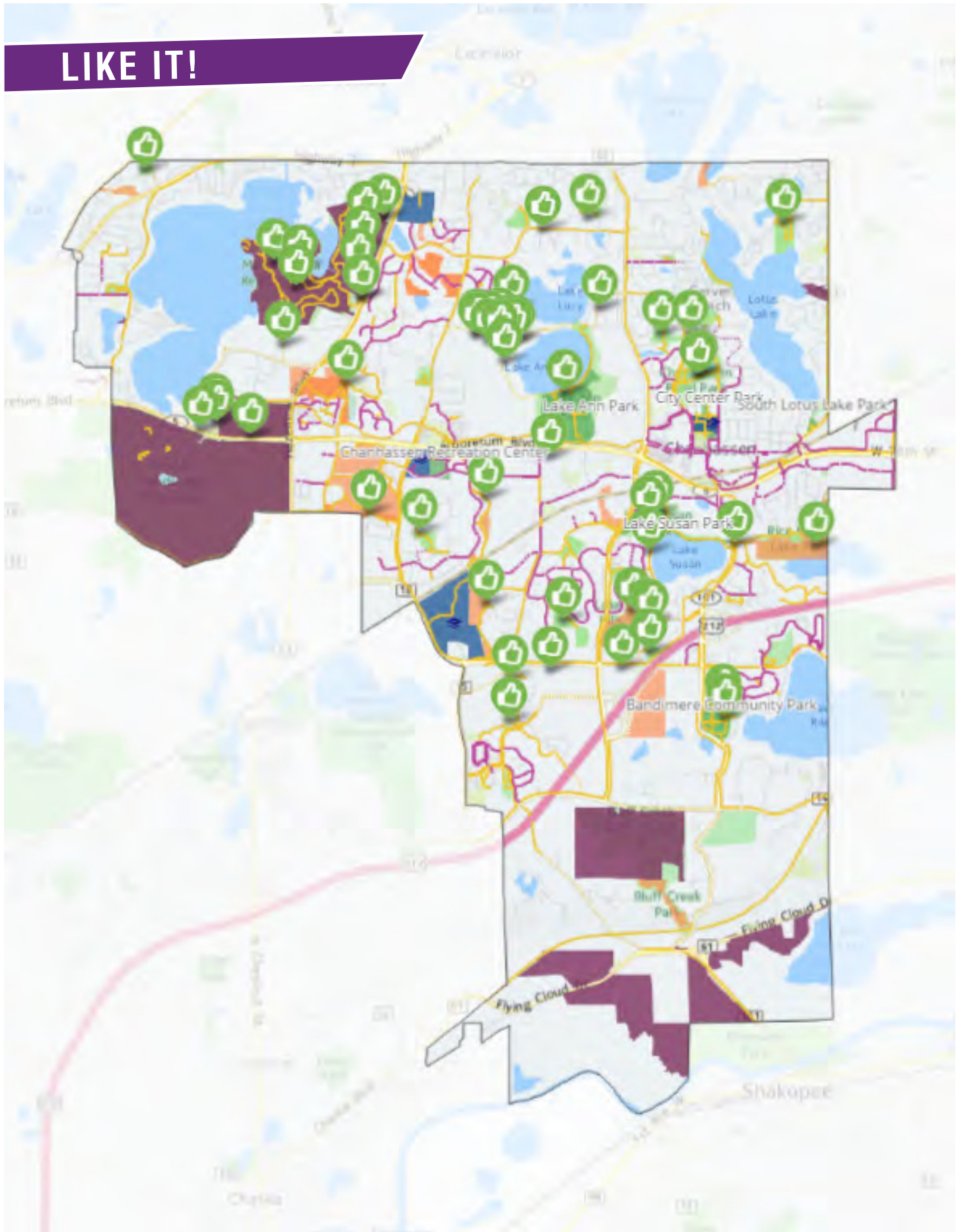
identified trail gaps

“The city already has a future trail connection planned from Lake Lucy to Lake Ann Park. Make it happen!”

“Bringing a full loop path around Lake Ann would be a huge advancement in running options for the city.”

“Can Chanhassen and other cities work to get a path all the way from 5 to downtown Excelsior?”

LIKE IT!



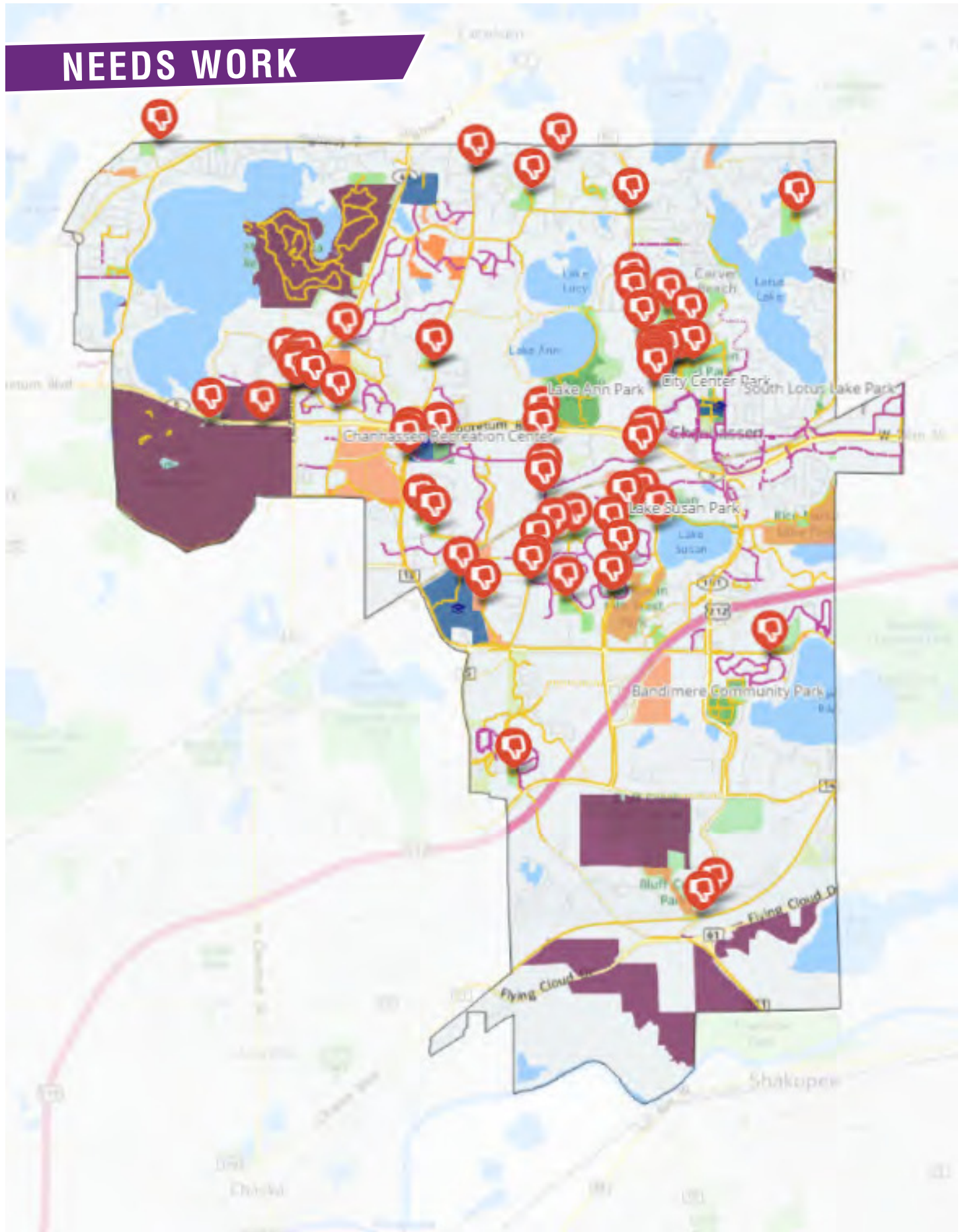
LIKE IT!

- » Bringing a full loop path around Lake Ann would be a huge advancement in running options for the city. Especially if the path was maintained throughout the winter (snow removal).
- » We love the proposed trails near Lake Lucy and Lake Ann but do not want any of Prince's land to be developed! Keep land as a preserve!
- » Love having trails around Lake Ann and Lake Lucy! Turn all Prince's land into Preserves or parks and create an area like Hyland in Bloomington with cross country ski trails and walking/biking trails.
- » Bringing a full loop path around Lake Ann would be a huge advancement in running options for the city. Especially if the path was maintained throughout the winter (snow removal).
- » Agree with many comments that this area should remain a wonderful fresh of breath air, minimal development, but all-season trails would be great, biking, hiking, x-country ski, maybe even equine?
- » It's away from residential areas and connects Powers to other neighborhoods
- » Don't develop Prince's land!!! Trails would be great but we don't want more houses or buildings!
- » Do something special with Prince's land. Don't just shove a bunch of McMansions on it. Lake Ann is something special and it's vital to keep it that way.
- » I love that we have many nature walks like this one through the woods and around the preserve.
- » I love this walking path behind the High School and how we are maintaining the natural area here.
- » There is a park that is known for the face it attracts, Paisley Park is in my purple heart. I urge Chanhassen citizens to always take good care of it in a respectful way. The way Prince would have wanted
- » I'd like a safe way to cross Powers from the Saddlebrook neighborhood towards the north end of Lake Ann
- » The tunnel under 41 is a great way to get to the Minnewashta trails.
- » "Love this tunnel! Well lit and always well maintained, free of debris. Please light the tunnel under Powers Blvd by Power's Ridge Condominiums! Thanks!"
- » Love the snow hill! Warming house?
- » Rice Marsh Preserve is just a wonderful place for a bike ride or a walk. There are a handful of parks, Plenty of wildlife and it is well maintained.
- » We enjoy the very wide sidewalks not only here, but throughout the city.
- » Connecting East of 41 to the West with a path would be a great enhancement for running and bicycling options (especially considering the Arboretum)
- » Yes! Please make the Arboretum more accessible via bike trail!!! That's a fantastic idea. HWY 5 between 41 and Minnewashta PKWY is way too dangerous to justify riding a bike on it.
- » Nice quiet secluded place for a walk. Kind of like that there is no paved path, it is a little retreat near the city.
- » yay! coming soon I hope!!
- » thank you!!! Let's get this connected to the Arboretum... tunnel??
- » Beautiful area!
- » Beautiful, fun park for all ages!
- » Keep this area free of developers. Natural setting of Lake Ann is wonderful!
- » Love the beach area!
- » We just generally love this trail. It's a wonderful part of our wonderful city.
- » I feel that Prince's land should be well thought out. It is a great parcel with a wonderful location. I am in support of low density housing with a substantial portion set aside for park space.
- » Could the hockey enclosure be a dog park during the off season?
- » A trail straight through from Minnewashta would be a good addition. It's doesn't even need to be paved if you want to keep it "natural"
- » Love the idea of planned trails through this neighborhood. Only recourse right now is to walk in the streets.
- » We visit this park daily, year round. Great little sledding hill, nice playground, good walking loop.
- » Great neighborhood park with a nice playground, walking trail, hockey rink, baseball field, soccer field, and picnic shelter.
- » The Bluff Creek trail is a nice option for running, I wish there were more like it to connect to in order to make longer looped routes off of sidewalks / near roads.
- » This is a great dog park, a nice, large area to walk around in the woods and a great opportunity to let our dogs run and socialize.
- » Like the Minnewashta trail, great for biking or walking. Park is also very nice, we enjoy the open spaces, lake, beach, fishing, and boat access.
- » This would be beautiful. Love it.
- » I love the little kids area of Lake Susan Park. We need this in more parks around town.
- » I love the little kids area of the playground at Lake Susan. We need more like that around town.
- » Thank you for this amazing path!!

LIKE IT!

- » Love this path!!!
- » Love Lake Susan trails
- » Love that this park has the option for so many sports (bb ball, baseball, tennis, soccer, etc.). Volleyball court would be a nice addition. The playground is nice too. Enjoy the wide open space.
- » Love the trails in this part of Chan. Wide, gentle, and in good shape. Often ride the trails with my kids. Thanks!
- » Great park with a variety of options! Like the frisbee golf course.
- » Love walking along Kerber Pond Park. Quiet and natural setting.
- » The tunnel under the highway for the running/biking path into the park is amazing! It's so nice to have access to that without dealing with the highway!
- » I love Minnewashta park, it is so beautiful and well-maintained with great walking paths, beach access, and play areas. I like how you can rent picnic areas to use for gatherings as well.
- » I am the person who put the initial thumbs down comment on here and I wanted to report back that already yesterday the city had workers fixing the bridge, nice work!
- » The Dog Park is such an asset. I love it and so does my dog!
- » I'm glad you will be putting a trail through here to connect with the path on the other side of the pond. I would like a path going all around this green space in addition to the planned path.
- » Nice park, well maintained. I would like to see expansion of disc golf if possible.
- » Great little well-maintained neighborhood park. We love the new Pavillion.
- » I agree, please install sidewalks/trails within the Chanhassen Hills Neighborhood. Wayfinding signs would be a bonus!
- » love the open space, the woods, trails. that it is so accessible. also love the nice beach and good parking.
- » awesome area, thank you!
- » Love the dog park at Minnewashta! Big open place to play and exercise with our furry friends!

NEEDS WORK



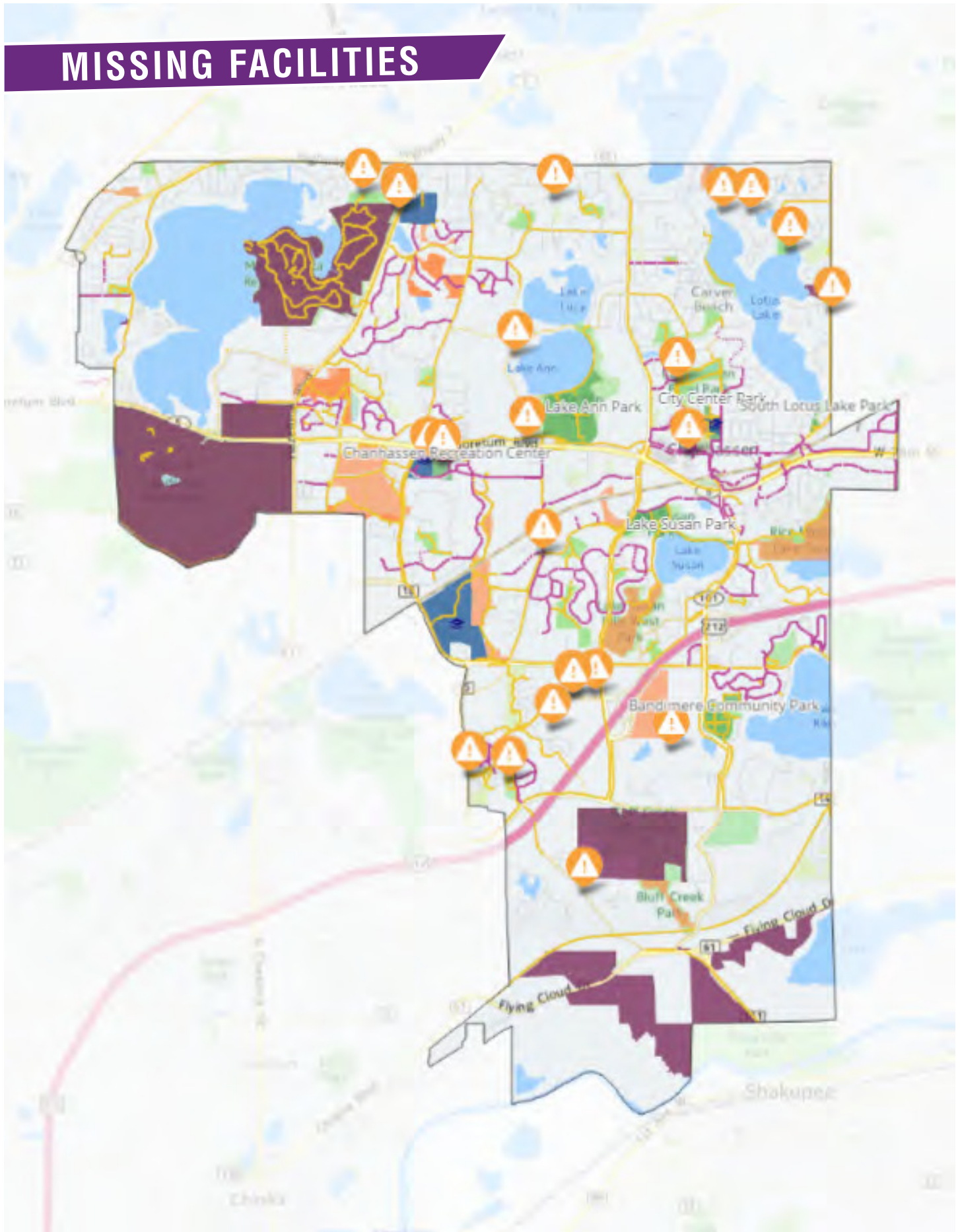
NEEDS WORK

- » The trails around Lake Susan need improvement. Very cracked, pitted, bumpy and uneven. Have seen people trip and fall. Rollerblading is very difficult and unsafe due to conditions.
- » The Chanhassen Rec Center is sub-standard compared to other adjacent towns. We could definitely improve it. Aim high, add an indoor skating rink and a pool.
- » Need a safe way to cross Highway 5 at Powers. Underground tunnel?
- » The lights in this tunnel do not work! Please keep these lights on 24/7 like the tunnel under 101 by Lake Susan apartments. Urgent issue here. Need lights on so residents can use at night. URGENT!
- » Crossing Powers @ Lake Lucy Rd is difficult -- I don't recall if a crosswalk is marked, and if it is it seems ignored by cars.
- » The speed limit on Audubon needs to be reduced. 45 is too fast along this road, lots of cars go considerably faster. If it can't be lowered, at least enforce the limit. Maybe add a flashing speed sign
- » Get the Regional Trail fixed! This section has been closed for years. The trail access parking lot is pretty much useless if you can't go east more than a half mile.
- » Bring back our crosswalks! No crosswalks over Powers Blvd from the tunnel (which is usually filled with water, mud, or ice and the lights never work) to Lyman. Almost a mile distance.
- » Stoplight is badly needed at W 78th and Hwy 41. Traffic has dramatically increased over the past several years. Crossing the street is difficult and dangerous.
- » Please, please, please put a cross walk, stoplight or tunnel at the W 78th street and hwy 41 intersection. It is nearly impossible to cross when running, biking or walking our dog. Thank you!
- » Cross walks used to be here. This is an active community with lots of walkers and lake susan is a circle which is used alot for walkers, etc. It's dangerous not to have crosswalks.
- » This is my favorite area to run that is near our home, but since I usually run with my dog it would be wonderful to have more trash cans in along the path both north and south of Lyman.
- » It is extremely scary to cross Galpin to get to the park with the amount of traffic. Not many people fully stop for the stop sign unless they really see a pedestrian. Crosswalks need paint at least.
- » This pond smells awful.
- » More lighting along Powers for late night/early morning walkers and runners. It is very dark
- » 50mph speed limit is too high for Powers.
- » We need a wider shoulder or bike lane to allow pedestrians and bikers to use Highway 5 from 41 to Minnewashta Parkway
- » Sidewalk is very exposed and vulnerable to northbound traffic. Can we have a railing (similar to what exists just south of here so we can have a barrier between walkers and traffic?)
- » "1- beautiful location, but old, dated equipment and would love to have rubber floor instead of gravel
2- would benefit from additional trees surrounding the park
3- basketball court is cracking"
- » Would love to see a way to control/slow traffic on Yosemite/ Apple Road, especially as this area continues to develop. It would also be great to Excelsior to northern Chanhassen via walk/bike trail
- » Needs new equipment, new floor, rubber mat instead of pebbles, and improved drainage. The grass is usually soaked and huge puddles of standing water days after rainfall.
- » The bridge crossing the creek between the Oaks and Stone Creek Park needs to be fixed, it's tilted and I'm not sure it is entirely safe as is.
- » Needs a lower speed limit on Powers & guard rails for the path. May people drive on the shoulder when someone is waiting to turn into Utica Lane - this is EXTREMELY dangerous.
- » It would be really nice if you didn't have to cross the street to use this path. How about a sidewalk along the east side of Audubon?
- » Powers is dangerous for pedestrians
- » This part of the trail is often closed and locked, so it's not accessible.
- » Fix the trail please!!
- » A splash pad would be great here - many families in the immediate area
- » Very dangerous for walkers/bikers here. Walkers along Powers traveling from Saddlebrook to Santa Vera are basically walking along the shoulder of the 50 mph street. Please provide buffer/railing.
- » This intersection is very dangerous. Cars are traveling too fast for this street (Powers is 50mph here, cars generally travel 55+). Traffic is stopped to make left hand turns in both directions.
- » This crosswalk needs a flashing crosswalk signal like the one on Powers has. Traffic never stops here and this is a crossing between neighborhoods.
- » Area too dark. Needs better lighting. never safe for pedestrians and bikers; let alone turning cars!

NEEDS WORK

- » area could use a cross walk marked. Sidewalks set to connect north/south sides of one association and this area, where sidewalks meet, is not safe. thank you!
- » Great park but wish it had a rubber floor instead of rocks! My toddler tries to eat them, and big kids throw them.
- » Need a safer way to cross the street. Most people don't stop at the blinking signs
- » Need a flashing crosswalk.
- » The Hwy 41 & w 78th street intersection really needs a stoplight. It's impossible to cross 41 if on 78th street.
- » Love the park but please move garbage cans away from the benches. They are stinky and bugs prevent you from having a rest on the bench. Shaded seating around the playground area would be great.
- » his part of Galpin needs a comprehensive overhaul. Mailboxes on the opposite side from the houses forcing residents to cross a four-lane road to get their mail will result in the death of a resident.
- » WAY too much cut-through traffic on this street. Plus semi traffic too! (took down power lines this summer!) Center island at ends of streets would reduce speed and semi traffic.
- » 30 mph is too fast for this street. Too much cut-through traffic especially at rush times.
- » Bike lane on highway 5 from Minnewashta Parkway to 41
- » At crosswalk, road is wide enough for a car to pass another car stopped waiting to turn west. Dangerous for walkers when 1 car waits for pedestrians, + 2nd car assumes the 1st is turning + doesn't stop
- » Cross walk markings needed across Lyman Blvd at this intersection to connect trail system more visibly and safely for pedestrians as cars approach up a hill on a curve from the east.
- » Archery range is UNSAFE! Please get rid of it. Not worth the risk of injuring or killing a child just a few feet away at the playground!
- » Please lower the speed limit. There is a downhill (blind) curve, right before a walking trail ends. Please try to keep pedestrians (residents and their children) safe.
- » Speed limit is too fast. There is a downhill curve, headed north toward Excelsior, and the trail ends. Please lower the limit to keep our pedestrians (residents and their children) safe.
- » Need to provide a safe way to cross the street during the auto Motorplex cars and coffee. People got 50mpr down the street and no one stops for people crossing.
- » When the city took out the slide on the hill and graded the area, it changed the trajectory of the sledding hill sending kids toward the trees instead out toward the clearing.
- » dark crosswalk area...could use a street light here. most months it is dark here! Thank you!
- » I've been walking across this crosswalk with my daughter and have had cars stop for the stop sign, but then almost hit us in the crosswalk. I think a flashing pedestrian sign is needed.
- » Crosswalk time is not long enough either e-w or n-s. Its a little scary.
- » Need a flashing crosswalk for visitors crossing to PP. Sherriff is now monitoring on museum days--what about non-museum days?
- » The southern part of City Center Park is nice (veterans memorial, concert area), but the northern part behind city hall and school is boring and could use updating
- » Often difficult to make a left-hand turn from westbound Coulter Boulevard onto southbound Galpin. Limited visibility of cars on northbound Galpin and, at times, heavy traffic.
- » "The baseball field at this park needs upkeep. The infield is overgrown with grass. it also needs additional fencing along the dugouts. Batted balls go directly into the walking path directly behind."
- » The sidewalk here was done incorrectly when they re-paved last summer. The grade change is not to ADA code and is very steep. The contractors the city hired should have to come back and fix it.
- » Sidewalk along this section of Powers needs landscape buffer- entire rest of sidewalk has this, but this area does not. Walkers/bikers are exposed to high speed traffic.
- » Dangerous intersection. The cars along Kerber are going too fast for the street. Cars generally do not stop for pedestrians.
- » 62nd street needs better lighting - it's very unsafe to walk to Cathcart Park from surrounding areas
- » The playground equipment at Pheasant Hill park could use improvements. A few of the slides have small holes forming and the equipment is beginning to rust.
- » loose and uneven pavement on the trail
- » This intersection is dangerous for anyone trying to use the path to walk/run or kids to cross with bikes. Please add a crosswalk/stoplight before someone gets hurt!

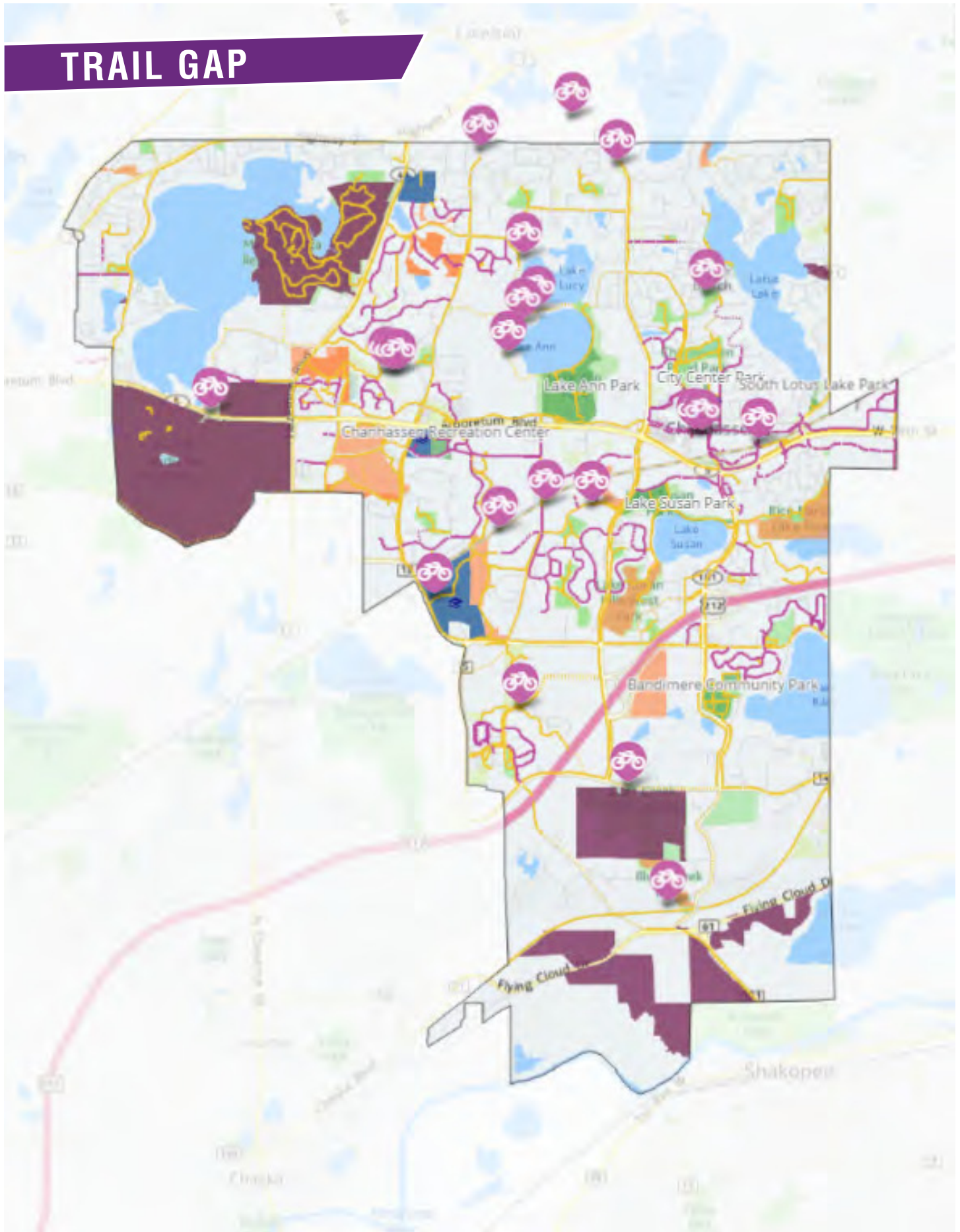
MISSING FACILITIES



MISSING FACILITIES

- » This is another wooded area that would be nice to preserve in its natural state and have public access allowed.
- » Full path all the way around Lake Ann would be a huge benefit to this area and Chanhassen.
- » Solar powered speed signs. Yosemite is a popular cut through from Mill St. to lake Lucy Rd. Living along this road, we along with two other neighbors have witnessed many vehicles traveling too fast.
- » Would be nice to have a bike trail going through 78th Street / downtown Chanhassen. Currently have to either take the street or the sidewalk, neither of which is great for bikers.
- » More painted/signed crosswalks would be nice on Audubon as there is lots of fast moving traffic.
- » It would be nice to have a safe way to get to the river crossing by bicycle (or foot?). This road is not one I prefer to ride given it's width and visibility. The planned trail would be great.
- » Please push this road through! Getting access to the area of Chan behind this is difficult!
- » Very unsafe crossing -cars rarely slow down or stop for pedestrians. Perhaps one of the blinking pedestrian crossing signs and reminders that it's the law to stop for pedestrians in a crosswalk?
- » Perhaps more preserve acreage could be obtained in this area. Adjacent preserve could use some more signage and map display so one can determine where one can legally walk in this wooded area.
- » Add a sidewalk/trail along Pleasantview. It's already too narrow just for vehicles and is worse if there are pedestrians on the road.
- » Consider adding a fishing dock accessible from North Lotus Park.
- » Need a community pool
- » With a number one city, you would think there would be a public pool option. Not everyone can afford Lifetime & not everyone wants to go to a lake.
- » Open this road!!!
- » More trash cans would be nice. I run along this trail and I would pick up more trash along the trail if I didn't have to carry it for miles.
- » the cross walk over hwy 41 near MMW is still not safe - cars don't stop even when the lights are flashing. makes getting to lake minnewashta regional park by bike challenging.
- » Flashing yellow turn light added? The red light doesn't always change to turn into the neighborhood and daily cars go through the red light
- » We need to get that road through. Only one entrance to The Preserve neighborhood is not enough!
- » Traffic police needed during MMW school start and end times! Hazard for vehicles on 41 and entering/existing the school. Children do not feel safe in crosswalks!
- » Speed bumps--pleasant view road a defector trail but is dangerous and speed limits are not observed. Speed bumps would slow vehicle traffic and protect bikes and walkers.
- » Unsafe section of road for bike/pedestrian crossing. Need elevation adjusted to reduce blind spots.
- » Water fountain needed
- » herman field park could use a pavilion, better and more playground equipment, better connection to the regional park trails. overall better use of the open field area. anything to get more people thr

TRAIL GAP



TRAIL GAP

- » So many bikers on Powers from 5 to Excelsior. Can Chanhassen and other cities work to get a path all the way from 5 to downtown Excelsior? I've heard this desire from numerous, numerous people.
- » The city already has a future trail connection planned from Lake Lucy to Lake Ann Park. Make it happen!
- » It would be nice to have safe bicycle and pedestrian access to Excelsior via Northbound Galpin. Clearly a multi-city effort, but anyone in this area now is somewhat landlocked due to the poor options
- » Partner with Hennepin County to connect the existing path in Chanhassen to downtown Excelsior.
- » Any way to make a biking trail around both lakes?
- » Is a full paved circle along Lake Ann going to happen? Would LOVE this idea! Please don't develop this area into private land- keep it public!
- » Complete the trail segment along Highway 5 from Highway 41 west to Arboretum Drive so that pedestrians/cyclists can safely access the Arboretum. Include a safe crossing over Highway 5 (underpass).
- » It would be amazing for the city to invest in the lakeshore property from Princes estate. Let's make Lake Ann world class with a path the whole way around!!!
- » Would be great to have a long trail along the tracks to connect with other regional trails.
- » It would be nice to have a sidewalk/path here separate from the road, especially because it is shown on this map as an existing trail.
- » Would be nice if this trail went all the way to Sunset Ridge Park, to avoid having to cross Lake Drive.
- » What happened to this proposed trail extension? Why was it abandoned? Connecting this gap to the east would be extremely valuable.
- » Paved, safe path needed here
- » Missing sidewalk here. No easy way to get a stroller or bike from 78th into this shopping center.
- » Missing sidewalk on Wells Fargo Bank side of street. No easy way to get from 78th into the shops in this area with strollers or bikes.
- » Missing sidewalk
- » told long ago this area would be connected. This year, a resident posted "private property signs where trail is partially mowed???"
- » Access to the trail to the West would be nice from Galpin if possible to plan while development is occurring in that area.
- » It would be nice to see a pedestrian access to this ravine preserve.
- » Is there anything that can be done on Audubon over the railroad tracks. Riding a bike along there with walkers around is a daunting task. Lighting needs to be better there too bc of sidewalk changes
- » Difficult for bikes to travel from the trail on the road above down to the trail through the tunnel. Have to carry bikes up or down the stairs to complete the transition from one trail to another.
- » Please add a trail that goes all around the pond in this green space, and add an inlet path from the Canterbury Ct cull-de-sac. Thank you.