



Agenda

City of Chanhassen
Parks and Recreation System Plan

Advisory Committee Meeting #2
Thursday, November 10, 2016, 7:00-9:00pm

Meeting Location Senior Center, 7700 Market Boulevard

Meeting Purpose Second Advisory Committee Meeting focused on reviewing Community Engagement Input and System Evaluation and Needs Assessment Findings and reaching consensus on key findings about the status and future needs of the system.

Agenda

1. Introductions
2. Approval of September Meeting Notes
3. Community Engagement Recap
4. System Evaluation and Needs Assessment Findings
5. Consensus on Key Findings
6. Next steps

The focus of the upcoming Advisory Committee meeting will be to review the results of the system evaluation and needs assessment tasks and reach consensus on key findings. In addition to the community engagement occurring over the last few months, the consultant team has conducted a distribution and gap analysis for the system, peer community analysis, and national standard analysis. The intent of these tasks is to build a solid foundation of understanding of the existing system and an identification of the issues and priorities for the master planning process.

Our goal at the end of these tasks is to develop a set of key findings that can describe the state of the system and the needs. These findings are what will be used to develop the Existing Conditions chapter of the System Plan, as well as serve as a foundation for the identification of a system vision. As this is a system plan, the key findings will be more global in scale than a laundry list of specific park or facility needs (*the laundry list will come later in the process*). The general categories we will start with include Parks, Facilities, Trails, Open Spaces, Programming, Arts, and Management and Operations. After reviewing the materials in the packet, please spend some time thinking about key findings for these categories as we will end the meeting with an exercise that is intended to help us reach agreement on a set of key findings that can be shared with the City Council.

The following is an overview of what is included as attachments.

Advisory Committee Notes

We are planning on making the notes from the Advisory Committee Meetings available on the website. Please let us know at the meeting if any corrections are needed from the draft notes included in the packet.

Distribution and Gap Analysis

A distribution and gap analysis was conducted for system components. The distribution analysis looked at where facilities are located to see if certain areas of the city are underserved. The gap analysis also looks for areas that are underserved, but does so by identifying whether there are residential neighborhoods that are not within a ½ mile of neighborhood parks or portions of community parks that provide a neighborhood feature like a playground. Please review the maps and give thought to what you see as service gaps that should be acknowledged and addressed in the planning process. Some initial findings from this analysis include:

- Neighborhood Parks
 - Generally the City has done a good job of ensuring most residential neighborhoods are served by a neighborhood park
 - Largest gap exists south of 212 – particularly when Great Plains Boulevard is considered a barrier
 - Of particular concern are those areas identified for future medium and high density residential
- Community Parks
 - Distributed to serve the core of the city well
 - While a gap, the northwest area is served by Lake Minnewashta Park
 - Gap also to the south between 212 and 101
- Facilities
 - Playgrounds distributed throughout, similar access concerns as neighborhood parks
 - Shelters distributed throughout the City. There is a Neighborhood Park Picnic Shelter Initiative underway that will add 6 more shelters in 2017 and 2018
 - Diamond Fields (baseball/softball) & Rectangular Fields (soccer, football, lacrosse) – primarily located in the core of the city with limited access on the north, west, and south. Rectangular fields are also available at Minnetonka Middle School West, though the fields are not operated by the City.
 - Informal Sports (basketball, open fields, pickleball, sand volleyball, tennis) – basketball distributed throughout, while tennis and sand volleyball more centrally located. Pickleball has relative new set of dedicated courts at the Recreation Center.
 - Summer& Winter Informal Recreation – access is generally related to where opportunities were available

Community Engagement Activities

A variety of community engagement activities were completed since our last meeting. We have included in this packet an overview of each one and some summarized findings. Please review the information and give thought to what we have learned about what is working, what is not working, and what we need to consider during this system planning process.

Pop-Up Meetings

Thank you to everyone who assisted in conducting pop-up meetings throughout the community. These were integral towards increasing awareness of the process and soliciting input that otherwise might not have been possible. A summary of what was heard is included for your review.

Stakeholder Meetings –

The consultant team conducted two stakeholder meetings: one with seniors and one with athletic associations. Notes from the stakeholder sessions have been provided for your review.

Community Surveys

The three on-line surveys conducted included a general community survey (935 respondents), recreation center survey (322 respondents), and senior center survey (120 respondents). The results from the surveys have been compiled into multiple documents. The first pages of the attachment provide summaries of relevant findings from the surveys. These summaries are followed by a summary of the comments on two of the open questions on the general community survey. For those who are interested in reviewing all of the results for each survey, they are available in a draft Appendix at <https://hkgi.sharefile.com/d-s7c475dad61b4657b>.

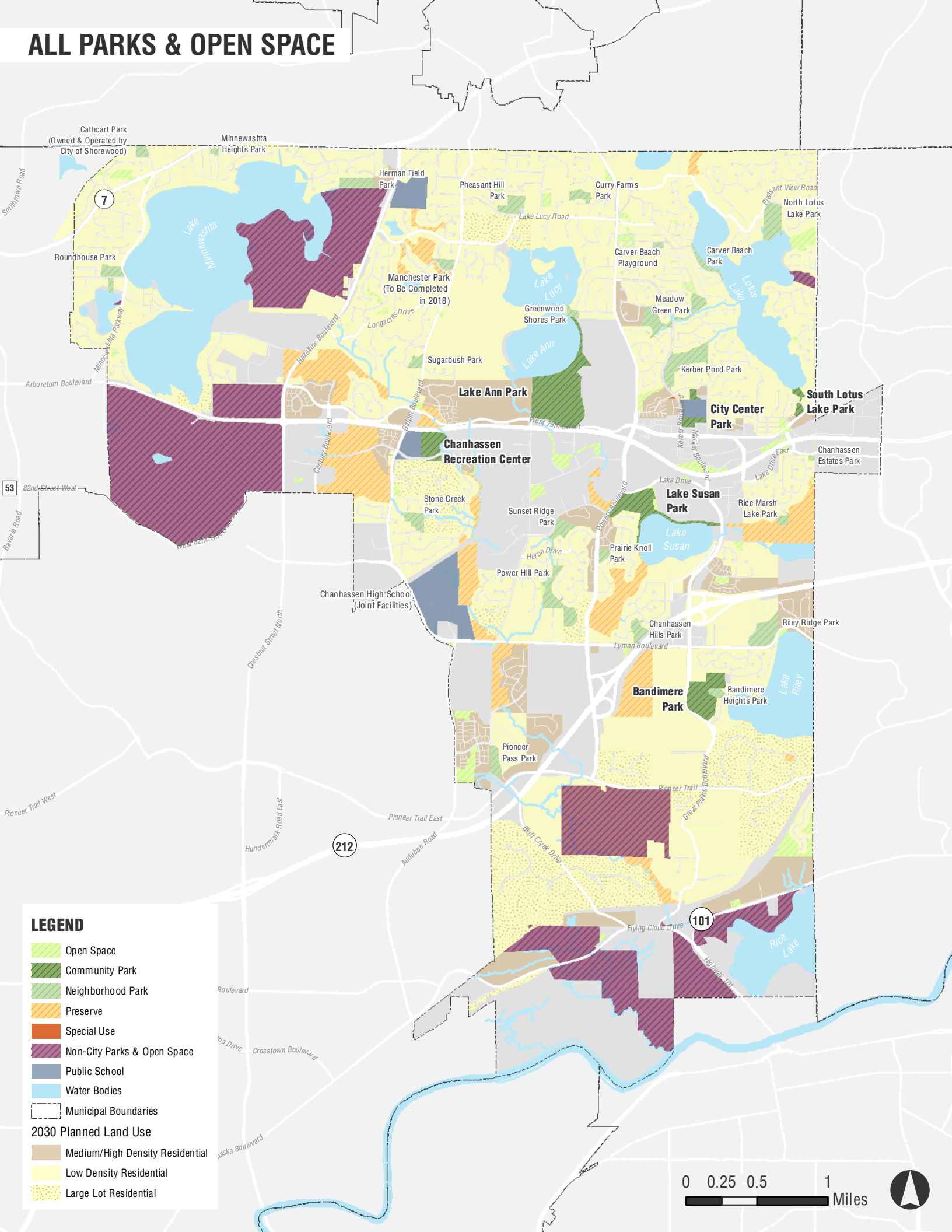
Chanhassen Park System Plan
Advisory Committee Meeting #1
Sept. 8, 2016
Meeting Notes

1. Introductions

2. Community Engagement
 - Potential Groups for pop-up or stakeholder meeting
 - Church groups
 - Multi-unit housing
 - Cultural groups
 - Note that Ryder Cup and start of school is distracting right now
 - Art Wander, started in Waconia, weekend before Ryder Cup, open art studios, Courtney could hand out the postcards at her open studio
 - Friday night football game
 - Athletic associations – stakeholder mtg
 - Chamber of Commerce, business community – stakeholder mtg
 - Pop-up meeting/event calendar- we will email the calendar out to the Advisory Committee to ask for volunteers.
 - Send out PDFs of the postcard to the Advisory Committee to forward—both in the body of the email and as a PDF for people to send out to their email lists

3. Parks and Recreation Trends
 - Cost of maintaining what we have is also important – needs to be considered and included. Are we going to be able to continue? Should we be looking at other alternatives at time – example ag lime trail rather than paved asphalt?
 - Could something like the Minneapolis Parks Foundation be developed in Chanhassen?
 - Pavement management plan – in place but underfunded
 - Environmental considerations - AIS – aquatic invasive species; emerald ash borer – for every dollar spend on parks – spend the same dollar on stormwater management (financed through utility fee)
 - Fun runs – one time events becoming more popular - this demand on community for runs, races, etc. challenging
 - “gimmicky” stuff for youth – e.g. zombie run
 - Struggle with middle school and older youth
 - Need to be sure of what other communities have – maybe Chanhassen doesn’t need to provide everything
 - Archery range – maybe an opportunity to partner

ALL PARKS & OPEN SPACE



Cathcart Park (Owned & Operated by City of Shorewood)

Minnetonka Heights Park

Herman Field Park

Pheasant Hill Park

Curry Farms Park

Roundhouse Park

Manchester Park (To Be Completed in 2018)

Greenwood Shores Park

Sugarbush Park

Lake Ann Park

Chanhasen Recreation Center

Stone Creek Park

Sunset Ridge Park

Power Hill Park

Chanhasen High School (Joint Facilities)

Pioneer Pass Park

Bandimere Park

Pioneer Trail East

Audubon Road

Chanhasen Hills Park

Lyman Boulevard

Bandimere Heights Park

Carver Beach Playground

Carver Beach Park

Meadow Green Park

Kerber Pond Park

City Center Park

South Lotus Lake Park

Chanhasen Estates Park

Rice Marsh Lake Park

Riley Ridge Park

Rice Lake

North Lotus Lake Park

Lake Minnetonka

Lake Lucy

Lake Ann

Lake Susan

Lake Riley

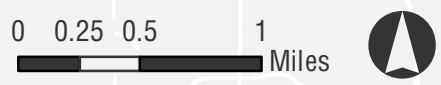
Lake Rice

LEGEND

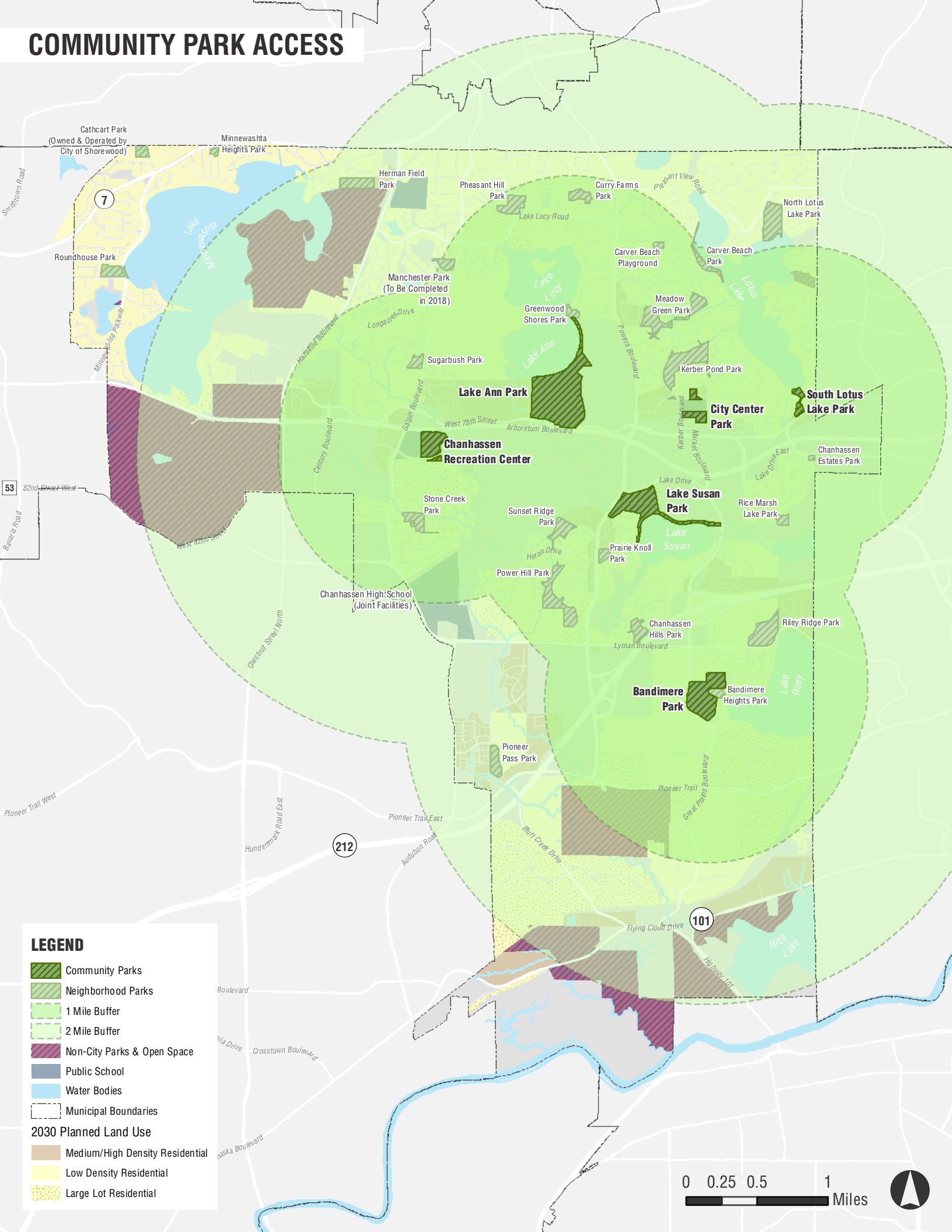
- Open Space
- Community Park
- Neighborhood Park
- Preserve
- Special Use
- Non-City Parks & Open Space
- Public School
- Water Bodies
- Municipal Boundaries

2030 Planned Land Use




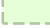



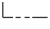
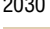


- Medium/High Density Residential
- Low Density Residential
- Large Lot Residential



COMMUNITY PARK ACCESS



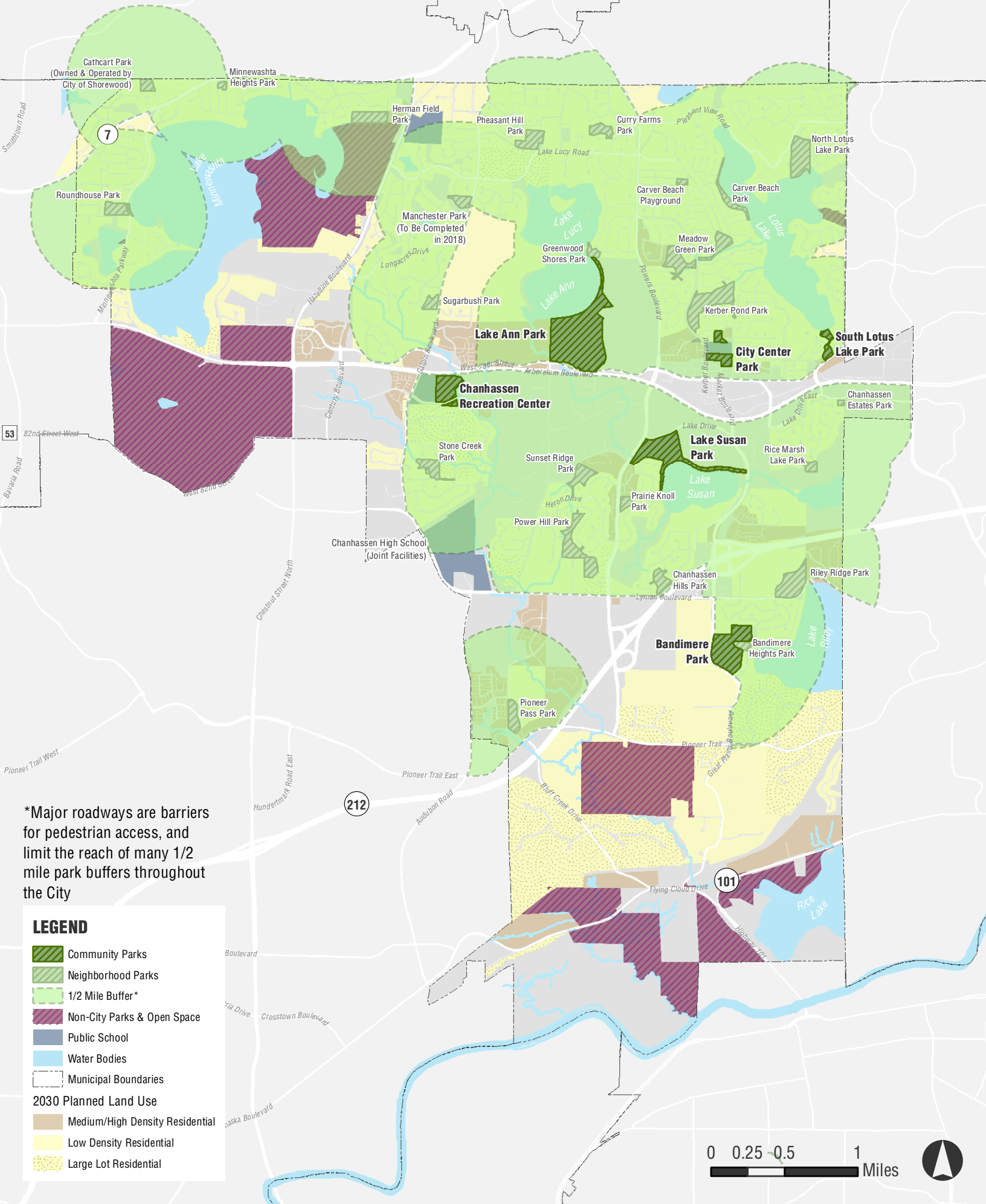
LEGEND

-  Community Parks
-  Neighborhood Parks
-  1 Mile Buffer
-  2 Mile Buffer
-  Non-City Parks & Open Space
-  Public School
-  Water Bodies
-  Municipal Boundaries
- 2030 Planned Land Use**
-  Medium/High Density Residential
-  Low Density Residential
-  Large Lot Residential

0 0.25 0.5 1 Miles



NEIGHBORHOOD PARK ACCESS



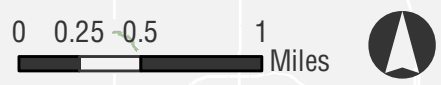
*Major roadways are barriers for pedestrian access, and limit the reach of many 1/2 mile park buffers throughout the City

LEGEND

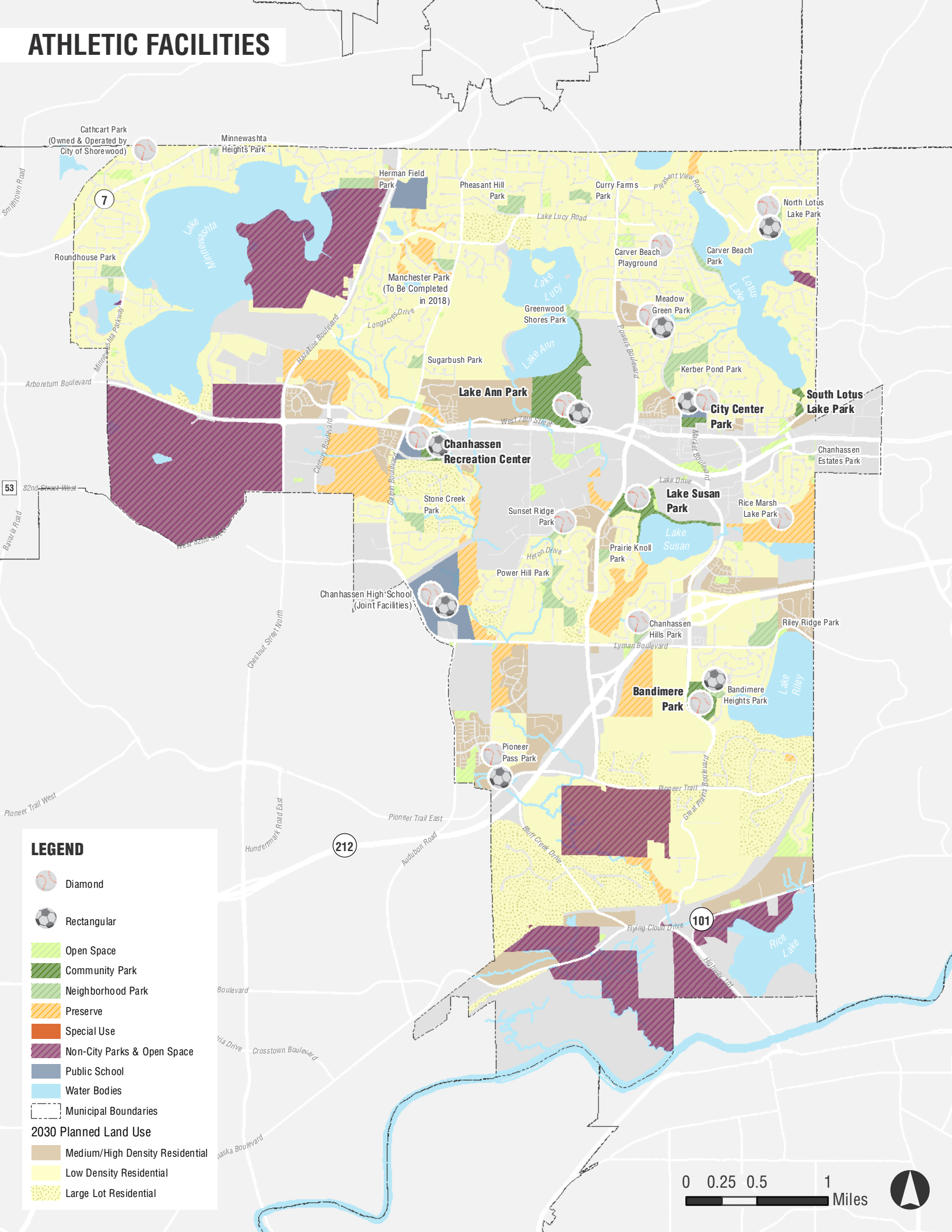
- Community Parks
- Neighborhood Parks
- 1/2 Mile Buffer*
- Non-City Parks & Open Space
- Public School
- Water Bodies
- Municipal Boundaries

2030 Planned Land Use

- Medium/High Density Residential
- Low Density Residential
- Large Lot Residential



ATHLETIC FACILITIES

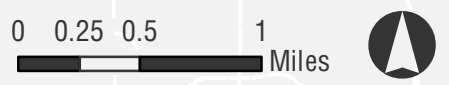


LEGEND

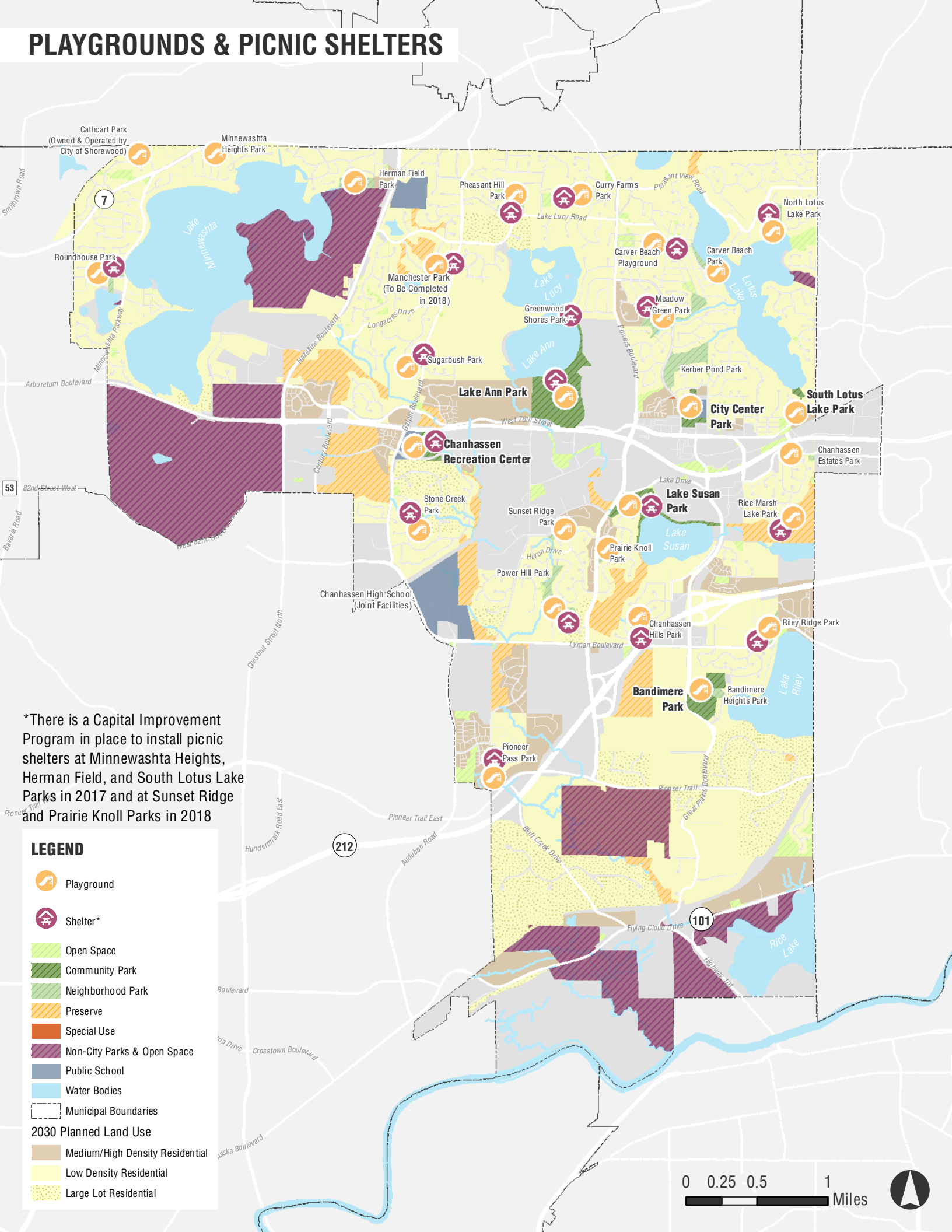
- Diamond
- Rectangular
- Open Space
- Community Park
- Neighborhood Park
- Preserve
- Special Use
- Non-City Parks & Open Space
- Public School
- Water Bodies
- Municipal Boundaries

2030 Planned Land Use

- Medium/High Density Residential
- Low Density Residential
- Large Lot Residential



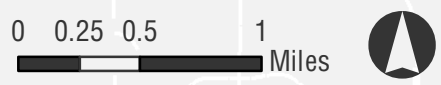
PLAYGROUNDS & PICNIC SHELTERS



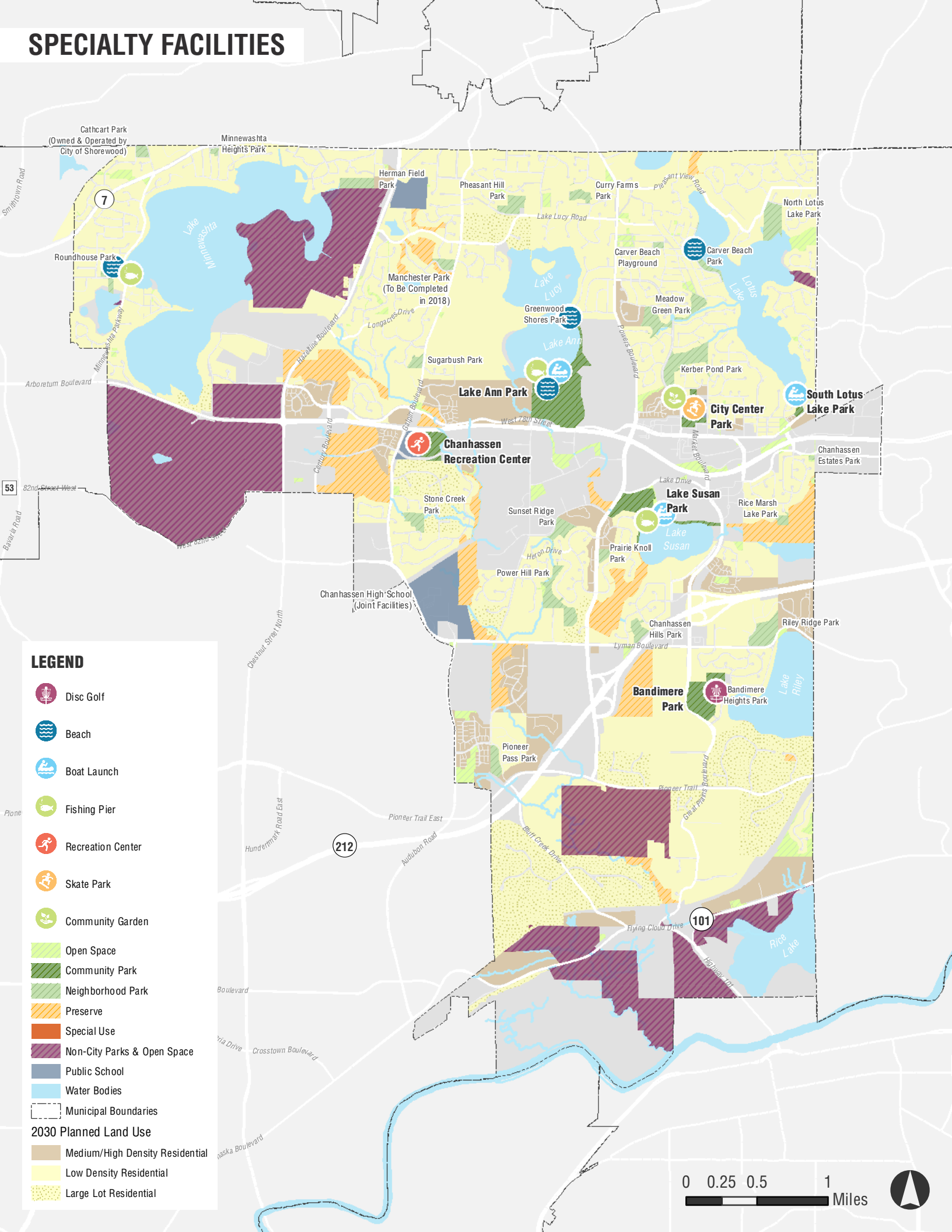
*There is a Capital Improvement Program in place to install picnic shelters at Minnewashta Heights, Herman Field, and South Lotus Lake Parks in 2017 and at Sunset Ridge and Prairie Knoll Parks in 2018

LEGEND















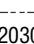



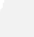
-  Playground
-  Shelter*
-  Open Space
-  Community Park
-  Neighborhood Park
-  Preserve
-  Special Use
-  Non-City Parks & Open Space
-  Public School
-  Water Bodies
-  Municipal Boundaries
- 2030 Planned Land Use**
-  Medium/High Density Residential
-  Low Density Residential
-  Large Lot Residential

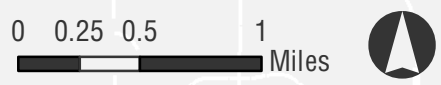


SPECIALTY FACILITIES

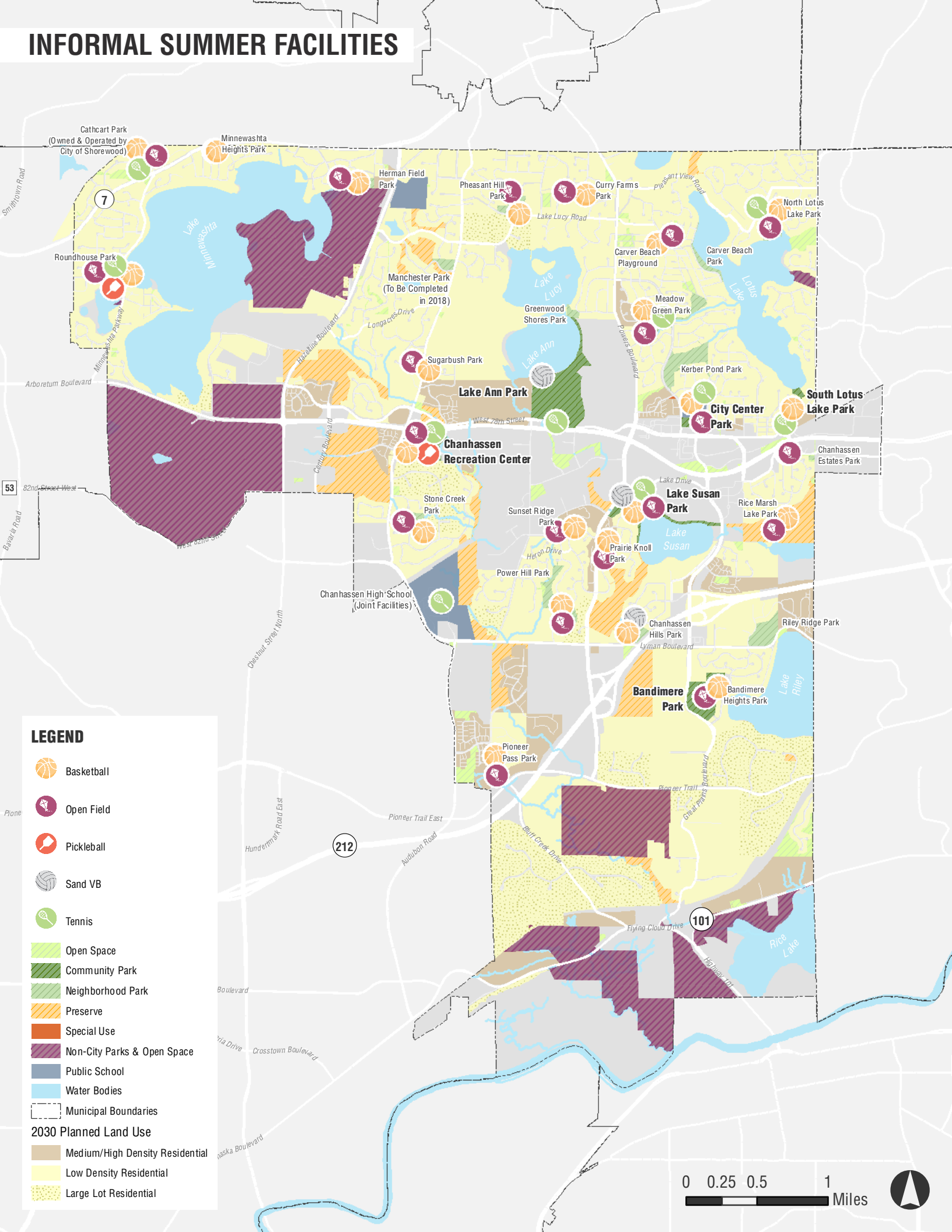


LEGEND

-  Disc Golf
-  Beach
-  Boat Launch
-  Fishing Pier
-  Recreation Center
-  Skate Park
-  Community Garden
-  Open Space
-  Community Park
-  Neighborhood Park
-  Preserve
-  Special Use
-  Non-City Parks & Open Space
-  Public School
-  Water Bodies
-  Municipal Boundaries
- 2030 Planned Land Use**
-  Medium/High Density Residential
-  Low Density Residential
-  Large Lot Residential

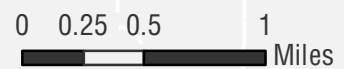


INFORMAL SUMMER FACILITIES

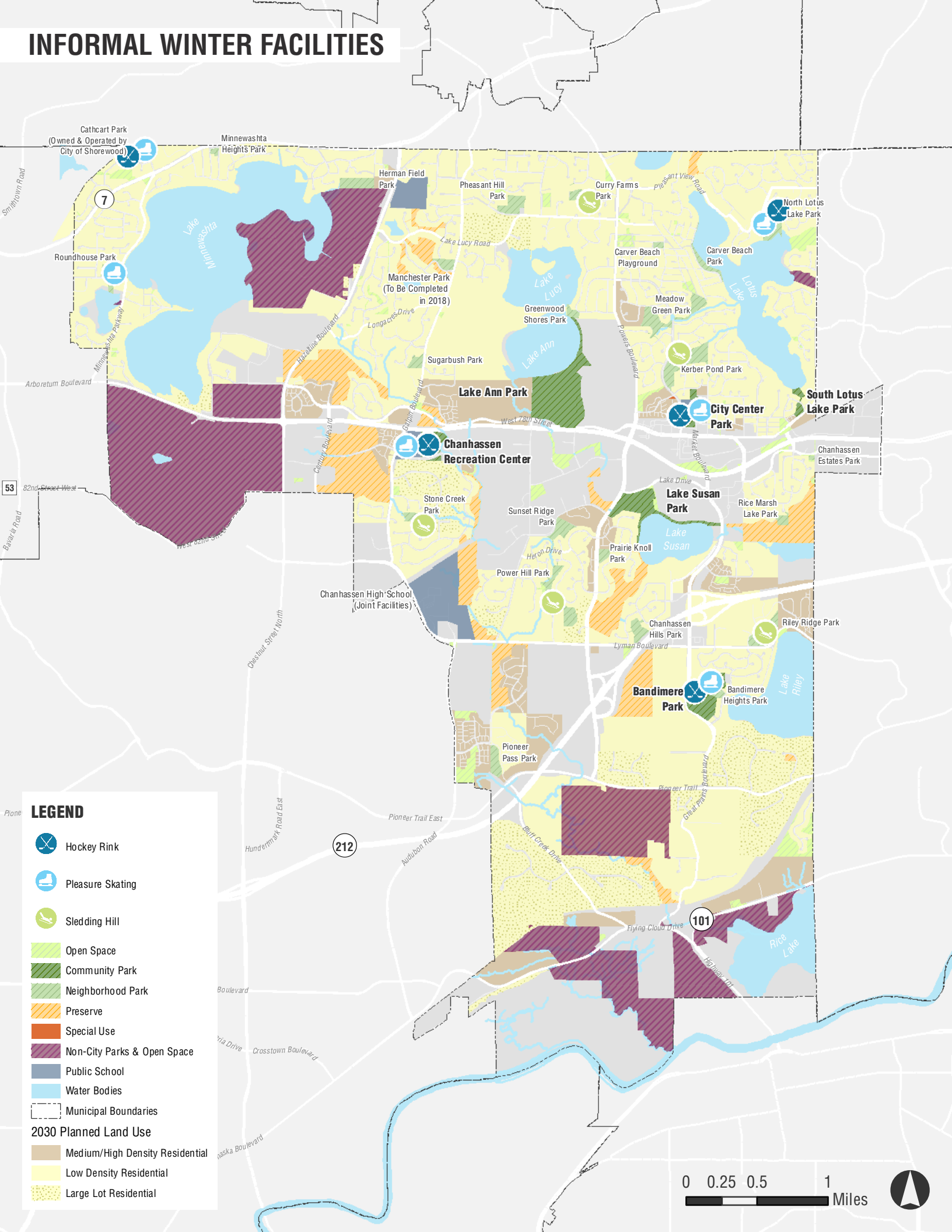


LEGEND

-  Basketball
-  Open Field
-  Pickleball
-  Sand VB
-  Tennis
-  Open Space
-  Community Park
-  Neighborhood Park
-  Preserve
-  Special Use
-  Non-City Parks & Open Space
-  Public School
-  Water Bodies
-  Municipal Boundaries
- 2030 Planned Land Use**
-  Medium/High Density Residential
-  Low Density Residential
-  Large Lot Residential

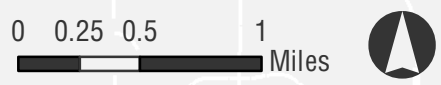


INFORMAL WINTER FACILITIES



LEGEND

- Hockey Rink
- Pleasure Skating
- Sledding Hill
- Open Space
- Community Park
- Neighborhood Park
- Preserve
- Special Use
- Non-City Parks & Open Space
- Public School
- Water Bodies
- Municipal Boundaries
- 2030 Planned Land Use**
 - Medium/High Density Residential
 - Low Density Residential
 - Large Lot Residential

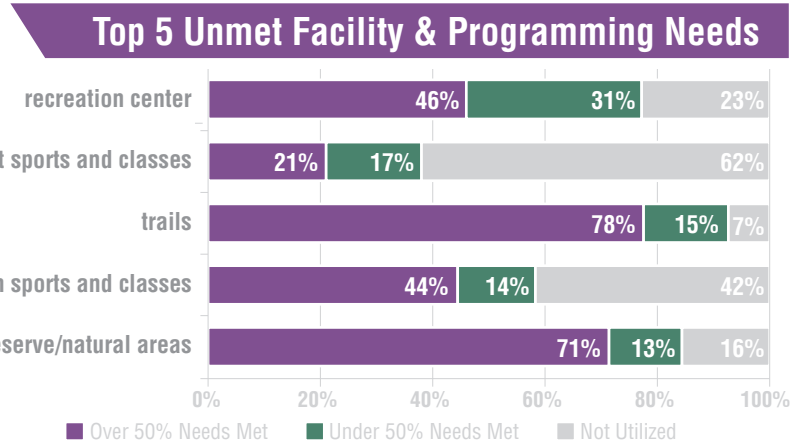
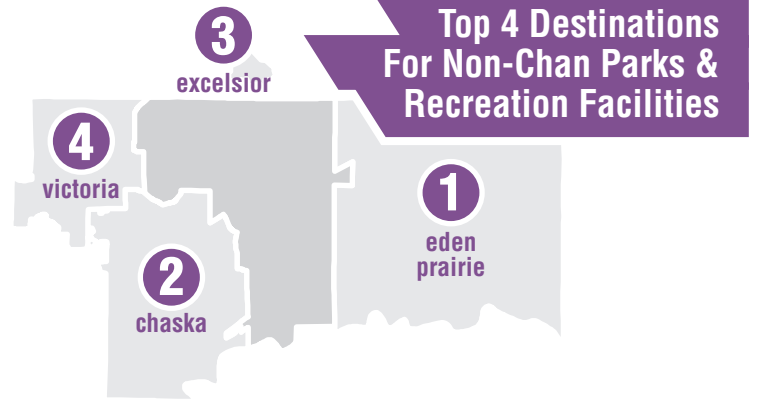
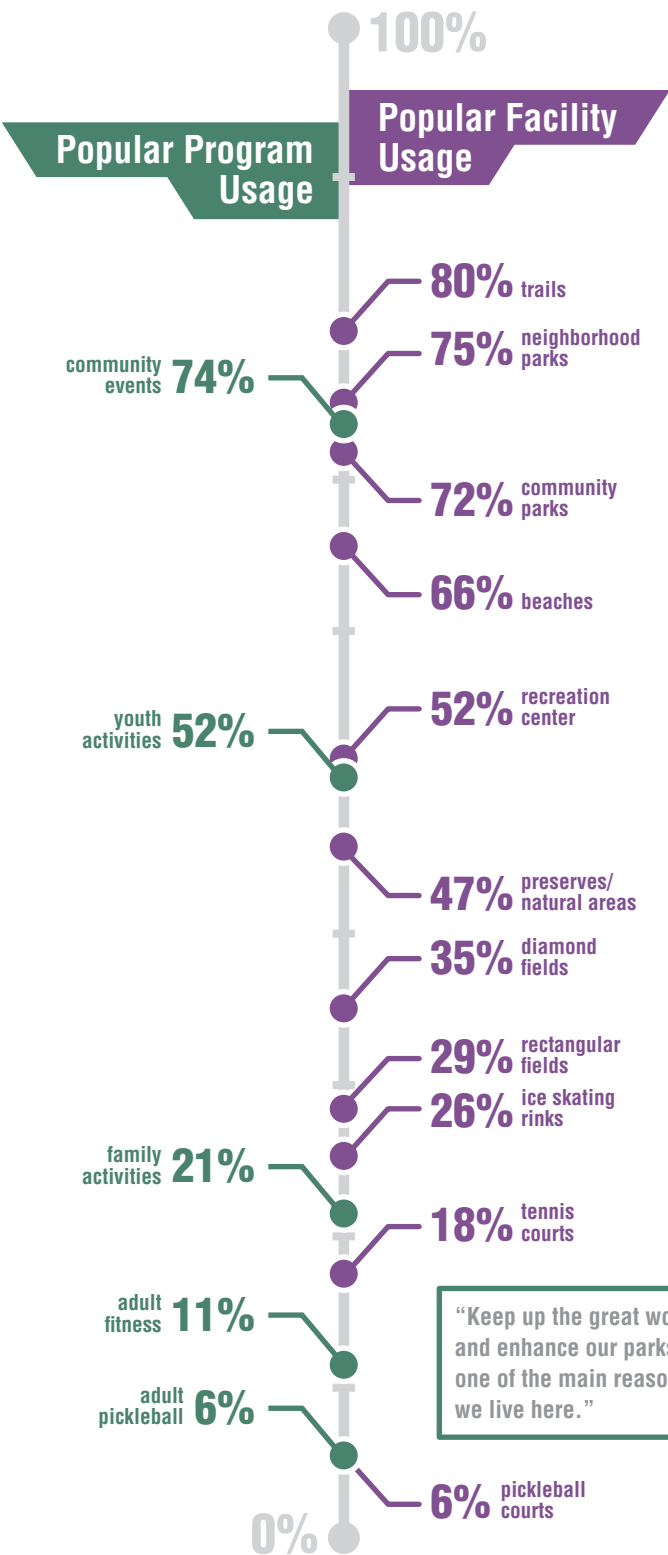
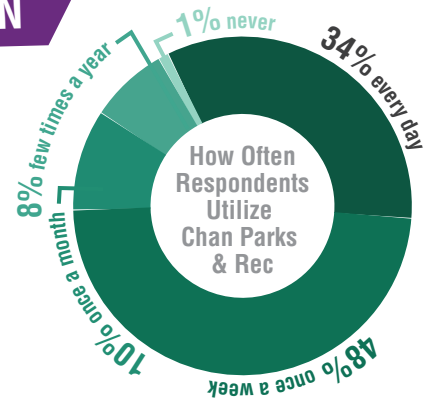




CHANHASSEN PARKS & RECREATION SYSTEM PLAN

Online Community Engagement Summary

Four different online engagement strategies were implemented in order to reach as many demographics as possible. Three online questionnaires captured public comments regarding the senior center, the recreation center, and the parks and recreation system in general. The fourth online strategy involved an interactive mapping software intended to collect geographic-based comments. This summary includes a synopsis of some of the significant findings from all four engagement techniques.



Select General Comments

"We are lacking in facilities to support our population here. A larger sports complex is needed."

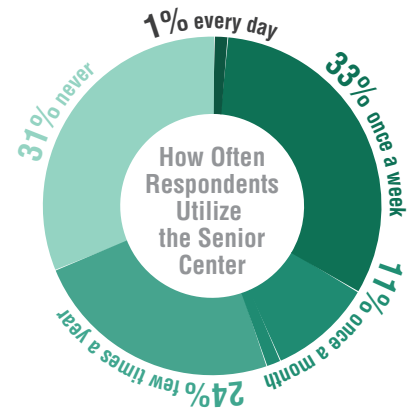
"Keep up the great work and enhance our parks; one of the main reasons we live here."

"Improving our existing rec center would add value and encourage pride in our community. It should be a top priority."

"While private rec facilities should fill the gaps in programming, something like an outdoor swimming pool should be seriously considered as a city run facility. Lifetime is the only option in the city and is not affordable for all."

SENIOR CENTER

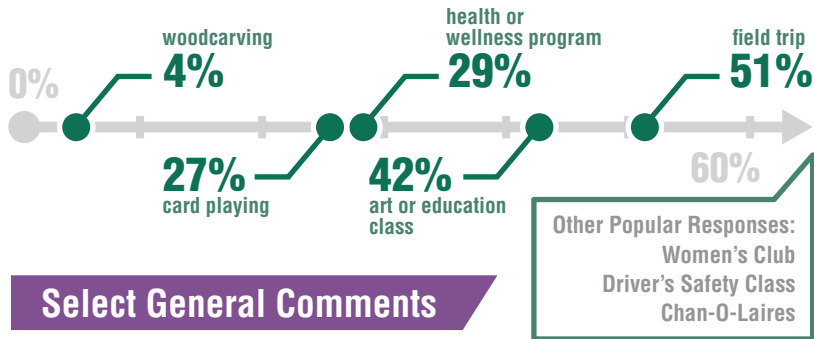
While all responses to the Senior Center survey were evaluated, only those from respondents over the age of 60 were considered for the charts included in this infographic. However, the comments included below are representative of all participating age groups.



Of Respondents That Never Use the Senior Center:



Existing Facility & Programming Usage



Select General Comments

"I am proud of what the existing Senior Center offers in relation to programming but we will be out growing the facility with the shift in retirees. And we do have a dynamic and hard-working director in Sue!!"

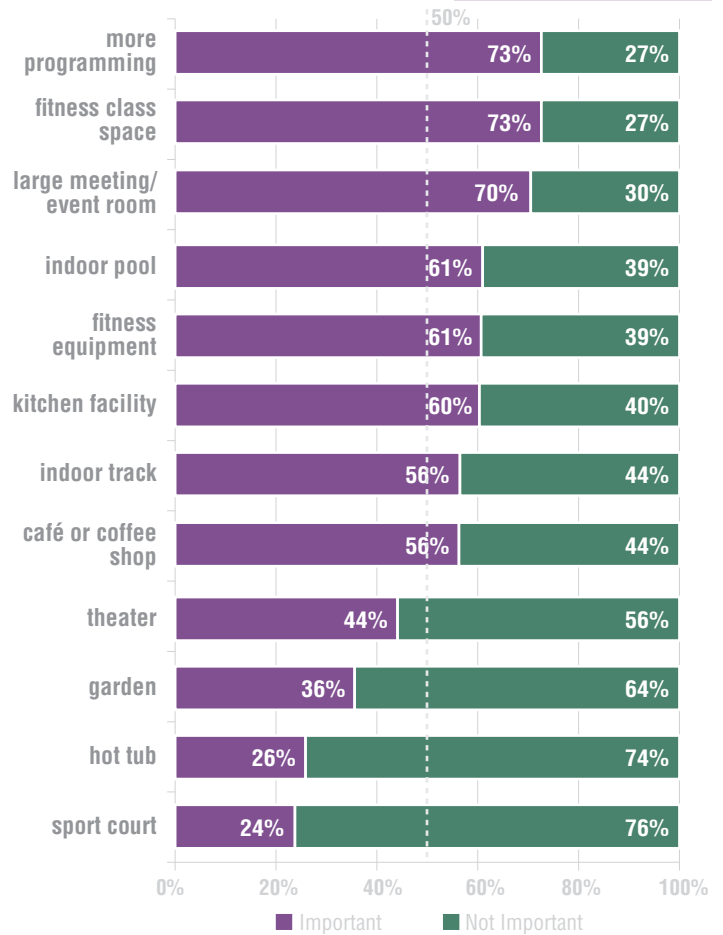
"From what I've seen, there isn't much offered for Senior Citizens that still work full-time. I would like to see some programs offered evenings or weekends."

"The location of the Chanhassen Sr. Center appears to be superb! It is easy to locate, access for pleasure and emergencies if needed. If you are considering a new community center please include the senior's space: Chaska's community center where all ages and all activities can participate is the ultimate (even church studies, meetings, etc.)"

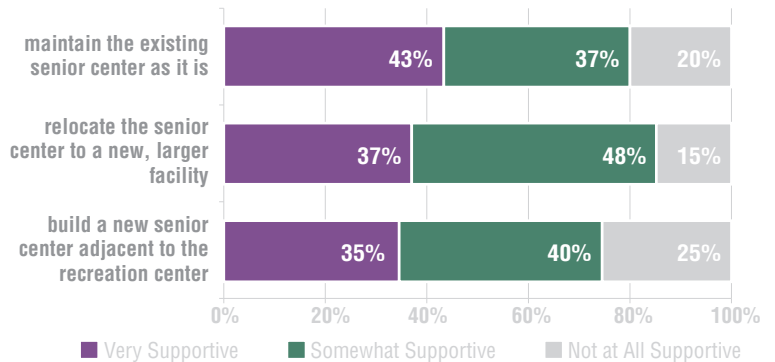
"As the population ages Chanhassen needs a viable senior center. The one we have is very small and does not have enough programs. A theater and art space are very important to me."

"Please keep the bus trips so we can get to places we can't drive to and that have limited parking."

Importance of Additional Facilities & Programming

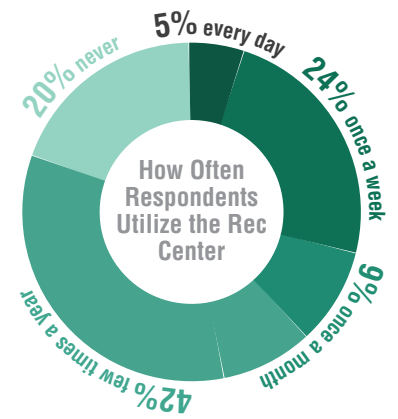


Support For Senior Center Alternatives



RECREATION CENTER

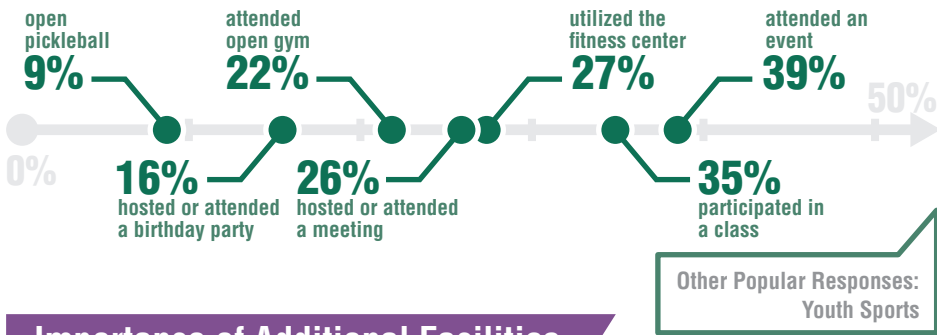
This survey was geared toward people who utilize the Recreation Center's facilities and programming, regardless of whether or not they are a resident of Chanhasseen. All of the questions specifically pertain to the Recreation Center rather than the park system as a whole.



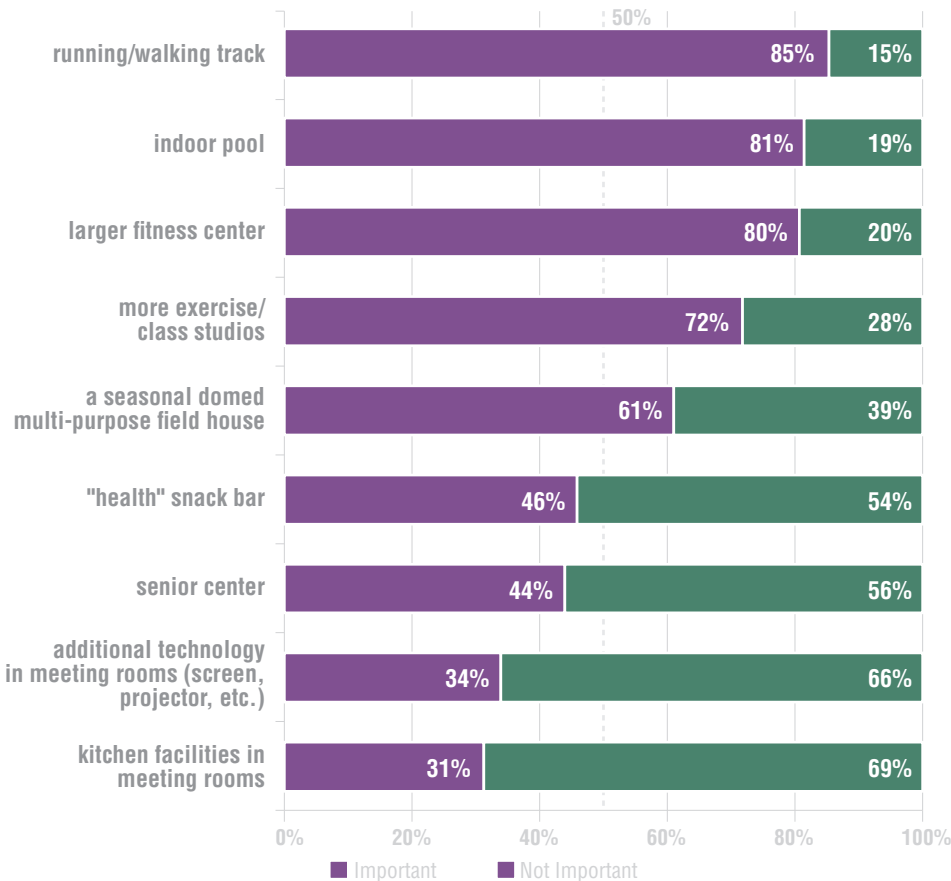
Of Respondents That Never Use the Recreation Center:



Existing Facility & Programming Usage



Importance of Additional Facilities & Programming



Select General Comments

"I hope it can expand, perhaps by moving to a new building and leaving the full building for an expansion of Bluff Creek."

"We need an economical alternative to the expensive and overly busy Lifetime Fitness. Doesn't need to be fancy but something more like a YMCA or the Chaska Community Center."

"More pickleball courts. As this sport grows, so should the number of courts."

"It is a very nice facility. I exercise there 3 days a week. The staff is friendly and helpful."

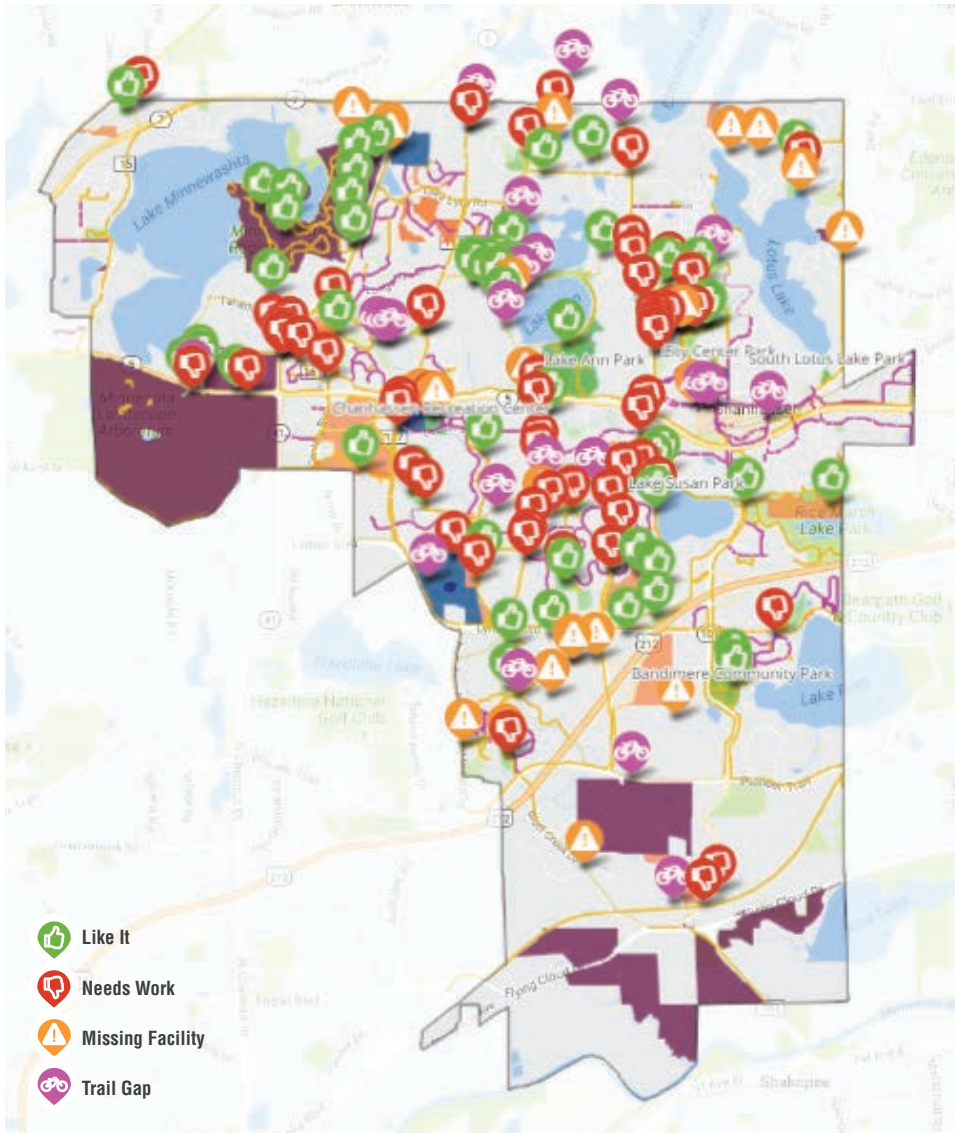
"The rec center needs to fill the needs of all community members. Currently, I feel the programming has a focus on children and families..."

"We would LOVE to go if you had swimming lessons in an indoor pool, and much more creative classes to choose from (art, clay, music, theater...)"

"An indoor public pool and walking track like Chaska Comm. Center....the private clubs are so costly!"

SOCIAL PINPOINT

Social Pinpoint is an online platform that helps users place geographically-referenced comments in the following categories: “Like it,” “Needs Work,” “Missing Facility,” and “Trail Gap.” This method of engagement received almost 170 responses distributed throughout the City, which can be seen on the map below. A selection of the most popular comments are displayed to the right by category.



Key Findings

- 1 The majority of comments across all categories were in reference to the trail system
- 2 While “Like it” contained a high number of responses, many were constructive as well as positive, pointing out missing facilities, trail gaps, and potential opportunities
- 3 Many comments urged the City to maintain Prince’s land as natural, open space, and suggested the only development be hiking or skiing trails
- 4 Tunnels were highlighted as an important amenity for respondents, and many expressed desire for more along Highway 5, especially in closer proximity to the Minnesota Landscape Arboretum

63 identified areas that need work

“The trails around Lake Susan need improvement. Very cracked, pitted, bumpy and uneven. Have seen people trip and fall.”

“The Chanhassen Rec Center is sub-standard compared to other adjacent towns. We could definitely improve it. Aim high, add an indoor skating rink and a pool.”

“Need a safe way to cross Highway 5 at Powers. Underground tunnel?”

57

identified areas they like

“I love [the] walking path behind the High School and how we are maintaining the natural area here.”

“We love the proposed trails near Lake Lucy and Lake Ann but do not want any of Prince’s land to be developed! Keep land as a preserve!”

“The tunnel under 41 is a great way to get to the Minnewashta trails.”

23 identified missing facilities

“[Southeast of Bluff Creek Preserve] is another wooded area that would be nice to preserve in its natural state and have public access allowed.”

“More painted/signed crosswalks would be nice on Audubon as there is lots of fast moving traffic.”

“Consider adding a fishing dock accessible from North Lotus Park.”

22

identified trail gaps

“The city already has a future trail connection planned from Lake Lucy to Lake Ann Park. Make it happen!”

“Bringing a full loop path around Lake Ann would be a huge advancement in running options for the city.”

“Can Chanhassen and other cities work to get a path all the way from 5 to downtown Excelsior?”

*Chanhassen Parks and Recreation System Plan
General Community Questionnaire
Summary of Open-ended Responses to Questions #8 and #11
October, 2016*

Questions 8 and 11 on the General Parks and Recreation Questionnaire included many open-ended responses. The responses are summarized below. Responses to the two questions were very similar.

Question #8: Where your needs are not being met, what types of improvements would you recommend? (487 responses)

- There is a large desire for a new recreation center with a fitness center, indoor walking track, indoor/outdoor pool or splash pad – respondents often cited Chaska and Eden Prairie community centers as places they like to visit but would prefer to have the same type of facility in Chanhassen. Lifetime Fitness was frequently mentioned as an expensive alternative to a public recreation center. Other amenities that were mentioned: indoor ice rink, café/concessions, climbing wall, and options for teens.
- Several respondents mentioned the need for a wider range of adult recreation options, classes, and events, including evening times, athletics such as volleyball, group fitness, and events for single people.
- Better maintained parks are desired by several respondents who mentioned issues, such as poor drainage, old/deteriorating play and athletic equipment, and poor surfaces on courts and trails.
- Dog owners weighed in, as well as people who don't like dogs in the parks, about issues including: drainage improvements needed to the dog park, desire for more off-leash dog parks, more doggy bag dispensers, and more trash bins along trails where dogs walk.
- Lake water quality and beach cleanliness were listed as areas desired for improvements.
- There is a desire for more events and programming in parks and better marketing and awareness of what is going on in the parks and at the Recreation Center and where the trails are located.
- Many respondents appreciate the natural areas in Chanhassen and want more natural areas preserved from development. Lake Ann was mentioned frequently as an envisioned preservation area with a trail around the entire lake.
- Pickleball players responded with a desire for more courts, indoor and outdoor.
- Several respondents requested permanent restroom facilities in parks, especially at Lake Ann Park.
- There is a large desire for better trail connectivity. Respondents appreciate the existing trails, but want better connections under and across busy roads, more natural surface trails, and connections to other communities and destinations within Chanhassen. Some mentioned the desire for mountain biking and cross country ski trails.

- Youth recreation was mentioned as a highly used program, but concerns and comments were listed regarding desires for more flexible schedules (evenings), better coaching, and more options for young kids and teens.

Question #11: Do you have any other ideas or suggestions about the parks and recreation system?

(291 responses)

- A large number of respondents mentioned the desire for a new community center with aquatic facilities. There were mentions of an indoor pool, an outdoor pool, splash pads, and swimming ponds.
- Several comments mentioned the need for more adult activities for young to middle-aged adults involving arts, fitness, or outdoor classes.
- There are desires for improved athletic facilities, such as flexible diamond fields that work for different age groups, better basketball courts, and more fields overall.
- Respondents mentioned the need for more dog friendly parks and facilities.
- Desires for general neighborhood park improvements were mentioned, including more skating rinks, more park lighting, shade, picnic and grill amenities, and improved play equipment.
- Several people commented on their appreciation for the parks, Chanhassen parks and recreation staff, and the great events in the city.
- Some comments included suggestions about funding, partnerships, and comparison to other city's facilities. There are concerns about paying for new services, suggestions for a referendum, requests for the city to partner with private facilities, and desires for facilities similar to Eden Prairie, Chaska, and Victoria.
- Many respondents are concerned about development of natural areas in Chanhassen – they expressed wishes for the city to purchase Prince's land, preserve more open space areas in the city, and clean up invasive species and water pollution occurring from development.
- Trails are greatly used and appreciated by respondents, but trail extensions and trail amenities and support facilities are desired.
- Youth activities and programming were mentioned as important to continue and expand for more age groups and a larger variety of programs.

Chanhassen Parks and Recreation System Plan

Pop Up Meetings

Summary of Pop Up Input

October, 2016

Pop Up Meetings

- Farmers Market, Sept. 3, 2016
- Chanhassen Rec Center – Pickleball Courts, Sept. 12, 2016
- Chanhassen Rec Center Lobby, Sept. 20, 2016
- Lake Minnewashta Dog Park, Sept. 21, 2016
- Chanhassen Library, Sept. 28, 2016
- Chanhassen Rec Center – Barnyard Boogie, Sept. 23, 2016
- Chanhassen Rec Center – Lobby, Sept.-Oct., 2016
- Planning Commission Meeting – October 4, 2016

What do you value about Chanhassen parks, trails, and recreation?

- Nice parks and trails
- Pickleball courts are great
- Community events
- Music in the park
- Dog park is a good value and well maintained
- Ped bridge over Hwy 7
- Proximity to homes

What are new recreation trends that the city should focus on for new facilities and programs?

- More pickleball courts, and indoor pickleball courts
- Trail connections – regional trails
- Outdoor pool
- Splash pad
- Ice arena
- New community center
- Tai Chi
- Healthy options in vending machines
- Senior activities/recreation – group fitness classes
- Therapy pools
- Bike track
- Natural surface trails
- Community kitchens for cooking classes
- Public/private partnerships

- Destinations – restaurants/cafes/beer gardens
- Amphitheater
- Conservation areas and interpretation

What do you think is the top priority for Chanhassen parks and recreation?

- Pool/splash pad
- Indoor walking track
- Expand the Recreation Center; Nice community center (like Eden Prairie)
- Indoor hockey rink
- Restrooms at Lake Ann Park
- Weed control in lakes
- Athletic field lighting
- Pickleball courts
- Meeting needs of seniors
- Keep up with trends
- Buy Prince's land for park
- Natural space preservation
- Connectivity
- Wifi in parks
- Art center
- Dog park priorities – fix drainage issues, add waste bins

What is the #1 public recreation amenity you think is missing from Chanhassen?

- Splashpad/Pool
- Platform tennis
- More gym space
- Pickleball court improvements – indoor courts, wind screens on outdoor courts
- Better community center with more gyms and pool (partner with YMCA)
- Indoor/outdoor pool
- Indoor park
- Indoor hockey rink
- Improved play equipment
- More evening activities
- Amphitheater / Bandshell
- Restaurant / beer garden destination
- Trail support amenities are needed – trailhead, trail connections, interpretive information
- Protection of high value areas – natural areas, views, etc.

Chanhassen Parks and Recreation System Plan

Stakeholder Meetings

Summary of Meeting Input

October, 2016

Athletic Associations Stakeholder Meeting – October 10, 2016

- General appreciation for City of Chanhassen high level of maintenance of fields
- Improvements needed at Lake Ann Park for tournaments
 - Permanent restrooms
 - More parking
- Interest in following through on the recommendations listed in the Athletic Facilities Study
 - More soccer fields
 - Lights at Bandimere Park
- Participation in soccer is growing, baseball/softball participation is growing at the age 5-8 level

Senior Commission Meeting – October 21, 2016

- Appreciation for trails and trail plowing in winter
- High interest in trails and trail maintenance
 - Fix tripping hazards and downed trees
 - More grade separated crossings are desired (i.e. tunnel close to arboretum entrance)
 - More benches along trails
 - Wayfinding signage-distances, destinations, loops, slopes, city contact info.
 - Trail gap between Bluff Creek Drive and Flying Cloud
 - Provide online maps
 - Hwy 5 is a major barrier
- Desire for indoor fitness facilities
 - Walking track
- Desire for better/safer ADA accessible parking and building connections at Senior Center and Rec Center
- Maintain and expand bird habitat
- Concerns about water quality issues stemming from turf lawn pesticides and herbicides
- Appreciation for current Senior Center programming and location – few improvements needed at existing location