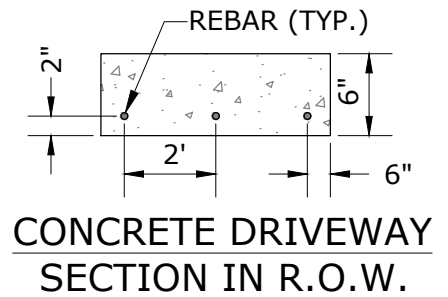


**NOTES:**

1. ON BITUMINOUS STREETS, CONTRACTOR SHALL SAWCUT AND REPLACE PAVEMENT TO PROVIDE A MINIMUM 18" WIDE STRIP OF NEW STREET SECTION. REPLACE BITUMINOUS WITH SAME PAVEMENT TYPE TO MATCH EXISTING STREET SECTION. APPLY TACK COAT TO EXISTING PAVEMENT SURFACES/EDGES PRIOR TO PLACING NEW BITUMINOUS.
2. NEW CONCRETE DRIVEWAY SHALL BE OFFSET BACK 0.5' FROM EXISTING BITUMINOUS PAVEMENT.
3. FOR AREA OF DRIVEWAY LOCATED WITHIN THE R.O.W., DRIVEWAY PAVEMENT THICKNESS SHALL BE A MINIMUM OF 6" OF CONCRETE WITH 6" OF CLASS 5 AGGREGATE BASE AND INSTALL #4 (1/2") REBAR SLAB REINFORCEMENT PLACED @ 2' ON CENTERS.
4. IF WATER SHUTOFF IS IN THE DRIVEWAY PAVEMENT, A COVER AS MANUFACTURED BY MCDONALD 74M1A SERIES WITH AN 8" OPENING FRAME AND COVER OR APPROVED EQUAL SHALL BE INSTALLED.
5. IF RADIUS IS INSTALLED, A MINIMUM 3' RADIUS IS REQUIRED.



# RESIDENTIAL CONCRETE DRIVEWAY ENTRANCES WITHOUT CURBS

REVISED: 2-24

ENGINEERING DEPARTMENT

PLATE NO.:

**5208B**