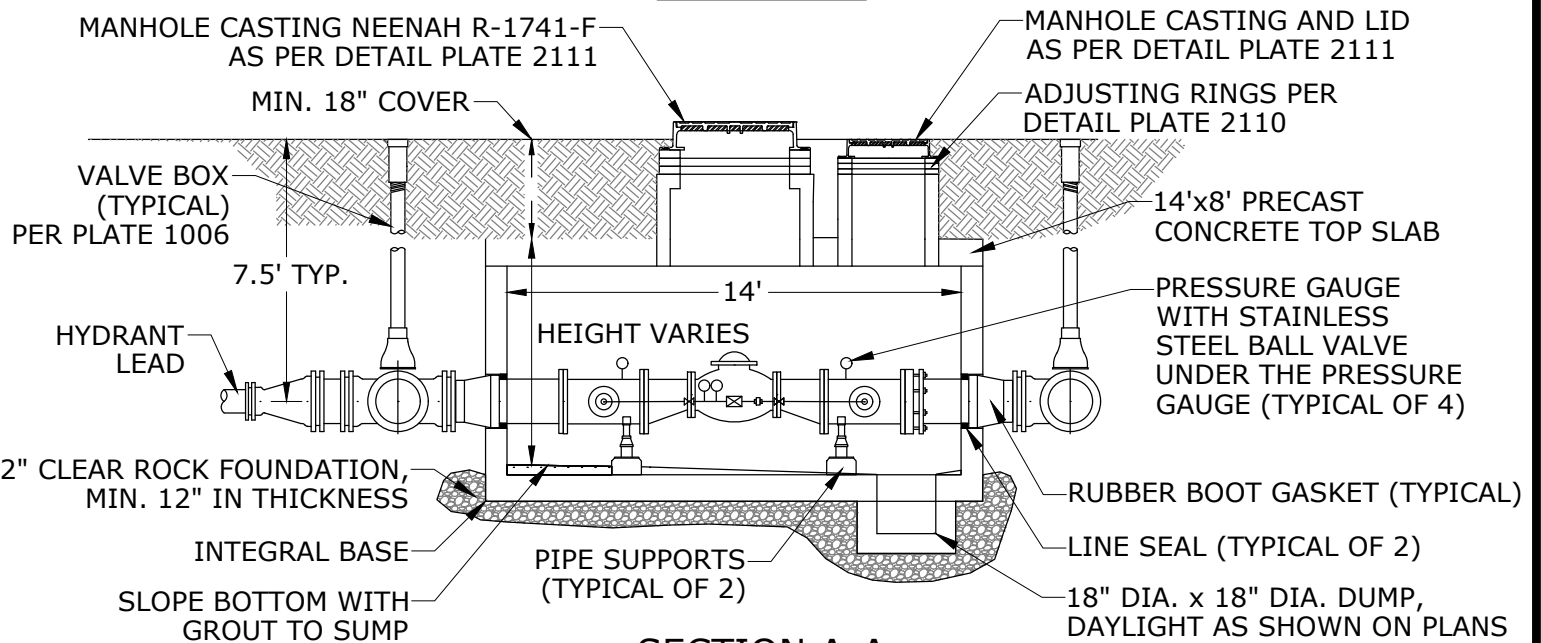


PLAN VIEW



SECTION A-A

NOTES:

1. SHOP SUBMITTALS REQUIRED FOR REVIEW BY THE ENGINEER PRIOR TO THE DELIVER OF MATERIALS TO THE SITE.
2. PRESSURE GAUGES SHALL BE STAINLESS STEEL, 2.5" WIKA FLEXWINDOW GAUGES.
3. PRESSURE GAUGES ON LOW SIDE SHALL READ FROM 0 TO 100 PSI.
4. PRESSURE GAUGES ON HIGH SIDE SHALL READ FROM 0 TO 200 PSI.
5. SEE PLANS FOR WATERMAIN PIPE SIZES.



TYPICAL PRESSURE REDUCING VALVE

REVISED: 2-24

ENGINEERING DEPARTMENT

PLATE NO.:

1010