

# GET A GRANT

## TO REPAIR SEWER LATERALS ON PRIVATE PROPERTY

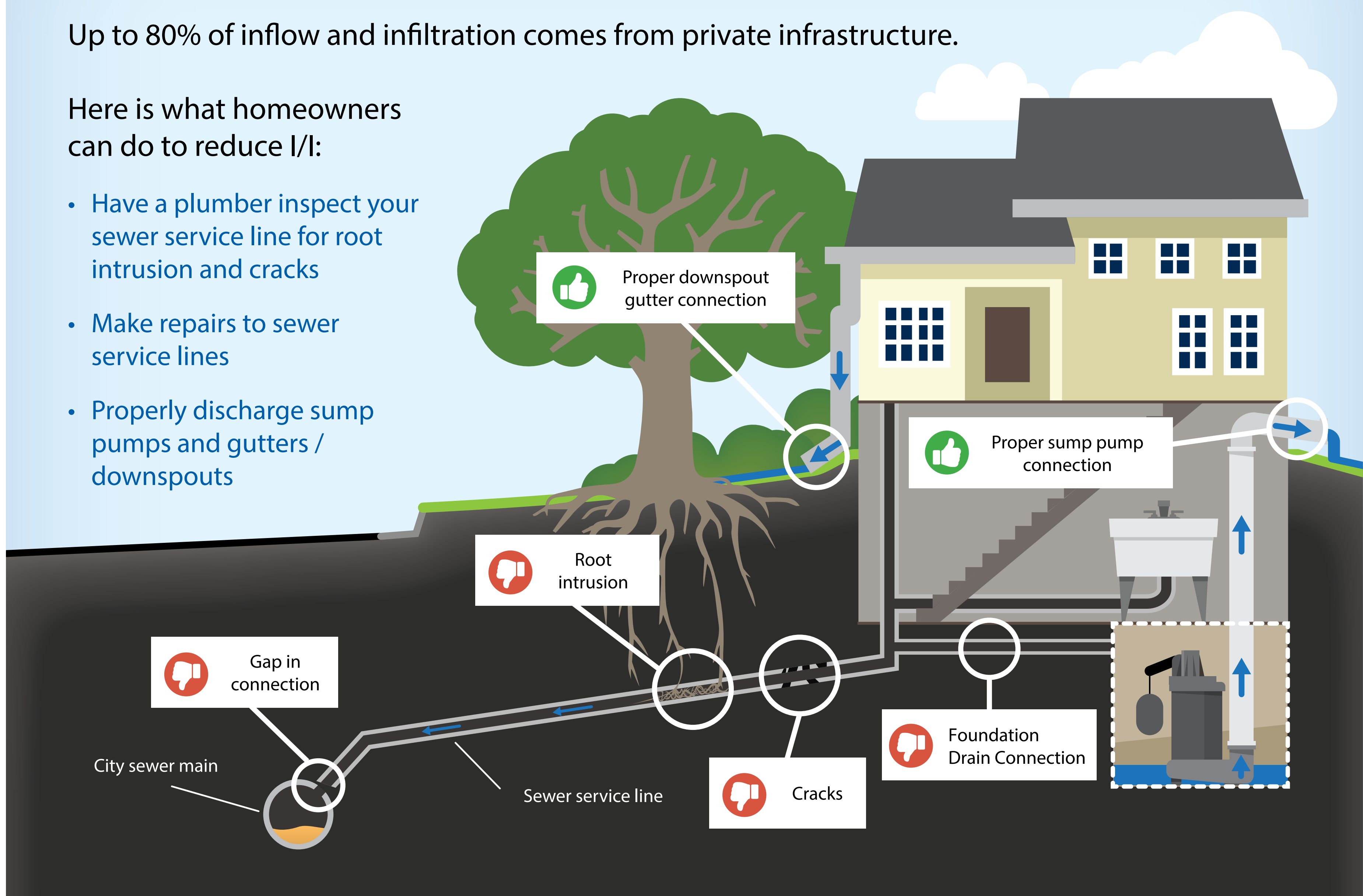
**Inflow and infiltration is clear water - stormwater and groundwater - that enters the wastewater system.** It overloads the system and can cause costly sewer backups into homes and buildings. These backups are messy and expensive, requiring you to repair the sewer pipe and restore any affected areas of your home.

### You can reduce inflow and infiltration

Up to 80% of inflow and infiltration comes from private infrastructure.

Here is what homeowners can do to reduce I/I:

- Have a plumber inspect your sewer service line for root intrusion and cracks
- Make repairs to sewer service lines
- Properly discharge sump pumps and gutters / downspouts



## AM I ELIGIBLE?

Grant reimbursement for residents of the **24-01 project** are eligible for **100%** of the costs, **up to \$10,000**. Eligible work includes:

- >> Private lateral repair and/or replacement
- >> Foundation drain disconnections & new sump pump, if associated with the foundation drain disconnect
- >> Lateral televising and cleaning costs if:
  - Applicant meets the equity need
  - Televising & cleaning result in repair or replacement of sewer lateral