

2024 City Pavement Rehabilitation Project

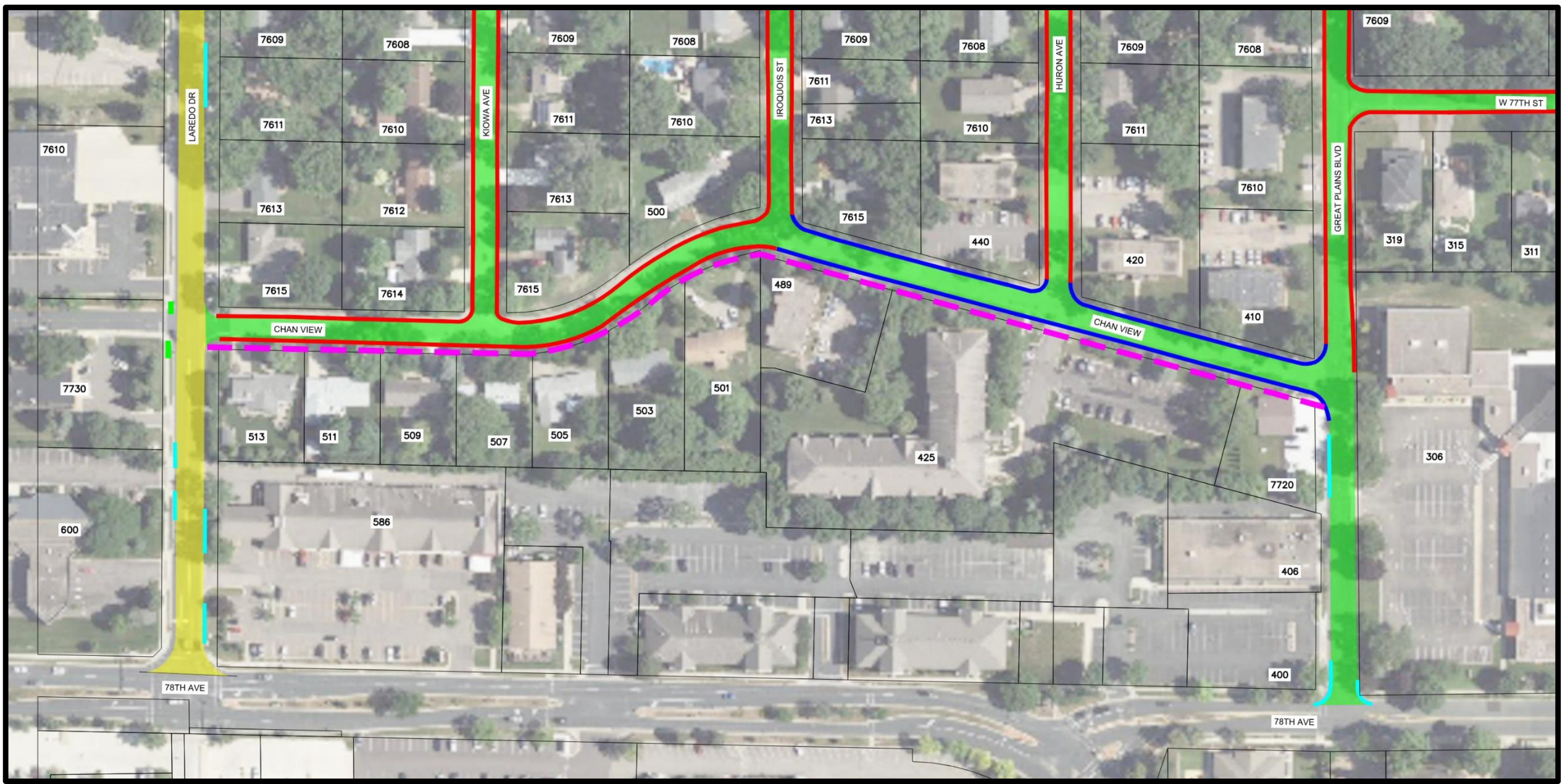
CITY PROJECT 24-01









CHAN VIEW SIDEWALK EXTENSION (OPTIONAL)

We are looking for public feedback on the needs or interest for a new sidewalk connection through the Chan View Area neighborhood. This sidewalk would be located along the south side of Chan View extending from Great Plains Boulevard to Laredo Drive. As a part of the feasibility study for the project, we sent out surveys to gauge interest in the sidewalk extension. Please fill out a survey today to provide us your feedback on whether you would like to have this new sidewalk constructed with the project. The sidewalk extension would follow the city's standard assessment policy which would assess 40% of the cost to the residents of the Chan View Neighborhood. Below are the approximate assessment increases each assessable unit would receive.

LOCATION



LEGEND	
	2.5" MILL AND OVERLAY
	FULL DEPTH RECONSTRUCTION
	SURMOUNTABLE CONCRETE CURB & GUTTER
	B612 CONCRETE CURB & GUTTER
	SPOT CURB REPLACEMENT
	POTENTIAL SIDEWALK EXTENSION

COST ASSESSMENT

ORIGINAL TOTAL ASSESSABLE COST	TOTAL ASSESSABLE COST WITH SIDEWALK	ORIGINAL ASSESSMENT PER UNIT	ASSESSMENT PER UNIT WITH SIDEWALK	TOTAL ASSESSMENT INCREASE
\$1,144,000	\$1,248,000	\$4,578	\$4,994	\$416



QR code link to project website

Click on the "Subscribe" button to sign up for project updates.