

2024 City Pavement Rehabilitation Project

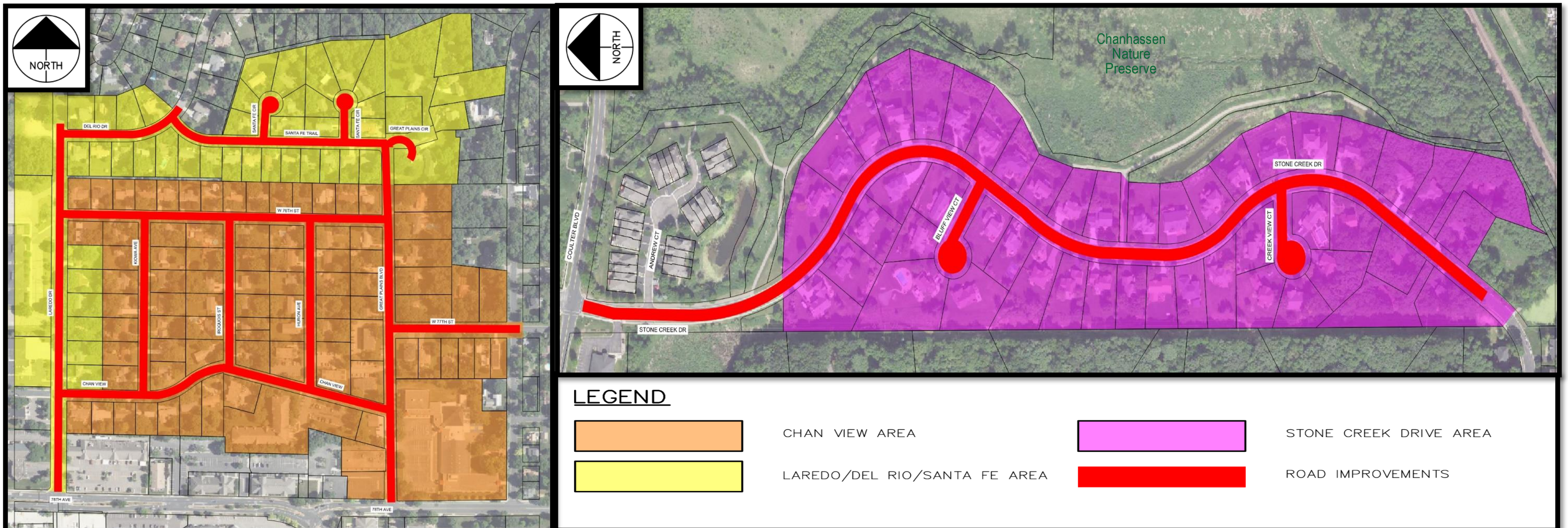
CITY PROJECT 24-01



PROJECT UPDATE

As part of the city's continuing capital improvement efforts, the city has authorized its consulting engineer, Kimley Horn & Associates, to prepare a feasibility study for the 2024 City Pavement Rehabilitation Project, which includes resurfacing of streets, spot soil corrections or reconstruction, spot curb and gutter repairs, ADA improvements, and storm sewer, sanitary sewer, and watermain spot repairs in the Laredo/Del Rio (Resurfacing), Chan View/Great Plains/76th St (Reconstruction) and Stone Creek Neighborhoods (Rehabilitation).

LOCATION



CHAN VIEW AREA

Chan View area lies between Chan View and 76th St on the north and south, and Kiowa Ave and Great Plains Blvd on the west and east, including the extension of W 77th St to Frontier Trail. With approximately 1.27 miles of roadway.

LAREDO/DEL RIO/SANTA FE DR AREA

Laredo/Del Rio/Santa Fe area consists of Laredo Dr from 78th Ave to Del Rio Dr, Del Rio Dr from Laredo Dr to Santa Fe Trl, Santa Fe Trl, both cul-de-sacs on Santa Fe Cir and Great Plains Cir. With approximately 0.73 miles of roadway.

STONE CREEK DRIVE AREA

Stone Creek Drive area consists of Stone Creek Drive between Coulter Blvd and the crosswalk near the intersection with Boulder Rd. With Approximately 0.66 miles of roadway.

PROJECT SCHEDULE

Public Open House, Feasibility Study & Design	Bid Opening	Public Informational Open House	Assessment Hearing / Award Contract	Start Construction	Substantial Completion
December 2023 – February 2024	March 2024	April 2024	April 2024	May 2024	November 2024

CONTACTS

George Bender, P.E.
Assistant City Engineer
City of Chanhassen
gbender@ChanhassenMN.gov
(952) 227-1164

Erik Henricksen, P.E.
Project Engineer
City of Chanhassen
ehenricksen@ChanhassenMN.gov
(952) 227-1165



QR code link to project website

Click on the "Subscribe" button to sign up for project updates.