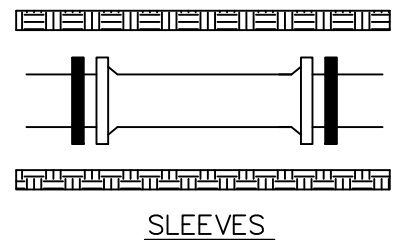


 DENOTES
MEGALUG

NOTES:

1. MEGALUGS TO BE USED AT ALL MECHANICAL JOINTS.
2. PLACE CONCRETE BLOCK UNDER ALL GATE VALVES AND HYDRANTS.
3. THRUST BLOCKING AT ALL TEES, BENDS, AND HYDRANTS.
4. ALL FITTINGS, NUTS, AND BOLTS SHALL BE COR-BLUE NUTS, BOLTS AND WASHERS OR STAINLESS STEEL.
5. BLOCKING SHALL BE AGAINST UNDISTURBED SOILS.



**CITY OF
CHANHASSEN**

TYPICAL
MEGALUG
LOCATION

REVISED: 3-23

FILE NAME: G:\ENG\SPCS\1009

ENGINEERING DEPARTMENT

PLATE NO.:

1009