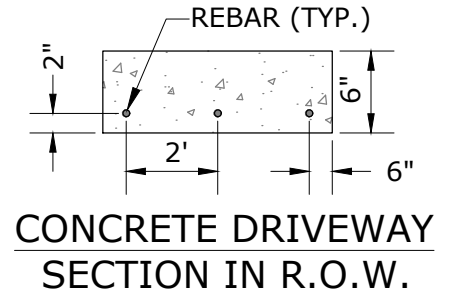


NOTES:  $\frac{3}{4}$ " ROUNDED LIP

1. ON BITUMINOUS STREETS, CONTRACTOR SHALL SAWCUT AND REPLACE MINIMUM 18" WIDE STRIP OF NEW STREET SECTION. REPLACE BITUMINOUS WITH SAME PAVEMENT TYPE TO MATCH EXISTING STREET SECTION. APPLY TACK COAT TO EXISTING PAVEMENT SURFACES/EDGES PRIOR TO PLACING NEW BITUMINOUS.
2. IF THE EXISTING CONCRETE CURB ACROSS THE DRIVEWAY NEEDS TO BE REPLACED, THEN NOTE 1 AND THE ABOVE DETAIL FOR THE STREET REPLACEMENT SHALL BE USED. THE REMAINING CURB SECTION LEFT IN-PLACE ON EACH SIDE OF THE DRIVEWAY SHALL BE A MINIMUM OF 5' TO THE NEXT JOINT. IF LESS THAN 5' OF CURB WILL REMAIN TO THE NEXT JOINT OR IF PROPER DRAINAGE CANNOT BE MAINTAINED, REPLACE THE CURB SECTION TO THE NEXT FULL JOINT.
3. FOR AREA OF DRIVEWAY LOCATED WITHIN THE R.O.W., DRIVEWAY PAVEMENT THICKNESS SHALL BE A MINIMUM OF 6" OF CONCRETE WITH 6" OF CLASS 5 AGGREGATE BASE AND INSTALL #4 ( $\frac{1}{2}$ " ) REBAR SLAB REINFORCEMENT PLACED @ 2' ON CENTERS. DRILL AND EPOXY REBAR INTO EXISTING CONCRETE TO A MINIMUM DEPTH OF 4".
4. B6 CURB SHALL BE POURED MONOLITHICALLY WITH DRIVEWAY. SURMOUNTABLE CURB MAY BE POURED SEPARATELY. IF SURMOUNTABLE CURB IS POURED SEPARATELY, PLACE EXPANSION JOINT FELT MATERIAL BEHIND CURB PRIOR TO DRIVEWAY INSTALLATION.
5. IF WATER SHUTOFF IS IN THE DRIVEWAY PAVEMENT, A COVER AS MANUFACTURED BY MCDONALD 74M1A SERIES WITH AN 8" OPENING FRAME AND COVER OR APPROVED EQUAL SHALL BE INSTALLED.
6. IF RADIUS IS INSTALLED OR EXISTING CURB IS NOT SURMOUNTABLE, SAWCUT AND REMOVE ALL EXISTING CURB IN FRONT OF DRIVEWAY FROM RADIUS TO RADIUS.
7. IF RADIUS IS INSTALLED, A MINIMUM 3' RADIUS IS REQUIRED.



## RESIDENTIAL CONCRETE DRIVEWAY ENTRANCES WITH CURBS

REVISED: 2-24

ENGINEERING DEPARTMENT

PLATE NO.:

**5208A**