

EXISTING PLAN SYMBOLS

- PROPERTY LINES/RIGHT-OF-WAY
- UTILITY EASEMENT
- TREE LINE
- SIGN
- DECIDUOUS TREE
- SHRUB
- CONIFEROUS TREE

EXISTING UTILITY SYMBOLS

- FIBER OPTIC LINE
- GAS LINE
- COMMUNICATION LINE
- ELECTRIC POWER LINE
- WATER MAIN
- SANITARY SEWER
- STORM SEWER
- COMMUNICATIONS PEDESTAL
- POWER POLE
- ELECTRIC BOX
- CATCH BASIN
- STORM APRON
- STORM SEWER MANHOLE
- GATE VALVE
- HYDRANT
- SANITARY SEWER MANHOLE

2022 POND MAINTENANCE PROJECT

CITY OF CHANHASSEN, MN

CITY PROJECT NO. 22-05

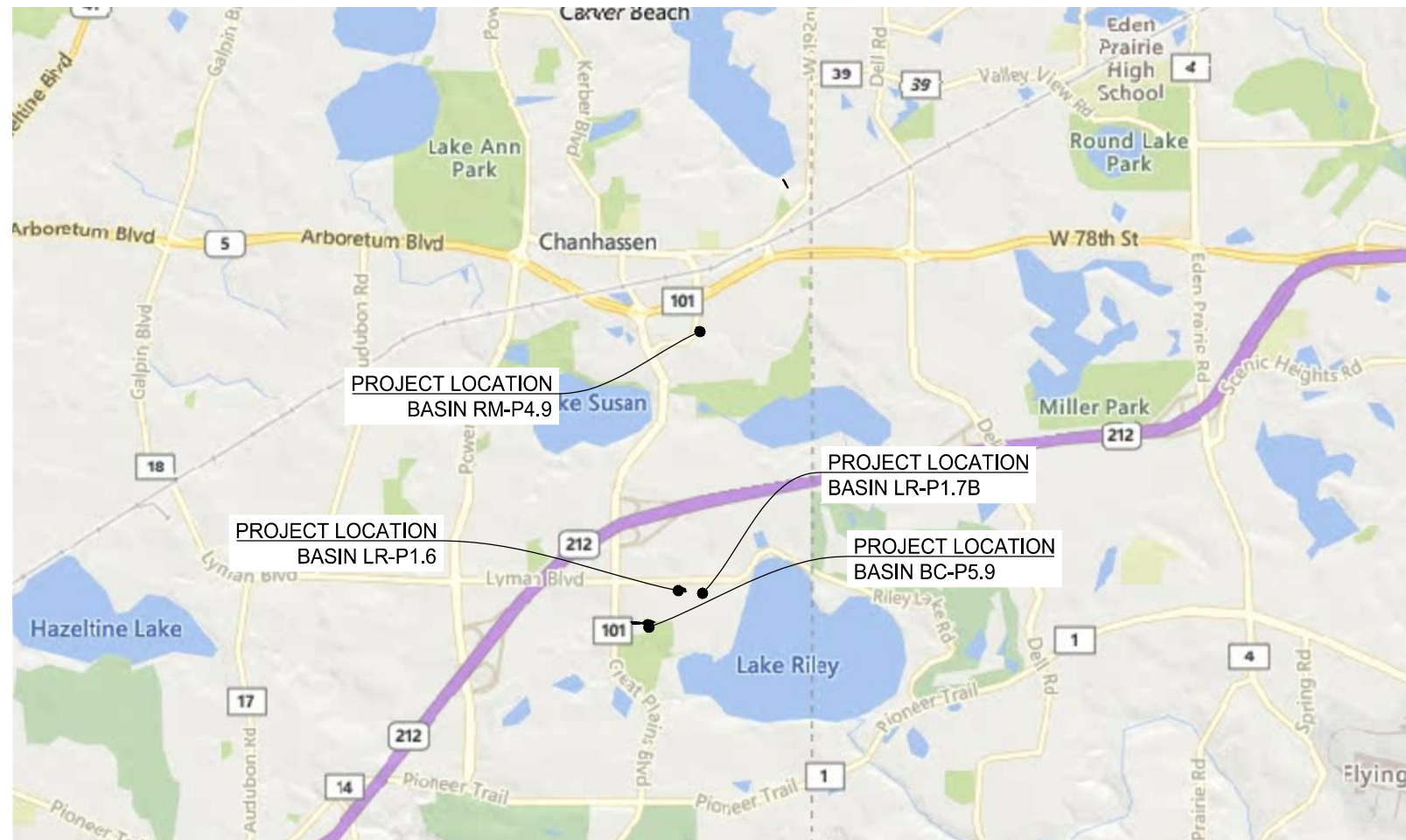
GOVERNING SPECIFICATIONS

THE 2020 EDITION OF THE MINNESOTA DEPARTMENT OF TRANSPORTATION "STANDARD SPECIFICATIONS FOR CONSTRUCTION" AND THE 2022 CITY OF CHANHASSEN STANDARD SPECIFICATIONS AND DETAIL PLATES SHALL GOVERN.

ALL TRAFFIC CONTROL DEVICES SHALL CONFORM TO THE LATEST EDITION OF THE MINNESOTA MANUAL ON UNIFORM TRAFFIC CONTROL DEVICES, INCLUDING THE LATEST FIELD MANUAL FOR TEMPORARY TRAFFIC CONTROL ZONE LAYOUTS.

PLAN SET INDEX

SHEET NO.	SHEET TITLE
1	TITLE SHEET
2	REMOVAL PLANS
3,5-7	GRADING PLANS
4	BASIN BC-P5.9 ACCESS
8-11	EROSION CONTROL PLANS
12	MISCELLANEOUS DETAILS



PROJECT LOCATION MAP



THIS PLAN SET CONTAINS 12 SHEETS

THIS PLAN SET HAS BEEN PREPARED FOR:

CITY OF CHANHASSEN
7700 MARKET BOULEVARD
CHANHASSEN, MN 55317
(952) 227-1100

ALL APPLICABLE FEDERAL, STATE, AND LOCAL LAWS AND ORDINANCES WILL BE COMPLIED WITH IN THE CONSTRUCTION OF THIS PROJECT.

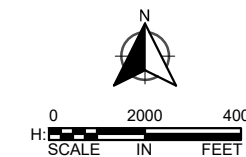


I HEREBY CERTIFY THAT THIS PLAN WAS PREPARED BY ME OR UNDER MY DIRECT SUPERVISION, AND THAT I AM A DULY LICENSED PROFESSIONAL ENGINEER UNDER THE LAWS OF THE STATE OF MINNESOTA.

William C. Alms
WILLIAM ALMS, P.E.

DATE: 11/22/2022

LICENSE NUMBER: 54301



PLAN REVISIONS		
DATE	SHEET NO.	APPROVED BY

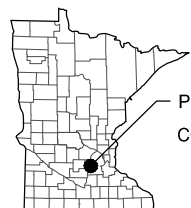
UTILITY INFORMATION

THE SUBSURFACE UTILITY INFORMATION IN THIS PLAN IS UTILITY QUALITY LEVEL D. THIS UTILITY QUALITY LEVEL WAS DETERMINED ACCORDING TO THE GUIDELINES OF CI/ASCE 38-02, ENTITLED "STANDARD GUIDELINES FOR THE COLLECTION AND DEPICTION OF EXISTING SUBSURFACE UTILITY DATA."

GOPHER ONE CALL TICKET NUMBER: 223001257, 223001402, 223001468, 223001568, 223001622, 223001837

EXCAVATION NOTICE SYSTEM

A CALL TO GOPHER STATE ONE (651-454-0002) IS REQUIRED A MINIMUM OF 48 HOURS PRIOR TO PERFORMING ANY EXCAVATION.



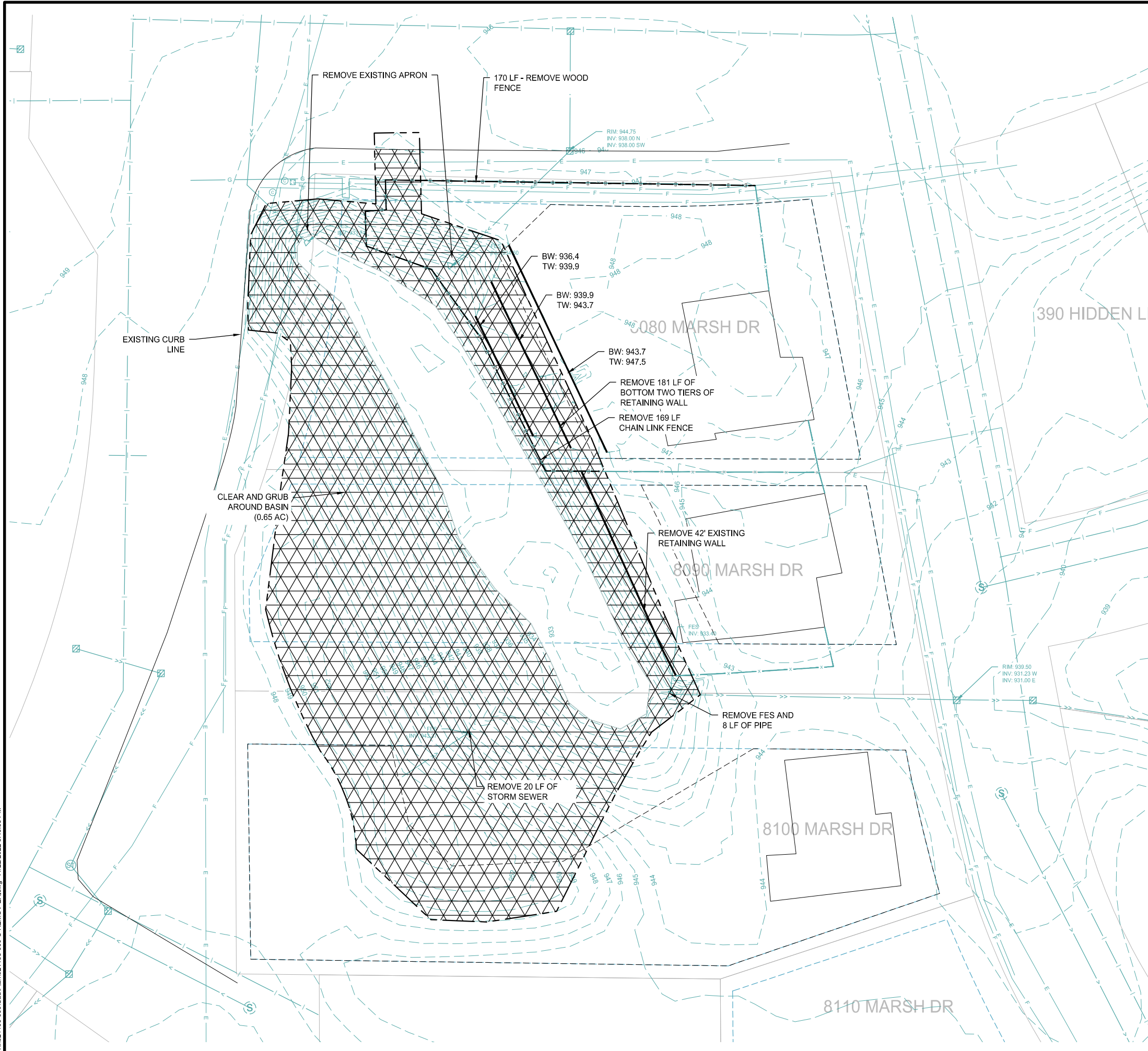
PROJECT LOCATION
COUNTY: CARVER

WSB PROJ. NO. 021196-000
CITY PROJ. NO. 22-05

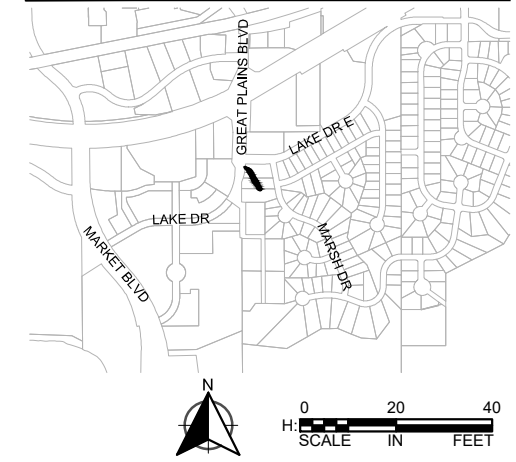
SHEET
1
OF
12

K:\021196-000\Cadd\Plan\021196-000-C-TITLE-PLAN.dwg 11/22/2022 3:43:31 PM

K:\021196-000\Cad\Plan\021196-000-C-REMOVAL.dwg 11/22/2022 3:43:55 PM



LOCATION



- CONSTRUCTION LIMITS
- ACCESS ROUTE
- FIELDSTONE BOULDER TOE STABILIZATION
- PROPERTY LINE
- DRAINAGE AND UTILITY EASEMENT (PER PLAT)
- PROPOSED EASEMENT
- EASEMENT CENTERLINE
- UNDERLYING LOT LINE
- GAS LINE
- FIBER OPTION LINE
- ELECTRICAL LINE
- SANITARY SEWER PIPE
- STORM SEWER PIPE
- DRAIN TILE
- WATERMAIN PIPE
- FENCE REMOVAL
- 920 CONTOUR - MAJOR - EXISTING
- 922 CONTOUR - MINOR - EXISTING
- 920 CONTOUR - MAJOR - PROPOSED
- 922 CONTOUR - MINOR - PROPOSED
- CATCH BASIN
- STORM SEWER MANHOLE
- SANITARY SEWER MANHOLE
- FLARED END SECTION
- SOIL BORINGS
- CLEAR AND GRUB

GENERAL CONSTRUCTION NOTES

1. CONTRACTOR RESPONSIBLE FOR THE DAMAGE TO STREETS, PARKING LOTS, CONCRETE CURB AND GUTTER, TRAIL, AND TREES NOT SHOWN FOR REMOVAL.
2. AT A MINIMUM, DAILY STREET SWEEPING REQUIRED DURING HAULING OPERATIONS, MORE OFTEN AS NEEDED OR DIRECTED BY THE ENGINEER.
3. ALL STOCKPILES MUST HAVE DOWN GRADIENT PERIMETER SEDIMENT CONTROL IMPLEMENTED AND MAINTAINED AT ALL TIMES. STOCKPILES TO RECEIVE TEMPORARY STABILIZATION IF UNWORKED FOR 7 DAYS.
4. DEWATERING/DEICING TO TAKE PLACE PRIOR TO EXCAVATION. ICE IS TO BE STOCKPILED ON SITE AND PUT BACK IN POND FOLLOWING THE EXCAVATION. DEWATERING PLANS MUST BE SUBMITTED AND APPROVED BY THE PROJECT ENGINEER 10 DAYS PRIOR TO PUMPING. PLANS MUST INCLUDE OPERATIONS FOR PREVENTING THE DISCHARGE OF TURBID WATER, AND MUST INCLUDE METHODS FOR CONTROLLING EROSION AND SCOUR.
5. CONTRACTOR SHALL PERFORM ALL DEWATERING AND EXCAVATION ONSITE AND OFF OF ROADWAY, AND LOAD AND HAUL OUT USING ACCESS ROUTE.
6. CONTRACTOR TO GRADE AROUND EXISTING STORM SEWER STRUCTURES AS DIRECTED BY THE ENGINEER.
7. CONTRACTOR TO COORDINATE ACCESS LIMITS WITH THE ENGINEER IN THE FIELD.
8. EXISTING POND CONTOURS DEVELOPED FROM PRE-DESIGN SURVEY.
9. VEGETATION AND TREES LESS THAN 12" IN DIAMETER REMOVED FOR ACCESS OR IN AREA AS SHOWN ON THE PLANS WILL BE PAID FOR BY THE ACRE. ALL TREES REMOVED 12" IN DIAMETER OR LARGER WILL BE PAID FOR BY EACH WHERE SHOWN ON THE PLANS AND/OR WHERE DIRECTED BY THE ENGINEER.
10. THE CONTRACTOR SHALL SUPPLY THE CITY WITH TRAFFIC CONTROL AND STAGING PLANS PRIOR TO ANY CONSTRUCTION FOR CITY APPROVAL.
11. WORK ASSOCIATED WITH PROTECTING AND/OR REMOVING AND REINSTALLING FENCES, STREET SIGNS, LAWN IRRIGATION SYSTEMS AND OTHER ITEMS SHALL BE CONSIDERED INCIDENTAL TO THE PROJECT.

REVISIONS

NO.	DATE	DESCRIPTION

I HEREBY CERTIFY THAT THIS PLAN, SPECIFICATION, OR REPORT WAS PREPARED BY ME OR UNDER MY DIRECT SUPERVISION AND THAT I AM A DULY LICENSED PROFESSIONAL ENGINEER UNDER THE LAWS OF THE STATE OF MINNESOTA.

William C. Alms
WILLIAM ALMS

DATE: 11/22/2022 LIC. NO.: 54301

EXISTING AND REMOVALS BASIN RM-P4.9

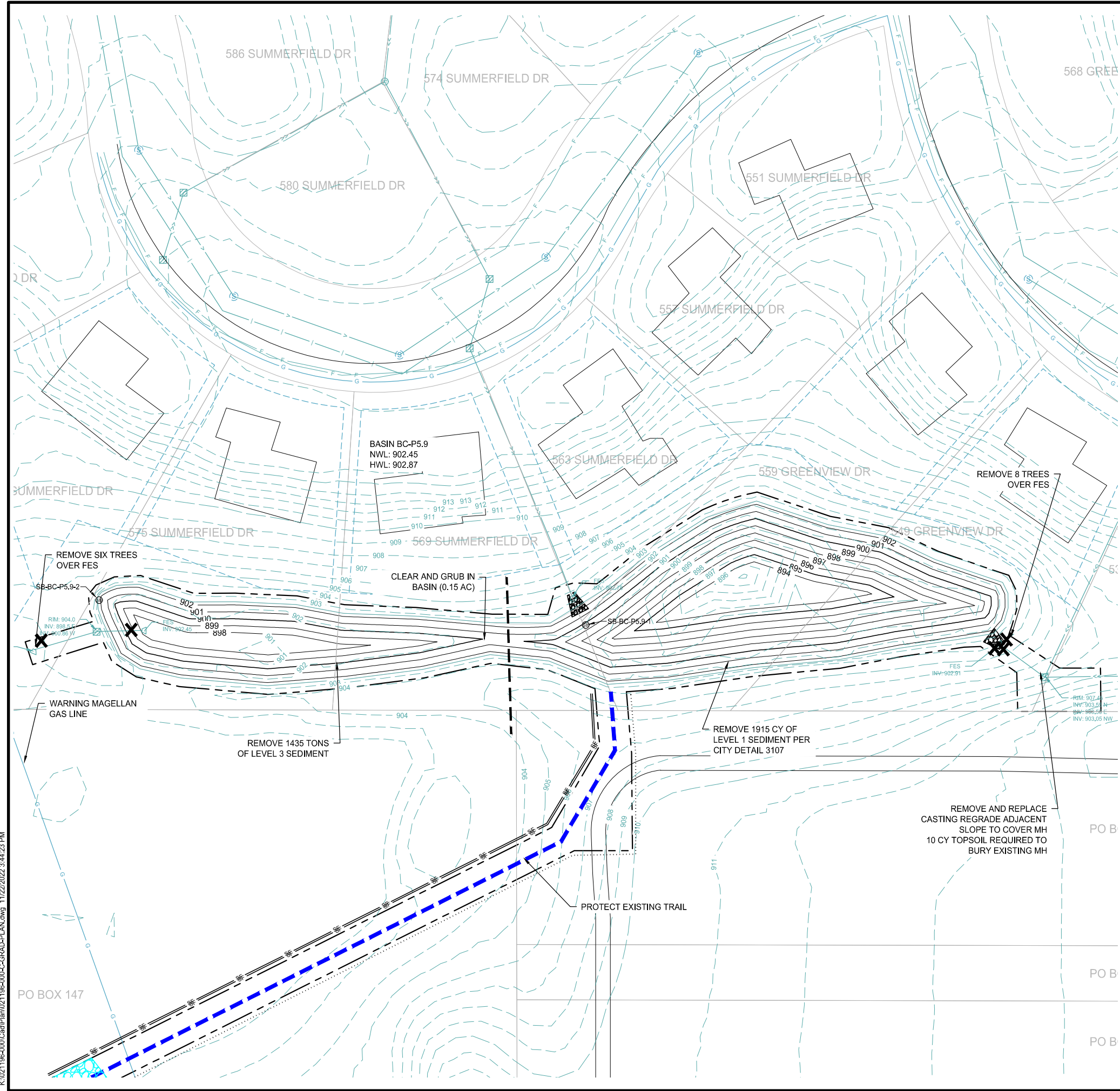
2022 POND MAINTENANCE PROJECT
CITY OF CHANHASSEN, MN

CLIENT PROJECT NO.
22-05

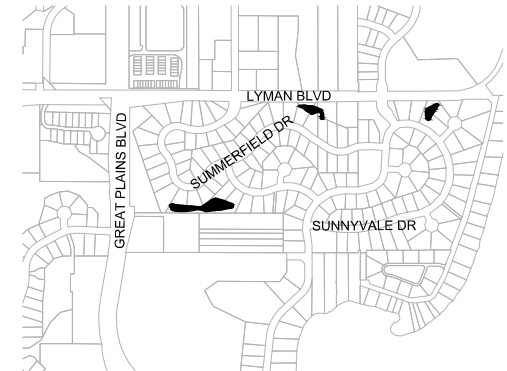
WSB PROJECT NO.
021196-000

SHEET

2 OF 12



LOCATION



- CONSTRUCTION LIMITS
- ACCESS ROUTE
- FIELDSTONE BOULDER TOE STABILIZATION
- PROPERTY LINE
- DRAINAGE AND UTILITY EASEMENT (PER PLAT)
- PROPOSED EASEMENT
- EASEMENT CENTERLINE
- UNDERLYING LOT LINE
- G GAS LINE
- F FIBER OPTION LINE
- E ELECTRICAL LINE
- S SANITARY SEWER PIPE
- SS STORM SEWER PIPE
- DTL DRAINTILE PIPE
- W WATERMAIN PIPE
- FENCE REMOVAL
- 920 CONTOUR - MAJOR - EXISTING
- 922 CONTOUR - MINOR - EXISTING
- 920 CONTOUR - MAJOR - PROPOSED
- 922 CONTOUR - MINOR - PROPOSED
- CB CATCH BASIN
- SMH STORM SEWER MANHOLE
- SMH SANITARY SEWER MANHOLE
- FLS FLARED END SECTION
- SB SOIL BORINGS
- X CLEAR AND GRUB

GENERAL CONSTRUCTION NOTES

1. CONTRACTOR RESPONSIBLE FOR THE DAMAGE TO STREETS, PARKING LOTS, CONCRETE CURB AND GUTTER, TRAIL, AND TREES NOT SHOWN FOR REMOVAL.
2. AT A MINIMUM, DAILY STREET SWEEPING REQUIRED DURING HAULING OPERATIONS, MORE OFTEN AS NEEDED OR DIRECTED BY THE ENGINEER. ALL STOCKPILES MUST HAVE DOWN GRADIENT PERIMETER SEDIMENT CONTROL IMPLEMENTED AND MAINTAINED AT ALL TIMES. STOCKPILES TO RECEIVE TEMPORARY STABILIZATION IF UNWORKED FOR 7 DAYS.
3. DEWATERING/DEICING TO TAKE PLACE PRIOR TO EXCAVATION AND SHALL BE COMPLETED BY DECEMBER 31, 2022 OR AN ALTERNATE DATE AS APPROVED BY ENGINEER. ICE IS TO BE STOCKPILED ON SITE AND PUT BACK IN POND FOLLOWING THE EXCAVATION AND IS INCIDENTAL TO THE DEWATERING PAY ITEM. DEWATERING PLANS MUST BE SUBMITTED AND APPROVED BY THE PROJECT ENGINEER 10 DAYS PRIOR TO PUMPING. PLANS MUST INCLUDE OPERATIONS FOR PREVENTING THE DISCHARGE OF TURBID WATER, AND MUST INCLUDE METHODS FOR CONTROLLING EROSION AND SCOUR.
4. CONTRACTOR SHALL PERFORM ALL DEWATERING AND EXCAVATION ONSITE AND OFF OF ROADWAY, AND LOAD AND HAUL OUT USING ACCESS ROUTE.
5. CONTRACTOR TO GRADE AROUND EXISTING STORM SEWER STRUCTURES AS DIRECTED BY THE ENGINEER.
6. CONTRACTOR TO COORDINATE ACCESS LIMITS WITH THE ENGINEER IN THE FIELD.
7. EXISTING POND CONTOURS DEVELOPED FROM PRE-DESIGN SURVEY. VEGETATION AND TREES LESS THAN 12" IN DIAMETER REMOVED FOR ACCESS OR IN AREA AS SHOWN ON THE PLANS WILL BE PAID FOR BY THE ACRE. ALL TREES REMOVED 12" IN DIAMETER OR LARGER WILL BE PAID FOR BY EACH WHERE SHOWN ON THE PLANS AND/OR WHERE DIRECTED BY THE ENGINEER.
8. THE CONTRACTOR SHALL SUPPLY THE CITY WITH TRAFFIC CONTROL AND STAGING PLANS PRIOR TO ANY CONSTRUCTION FOR CITY APPROVAL.
9. WORK ASSOCIATED WITH PROTECTING AND/OR REMOVING AND REINSTALLING FENCES, STREET SIGNS, LAWN IRRIGATION SYSTEMS AND OTHER ITEMS SHALL BE CONSIDERED INCIDENTAL TO THE PROJECT.
10. ELECTRONIC COPIES OF CAD GRADING PLANS WILL BE PROVIDED TO THE CONTRACTOR AND MACHINE CONTROL OR OTHER MEANS APPROVED BY THE ENGINEER SHALL BE USED TO GRAD TO PLANNED ELEVATIONS. IF NEEDED, ONE POST CONSTRUCTION SURVEY WILL BE COMPLETED AFTER GRADING; IF ADDITIONAL POST CONSTRUCTION SURVEY IS NEEDED TO VERIFY, GRADING COST WILL BE PASSED ALONG TO CONTRACTOR.

NO.	DATE	DESCRIPTION

REVISIONS

I HEREBY CERTIFY THAT THIS PLAN, SPECIFICATION, OR REPORT WAS PREPARED BY ME OR UNDER MY DIRECT SUPERVISION AND THAT I AM A DULY LICENSED PROFESSIONAL ENGINEER UNDER THE LAWS OF THE STATE OF MINNESOTA.

William C. Alms
 WILLIAM ALMS
 DATE: 11/22/2022 LIC. NO.: 54301

GRAD PLAN
 BASIN BC-P5.9

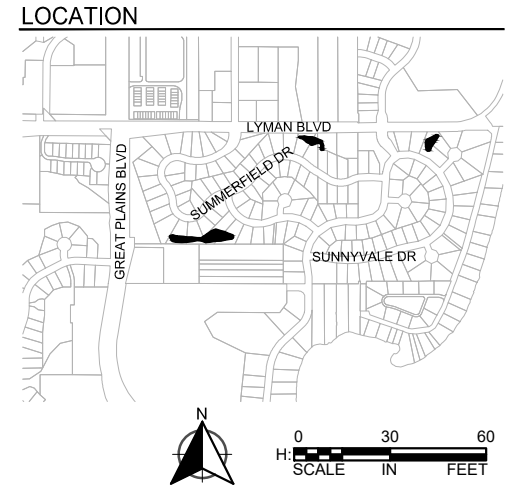
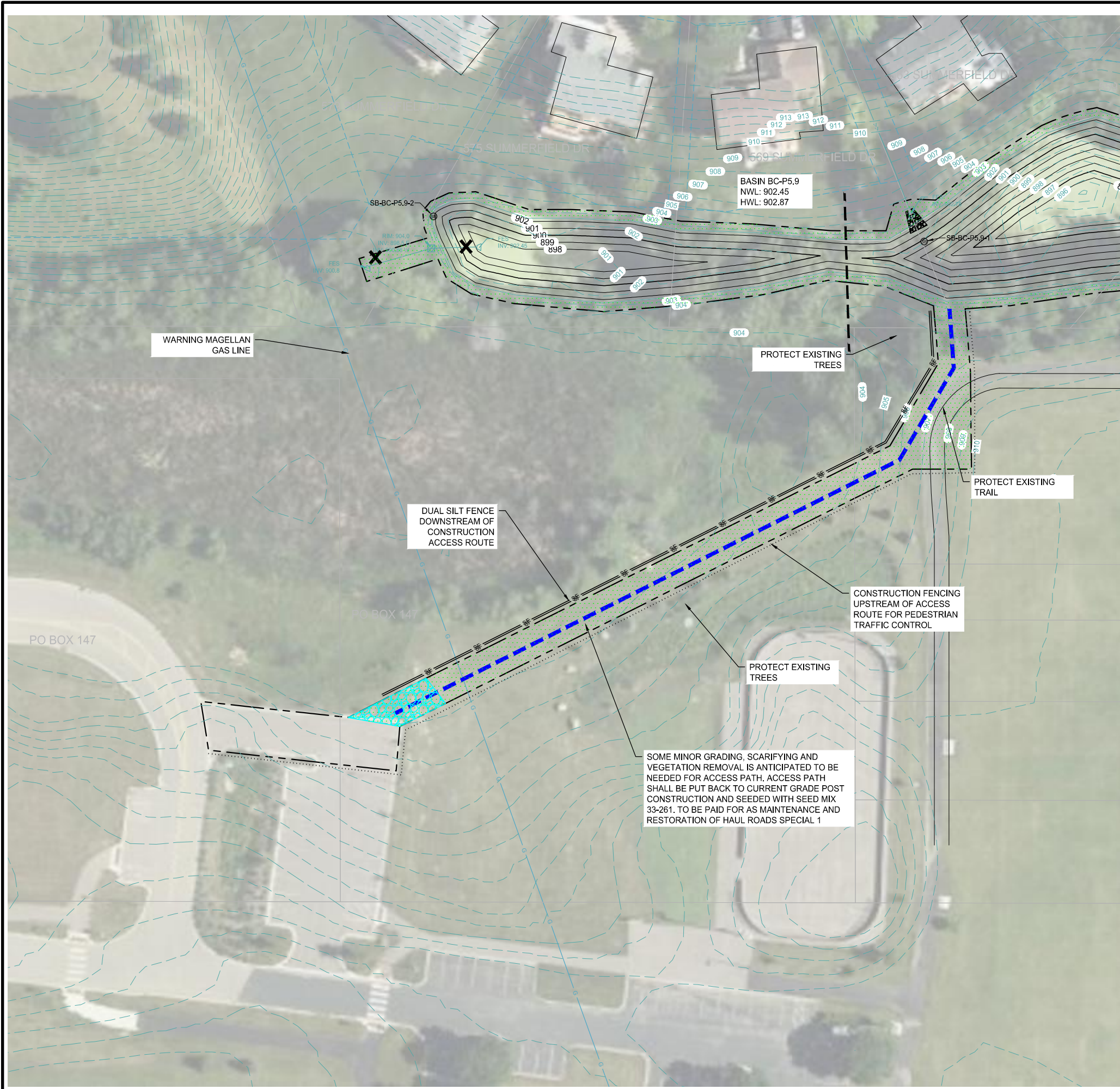
2022 POND MAINTENANCE PROJECT
 CITY OF CHANHASSEN, MN

CLIENT PROJECT NO.
 22-05

WSB PROJECT NO.
 021196-000

SHEET
 3 OF 12

K:\021196-000\Cad\Plan\021196-000-C-GRAD-PLAN.dwg 11/22/2022 3:44:23 PM



- CONSTRUCTION LIMITS
- ACCESS ROUTE
- FIELDSTONE BOULDER TOE STABILIZATION
- PROPERTY LINE
- DRAINAGE AND UTILITY EASEMENT (PER PLAT)
- PROPOSED EASEMENT
- EASEMENT CENTERLINE
- UNDERLYING LOT LINE
- G GAS LINE
- F FIBER OPTIC LINE
- E ELECTRICAL LINE
- S SANITARY SEWER PIPE
- SS STORM SEWER PIPE
- DTL DRAINTILE PIPE
- W WATERMAIN PIPE
- FENCE REMOVAL
- 920 CONTOUR - MAJOR - EXISTING
- 922 CONTOUR - MINOR - EXISTING
- 922 CONTOUR - MAJOR - PROPOSED
- 922 CONTOUR - MINOR - PROPOSED
- CB CATCH BASIN
- SM STORM SEWER MANHOLE
- SSM SANITARY SEWER MANHOLE
- FLS FLARED END SECTION
- SB SOIL BORINGS
- X CLEAR AND GRUB

GENERAL CONSTRUCTION NOTES

1. CONTRACTOR RESPONSIBLE FOR THE DAMAGE TO STREETS, PARKING LOTS, CONCRETE CURB AND GUTTER, TRAIL, AND TREES NOT SHOWN FOR REMOVAL.
2. AT A MINIMUM, DAILY STREET SWEEPING REQUIRED DURING HAULING OPERATIONS, MORE OFTEN AS NEEDED OR DIRECTED BY THE ENGINEER.
3. ALL STOCKPILES MUST HAVE DOWN GRADIENT PERIMETER SEDIMENT CONTROL IMPLEMENTED AND MAINTAINED AT ALL TIMES. STOCKPILES TO RECEIVE TEMPORARY STABILIZATION IF UNWORKED FOR 7 DAYS
4. DEWATERING/DEICING TO TAKE PLACE PRIOR TO EXCAVATION AND SHALL BE COMPLETED BY DECEMBER 31, 2022 OR AN ALTERNATE DATE AS APPROVED BY ENGINEER. ICE IS TO BE STOCKPILED ON SITE AND PUT BACK IN POND FOLLOWING THE EXCAVATION AND IS INCIDENTAL TO THE DEWATERING PAY ITEM. DEWATERING PLANS MUST BE SUBMITTED AND APPROVED BY THE PROJECT ENGINEER 10 DAYS PRIOR TO PUMPING. PLANS MUST INCLUDE OPERATIONS FOR PREVENTING THE DISCHARGE OF TURBID WATER, AND MUST INCLUDE METHODS FOR CONTROLLING EROSION AND SCOUR.
5. CONTRACTOR SHALL PERFORM ALL DEWATERING AND EXCAVATION ONSITE AND OFF OF ROADWAY, AND LOAD AND HAUL OUT USING ACCESS ROUTE.
6. CONTRACTOR TO GRADE AROUND EXISTING STORM SEWER STRUCTURES AS DIRECTED BY THE ENGINEER.
7. CONTRACTOR TO COORDINATE ACCESS LIMITS WITH THE ENGINEER IN THE FIELD.
8. EXISTING POND CONTOURS DEVELOPED FROM PRE-DESIGN SURVEY.
9. VEGETATION AND TREES LESS THAN 6" IN DIAMETER REMOVED FOR ACCESS OR IN AREA AS SHOWN ON THE PLANS WILL BE PAID FOR BY THE ACRE. ALL TREES REMOVED 6" IN DIAMETER OR LARGER WILL BE PAID FOR BY EACH WHERE SHOWN ON THE PLANS AND/OR WHERE DIRECTED BY THE ENGINEER.
10. THE CONTRACTOR SHALL SUPPLY THE CITY WITH TRAFFIC CONTROL AND STAGING PLANS PRIOR TO ANY CONSTRUCTION FOR CITY APPROVAL.
11. WORK ASSOCIATED WITH PROTECTING AND/OR REMOVING AND REINSTALLING FENCES, STREET SIGNS, LAWN IRRIGATION SYSTEMS AND OTHER ITEMS SHALL BE CONSIDERED INCIDENTAL TO THE PROJECT.
12. ELECTRONIC COPIES OF CAD GRADING PLANS WILL BE PROVIDED TO THE CONTRACTOR AND MACHINE CONTROL OR OTHER MEANS APPROVED BY THE ENGINEER SHALL BE USED TO GRAD TO PLANNED ELEVATIONS. IF NEEDED, ONE POST CONSTRUCTION SURVEY WILL BE COMPLETED AFTER GRADING; IF ADDITIONAL POST CONSTRUCTION SURVEY IS NEEDED TO VERIFY, GRADING COST WILL BE PASSED ALONG TO CONTRACTOR.

wsb

SCALE: AS SHOWN
PLAN BY: BA

DESIGN BY: SML
CHECK BY: KJF

REVISIONS	
NO.	DESCRIPTION

I HEREBY CERTIFY THAT THIS PLAN, SPECIFICATION, OR REPORT WAS PREPARED BY ME OR UNDER MY DIRECT SUPERVISION AND THAT I AM A DULY LICENSED PROFESSIONAL ENGINEER UNDER THE LAWS OF THE STATE OF MINNESOTA.

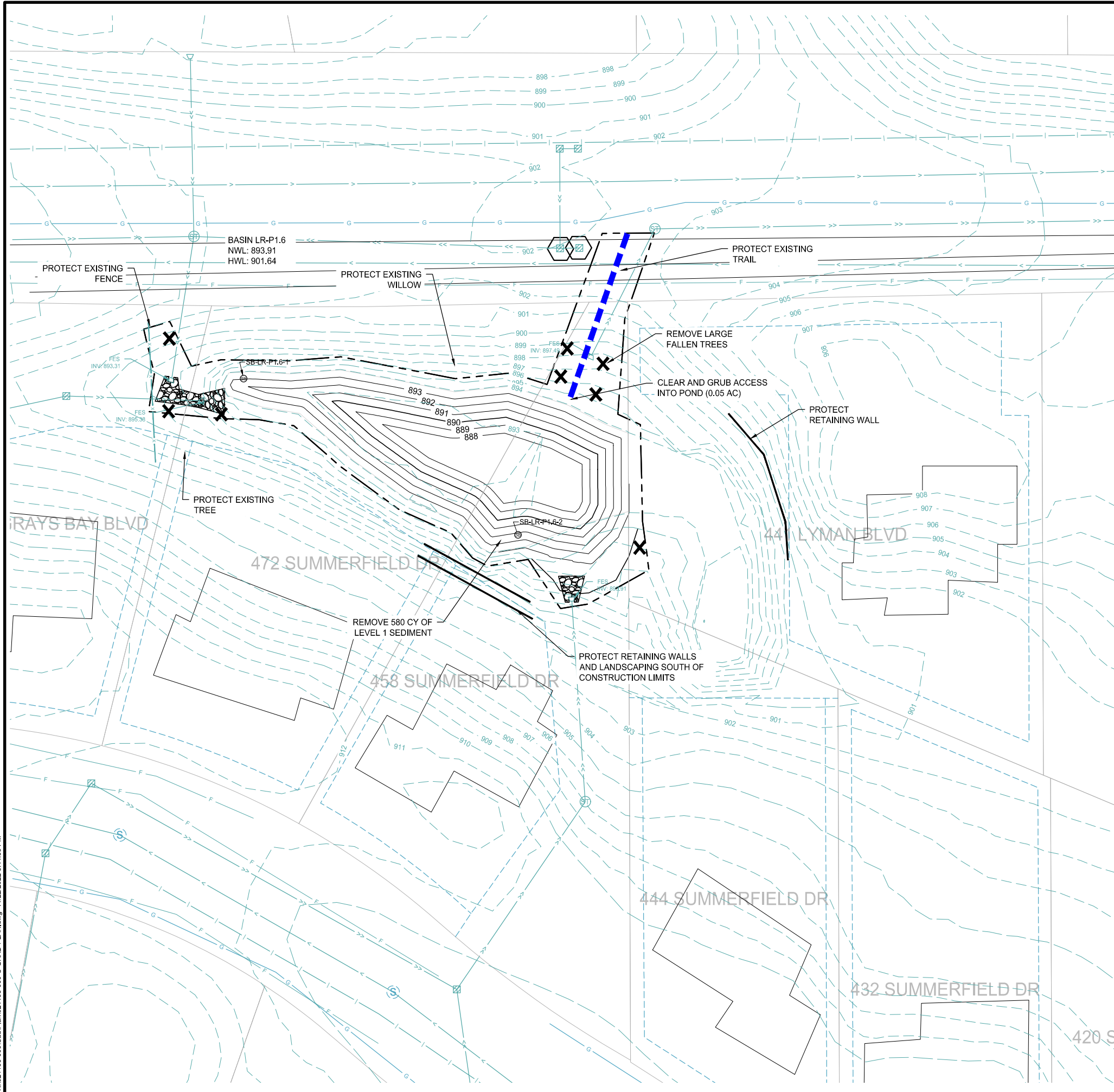
William C. Alms
WILLIAM ALMS
DATE: 11/22/2022 LIC. NO.: 54301

**GRAD PLAN
BASIN BC-P5.9
ACCESS**

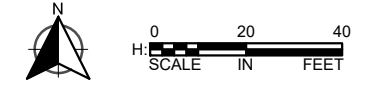
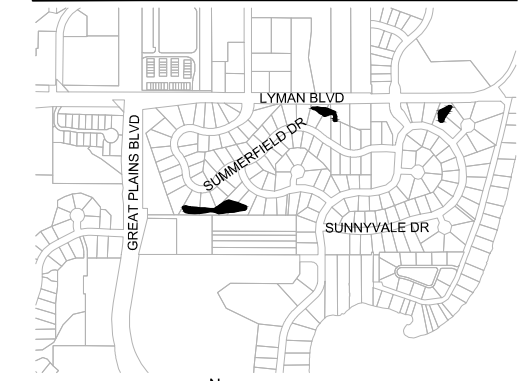
**2022 POND MAINTENANCE PROJECT
CITY OF CHANHASSEN, MN**

K:\021196-000\Cad\Plan\021196-000-C-GRAD-PLAN.dwg 11/22/2022 3:44:38 PM

K:\021196-000\Cad\PIPlan\021196-000-C-GRAD-PLAN.dwg 11/22/2022 3:44:53 PM




LOCATION



- CONSTRUCTION LIMITS
- ACCESS ROUTE
- FIELDSTONE BOULDER TOE STABILIZATION
- PROPERTY LINE
- DRAINAGE AND UTILITY EASEMENT (PER PLAT)
- PROPOSED EASEMENT
- EASEMENT CENTERLINE
- UNDERLYING LOT LINE
- G GAS LINE
- F FIBER OPTIC LINE
- E ELECTRICAL LINE
- S SANITARY SEWER PIPE
- SS STORM SEWER PIPE
- DTL DRAIN TILE PIPE
- W WATERMAIN PIPE
- FENCE REMOVAL
- 920 CONTOUR - MAJOR - EXISTING
- 922 CONTOUR - MINOR - EXISTING
- 920 CONTOUR - MAJOR - PROPOSED
- 922 CONTOUR - MINOR - PROPOSED
- CB CATCH BASIN
- SMH STORM SEWER MANHOLE
- SSMH SANITARY SEWER MANHOLE
- FE FLARED END SECTION
- SB SOIL BORINGS
- X CLEAR AND GRUB

GENERAL CONSTRUCTION NOTES

1. CONTRACTOR RESPONSIBLE FOR THE DAMAGE TO STREETS, PARKING LOTS, CONCRETE CURB AND GUTTER, TRAIL, AND TREES NOT SHOWN FOR REMOVAL.
2. AT A MINIMUM, DAILY STREET SWEEPING REQUIRED DURING HAULING OPERATIONS, MORE OFTEN AS NEEDED OR DIRECTED BY THE ENGINEER. ALL STOCKPILES MUST HAVE DOWN GRADIENT PERIMETER SEDIMENT CONTROL IMPLEMENTED AND MAINTAINED AT ALL TIMES. STOCKPILES TO RECEIVE TEMPORARY STABILIZATION IF UNWORKED FOR 7 DAYS.
3. DEWATERING/DEICING TO TAKE PLACE PRIOR TO EXCAVATION AND SHALL BE COMPLETED BY DECEMBER 31, 2022 OR AN ALTERNATE DATE AS APPROVED BY ENGINEER. ICE IS TO BE STOCKPILED ON SITE AND PUT BACK IN POND FOLLOWING THE EXCAVATION AND IS INCIDENTAL TO THE DEWATERING PAY ITEM. DEWATERING PLANS MUST BE SUBMITTED AND APPROVED BY THE PROJECT ENGINEER 10 DAYS PRIOR TO PUMPING. PLANS MUST INCLUDE OPERATIONS FOR PREVENTING THE DISCHARGE OF TURBID WATER, AND MUST INCLUDE METHODS FOR CONTROLLING EROSION AND SCOUR.
4. CONTRACTOR SHALL PERFORM ALL DEWATERING AND EXCAVATION ONSITE AND OFF OF ROADWAY, AND LOAD AND HAUL OUT USING ACCESS ROUTE.
5. CONTRACTOR TO GRADE AROUND EXISTING STORM SEWER STRUCTURES AS DIRECTED BY THE ENGINEER.
6. CONTRACTOR TO COORDINATE ACCESS LIMITS WITH THE ENGINEER IN THE FIELD.
7. EXISTING POND CONTOURS DEVELOPED FROM PRE-DESIGN SURVEY. VEGETATION AND TREES LESS THAN 12" IN DIAMETER REMOVED FOR ACCESS OR IN AREA AS SHOWN ON THE PLANS WILL BE PAID FOR BY THE ACRE. ALL TREES REMOVED 12" IN DIAMETER OR LARGER WILL BE PAID FOR BY EACH WHERE SHOWN ON THE PLANS AND/OR WHERE DIRECTED BY THE ENGINEER.
8. THE CONTRACTOR SHALL SUPPLY THE CITY WITH TRAFFIC CONTROL AND STAGING PLANS PRIOR TO ANY CONSTRUCTION FOR CITY APPROVAL.
9. WORK ASSOCIATED WITH PROTECTING AND/OR REMOVING AND REINSTALLING FENCES, STREET SIGNS, LAWN IRRIGATION SYSTEMS AND OTHER ITEMS SHALL BE CONSIDERED INCIDENTAL TO THE PROJECT.
10. ELECTRONIC COPIES OF CAD GRADING PLANS WILL BE PROVIDED TO THE CONTRACTOR AND MACHINE CONTROL OR OTHER MEANS APPROVED BY THE ENGINEER SHALL BE USED TO GRAD TO PLANNED ELEVATIONS. IF NEEDED, ONE POST CONSTRUCTION SURVEY WILL BE COMPLETED AFTER GRADING; IF ADDITIONAL POST CONSTRUCTION SURVEY IS NEEDED TO VERIFY, GRADING COST WILL BE PASSED ALONG TO CONTRACTOR.

wsb 

SCALE: AS SHOWN
PLAN BY: BA
CHECK BY: KJF

DESIGN BY: SML
CHECK BY: KJF

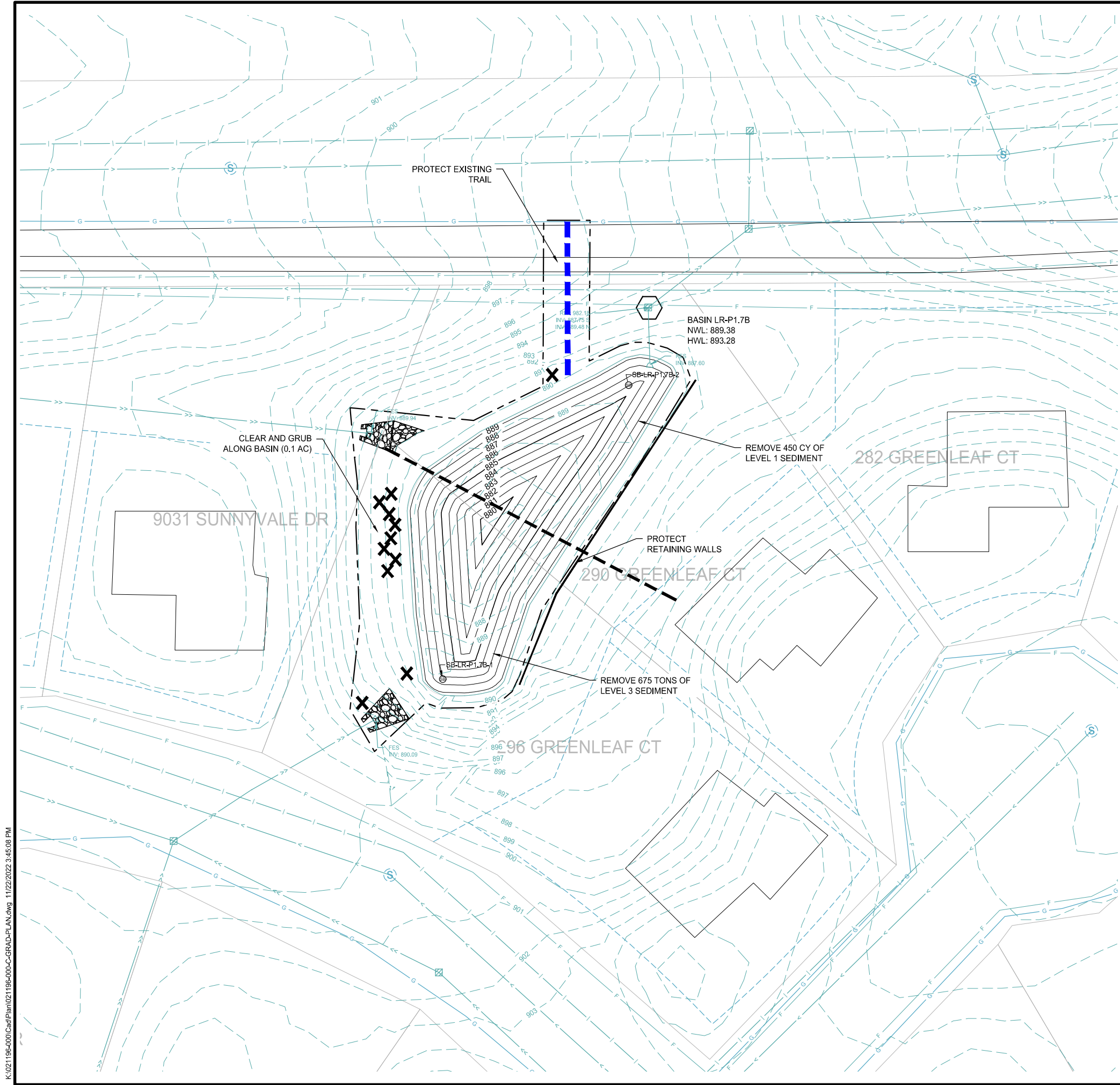
NO.	DATE	DESCRIPTION

I HEREBY CERTIFY THAT THIS PLAN, SPECIFICATION, OR REPORT WAS PREPARED BY ME OR UNDER MY DIRECT SUPERVISION AND THAT I AM A DULY LICENSED PROFESSIONAL ENGINEER UNDER THE LAWS OF THE STATE OF MINNESOTA.

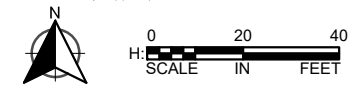
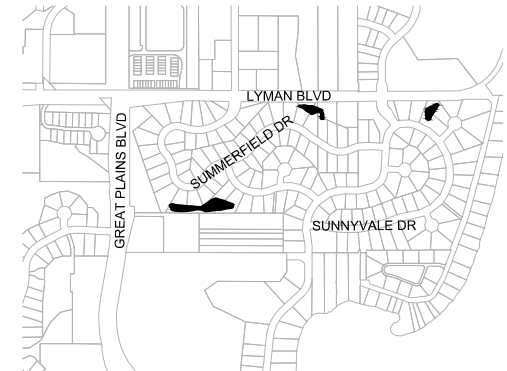
William C. Alms
WILLIAM ALMS
DATE: 11/22/2022 LIC. NO.: 54301

GRAD PLAN
BASIN LR-P1.6

2022 POND MAINTENANCE PROJECT
CITY OF CHANHASSEN, MN



LOCATION



- CONSTRUCTION LIMITS
- ACCESS ROUTE
- FIELDSTONE BOULDER TOE STABILIZATION
- PROPERTY LINE
- DRAINAGE AND UTILITY EASEMENT (PER PLAT)
- PROPOSED EASEMENT
- EASEMENT CENTERLINE
- UNDERLYING LOT LINE
- GAS LINE
- FIBER OPTION LINE
- ELECTRICAL LINE
- SANITARY SEWER PIPE
- STORM SEWER PIPE
- DRAIN TILE PIPE
- WATERMAIN PIPE
- FENCE REMOVAL
- 920 CONTOUR - MAJOR - EXISTING
- 922 CONTOUR - MINOR - EXISTING
- 920 CONTOUR - MAJOR - PROPOSED
- 922 CONTOUR - MINOR - PROPOSED
- CATCH BASIN
- STORM SEWER MANHOLE
- SANITARY SEWER MANHOLE
- FLARED END SECTION
- SOIL BORINGS
- CLEAR AND GRUB

GENERAL CONSTRUCTION NOTES

1. CONTRACTOR RESPONSIBLE FOR THE DAMAGE TO STREETS, PARKING LOTS, CONCRETE CURB AND GUTTER, TRAIL, AND TREES NOT SHOWN FOR REMOVAL.
2. AT A MINIMUM, DAILY STREET SWEEPING REQUIRED DURING HAULING OPERATIONS, MORE OFTEN AS NEEDED OR DIRECTED BY THE ENGINEER.
3. ALL STOCKPILES MUST HAVE DOWN GRADIENT PERIMETER SEDIMENT CONTROL IMPLEMENTED AND MAINTAINED AT ALL TIMES. STOCKPILES TO RECEIVE TEMPORARY STABILIZATION IF UNWORKED FOR 7 DAYS.
4. DEWATERING/DEICING TO TAKE PLACE PRIOR TO EXCAVATION AND SHALL BE COMPLETED BY DECEMBER 31, 2022 OR AN ALTERNATE DATE AS APPROVED BY ENGINEER. ICE IS TO BE STOCKPILED ON SITE AND PUT BACK IN POND FOLLOWING THE EXCAVATION AND IS INCIDENTAL TO THE DEWATERING PAY ITEM. DEWATERING PLANS MUST BE SUBMITTED AND APPROVED BY THE PROJECT ENGINEER 10 DAYS PRIOR TO PUMPING. PLANS MUST INCLUDE OPERATIONS FOR PREVENTING THE DISCHARGE OF TURBID WATER, AND MUST INCLUDE METHODS FOR CONTROLLING EROSION AND SCOUR.
5. CONTRACTOR SHALL PERFORM ALL DEWATERING AND EXCAVATION ONSITE AND OFF OF ROADWAY, AND LOAD AND HAUL OUT USING ACCESS ROUTE.
6. CONTRACTOR TO GRADE AROUND EXISTING STORM SEWER STRUCTURES AS DIRECTED BY THE ENGINEER.
7. CONTRACTOR TO COORDINATE ACCESS LIMITS WITH THE ENGINEER IN THE FIELD.
8. EXISTING POND CONTOURS DEVELOPED FROM PRE-DESIGN SURVEY.
9. VEGETATION AND TREES LESS THAN 6" IN DIAMETER REMOVED FOR ACCESS OR IN AREA AS SHOWN ON THE PLANS WILL BE PAID FOR BY THE ACRE. ALL TREES REMOVED 6" IN DIAMETER OR LARGER WILL BE PAID FOR BY EACH WHERE SHOWN ON THE PLANS AND/OR WHERE DIRECTED BY THE ENGINEER.
10. THE CONTRACTOR SHALL SUPPLY THE CITY WITH TRAFFIC CONTROL AND STAGING PLANS PRIOR TO ANY CONSTRUCTION FOR CITY APPROVAL.
11. WORK ASSOCIATED WITH PROTECTING AND/OR REMOVING AND REINSTALLING FENCES, STREET SIGNS, LAWN IRRIGATION SYSTEMS AND OTHER ITEMS SHALL BE CONSIDERED INCIDENTAL TO THE PROJECT.
12. ELECTRONIC COPIES OF CAD GRADING PLANS WILL BE PROVIDED TO THE CONTRACTOR AND MACHINE CONTROL OR OTHER MEANS APPROVED BY THE ENGINEER SHALL BE USED TO GRAD TO PLANNED ELEVATIONS. IF NEEDED, ONE POST CONSTRUCTION SURVEY WILL BE COMPLETED AFTER GRADING; IF ADDITIONAL POST CONSTRUCTION SURVEY IS NEEDED TO VERIFY, GRADING COST WILL BE PASSED ALONG TO CONTRACTOR.

REVISIONS	
NO.	DESCRIPTION

I HEREBY CERTIFY THAT THIS PLAN, SPECIFICATION, OR REPORT WAS PREPARED BY ME OR UNDER MY DIRECT SUPERVISION AND THAT I AM A DULY LICENSED PROFESSIONAL ENGINEER UNDER THE LAWS OF THE STATE OF MINNESOTA.

William C. Alms
WILLIAM ALMS
DATE: 11/22/2022 LIC. NO.: 54301

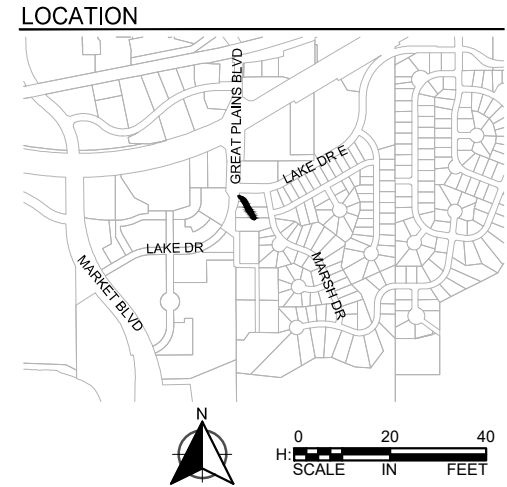
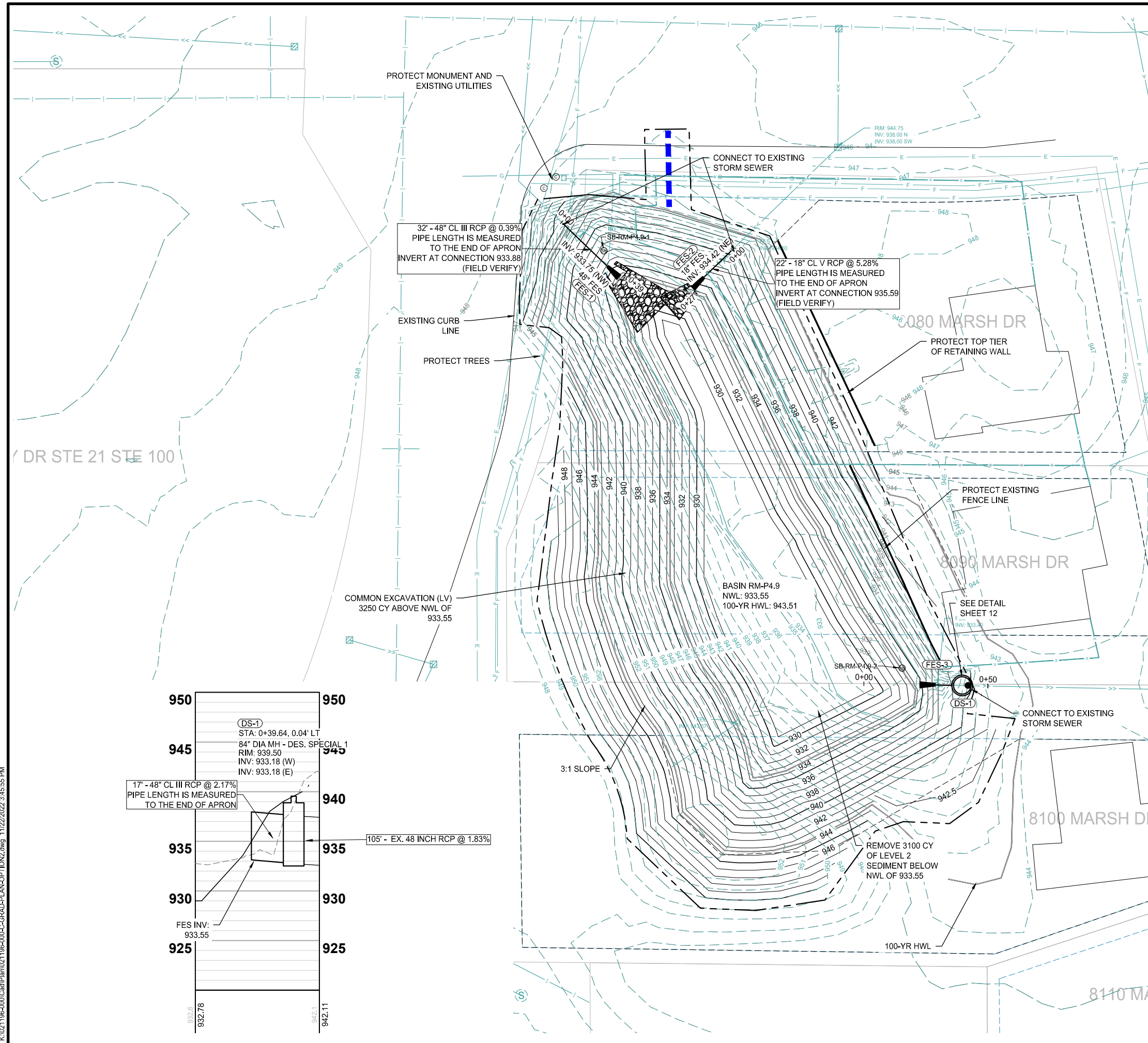
GRAD PLAN
BASIN LR-P1.7B

2022 POND MAINTENANCE PROJECT
CITY OF CHANHASSEN, MN

CLIENT PROJECT NO.
22-05

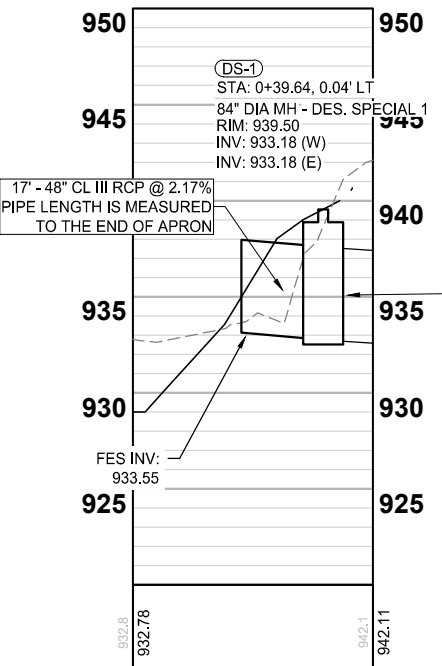
WSB PROJECT NO.
021196-000

SHEET
6 OF 12



- CONSTRUCTION LIMITS
- ACCESS ROUTE
- FIELDSTONE BOULDER TOE STABILIZATION
- PROPERTY LINE
- DRAINAGE AND UTILITY EASEMENT (PER PLAT)
- PROPOSED EASEMENT
- EASEMENT CENTERLINE
- UNDERLYING LOT LINE
- GAS LINE
- FIBER OPTIC LINE
- ELECTRICAL LINE
- SANITARY SEWER PIPE
- STORM SEWER PIPE
- DRAIN TILE PIPE
- WATERMAIN PIPE
- FENCE REMOVAL
- 920 CONTOUR - MAJOR - EXISTING
- 922 CONTOUR - MINOR - EXISTING
- 920 CONTOUR - MAJOR - PROPOSED
- 922 CONTOUR - MINOR - PROPOSED
- CATCH BASIN
- STORM SEWER MANHOLE
- SANITARY SEWER MANHOLE
- FLARED END SECTION
- SOIL BORINGS
- CLEAR AND GRUB

- GENERAL CONSTRUCTION NOTES**
- CONTRACTOR RESPONSIBLE FOR THE DAMAGE TO STREETS, PARKING LOTS, CONCRETE CURB AND GUTTER, TRAIL, AND TREES NOT SHOWN FOR REMOVAL.
 - AT A MINIMUM, DAILY STREET SWEEPING REQUIRED DURING HAULING OPERATIONS, MORE OFTEN AS NEEDED OR DIRECTED BY THE ENGINEER. ALL STOCKPILES MUST HAVE DOWN GRADIENT PERIMETER SEDIMENT CONTROL IMPLEMENTED AND MAINTAINED AT ALL TIMES. STOCKPILES TO RECEIVE TEMPORARY STABILIZATION IF UNWORKED FOR 7 DAYS.
 - DEWATERING/DEICING TO TAKE PLACE PRIOR TO EXCAVATION. ICE IS TO BE STOCKPILED ON SITE AND PUT BACK IN POND FOLLOWING THE EXCAVATION. DEWATERING PLANS MUST BE SUBMITTED AND APPROVED BY THE PROJECT ENGINEER 10 DAYS PRIOR TO PUMPING. PLANS MUST INCLUDE OPERATIONS FOR PREVENTING THE DISCHARGE OF TURBID WATER, AND MUST INCLUDE METHODS FOR CONTROLLING EROSION AND SCOUR.
 - CONTRACTOR SHALL PERFORM ALL DEWATERING AND EXCAVATION ONSITE AND OFF OF ROADWAY, AND LOAD AND HAUL OUT USING ACCESS ROUTE.
 - CONTRACTOR TO GRADE AROUND EXISTING STORM SEWER STRUCTURES AS DIRECTED BY THE ENGINEER.
 - CONTRACTOR TO COORDINATE ACCESS LIMITS WITH THE ENGINEER IN THE FIELD.
 - EXISTING POND CONTOURS DEVELOPED FROM PRE-DESIGN SURVEY. VEGETATION AND TREES LESS THAN 12" IN DIAMETER REMOVED FOR ACCESS OR IN AREA AS SHOWN ON THE PLANS WILL BE PAID FOR BY THE ACRE. ALL TREES REMOVED 12" IN DIAMETER OR LARGER WILL BE PAID FOR BY EACH WHERE SHOWN ON THE PLANS AND/OR WHERE DIRECTED BY THE ENGINEER.
 - THE CONTRACTOR SHALL SUPPLY THE CITY WITH TRAFFIC CONTROL AND STAGING PLANS PRIOR TO ANY CONSTRUCTION FOR CITY APPROVAL.
 - WORK ASSOCIATED WITH PROTECTING AND/OR REMOVING AND REINSTALLING FENCES, STREET SIGNS, LAWN IRRIGATION SYSTEMS AND OTHER ITEMS SHALL BE CONSIDERED INCIDENTAL TO THE PROJECT.



K:\021196-000\Cad\Plan\021196-000-C-GRAD-PLAN-OPTION2.dwg 11/22/2022 3:45:55 PM

NO.	DATE	DESCRIPTION

I HEREBY CERTIFY THAT THIS PLAN, SPECIFICATION, OR REPORT WAS PREPARED BY ME OR UNDER MY DIRECT SUPERVISION AND THAT I AM A DULY LICENSED PROFESSIONAL ENGINEER UNDER THE LAWS OF THE STATE OF MINNESOTA.

William Chanhasen
 WILLIAM CHANHASSEN
 DATE: 11/22/2022 LIC. NO.: 54301

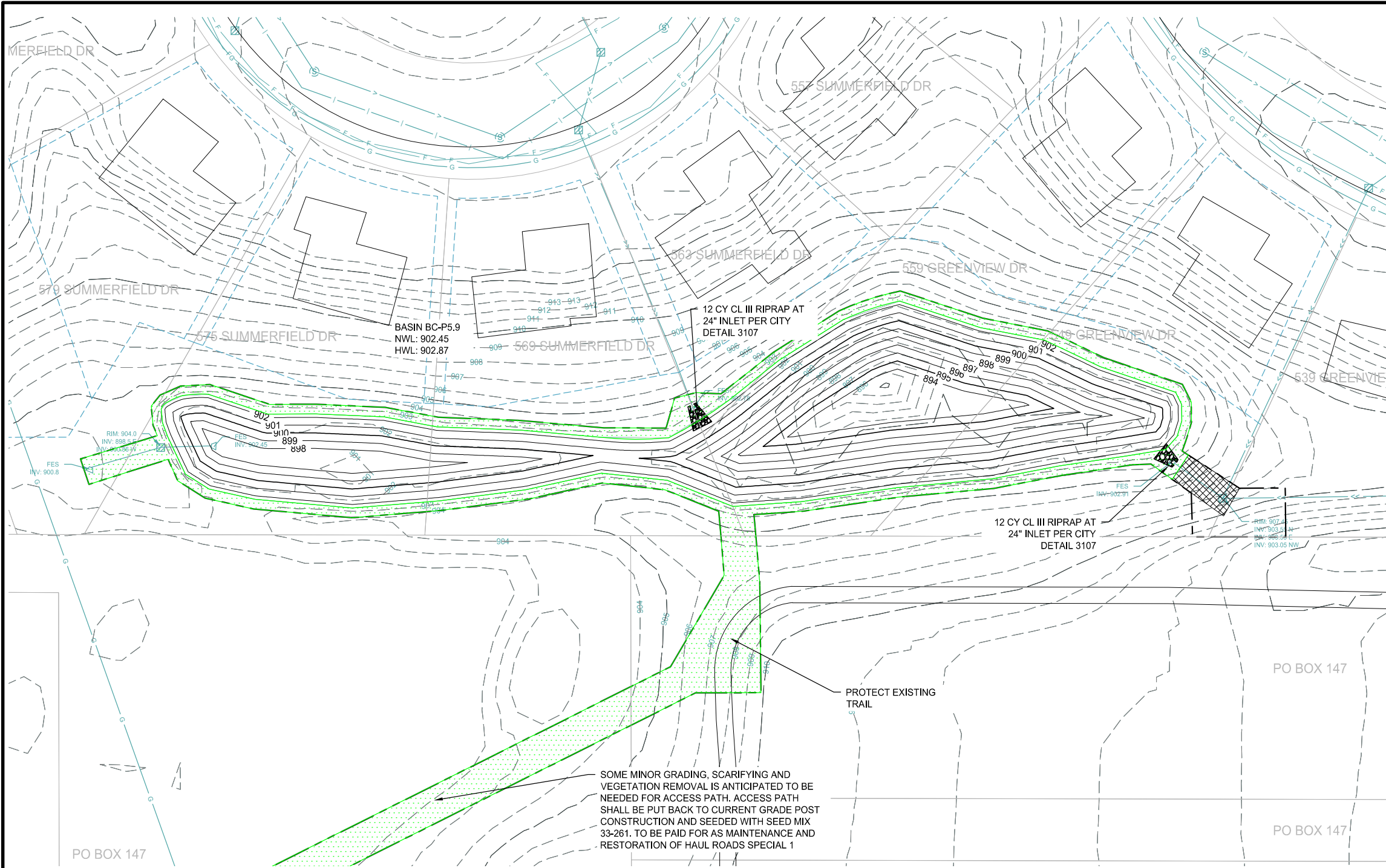
**GRAD PLAN
 BASIN RM-P4.9**

**2022 POND MAINTENANCE PROJECT
 CITY OF CHANHASSEN, MN**

CLIENT PROJECT NO.
 22-05

WSB PROJECT NO.
 021196-000

SHEET
 7 OF 12



LOCATION

0 30 60
SCALE IN FEET

TYPE 25-151 SEED (120 LBS/AC) AND TYPE 21-111 SEED (100 LBS/AC) AND FERTILIZER TYPE 4 (150 LBS / AC)

TYPE 33-261 SEED (35 LBS/AC) AND TYPE 21-111 SEED (100 LBS/AC) AND FERTILIZER TYPE 4 (150 LBS / AC)

STABILIZED CONSTRUCTION ENTRANCE RESTORE WITH SEED MIX 25-151 (120 LBS / AC) AND FERTILIZER TYPE 4 (150 LBS / AC)

CONSTRUCTION LIMITS

ACCESS ROUTE

PROPERTY LINE

DRAINAGE AND UTILITY EASEMENT (PER PLAT)

PROPOSED EASEMENT

STORM SEWER PIPE - EXISTING

CONTOUR - MAJOR - EXISTING

CONTOUR - MINOR - EXISTING

CONTOUR - MAJOR - PROPOSED

CONTOUR - MINOR - PROPOSED

SEDIMENT CONTROL LOG TYPE STRAW

STORM DRAIN INLET PROTECTION

wsb

SCALE: AS SHOWN
PLAN BY: BA

DESIGN BY: SML
CHECK BY: KJF

NO.	DATE	DESCRIPTION

I HEREBY CERTIFY THAT THIS PLAN, SPECIFICATION, OR REPORT WAS PREPARED BY ME OR UNDER MY DIRECT SUPERVISION AND THAT I AM A DULY LICENSED PROFESSIONAL ENGINEER UNDER THE LAWS OF THE STATE OF MINNESOTA.

William C. Alms
WILLIAM ALMS
DATE: 11/22/2022 LIC. NO.: 54301

**EROS PLAN
BASIN BC-P5.9**

**2022 POND MAINTENANCE PROJECT
CITY OF CHANHASSEN, MN**

CLIENT PROJECT NO. 22-05
WSB PROJECT NO. 021196-000
SHEET 8 OF 12

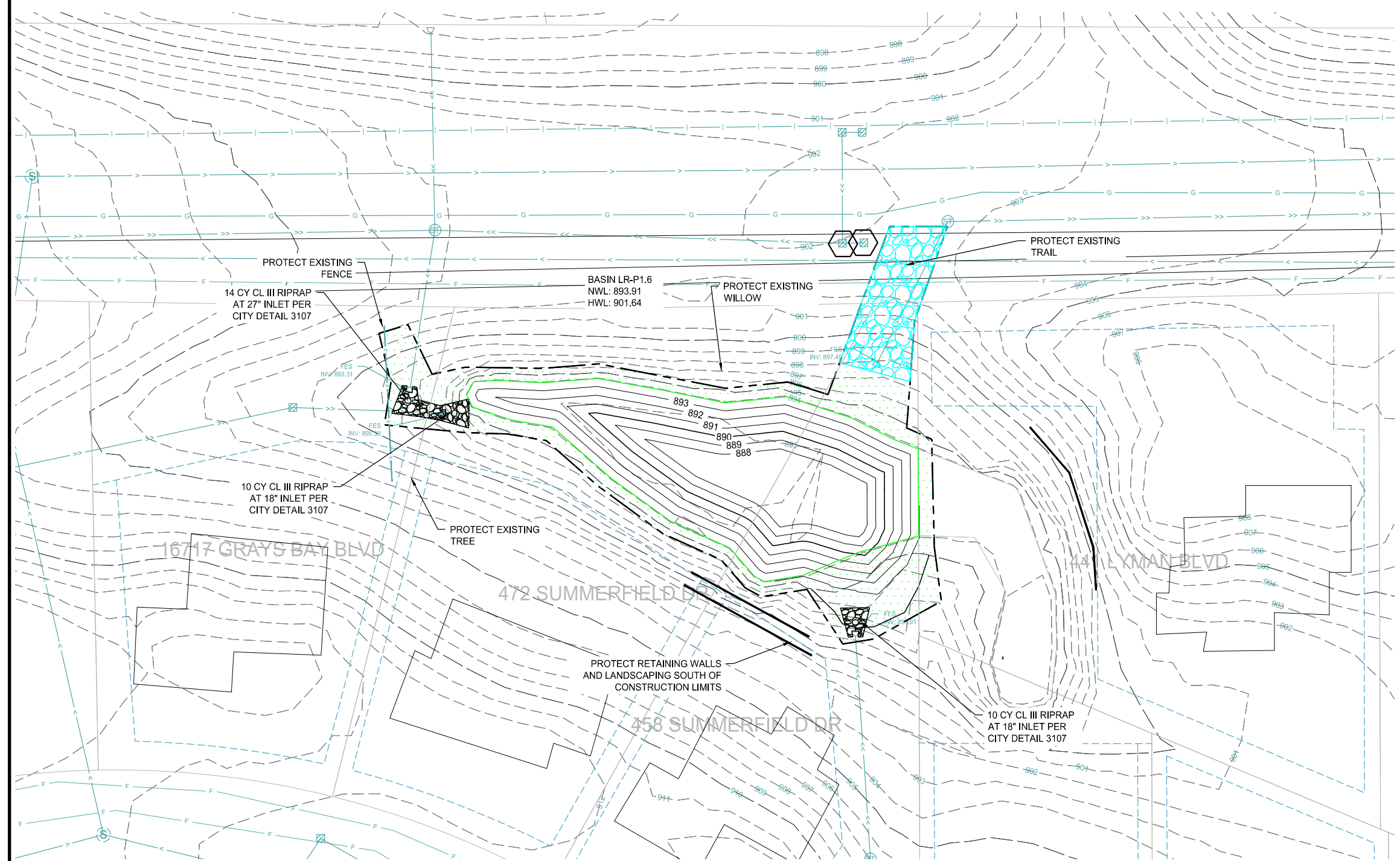
EROSION CONTROL NOTES

- FOR ALL RESTORATION PERFORMED PRIOR TO APRIL 15, RESTORE ALL DISTURBED AREAS WITH OATS COVER CROP (MNDOT SEED MIX 21-111, 100 LBS/AC).
- FOR RESTORATION PERFORMED AFTER APRIL 15, RESTORE ALL POND EDGES AND WOODED AREAS WHERE DISTURBED OR AS DIRECTED BY ENGINEER IN FIELD WITH TYPE 33-261 SEED (35 LBS/AC) OR TYPE 25-151 (120 LBS/AC) AS SHOWN IN PLANS. TYPE 21-111 SEED (100 LBS/AC) AND CATEGORY 3N EROSION CONTROL BLANKET SHALL BE INSTALLED ALONG POND EDGES, BUFFERS, AND NON-MOWABLE SLOPES AS DIRECTED BY THE ENGINEER IN THE FIELD.
- ALL SOILS DISTURBED DURING CONSTRUCTION ACTIVITIES WILL BE STABILIZED FOLLOWING SEED MIXES, FERTILIZER, AND STABILIZING COVER OUTLINED WITHIN THESE PLANS.
- IN THE EVENT THAT RESTORATION CANNOT BE IMPLEMENTED WITHIN 7 DAYS AFTER CONSTRUCTION ACTIVITY IN THE DISTURBED AREA HAS CEASED, TEMPORARY EROSION STABILIZATION BMPS (I.E. HYDRO MULCH 3884.B.2) MUST BE SCHEDULED TO OCCUR WITHIN THAT 7 DAY TIME FRAME.
- CONTRACTOR RESPONSIBLE FOR THE DAMAGE TO STREETS, PARKING LOTS, CONCRETE CURB AND GUTTER, TRAIL, AND TREES NOT SHOWN TO BE REMOVED.
- AT A MINIMUM, DAILY STREET SWEEPING REQUIRED DURING HAULING OPERATIONS, MORE AS NEEDED OR AS DIRECTED BY THE ENGINEER.
- ALL STOCKPILES MUST HAVE DOWN GRADIENT PERIMETER SEDIMENT CONTROL IMPLEMENTED AND MAINTAINED AT ALL TIMES. STOCKPILES TO RECEIVE TEMPORARY STABILIZATION IF UNWORKED FOR 7 DAYS
- DEWATERING/DEICING TO TAKE PLACE PRIOR TO EXCAVATION AND SHALL BE COMPLETED BY DECEMBER 31, 2022 OR AN ALTERNATE DATE AS APPROVED BY THE ENGINEER. ICE IS TO BE STOCKPILED ON SITE AND PUT BACK IN POND FOLLOWING THE EXCAVATION. DEWATERING PLANS MUST BE SUBMITTED AND APPROVED BY THE PROJECT ENGINEER AND DISTRICT 10 DAYS PRIOR TO PUMPING. PLANS MUST INCLUDE OPERATIONS FOR PREVENTING THE DISCHARGE OF TURBID WATER, AND MUST INCLUDE METHODS FOR CONTROLLING EROSION AND SCOUR.
- CONTRACTOR SHALL PERFORM ALL DEWATERING AND EXCAVATION ONSITE AND OFF OF ROADWAY, AND LOAD AND HAUL OUT USING ACCESS ROUTE.
- CONTRACTOR TO GRADE AROUND EXISTING STORM SEWER STRUCTURES AS DIRECTED BY THE ENGINEER.
- CONTRACTOR TO COORDINATE ACCESS LIMITS WITH THE ENGINEER IN THE FIELD.
- EXISTING POND CONTOURS DEVELOPED FROM PRE-DESIGN SURVEY.

RPBCWD EROSION CONTROL NOTES

- NATURAL TOPOGRAPHY AND SOIL CONDITIONS MUST BE PROTECTED, INCLUDING RETENTION ONSITE OF NATIVE TOPSOIL TO THE GREATEST EXTENT POSSIBLE.
- ADDITIONAL MEASURES, SUCH AS HYDRAULIC MULCHING AND OTHER PRACTICES AS SPECIFIED BY THE DISTRICT MUST BE USED ON SLOPES OF 3:1 (H:V) OR STEEPER TO PROVIDE ADEQUATE STABILIZATION.
- FINAL SITE STABILIZATION MEASURES MUST SPECIFY THAT AT LEAST SIX INCHES OF TOPSOIL OR ORGANIC MATTER BE SPREAD AND INCORPORATED INTO THE UNDERLYING SOIL DURING FINAL SITE TREATMENT WHEREVER TOPSOIL HAS BEEN REMOVED.
- CONSTRUCTION SITE WASTE SUCH AS DISCARDED BUILDING MATERIALS, CONCRETE TRUCK WASHOUT, CHEMICALS, LITTER AND SANITARY WASTE MUST BE PROPERLY MANAGED.
- ALL TEMPORARY EROSION AND SEDIMENT CONTROL BMPS MUST BE MAINTAINED UNTIL COMPLETION OF CONSTRUCTION AND VEGETATION IS ESTABLISHED SUFFICIENTLY TO ENSURE STABILITY OF THE SITE, AS DETERMINED BY THE DISTRICT.
- ALL TEMPORARY EROSION AND SEDIMENT CONTROL BMPS MUST BE REMOVED UPON FINAL STABILIZATION.
- SOIL SURFACES COMPACTED DURING CONSTRUCTION AND REMAINING PERVIOUS UPON COMPLETION OF CONSTRUCTION MUST BE DECOMPACTED TO ACHIEVE A SOIL COMPACTION TESTING PRESSURE OF LESS THAN 1,400 KILOPASCALS OR 200 POUNDS PER SQUARE INCH IN THE UPPER 12 INCHES OF THE SOIL PROFILE WHILE TAKING CARE TO PROTECT UTILITIES, TREE ROOTS, AND OTHER EXISTING VEGETATION.
- ALL DISTURBED AREAS MUST BE STABILIZED WITHIN 7 CALENDAR DAYS AFTER LAND-DISTURBING WORK HAS TEMPORARILY OR PERMANENTLY CEASED ON A PROPERTY THAT DRAINS TO AN IMPAIRED WATER, WITHIN 14 DAYS ELSEWHERE.
- THE PERMITTEE MUST, AT A MINIMUM, INSPECT, MAINTAIN AND REPAIR ALL DISTURBED SURFACES AND ALL EROSION AND SEDIMENT CONTROL FACILITIES AND SOIL STABILIZATION MEASURES EVERY DAY WORK IS PERFORMED ON THE SITE AND AT LEAST WEEKLY UNTIL LAND-DISTURBING ACTIVITY HAS CEASED. THEREAFTER, THE PERMITTEE MUST PERFORM THESE RESPONSIBILITIES AT LEAST WEEKLY UNTIL VEGETATIVE COVER IS ESTABLISHED. THE PERMITTEE WILL MAINTAIN A LOG OF ACTIVITIES UNDER THIS SECTION FOR INSPECTION BY THE DISTRICT ON REQUEST.
- ACTIVITIES MUST BE CONDUCTED SO AS TO MINIMIZE THE POTENTIAL TRANSFER OF AQUATIC INVASIVE SPECIES (E.G., ZEBRA MUSSELS, EURASIAN WATERMILFOIL, ETC.) TO THE MAXIMUM EXTENT POSSIBLE.
- NO ACTIVITY AFFECTING THE BED/BANKS OF A PROTECTED WATER MAY BE CONDUCTED BETWEEN MARCH 15 AND JUNE 15.

K:\021196-000\Cad\Plan\021196-000-C-EROS-PLAN.dwg 11/22/2022 3:46:15 PM



LOCATION

0 20 40
SCALE IN FEET

[Cross-hatch pattern]	TYPE 25-151 SEED (120 LBS/AC) AND TYPE 21-111 SEED (100 LBS/AC) AND FERTILIZER TYPE 4 (150 LBS / AC)
[Dotted pattern]	TYPE 33-261 SEED (35 LBS/AC) AND TYPE 21-111 SEED (100 LBS/AC) AND FERTILIZER TYPE 4 (150 LBS / AC)
[Blue hatched pattern]	STABILIZED CONSTRUCTION ENTRANCE RESTORE WITH SEED MIX 25-151 (120 LBS / AC) AND FERTILIZER TYPE 4 (150 LBS / AC)
[Thick dashed line]	CONSTRUCTION LIMITS
[Thin dashed line]	ACCESS ROUTE
[Dotted line]	PROPERTY LINE
[Dashed line]	DRAINAGE AND UTILITY EASEMENT (PER PLAT)
[Dotted line]	PROPOSED EASEMENT
[Blue dashed line]	STORM SEWER PIPE - EXISTING
[Blue dashed line]	920 CONTOUR - MAJOR - EXISTING
[Blue dashed line]	922 CONTOUR - MINOR - EXISTING
[Blue dashed line]	920 CONTOUR - MAJOR - PROPOSED
[Blue dashed line]	922 CONTOUR - MINOR - PROPOSED
[Thick dashed line]	SEDIMENT CONTROL LOG TYPE STRAW
[Hexagon symbol]	STORM DRAIN INLET PROTECTION

wsb

SCALE: AS SHOWN
PLAN BY: BA

DESIGN BY: SML
CHECK BY: KJF

NO.	DATE	DESCRIPTION

I HEREBY CERTIFY THAT THIS PLAN, SPECIFICATION, OR REPORT WAS PREPARED BY ME OR UNDER MY DIRECT SUPERVISION AND THAT I AM A DULY LICENSED PROFESSIONAL ENGINEER UNDER THE LAWS OF THE STATE OF MINNESOTA.

William C. Alms
WILLIAM ALMS
DATE: 11/22/2022 LIC. NO.: 54301

**EROS PLAN
BASIN LR-P1.6**

**2022 POND MAINTENANCE PROJECT
CITY OF CHANHASSEN, MN**

CLIENT PROJECT NO. 22-05
WSB PROJECT NO. 021196-000
SHEET 9 OF 12

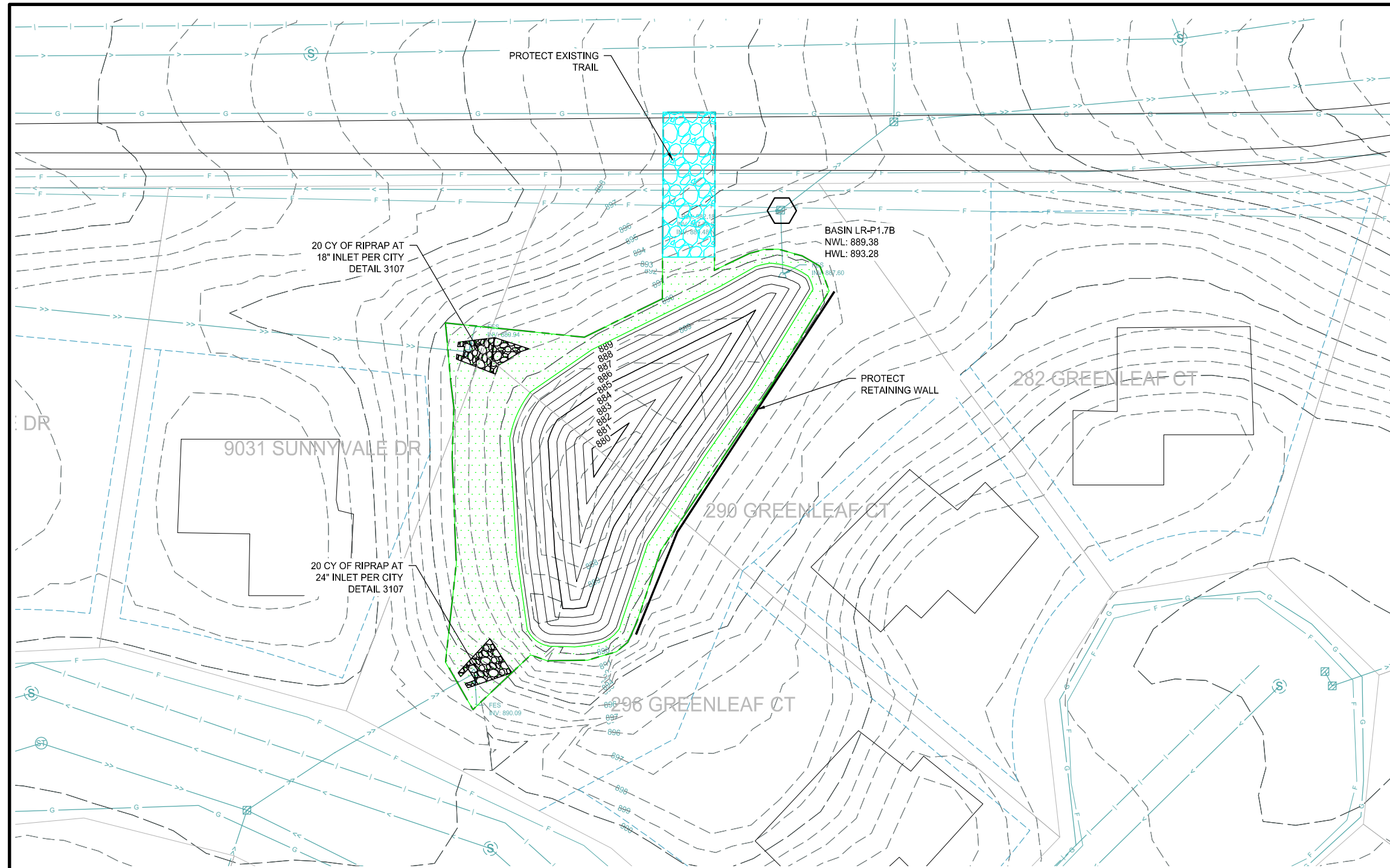
EROSION CONTROL NOTES

- FOR ALL RESTORATION PERFORMED PRIOR TO APRIL 15, RESTORE ALL DISTURBED AREAS WITH OATS COVER CROP (MNDOT SEED MIX 21-111, 100 LBS/AC).
- FOR RESTORATION PERFORMED AFTER APRIL 15, RESTORE ALL POND EDGES AND WOODED AREAS WHERE DISTURBED OR AS DIRECTED BY ENGINEER IN FIELD WITH TYPE 33-261 SEED (35 LBS/AC) OR TYPE 25-151 (120 LBS/AC) AS SHOWN IN PLANS. TYPE 21-111 SEED (100 LBS/AC) AND CATEGORY 3N EROSION CONTROL BLANKET SHALL BE INSTALLED ALONG POND EDGES, BUFFERS, AND NON-MOWABLE SLOPES AS DIRECTED BY THE ENGINEER IN THE FIELD.
- ALL SOILS DISTURBED DURING CONSTRUCTION ACTIVITIES WILL BE STABILIZED FOLLOWING SEED MIXES, FERTILIZER, AND STABILIZING COVER OUTLINED WITHIN THESE PLANS.
- IN THE EVENT THAT RESTORATION CANNOT BE IMPLEMENTED WITHIN 7 DAYS AFTER CONSTRUCTION ACTIVITY IN THE DISTURBED AREA HAS CEASED, TEMPORARY EROSION STABILIZATION BMPs (I.E. HYDRO MULCH 3884.B.2) MUST BE SCHEDULED TO OCCUR WITHIN THAT 7 DAY TIME FRAME.
- CONTRACTOR RESPONSIBLE FOR THE DAMAGE TO STREETS, PARKING LOTS, CONCRETE CURB AND GUTTER, TRAIL, AND TREES NOT SHOWN TO BE REMOVED.
- AT A MINIMUM, DAILY STREET SWEEPING REQUIRED DURING HAULING OPERATIONS, MORE AS NEEDED OR AS DIRECTED BY THE ENGINEER.
- ALL STOCKPILES MUST HAVE DOWN GRADIENT PERIMETER SEDIMENT CONTROL IMPLEMENTED AND MAINTAINED AT ALL TIMES. STOCKPILES TO RECEIVE TEMPORARY STABILIZATION IF UNWORKED FOR 7 DAYS
- DEWATERING/DEICING TO TAKE PLACE PRIOR TO EXCAVATION AND SHALL BE COMPLETED BY DECEMBER 31, 2022 OR AN ALTERNATE DATE AS APPROVED BY THE ENGINEER. ICE IS TO BE STOCKPILED ON SITE AND PUT BACK IN POND FOLLOWING THE EXCAVATION. DEWATERING PLANS MUST BE SUBMITTED AND APPROVED BY THE PROJECT ENGINEER AND DISTRICT 10 DAYS PRIOR TO PUMPING. PLANS MUST INCLUDE OPERATIONS FOR PREVENTING THE DISCHARGE OF TURBID WATER, AND MUST INCLUDE METHODS FOR CONTROLLING EROSION AND SCOUR.
- CONTRACTOR SHALL PERFORM ALL DEWATERING AND EXCAVATION ONSITE AND OFF OF ROADWAY, AND LOAD AND HAUL OUT USING ACCESS ROUTE.
- CONTRACTOR TO GRADE AROUND EXISTING STORM SEWER STRUCTURES AS DIRECTED BY THE ENGINEER.
- CONTRACTOR TO COORDINATE ACCESS LIMITS WITH THE ENGINEER IN THE FIELD.
- EXISTING POND CONTOURS DEVELOPED FROM PRE-DESIGN SURVEY.

RPBCWD EROSION CONTROL NOTES

- NATURAL TOPOGRAPHY AND SOIL CONDITIONS MUST BE PROTECTED, INCLUDING RETENTION ONSITE OF NATIVE TOPSOIL TO THE GREATEST EXTENT POSSIBLE.
- ADDITIONAL MEASURES, SUCH AS HYDRAULIC MULCHING AND OTHER PRACTICES AS SPECIFIED BY THE DISTRICT MUST BE USED ON SLOPES OF 3:1 (H:V) OR STEEPER TO PROVIDE ADEQUATE STABILIZATION.
- FINAL SITE STABILIZATION MEASURES MUST SPECIFY THAT AT LEAST SIX INCHES OF TOPSOIL OR ORGANIC MATTER BE SPREAD AND INCORPORATED INTO THE UNDERLYING SOIL DURING FINAL SITE TREATMENT WHEREVER TOPSOIL HAS BEEN REMOVED.
- CONSTRUCTION SITE WASTE SUCH AS DISCARDED BUILDING MATERIALS, CONCRETE TRUCK WASHOUT, CHEMICALS, LITTER AND SANITARY WASTE MUST BE PROPERLY MANAGED.
- ALL TEMPORARY EROSION AND SEDIMENT CONTROL BMPs MUST BE MAINTAINED UNTIL COMPLETION OF CONSTRUCTION AND VEGETATION IS ESTABLISHED SUFFICIENTLY TO ENSURE STABILITY OF THE SITE, AS DETERMINED BY THE DISTRICT.
- ALL TEMPORARY EROSION AND SEDIMENT CONTROL BMPs MUST BE REMOVED UPON FINAL STABILIZATION.
- SOIL SURFACES COMPACTED DURING CONSTRUCTION AND REMAINING PERVIOUS UPON COMPLETION OF CONSTRUCTION MUST BE DECOMPACTED TO ACHIEVE A SOIL COMPACTION TESTING PRESSURE OF LESS THAN 1,400 KILOPASCALS OR 200 POUNDS PER SQUARE INCH IN THE UPPER 12 INCHES OF THE SOIL PROFILE WHILE TAKING CARE TO PROTECT UTILITIES, TREE ROOTS, AND OTHER EXISTING VEGETATION.
- ALL DISTURBED AREAS MUST BE STABILIZED WITHIN 7 CALENDAR DAYS AFTER LAND-DISTURBING WORK HAS TEMPORARILY OR PERMANENTLY CEASED ON A PROPERTY THAT DRAINS TO AN IMPAIRED WATER, WITHIN 14 DAYS ELSEWHERE.
- THE PERMITTEE MUST, AT A MINIMUM, INSPECT, MAINTAIN AND REPAIR ALL DISTURBED SURFACES AND ALL EROSION AND SEDIMENT CONTROL FACILITIES AND SOIL STABILIZATION MEASURES EVERY DAY WORK IS PERFORMED ON THE SITE AND AT LEAST WEEKLY UNTIL LAND-DISTURBING ACTIVITY HAS CEASED. THEREAFTER, THE PERMITTEE MUST PERFORM THESE RESPONSIBILITIES AT LEAST WEEKLY UNTIL VEGETATIVE COVER IS ESTABLISHED. THE PERMITTEE WILL MAINTAIN A LOG OF ACTIVITIES UNDER THIS SECTION FOR INSPECTION BY THE DISTRICT ON REQUEST.
- ACTIVITIES MUST BE CONDUCTED SO AS TO MINIMIZE THE POTENTIAL TRANSFER OF AQUATIC INVASIVE SPECIES (E.G., ZEBRA MUSSELS, EURASIAN WATERMILFOIL, ETC.) TO THE MAXIMUM EXTENT POSSIBLE.
- NO ACTIVITY AFFECTING THE BED/BANKS OF A PROTECTED WATER MAY BE CONDUCTED BETWEEN MARCH 15 AND JUNE 15.

K:\021196-000\Cadd\Plan\021196-000-C-EROS-PLAN.dwg 11/22/2022 3:46:31 PM



LOCATION

0 20 40
 H. SCALE IN FEET

TYPE 25-151 SEED (120 LBS/AC) AND TYPE 21-111 SEED (100 LBS/AC) AND FERTILIZER TYPE 4 (150 LBS / AC)
 TYPE 33-261 SEED (35 LBS/AC) AND TYPE 21-111 SEED (100 LBS/AC) AND FERTILIZER TYPE 4 (150 LBS / AC)
 STABILIZED CONSTRUCTION ENTRANCE RESTORE WITH SEED MIX 25-151 (120 LBS / AC) AND FERTILIZER TYPE 4 (150 LBS / AC)
 CONSTRUCTION LIMITS
 ACCESS ROUTE
 PROPERTY LINE
 DRAINAGE AND UTILITY EASEMENT (PER PLAT)
 PROPOSED EASEMENT
 STORM SEWER PIPE - EXISTING
 CONTOUR - MAJOR - EXISTING
 CONTOUR - MINOR - EXISTING
 CONTOUR - MAJOR - PROPOSED
 CONTOUR - MINOR - PROPOSED
 SEDIMENT CONTROL LOG TYPE STRAW
 STORM DRAIN INLET PROTECTION

wsb

SCALE: AS SHOWN
 PLAN BY: BA

DESIGN BY: SML
 CHECK BY: KJF

NO.	DATE	DESCRIPTION

I HEREBY CERTIFY THAT THIS PLAN, SPECIFICATION, OR REPORT WAS PREPARED BY ME OR UNDER MY DIRECT SUPERVISION AND THAT I AM A DULY LICENSED PROFESSIONAL ENGINEER UNDER THE LAWS OF THE STATE OF MINNESOTA.

WILLIAM ALMS
 DATE: 11/22/2022 LIC. NO.: 54301

**EROS PLAN
BASIN LR-P1.7B**

EROSION CONTROL NOTES

- FOR ALL RESTORATION PERFORMED PRIOR TO APRIL 15, RESTORE ALL DISTURBED AREAS WITH OATS COVER CROP (MNDOT SEED MIX 21-111, 100 LBS/AC).
- FOR RESTORATION PERFORMED AFTER APRIL 15, RESTORE ALL POND EDGES AND WOODED AREAS WHERE DISTURBED OR AS DIRECTED BY ENGINEER IN FIELD WITH TYPE 33-261 SEED (35 LBS/AC) OR TYPE 25-151 (120 LBS/AC) AS SHOWN IN PLANS. TYPE 21-111 SEED (100 LBS/AC) AND CATEGORY 3N EROSION CONTROL BLANKET SHALL BE INSTALLED ALONG POND EDGES, BUFFERS, AND NON-MOWABLE SLOPES AS DIRECTED BY THE ENGINEER IN THE FIELD.
- ALL SOILS DISTURBED DURING CONSTRUCTION ACTIVITIES WILL BE STABILIZED FOLLOWING SEED MIXES, FERTILIZER, AND STABILIZING COVER OUTLINED WITHIN THESE PLANS.
- IN THE EVENT THAT RESTORATION CANNOT BE IMPLEMENTED WITHIN 7 DAYS AFTER CONSTRUCTION ACTIVITY IN THE DISTURBED AREA HAS CEASED, TEMPORARY EROSION STABILIZATION BMPS (I.E. HYDRO MULCH 3884.B.2) MUST BE SCHEDULED TO OCCUR WITHIN THAT 7 DAY TIME FRAME.
- CONTRACTOR RESPONSIBLE FOR THE DAMAGE TO STREETS, PARKING LOTS, CONCRETE CURB AND GUTTER, TRAIL, AND TREES NOT SHOWN TO BE REMOVED.
- AT A MINIMUM, DAILY STREET SWEEPING REQUIRED DURING HAULING OPERATIONS, MORE AS NEEDED OR AS DIRECTED BY THE ENGINEER.
- ALL STOCKPILES MUST HAVE DOWN GRADIENT PERIMETER SEDIMENT CONTROL IMPLEMENTED AND MAINTAINED AT ALL TIMES. STOCKPILES TO RECEIVE TEMPORARY STABILIZATION IF UNWORKED FOR 7 DAYS
- DEWATERING/DEICING TO TAKE PLACE PRIOR TO EXCAVATION AND SHALL BE COMPLETED BY DECEMBER 31, 2022 OR AN ALTERNATE DATE AS APPROVED BY THE ENGINEER. ICE IS TO BE STOCKPILED ON SITE AND PUT BACK IN POND FOLLOWING THE EXCAVATION. DEWATERING PLANS MUST BE SUBMITTED AND APPROVED BY THE PROJECT ENGINEER AND DISTRICT 10 DAYS PRIOR TO PUMPING. PLANS MUST INCLUDE OPERATIONS FOR PREVENTING THE DISCHARGE OF TURBID WATER, AND MUST INCLUDE METHODS FOR CONTROLLING EROSION AND SCOUR.
- CONTRACTOR SHALL PERFORM ALL DEWATERING AND EXCAVATION ONSITE AND OFF OF ROADWAY, AND LOAD AND HAUL OUT USING ACCESS ROUTE.
- CONTRACTOR TO GRADE AROUND EXISTING STORM SEWER STRUCTURES AS DIRECTED BY THE ENGINEER.
- CONTRACTOR TO COORDINATE ACCESS LIMITS WITH THE ENGINEER IN THE FIELD.
- EXISTING POND CONTOURS DEVELOPED FROM PRE-DESIGN SURVEY.

RPBCWD EROSION CONTROL NOTES

- NATURAL TOPOGRAPHY AND SOIL CONDITIONS MUST BE PROTECTED, INCLUDING RETENTION ONSITE OF NATIVE TOPSOIL TO THE GREATEST EXTENT POSSIBLE.
- ADDITIONAL MEASURES, SUCH AS HYDRAULIC MULCHING AND OTHER PRACTICES AS SPECIFIED BY THE DISTRICT MUST BE USED ON SLOPES OF 3:1 (H:V) OR STEEPER TO PROVIDE ADEQUATE STABILIZATION.
- FINAL SITE STABILIZATION MEASURES MUST SPECIFY THAT AT LEAST SIX INCHES OF TOPSOIL OR ORGANIC MATTER BE SPREAD AND INCORPORATED INTO THE UNDERLYING SOIL DURING FINAL SITE TREATMENT WHEREVER TOPSOIL HAS BEEN REMOVED.
- CONSTRUCTION SITE WASTE SUCH AS DISCARDED BUILDING MATERIALS, CONCRETE TRUCK WASHOUT, CHEMICALS, LITTER AND SANITARY WASTE MUST BE PROPERLY MANAGED.
- ALL TEMPORARY EROSION AND SEDIMENT CONTROL BMPS MUST BE MAINTAINED UNTIL COMPLETION OF CONSTRUCTION AND VEGETATION IS ESTABLISHED SUFFICIENTLY TO ENSURE STABILITY OF THE SITE, AS DETERMINED BY THE DISTRICT.
- ALL TEMPORARY EROSION AND SEDIMENT CONTROL BMPS MUST BE REMOVED UPON FINAL STABILIZATION.
- SOIL SURFACES COMPACTED DURING CONSTRUCTION AND REMAINING PERVIOUS UPON COMPLETION OF CONSTRUCTION MUST BE DECOMPACTED TO ACHIEVE A SOIL COMPACTION TESTING PRESSURE OF LESS THAN 1,400 KILOPASCALS OR 200 POUNDS PER SQUARE INCH IN THE UPPER 12 INCHES OF THE SOIL PROFILE WHILE TAKING CARE TO PROTECT UTILITIES, TREE ROOTS, AND OTHER EXISTING VEGETATION.
- ALL DISTURBED AREAS MUST BE STABILIZED WITHIN 7 CALENDAR DAYS AFTER LAND-DISTURBING WORK HAS TEMPORARILY OR PERMANENTLY CEASED ON A PROPERTY THAT DRAINS TO AN IMPAIRED WATER, WITHIN 14 DAYS ELSEWHERE.
- THE PERMITTEE MUST, AT A MINIMUM, INSPECT, MAINTAIN AND REPAIR ALL DISTURBED SURFACES AND ALL EROSION AND SEDIMENT CONTROL FACILITIES AND SOIL STABILIZATION MEASURES EVERY DAY WORK IS PERFORMED ON THE SITE AND AT LEAST WEEKLY UNTIL LAND-DISTURBING ACTIVITY HAS CEASED. THEREAFTER, THE PERMITTEE MUST PERFORM THESE RESPONSIBILITIES AT LEAST WEEKLY UNTIL VEGETATIVE COVER IS ESTABLISHED. THE PERMITTEE WILL MAINTAIN A LOG OF ACTIVITIES UNDER THIS SECTION FOR INSPECTION BY THE DISTRICT ON REQUEST.
- ACTIVITIES MUST BE CONDUCTED SO AS TO MINIMIZE THE POTENTIAL TRANSFER OF AQUATIC INVASIVE SPECIES (E.G., ZEBRA MUSSELS, EURASIAN WATERMILFOIL, ETC.) TO THE MAXIMUM EXTENT POSSIBLE.
- NO ACTIVITY AFFECTING THE BED/BANKS OF A PROTECTED WATER MAY BE CONDUCTED BETWEEN MARCH 15 AND JUNE 15.

2022 POND MAINTENANCE PROJECT
CITY OF CHANHASSEN, MN

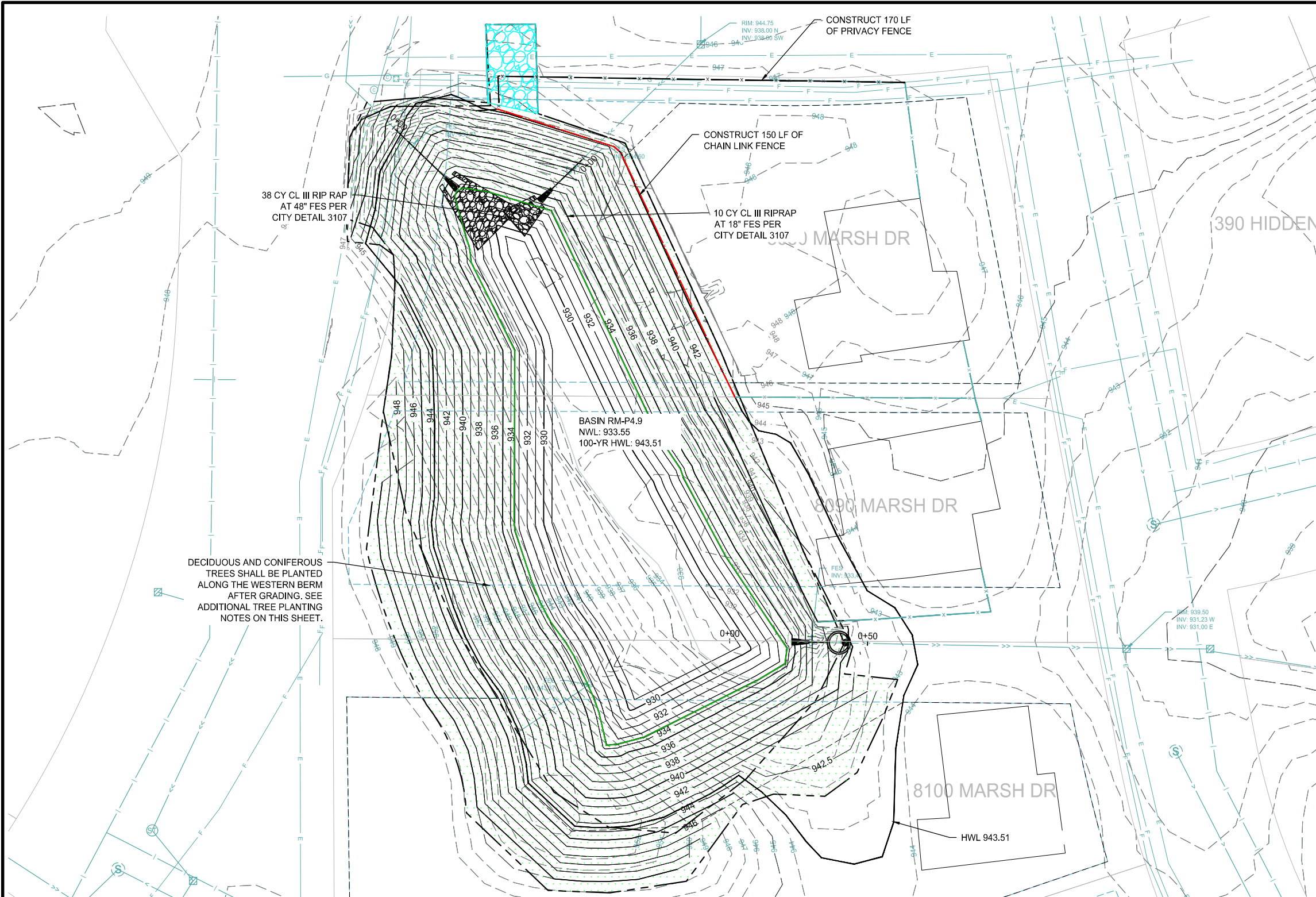
CLIENT PROJECT NO.
22-05

WSB PROJECT NO.
021196-000

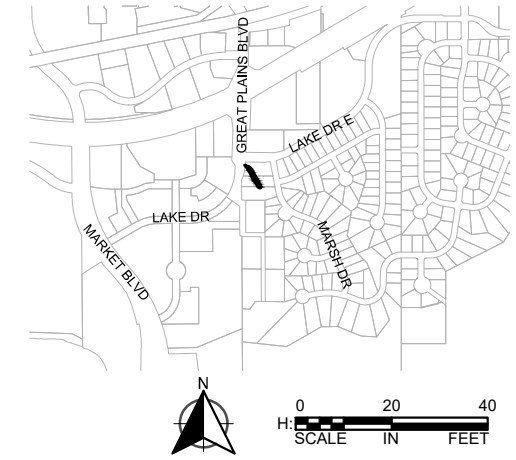
SHEET
10 OF 12

K:\021196-000\Cad\Plan\021196-000-C-EROS-PLAN.dwg 11/22/2022 3:46:48 PM

K:\021196-000\Cadd\Plan\021196-000-C-EROS-PLAN.dwg 11/22/2022 3:47:02 PM



LOCATION



- TYPE 25-151 SEED (120 LBS/AC) AND TYPE 21-111 SEED (100 LBS/AC) AND FERTILIZER TYPE 4 (150 LBS / AC)
- TYPE 33-261 SEED (35 LBS/AC) AND TYPE 21-111 SEED (100 LBS/AC) AND FERTILIZER TYPE 4 (150 LBS / AC)
- STABILIZED CONSTRUCTION ENTRANCE RESTORE WITH SEED MIX 25-151 (120 LBS / AC) AND FERTILIZER TYPE 4 (150 LBS / AC)
- CONSTRUCTION LIMITS
- ACCESS ROUTE
- PROPERTY LINE
- DRAINAGE AND UTILITY EASEMENT (PER PLAT)
- PROPOSED EASEMENT
- STORM SEWER PIPE - EXISTING
- 920 CONTOUR - MAJOR - EXISTING
- 922 CONTOUR - MINOR - EXISTING
- 920 CONTOUR - MAJOR - PROPOSED
- 922 CONTOUR - MINOR - PROPOSED
- SEDIMENT CONTROL LOG TYPE STRAW
- STORM DRAIN INLET PROTECTION

TREE PLANTING NOTES

- A. CONTRACTOR TO PROVIDE LOCALLY SOURCED, ZONE HARDY TREES FOR THE SPECIFIED PROJECT.
- B. DECIDUOUS TREES SHALL BE 2.5" CAL B&B AND NO LESS THAN 3 VARYING HARDWOOD TREES OF DIFFERENT SPECIES.
- C. CONIFEROUS TREES SHALL BE 6' HT B&B AND NO LESS THAN 2 VARYING SPECIES WITH AT LEAST ONE PINE SPECIES AND ONE FIR/SPRUCE SPECIES (NO COLORADO BLUE SPRUCE).
- D. PLANTINGS SHALL BE STAKED FOR APPROVAL PRIOR TO INSTALLATION AND INSTALLED IN "GROUPINGS".
- E. A MINIMUM 6" DIAMETER BY 4" DEEP MULCH RING SHALL BE INSTALLED AT ALL TREE PLANTINGS. MULCH BEDS SHALL BE CONSIDERED INCIDENTAL TO THE TREE PLANTINGS.
- F. A ONE YEAR WARRANTY SHALL BE PLACED ON THE TREES. ADDITIONAL INFORMATION ON THE WARRANTY PERIOD CAN BE FOUND IN THE PROJECT SPECIFICATIONS.

RPBCWD EROSION CONTROL NOTES

- A. NATURAL TOPOGRAPHY AND SOIL CONDITIONS MUST BE PROTECTED, INCLUDING RETENTION ONSITE OF NATIVE TOPSOIL TO THE GREATEST EXTENT POSSIBLE.
- B. ADDITIONAL MEASURES, SUCH AS HYDRAULIC MULCHING AND OTHER PRACTICES AS SPECIFIED BY THE DISTRICT MUST BE USED ON SLOPES OF 3:1 (H:V) OR STEEPER TO PROVIDE ADEQUATE STABILIZATION.
- C. FINAL SITE STABILIZATION MEASURES MUST SPECIFY THAT AT LEAST SIX INCHES OF TOPSOIL OR ORGANIC MATTER BE SPREAD AND INCORPORATED INTO THE UNDERLYING SOIL DURING FINAL SITE TREATMENT WHEREVER TOPSOIL HAS BEEN REMOVED.
- D. CONSTRUCTION SITE WASTE SUCH AS DISCARDED BUILDING MATERIALS, CONCRETE TRUCK WASHOUT, CHEMICALS, LITTER AND SANITARY WASTE MUST BE PROPERLY MANAGED.
- E. ALL TEMPORARY EROSION AND SEDIMENT CONTROL BMPS MUST BE MAINTAINED UNTIL COMPLETION OF CONSTRUCTION AND VEGETATION IS ESTABLISHED SUFFICIENTLY TO ENSURE STABILITY OF THE SITE, AS DETERMINED BY THE DISTRICT.
- F. ALL TEMPORARY EROSION AND SEDIMENT CONTROL BMPS MUST BE REMOVED UPON FINAL STABILIZATION.
- G. SOIL SURFACES COMPACTED DURING CONSTRUCTION AND REMAINING PVIOUS UPON COMPLETION OF CONSTRUCTION MUST BE DECOMPACTED TO ACHIEVE A SOIL COMPACTION TESTING PRESSURE OF LESS THAN 1,400 KILOPASCALS OR 200 POUNDS PER SQUARE INCH IN THE UPPER 12 INCHES OF THE SOIL PROFILE WHILE TAKING CARE TO PROTECT UTILITIES, TREE ROOTS, AND OTHER EXISTING VEGETATION.
- H. ALL DISTURBED AREAS MUST BE STABILIZED WITHIN 7 CALENDAR DAYS AFTER LAND-DISTURBING WORK HAS TEMPORARILY OR PERMANENTLY CEASED ON A PROPERTY THAT DRAINS TO AN IMPAIRED WATER, WITHIN 14 DAYS ELSEWHERE.
- I. THE PERMITTEE MUST, AT A MINIMUM, INSPECT, MAINTAIN AND REPAIR ALL DISTURBED SURFACES AND ALL EROSION AND SEDIMENT CONTROL FACILITIES AND SOIL STABILIZATION MEASURES EVERY DAY WORK IS PERFORMED ON THE SITE AND AT LEAST WEEKLY UNTIL LAND-DISTURBING ACTIVITY HAS CEASED. THEREAFTER, THE PERMITTEE MUST PERFORM THESE RESPONSIBILITIES AT LEAST WEEKLY UNTIL VEGETATIVE COVER IS ESTABLISHED. THE PERMITTEE WILL MAINTAIN A LOG OF ACTIVITIES UNDER THIS SECTION FOR INSPECTION BY THE DISTRICT ON REQUEST.
- J. ACTIVITIES MUST BE CONDUCTED SO AS TO MINIMIZE THE POTENTIAL TRANSFER OF AQUATIC INVASIVE SPECIES (E.G., ZEBRA MUSSELS, EURASIAN WATERMILFOIL, ETC.) TO THE MAXIMUM EXTENT POSSIBLE.
- K. NO ACTIVITY AFFECTING THE BED/BANKS OF A PROTECTED WATER MAY BE CONDUCTED BETWEEN MARCH 15 AND JUNE 15.

EROSION CONTROL NOTES

- 1. FOR ALL RESTORATION PERFORMED PRIOR TO APRIL 15, RESTORE ALL DISTURBED AREAS WITH OATS COVER CROP (MNDOT SEED MIX 21-111, 100 LBS/AC).
- 2. FOR RESTORATION PERFORMED AFTER APRIL 15, RESTORE ALL POND EDGES AND WOODED AREAS WHERE DISTURBED OR AS DIRECTED BY ENGINEER IN FIELD WITH TYPE 33-261 SEED (35 LBS/AC) OR TYPE 25-151 (120 LBS/AC) AS SHOWN IN PLANS. TYPE 21-111 SEED (100 LBS/AC) AND CATEGORY 3N EROSION CONTROL BLANKET SHALL BE INSTALLED ALONG POND EDGES, BUFFERS, AND NON-MOWABLE SLOPES AS DIRECTED BY THE ENGINEER IN THE FIELD.
- 3. ALL SOILS DISTURBED DURING CONSTRUCTION ACTIVITIES WILL BE STABILIZED FOLLOWING SEED MIXES, FERTILIZER, AND STABILIZING COVER OUTLINED WITHIN THESE PLANS.
- 4. IN THE EVENT THAT RESTORATION CANNOT BE IMPLEMENTED WITHIN 7 DAYS AFTER CONSTRUCTION ACTIVITY IN THE DISTURBED AREA HAS CEASED, TEMPORARY EROSION STABILIZATION BMPS (I.E. HYDRO MULCH 3884.B.2) MUST BE SCHEDULED TO OCCUR WITHIN THAT 7 DAY TIME FRAME.
- 5. CONTRACTOR RESPONSIBLE FOR THE DAMAGE TO STREETS, PARKING LOTS, CONCRETE CURB AND GUTTER, TRAIL, AND TREES NOT SHOWN TO BE REMOVED.
- 6. AT A MINIMUM, DAILY STREET SWEEPING REQUIRED DURING HAULING OPERATIONS, MORE AS NEEDED OR AS DIRECTED BY THE ENGINEER.
- 7. ALL STOCKPILES MUST HAVE DOWN GRADIENT PERIMETER SEDIMENT CONTROL IMPLEMENTED AND MAINTAINED AT ALL TIMES. STOCKPILES TO RECEIVE TEMPORARY STABILIZATION IF UNWORKED FOR 7 DAYS
- 8. DEWATERING/DEICING TO TAKE PLACE PRIOR TO EXCAVATION AND SHALL BE COMPLETED BY DECEMBER 31, 2022 OR AN ALTERNATE DATE AS APPROVED BY THE ENGINEER. ICE IS TO BE STOCKPILED ON SITE AND PUT BACK IN POND FOLLOWING THE EXCAVATION. DEWATERING PLANS MUST BE SUBMITTED AND APPROVED BY THE PROJECT ENGINEER AND DISTRICT 10 DAYS PRIOR TO PUMPING. PLANS MUST INCLUDE OPERATIONS FOR PREVENTING THE DISCHARGE OF TURBID WATER, AND MUST INCLUDE METHODS FOR CONTROLLING EROSION AND SCOUR.
- 9. CONTRACTOR SHALL PERFORM ALL DEWATERING AND EXCAVATION ONSITE AND OFF OF ROADWAY, AND LOAD AND HAUL OUT USING ACCESS ROUTE.
- 10. CONTRACTOR TO GRADE AROUND EXISTING STORM SEWER STRUCTURES AS DIRECTED BY THE ENGINEER.
- 11. CONTRACTOR TO COORDINATE ACCESS LIMITS WITH THE ENGINEER IN THE FIELD.
- 12. EXISTING POND CONTOURS DEVELOPED FROM PRE-DESIGN SURVEY.

DECIDUOUS AND CONIFEROUS TREES SHALL BE PLANTED ALONG THE WESTERN BERM AFTER GRADING. SEE ADDITIONAL TREE PLANTING NOTES ON THIS SHEET.

BASIN RM-P4.9
NWL: 933.55
100-YR HWL: 943.51

8090 MARSH DR

8100 MARSH DR

HWL 943.51

390 HIDDEN



SCALE: AS SHOWN
PLAN BY: BA
DESIGN BY: SML
CHECK BY: KJF

NO.	DATE	DESCRIPTION

I HEREBY CERTIFY THAT THIS PLAN, SPECIFICATION, OR REPORT WAS PREPARED BY ME OR UNDER MY DIRECT SUPERVISION AND THAT I AM A DULY LICENSED PROFESSIONAL ENGINEER UNDER THE LAWS OF THE STATE OF MINNESOTA.

William C. Alms
WILLIAM ALMS
DATE: 11/22/2022 LIC. NO.: 54301

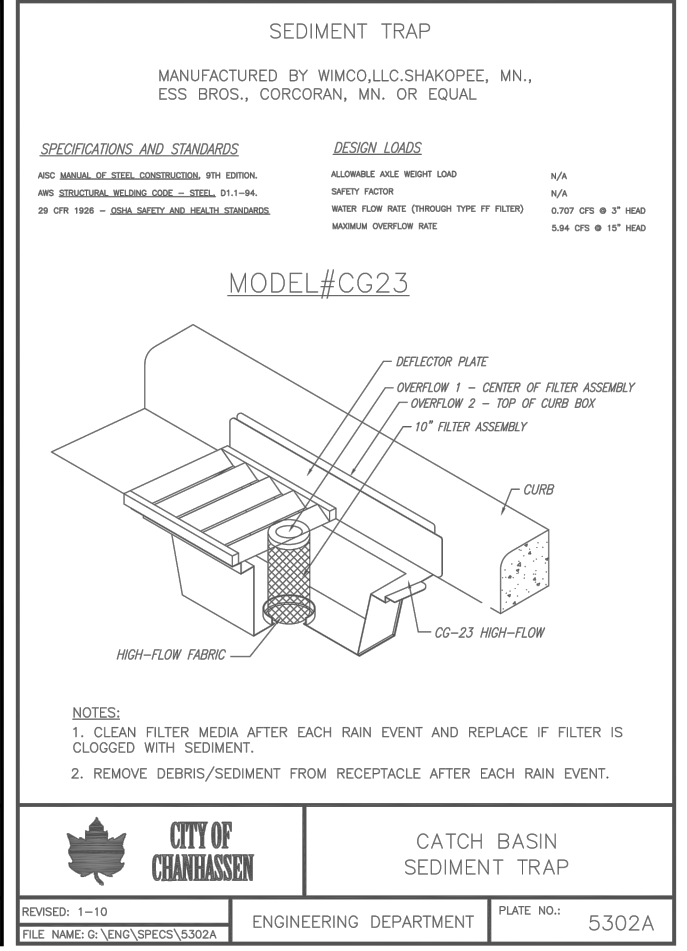
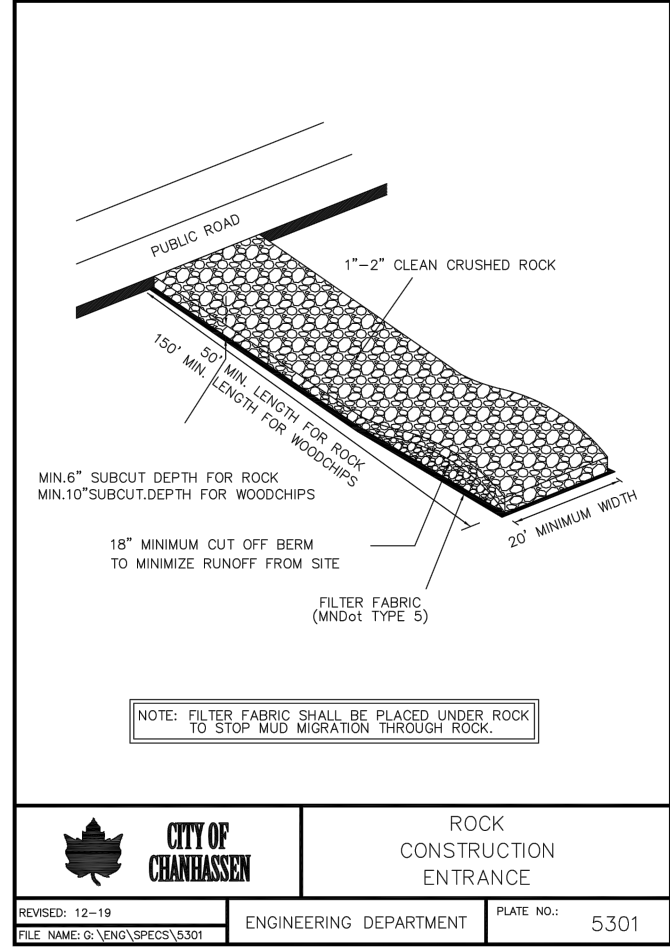
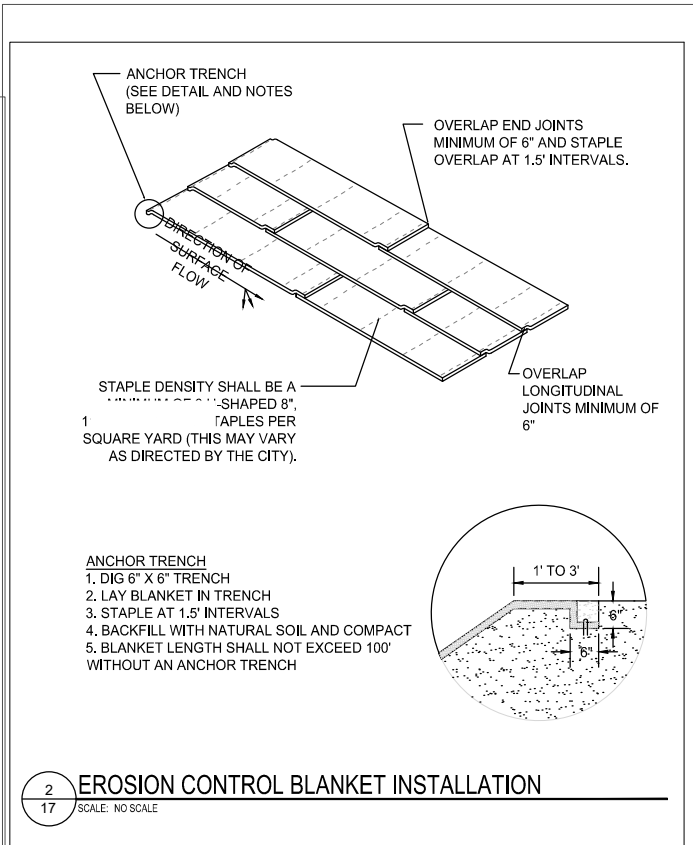
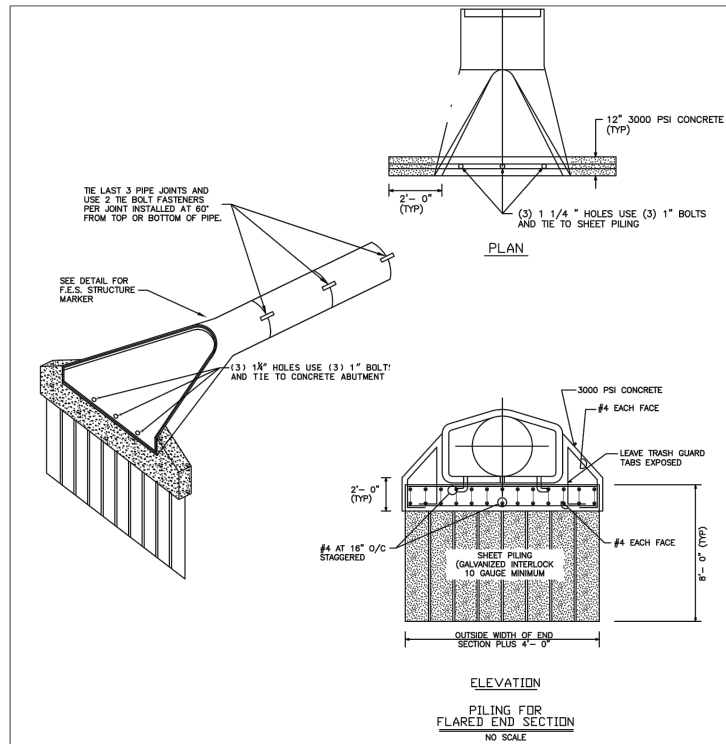
EROS PLAN
BASIN RM-P4.9

2022 POND MAINTENANCE PROJECT
CITY OF CHANHASSEN, MN

CLIENT PROJECT NO.
22-05

WSB PROJECT NO.
021196-000

SHEET
11 OF 12

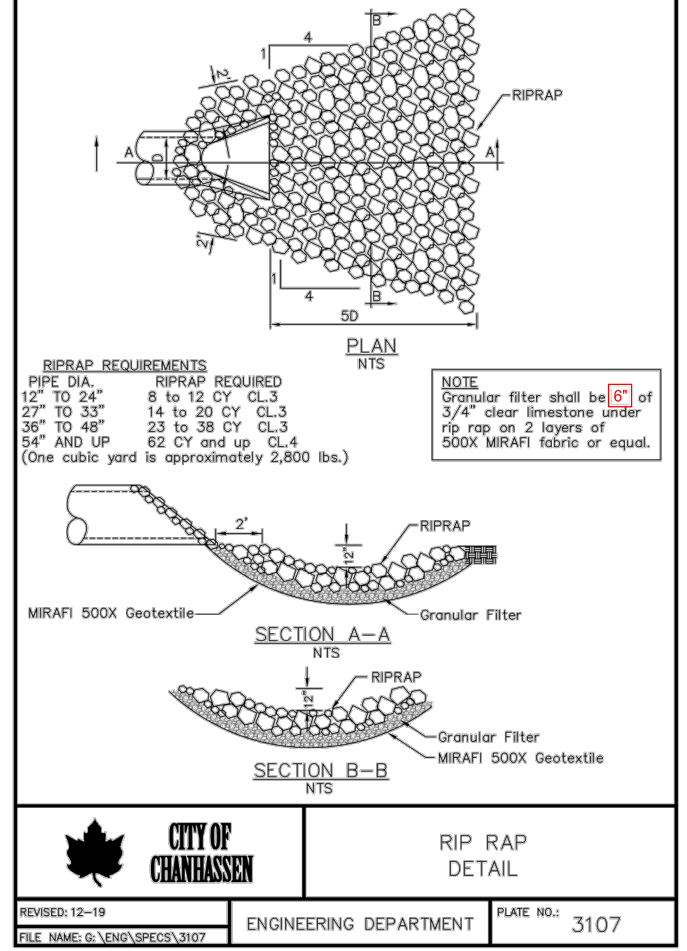
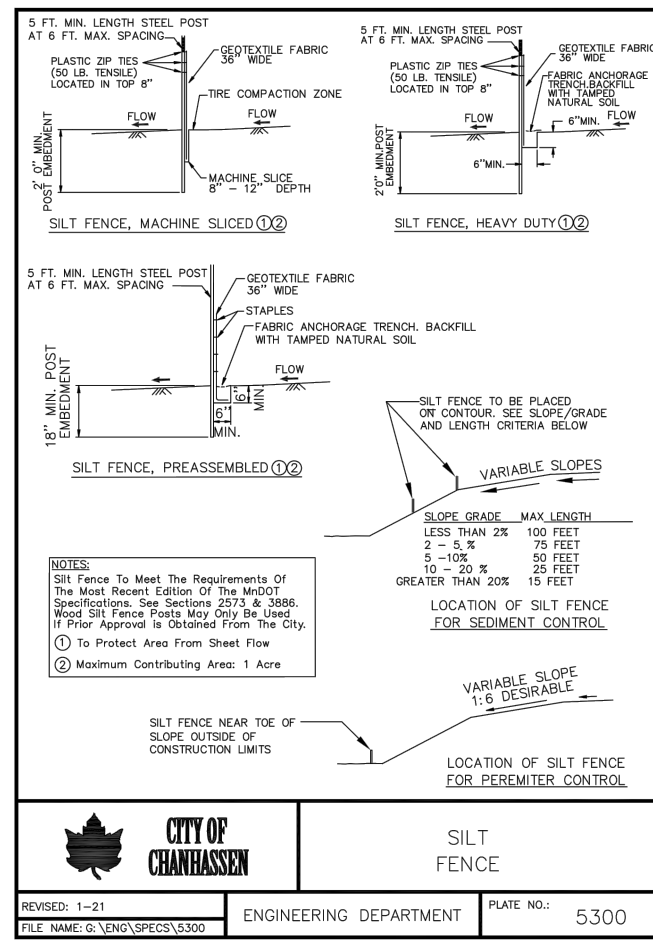
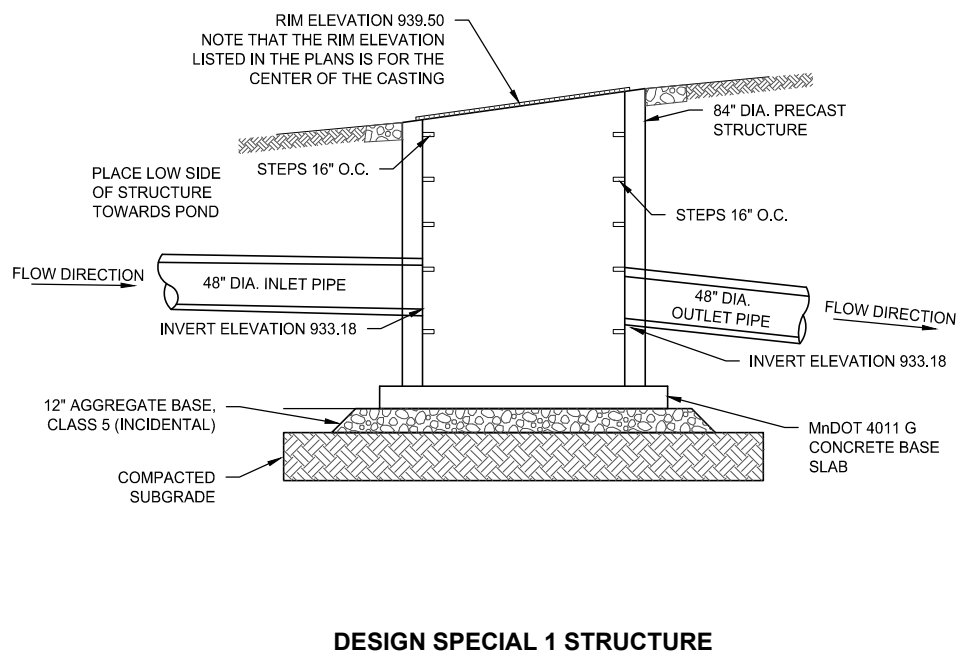


17

2 EROSION CONTROL BLANKET INSTALLATION

CITY OF CHANHASSEN
ENGINEERING DEPARTMENT
PLATE NO.: 5301

CITY OF CHANHASSEN
ENGINEERING DEPARTMENT
PLATE NO.: 5302A



K:\021196-000\Cad\Plan\021196-000-C-DTL-S-PLAN.dwg 11/22/2022 3:47:30 PM

wsb

SCALE: AS SHOWN
PLAN BY: BA

DESIGN BY: SML
CHECK BY: KJF

REVISIONS

NO.	DATE	DESCRIPTION

I HEREBY CERTIFY THAT THIS PLAN, SPECIFICATION, OR REPORT WAS PREPARED BY ME OR UNDER MY DIRECT SUPERVISION AND THAT I AM A DULY LICENSED PROFESSIONAL ENGINEER UNDER THE LAWS OF THE STATE OF MINNESOTA.

William C. Alms
WILLIAM ALMS
DATE: 11/22/2022 LIC. NO.: 54301

MISCELLANEOUS DETAILS

2022 POND MAINTENANCE PROJECT
CITY OF CHANHASSEN, MN

CLIENT PROJECT NO. 22-05
WSB PROJECT NO. 021196-000
SHEET 12 OF 12