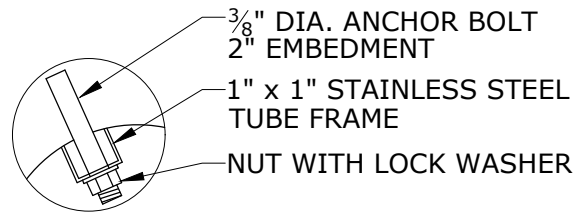
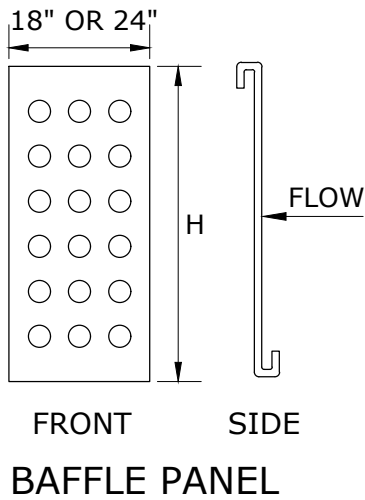
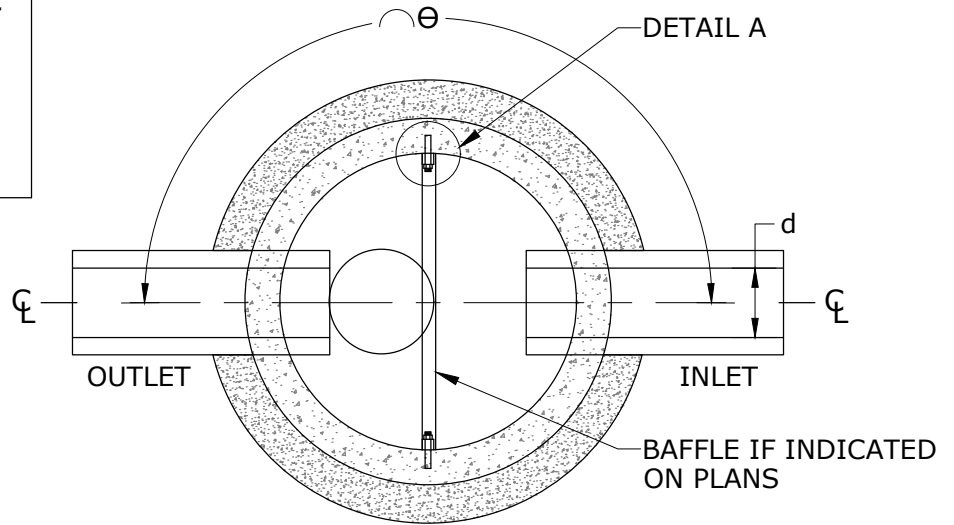


d* (IN.)	H (IN.)	Θ (DEG.)		y (IN.)	D
		MIN.	MAX.		
12	34	130	230	12	72" (TYP.)
15	34	130	230	12	
18	34	130	230	12	
21	44	140	220	12	
24	44	140	220	12	
27	44	140	220	12	
30	54	150	210	12	
36	54	150	210	12	

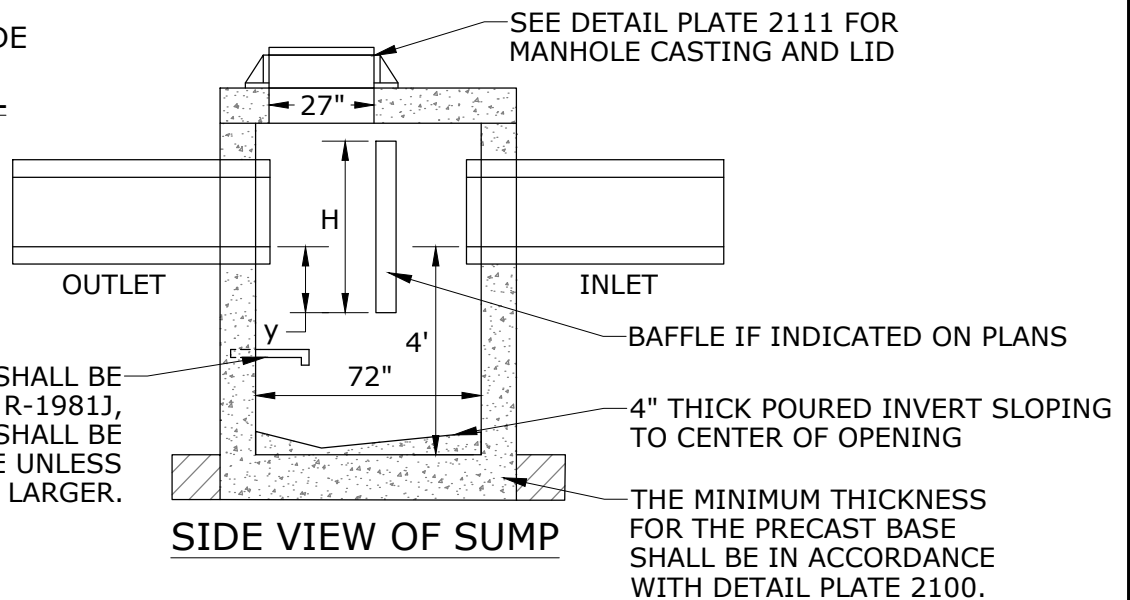
*DIAMETER OF LARGEST INLET PIPE



DETAIL A



TOP VIEW OF SUMP




SIDE VIEW OF SUMP

MANHOLE STEPS SHALL BE NEENAH R-1981J, 12" ON CENTER. STEPS SHALL BE ON DOWNSTREAM SIDE UNLESS PIPE DIAMETER IS 18" OR LARGER.

NOTES:

1. ALTERNATIVE BAFFLE MATERIAL REQUIRES SPECIFIC APPROVAL AHEAD OF BID.

 EACH STRUCTURE SHALL BE CHECKED FOR BUOYANCY AND CERTIFIED BY THE ENGINEER OF RECORD THAT FLOTATION WILL NOT OCCUR.



STANDARD SUMP MANHOLE

REVISED: 2-24

ENGINEERING DEPARTMENT

PLATE NO.:

3110