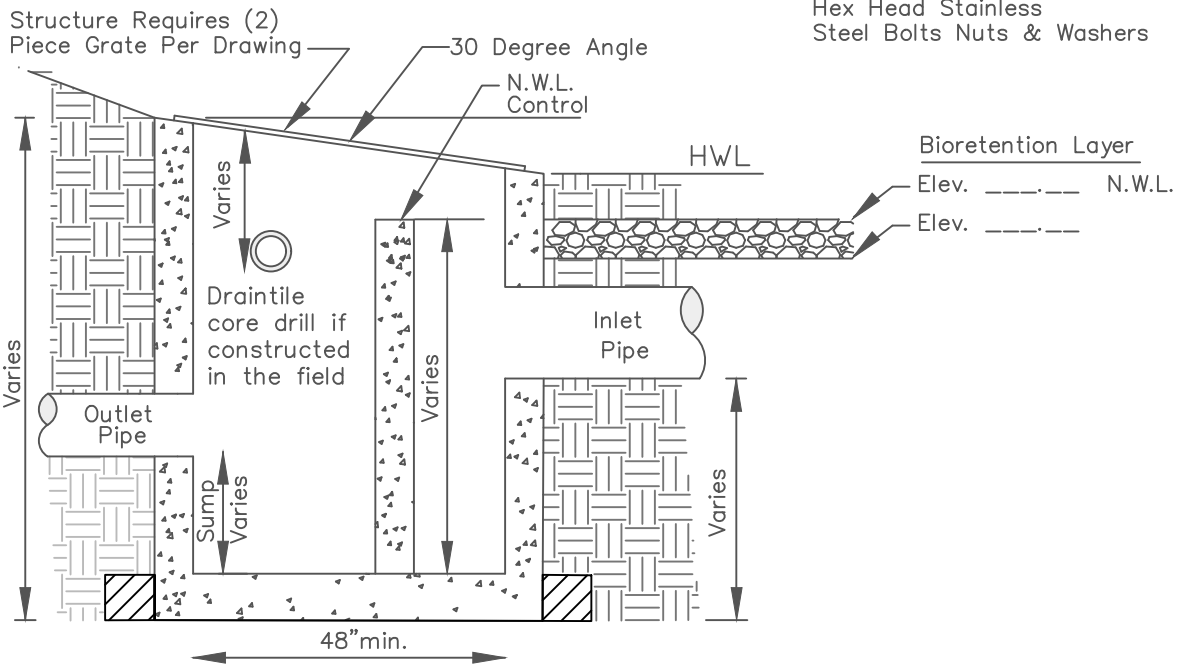



PLAN VIEW



NOTES:

1. Standard pipe bedding required on both inlet & outlet pipes.
2. Tie last three joints. Use two tie bolt fasteners per joint.
3. Offset for weir wall will be called out in special conditions for project.
4. Grates will be made in (2) halves of hot-dipped-galvanized metal.
5. Weir wall to be poured in-place.*(Using Pre-Approved Hydrophilic Water Stops) or Manufactures Precast Structure, no slide in weir walls.
6. Weir wall to be offset 6" in structure towards inlet side of structure.
7. The minimum thickness for the integral/monolithic precast base shall be in accordance with detail #2100.
8. Evaluate #5 smooth bar 4" O.C. when in pedestrian accessible areas.

 Each structure shall be checked for buoyancy and certified by the Engineer of record that flotation will not occur.



**CITY OF
CHANHASSEN**

BIORETENTION STRUCTURE
WITH WEIR & DRAINTILE

REVISED: 3-23

FILE NAME: G:\ENG\SPECS\3109A

ENGINEERING DEPARTMENT

PLATE NO.: 3109A