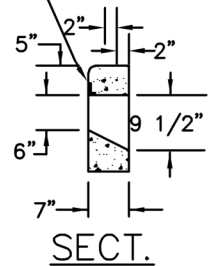
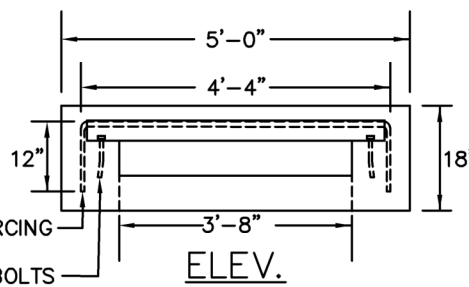
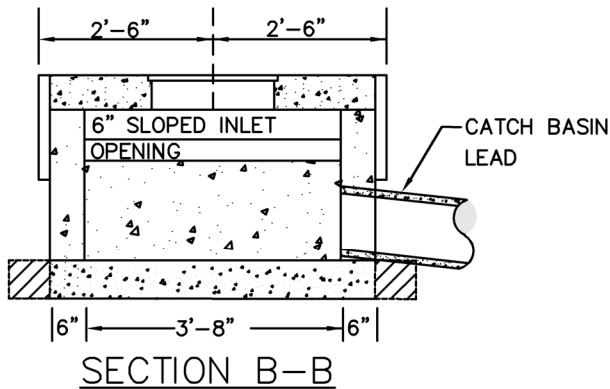


ANGLE IRON - 2"x3" x 4'-0" x 5/16"  
PLACE 3" LEG VERTICAL & PAINT WITH  
ONE COAT RED LEAD PRIMER



2-NO.5 BENT REINFORCING  
BARS 6'-4" LONG  
2-1/2"x6" BENT BOLTS



TAPER CURB TO  
11" HIGH & 7"  
WIDE AT BASIN

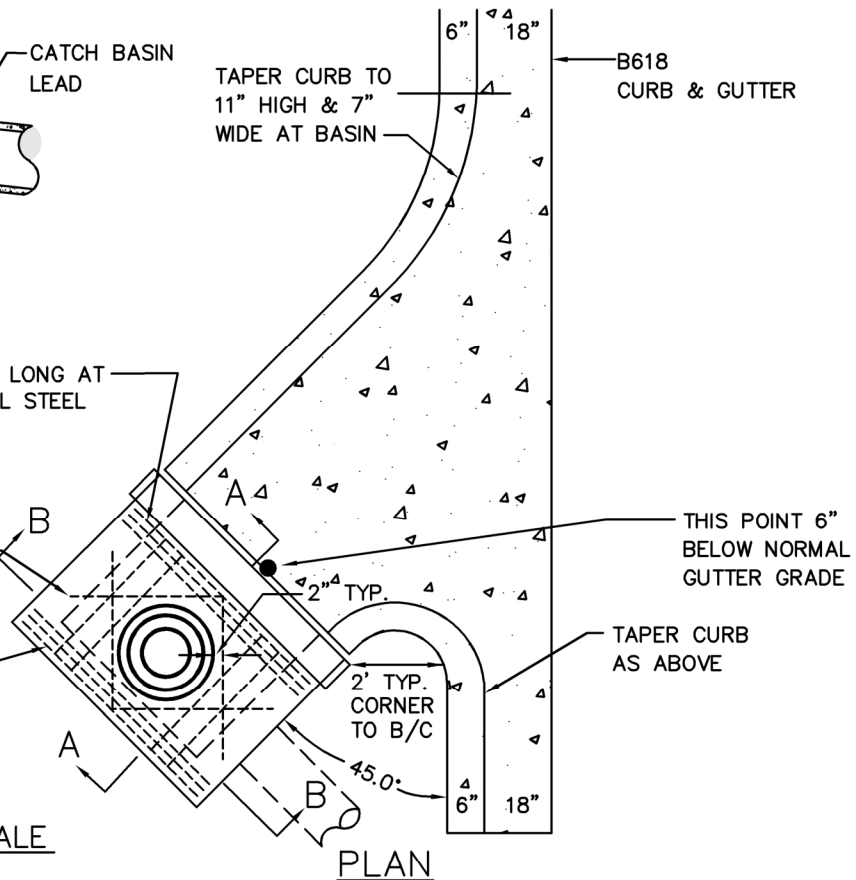
B618  
CURB & GUTTER

LONG STEEL= 6 # 4 BARS @ 4'-4" LONG AT  
2" O.C. TO BE ON TOP OF DIAGONAL STEEL

DIAGONAL STEEL= 4 # 4  
BARS x 3'-3" LONG TO  
BE ON TOP OF SHORT STEEL

SHORT STEEL= 4 # 4 BARS  
@ 3'-0" LONG TO BE 1 1/2"  
CLEAR FROM BOTTOM OF SLAB

NO SCALE



THIS POINT 6"  
BELOW NORMAL  
GUTTER GRADE

TAPER CURB  
AS ABOVE



EACH STRUCTURE SHALL BE CHECKED FOR  
BUOYANCY AND CERTIFIED BY THE ENGINEER  
OF RECORD THAT FLOTATION WILL NOT OCCUR.



**CITY OF  
CHANHASSEN**

HIGH CAPACITY  
CATCH BASIN  
B618 CURB

REVISED: 2-22

FILE NAME: G:\ENG\SPECS\3105

ENGINEERING DEPARTMENT

PLATE NO.:

3105