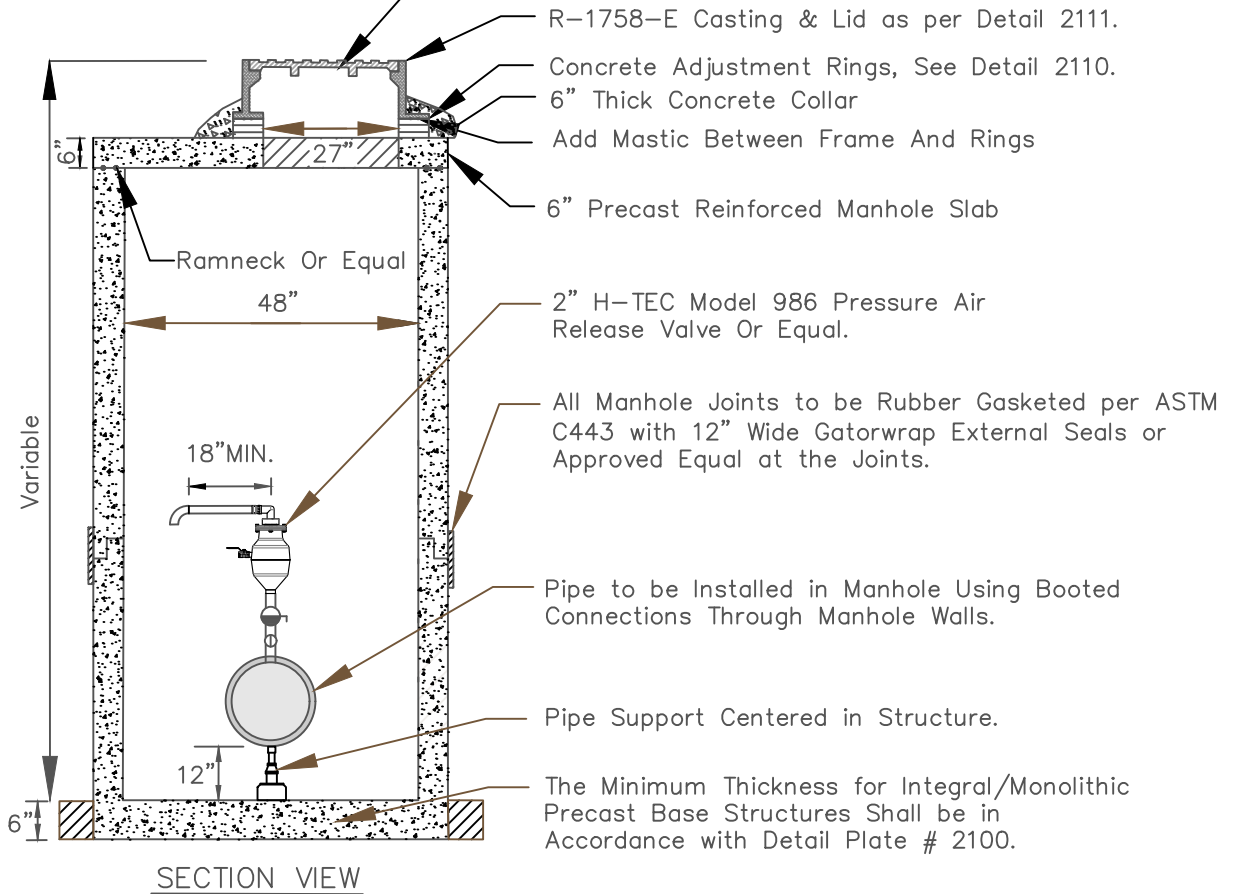


PLAN VIEW



SECTION VIEW

**NOTE:**

1. When the Manhole Structure is Constructed Outside of the Traveled Roadway a Witness Post and Sign Shall be Installed Next to the Manhole.

	Each Structure Shall be Checked for Buoyancy and Certified by the Engineer of Record That Flotation Will Not Occur.
---	---



**CITY OF  
CHANHASSEN**

FORCEMAIN AIR RELEASE  
VALVE MANHOLE

REVISED: 3-23

FILE NAME: G:\ENG\SPECS\2106

ENGINEERING DEPARTMENT

PLATE NO.:

2106